

AVAILABLE FOR LEASE

3100 E 10TH STREET, UNIT A | OAKLAND, CA

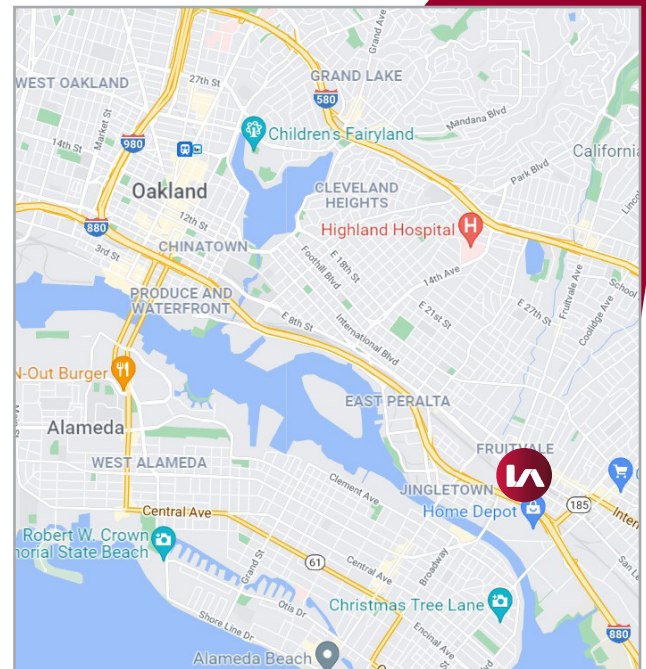


LISTING DATA:

- 7,000± SF Light Industrial
- 1,000± SF Newly Built 2-Story Office Space
- 24' Clear Height
- 1 New Oversized Roll-Up Door (20' x 16')
- 2 ADA Bathrooms
- 400 Amps @ 480 Volts
- Easy Access to I-880 & Fruitvale BART Station

ECONOMIC DATA:

- First Year Lease Rate: \$1.00/SF, I.G. (For Qualified Tenants)
- Available Now



EXCLUSIVE AGENTS:

Zack Barnes, Principal
E \\ zbarnes@lee-associates.com
P \\ 510.903.7619 | LIC# 01971978

Craig Hagglund, Principal/SIOR
E \\ chagglund@lee-associates.com
P \\ 510.903.7611 | LIC# 01090730

Dusty Mitchell, Associate
E \\ dmitchell@lee-associates.com
P \\ 510.903.7618 | LIC# 02218306

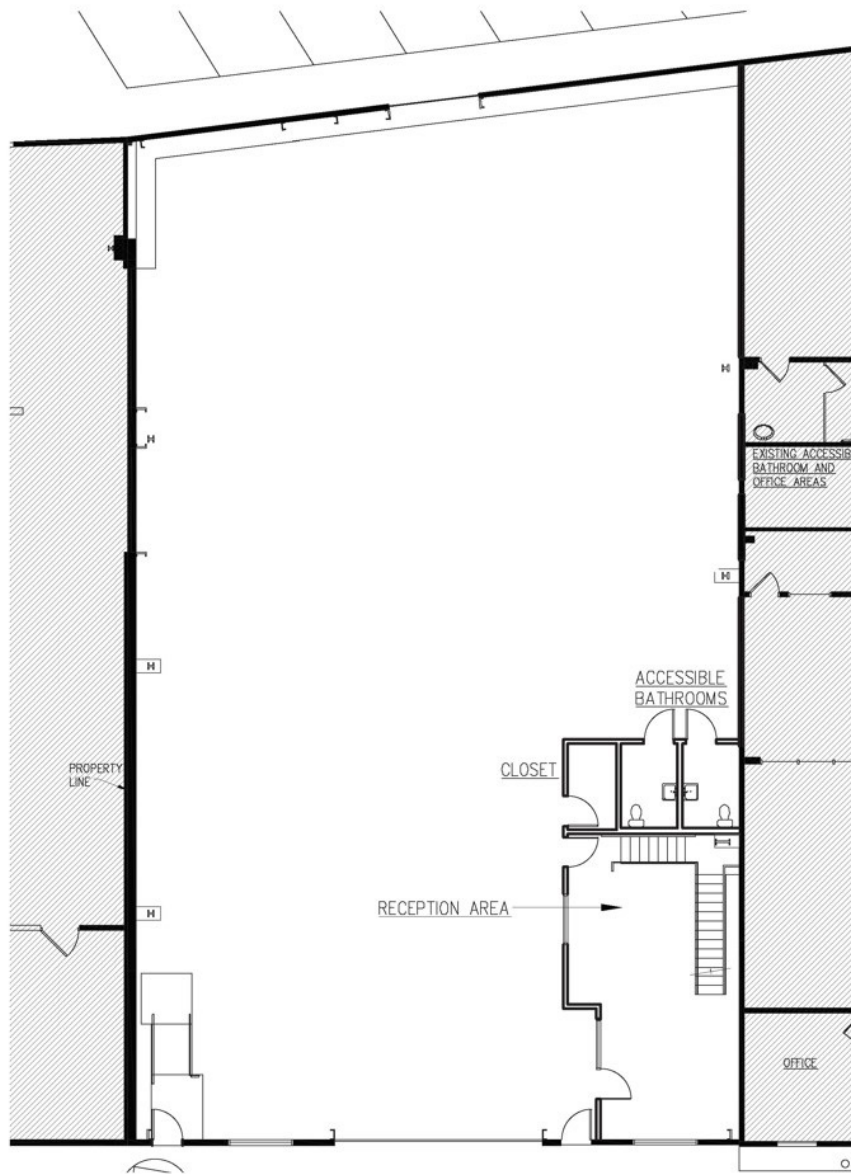
AVAILABLE FOR LEASE

3100 E 10TH STREET, UNIT A | OAKLAND, CA



COMMERCIAL REAL ESTATE SERVICES

FLOOR PLAN



EXCLUSIVE AGENTS:

Zack Barnes, Principal

E \\ zbarnes@lee-associates.com

P \\ 510.903.7619 | LIC# 01971978

Craig Hagglund, Principal/SIOR

E \\ chagglund@lee-associates.com

P \\ 510.903.7611 | LIC# 01090730

Dusty Mitchell, Associate

E \\ dmitchell@lee-associates.com

P \\ 510.903.7618 | LIC# 02218306

Lee & Associates Oakland Commercial Real Estate \ 555 12th Street, Suite 1725, Oakland, CA 94607 \ www.lee-associates.com

All information furnished regarding property for sale, rental or financing is from sources deemed reliable, but no warranty or representation is made to the accuracy thereof and same is submitted to errors, omissions, change of price, rental or other conditions prior to sale, lease or financing or withdrawal without notice. No liability of any kind is to be imposed on the broker herein.