

# 9050 AUTOBAHN

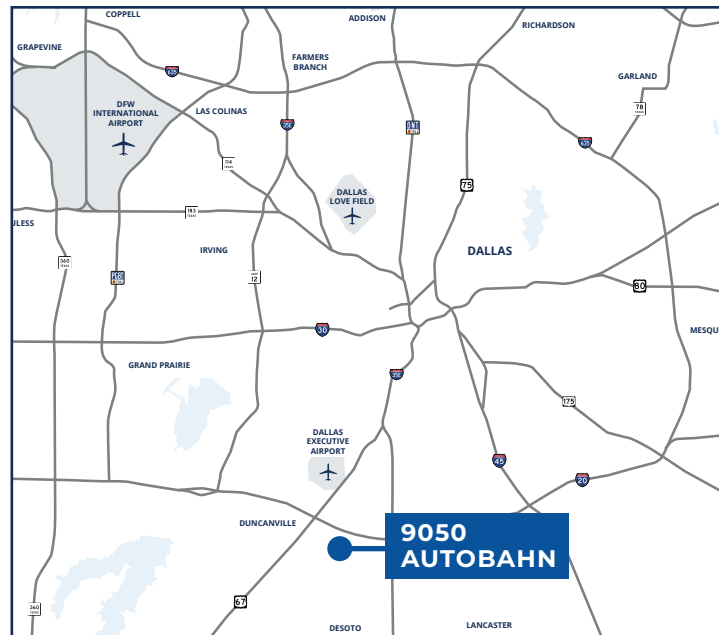
9050 AUTOBAHN | DALLAS, TEXAS 75237



## 9050 AUTOBAHN DALLAS, TEXAS 75237

### BUILDING INFORMATION

- 8,791 - 27,991 SF available
- 21' clear height
- Fully sprinklered
- Immediate access to I-20, I-35E and Hwy-67
- Available now!



Canon Shoults, SIOR, CCIM | 972.280.8328 | [cshoults@holtlunsford.com](mailto:cshoults@holtlunsford.com)  
John Gorman | 972.280.8329 | [jgorman@holtlunsford.com](mailto:jgorman@holtlunsford.com)  
Luke Floyd | 972.585.5109 | [lfloyd@holtlunsford.com](mailto:lfloyd@holtlunsford.com)

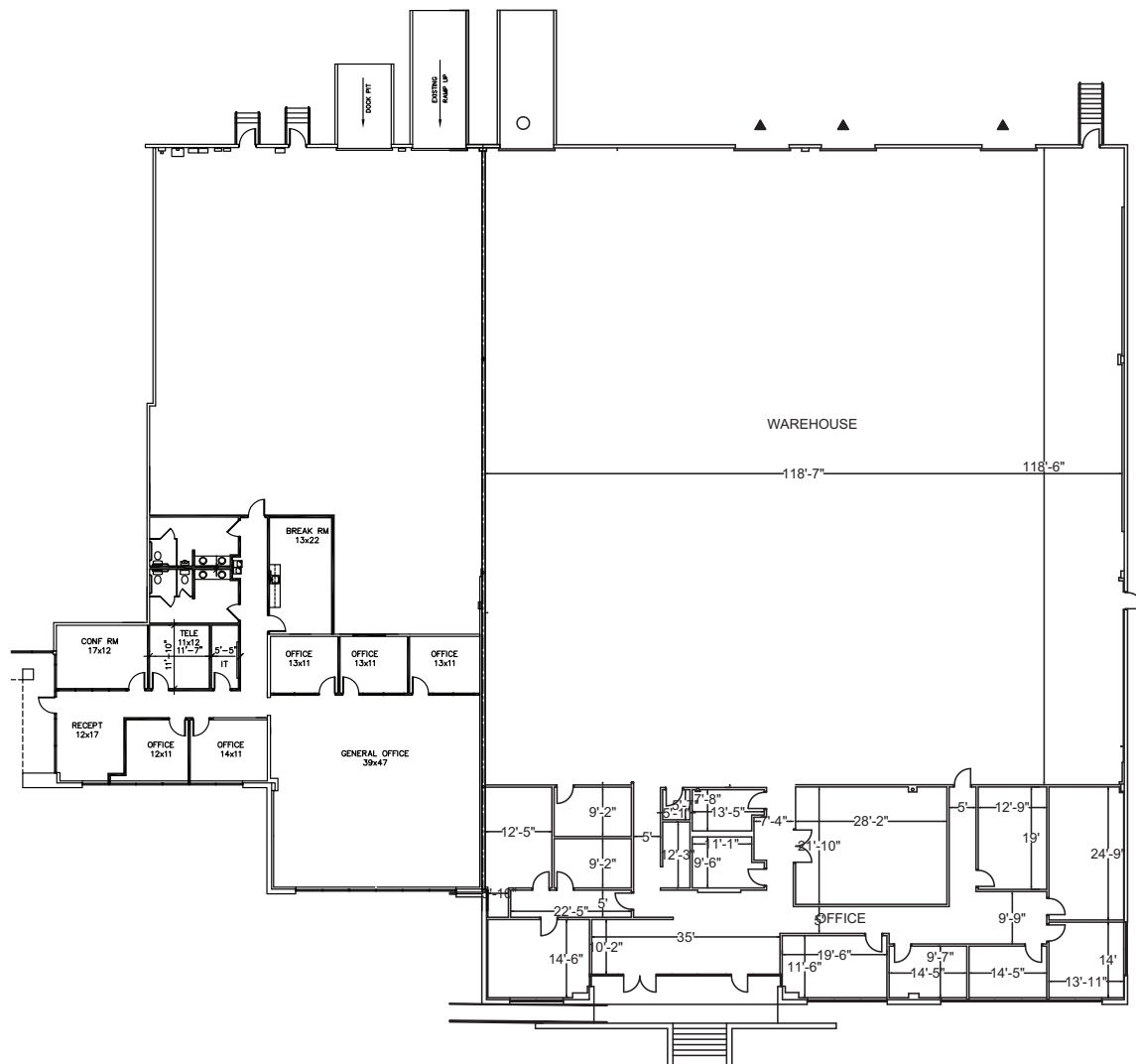
This information is deemed reliable, however Holt Lunsford Commercial makes no guarantees, warranties or representation as to the completeness or accuracy thereof.

# 9050 AUTOBAHN

9050 AUTOBAHN | DALLAS, TEXAS 75237

## Floorplan: Suites 400 & 500

- 27,991 SF available
- 6,692 SF office
- 1,818 SF air-conditioned workroom
- 19,481 SF warehouse
- Three (3) dock high loading doors
- Three (3) dock doors with ramp

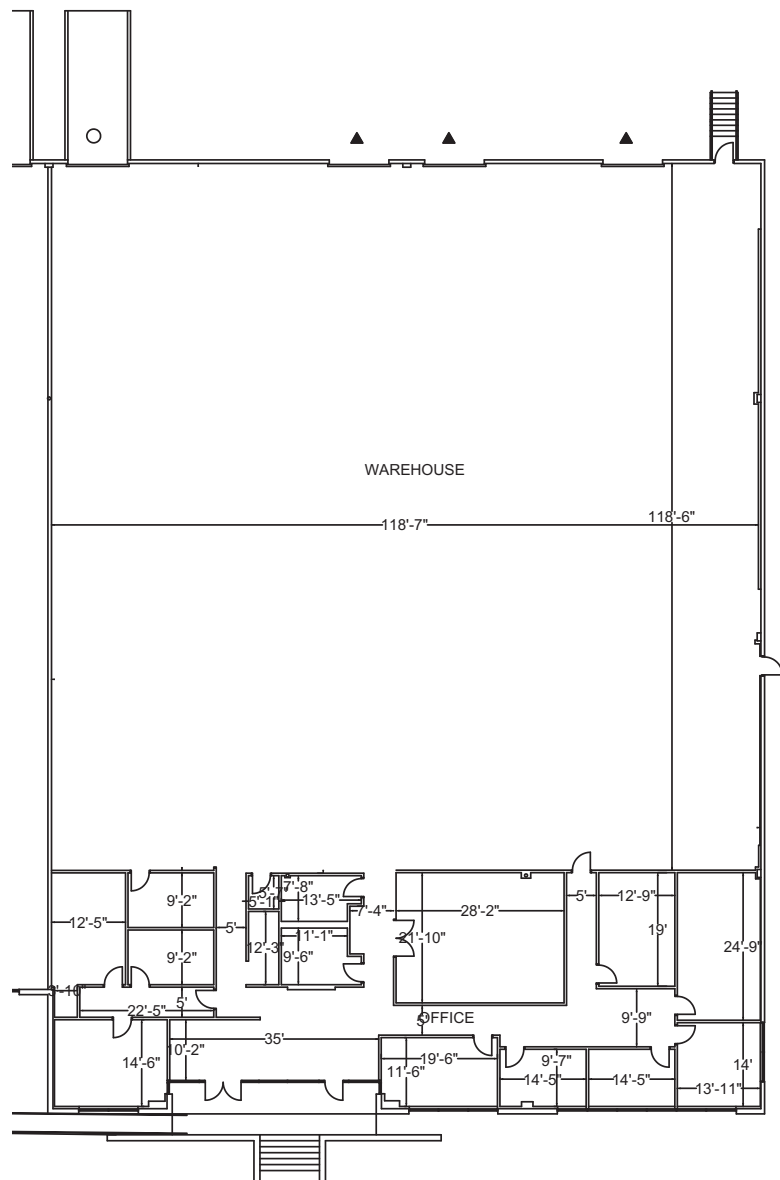


# 9050 AUTOBAHN

9050 AUTOBAHN | DALLAS, TEXAS 75237

## Floorplan: Suite 500

- 19,200 SF available
- 5,276 SF office
- 13,924 SF warehouse
- Three (3) dock high loading doors
- One (1) dock door with ramp

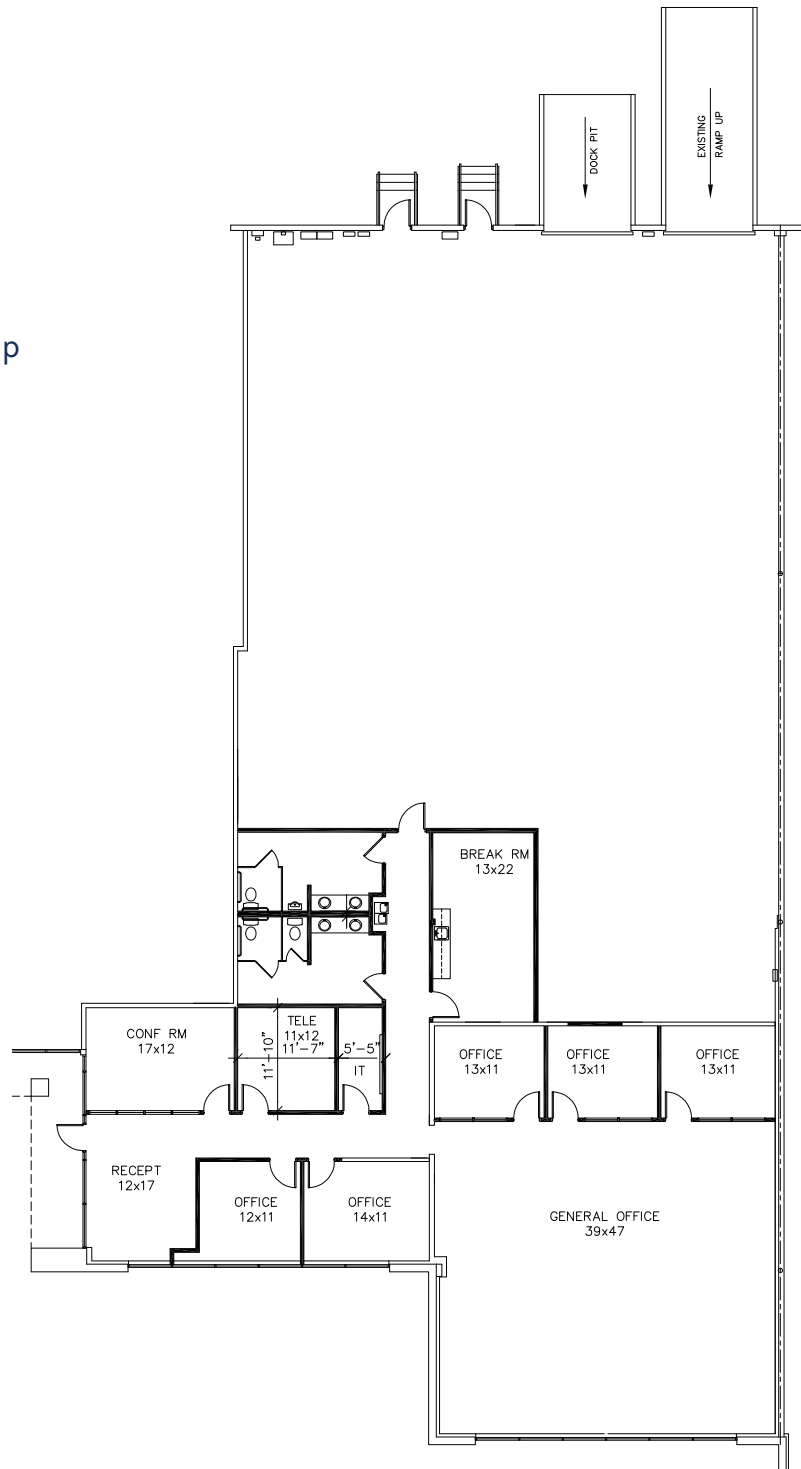


# 9050 AUTOBAHN

9050 AUTOBAHN | DALLAS, TEXAS 75237

## Floorplan: Suite 400

- 8,791 SF available
- 1,416 SF office
- 1,818 SF air-conditioned workroom
- 5,557 SF warehouse
- Two (2) dock doors with ramp



# 9050 AUTOBAHN

9050 AUTOBAHN | DALLAS, TEXAS 75237

## MADE READY!



Canon Shoults, SIOR, CCIM | 972.280.8328 | [cshoults@holtlunsford.com](mailto:cshoults@holtlunsford.com)  
John Gorman | 972.280.8329 | [jgorman@holtlunsford.com](mailto:jgorman@holtlunsford.com)  
Luke Floyd | 972.585.5109 | [lfloyd@holtlunsford.com](mailto:lfloyd@holtlunsford.com)

This information is deemed reliable, however Holt Lunsford Commercial makes no guarantees, warranties or representation as to the completeness or accuracy thereof.



