



KellyandCall.com

2340 E. GRANITE DELLS ROAD, PRESCOTT | ARIZONA

Undeveloped 24.31 Acres Parcel in Beautiful Prescott Location



Located at the intersection of State Route 89 and E. Granite Dells Road



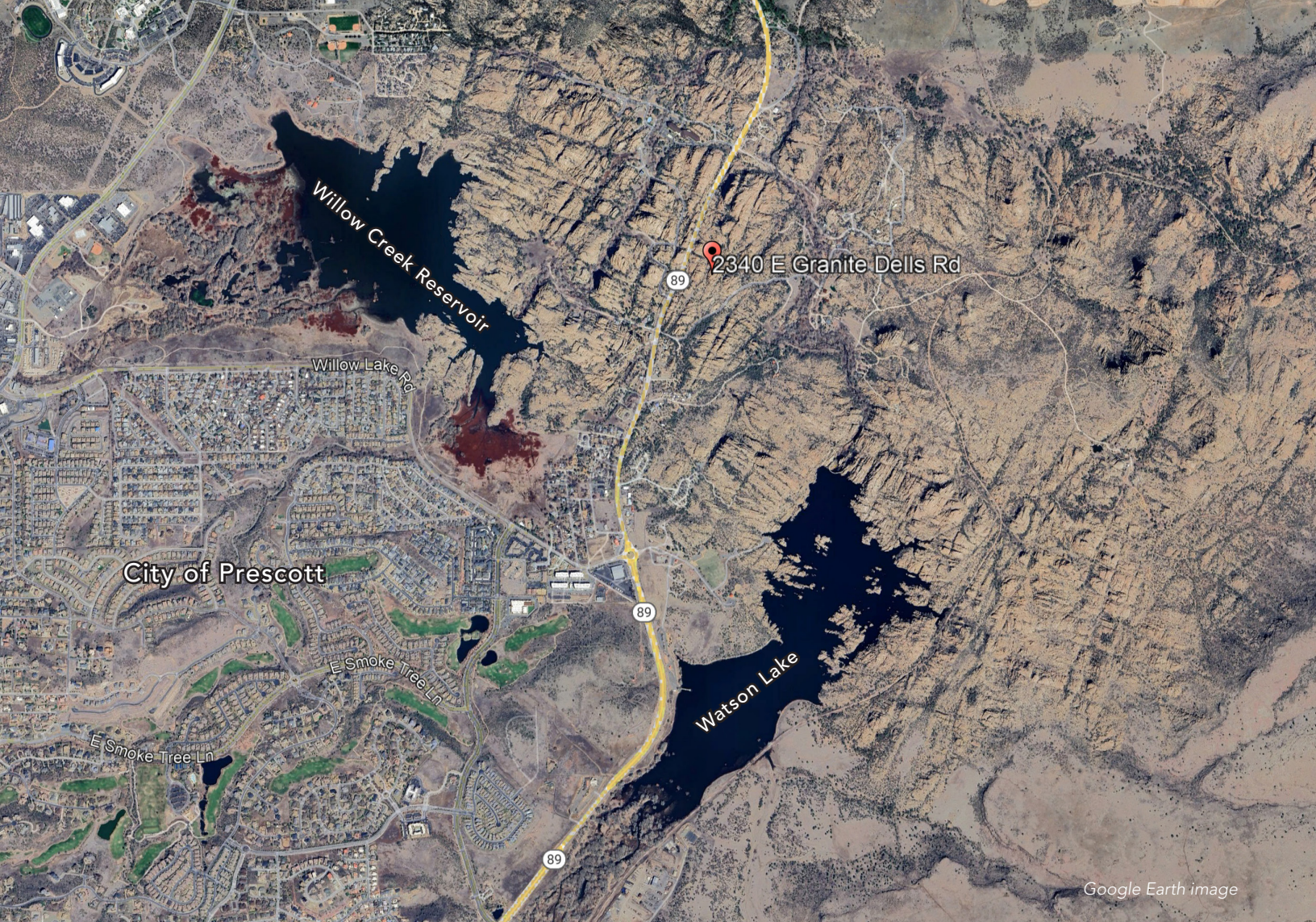
Kelly & Call Commercial
1600 W. University Ave.
Suite 218
Flagstaff, AZ 86001
Phone: 928 440 5450

For Sale:
\$3,000,000

Contact:

ROB GERLAK
Principal
928 440 5450
Rob@KellyandCall.com

KEVIN B. CALL, CPA
Designated Broker
Principal
928 440 5450
Kevin@KellyandCall.com



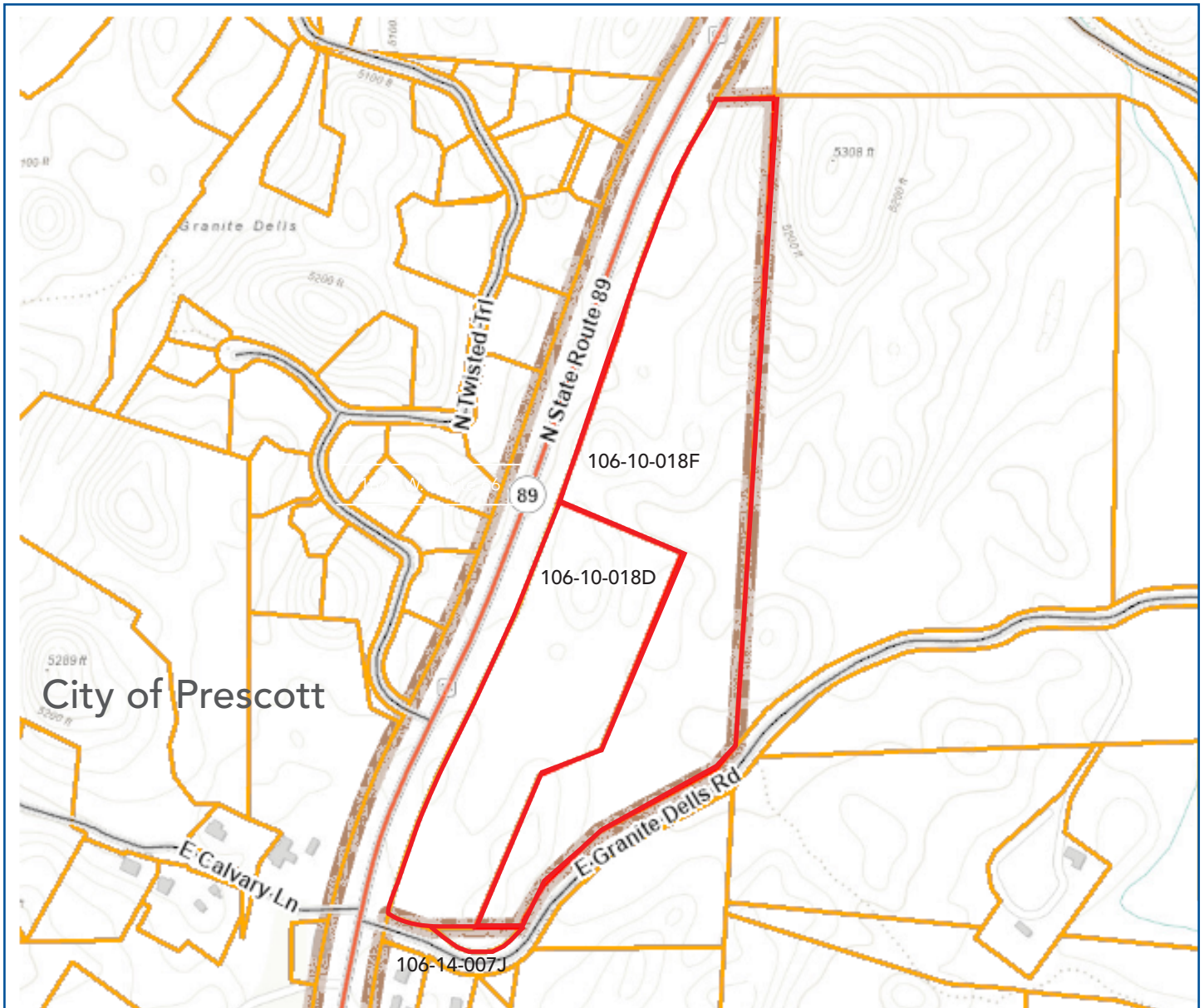
Google Earth image

Granite Dells, Prescott | AZ

This 24.31-acre parcel is located on one of Prescott's primary corridors, positioned between State Route 89 and E. Granite Dells Rd. This location is renowned for the exposed bedrock and large granite boulders as well as the adjacent Watson and Willow Lakes. The parcels are zoned to allow for many potential residential as well as business uses. The 24.91 acre parcel had previous site designs for a 36 lot custom home subdivision (lot layout available on request). This lot stands as one of the few remaining opportunities in this highly sought after residential area. It features excellent visibility to State Route 89 and unbeatable geological features.



View of Watson Lake located adjacent to Granite Dells



2340 E. Granite Dells Rd., Prescott, Arizona consists of 3 parcels totaling 24.31 acres. Business General allows for many potential residential as well as business uses.

Parcel and Zoning	Acres
106-10-018F Business General/Recreational	16.20
106-10-018D Business General	7.53
106-14-007J Recreational Space	.58



Architectural rendering of possible home in Granite Dells