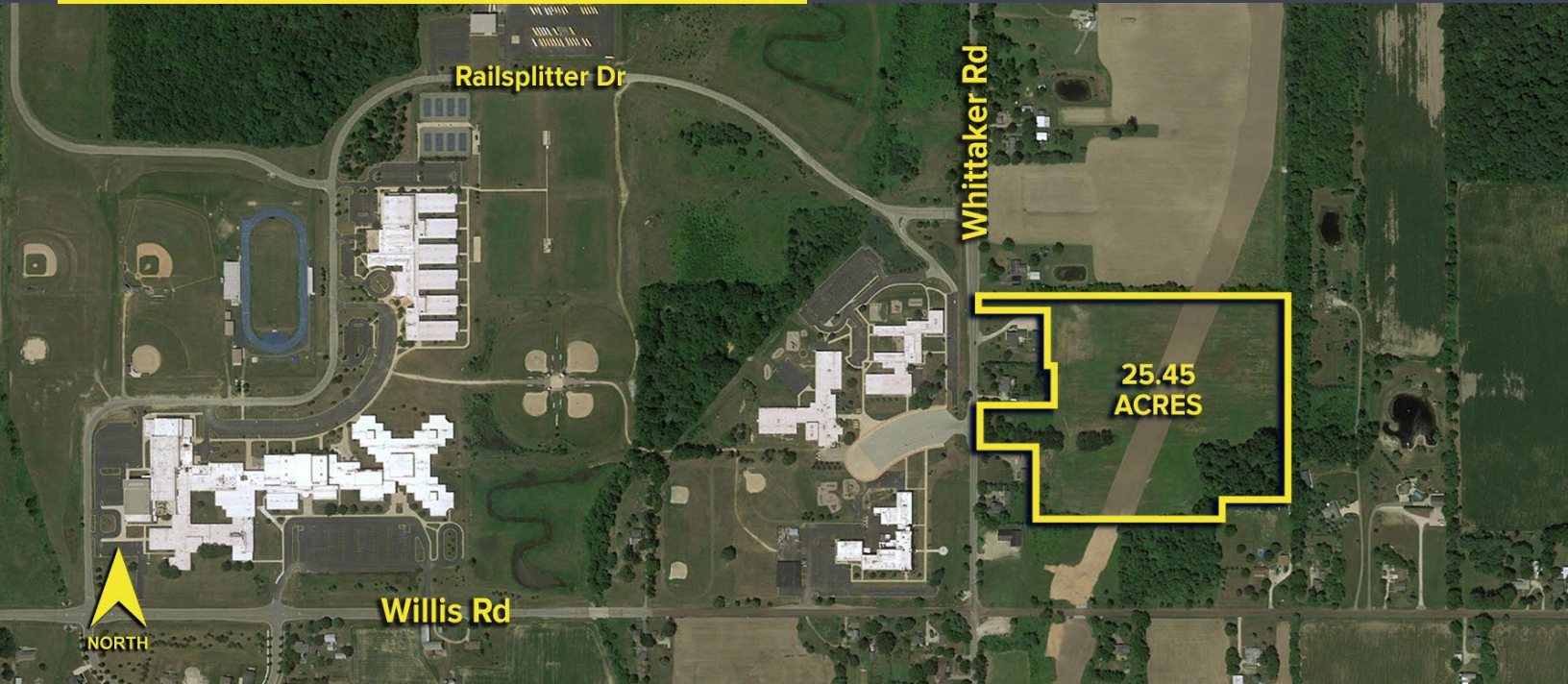


# WHITTAKER ROAD AUGUSTA TWP., MICHIGAN



**SIGNATURE  
ASSOCIATES**  
KNOW SIGNATURE | KNOW RESULTS

**VACANT LAND FOR SALE**  
**25.45 Acres Available**



## PROPERTY FEATURES

- 25.45 acres available
- Zoned GC, General Commercial
- Proposed site plan includes shopping center, grocery store or outlot
- Allows for up to 625 parking spaces (ratio 5.04/1,000 sq. ft.)
- Asking Price: \$1,800,000 (\$70,726.92/acre)



For more information, please contact:

**STEVE GORDON**  
(248) 948 0101  
sgordon@signatureassociates.com

**DRAKE FILIPPIS**  
(248) 799 3161  
dfilippis@signatureassociates.com

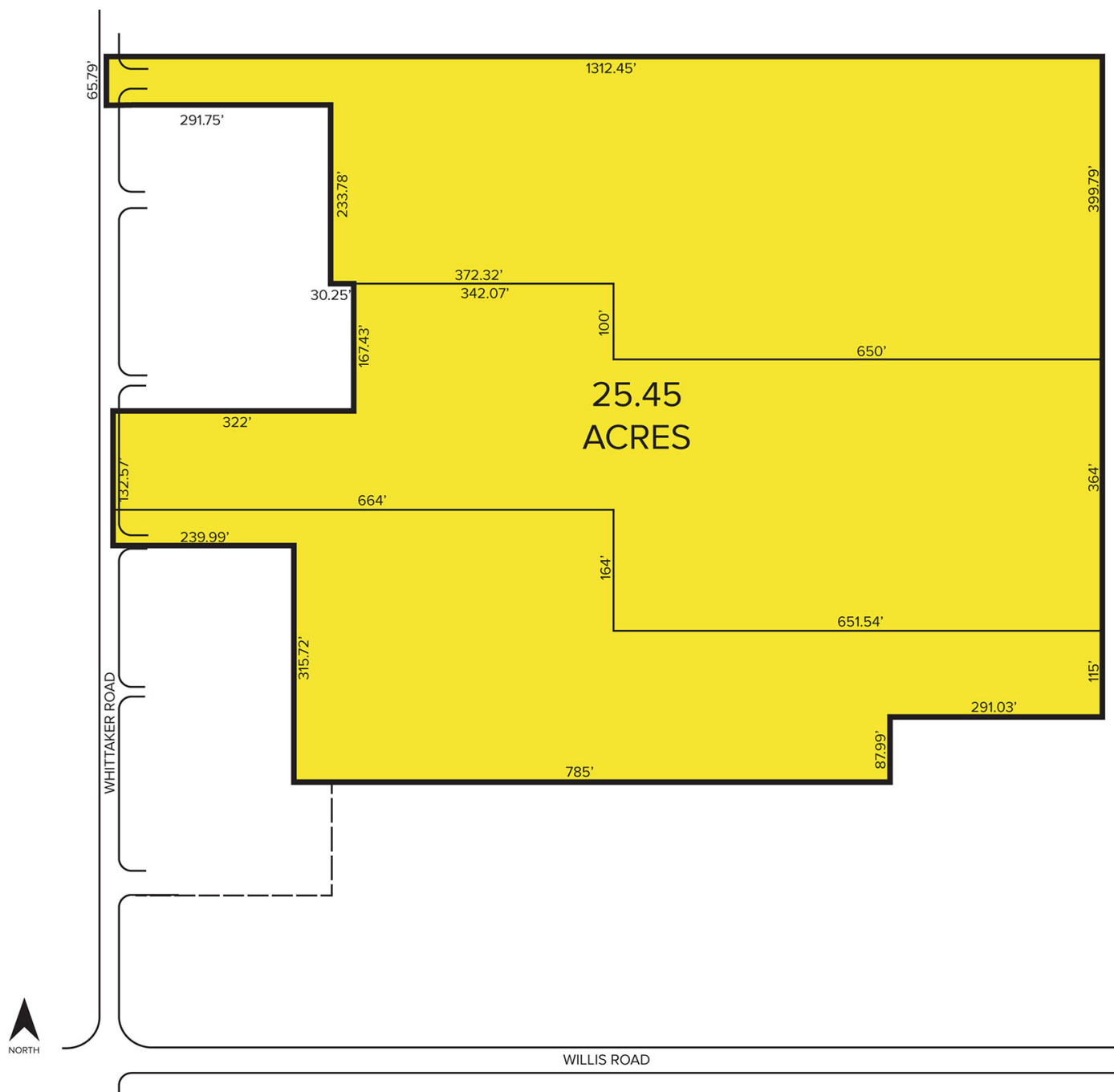
**SIGNATURE ASSOCIATES**  
One Towne Square, Suite 1200  
Southfield, MI 48076  
www.signatureassociates.com

# Whittaker Road – Augusta Twp., Michigan

## Vacant Land For Sale

25.45  
Acres  
AVAILABLE

### Site Plan



For more information, please contact:

**STEVE GORDON**

(248) 948 0101

[sgordon@signatureassociates.com](mailto:sgordon@signatureassociates.com)

**DRAKE FILIPPIS**

(248) 799 3161

[dfilippis@signatureassociates.com](mailto:dfilippis@signatureassociates.com)

**SIGNATURE ASSOCIATES**

One Towne Square, Suite 1200

Southfield, MI 48076

[www.signatureassociates.com](http://www.signatureassociates.com)