

5321 S. PENNSYLVANIA AVE.  
LANSING, MICHIGAN

INDUSTRIAL FOR SALE  
4,471 Square Feet Available



**SIGNATURE  
ASSOCIATES**  
KNOW SIGNATURE | KNOW RESULTS

**WAREHOUSE/OFFICE**



## PROPERTY FEATURES

- 4,471 total building square feet
- 3,300 square feet of open warehouse
- 1,171 square foot office
- Corner location with 0.75 acres
- Three (3) overhead doors
- 12' ceiling height
- Security system in place
- Parking for up to 25 vehicles
- Sprinklers
- Zoned F Commercial
- Built in 1976
- Sale Price: \$510,400 (\$114.16/sf)



For more information, please contact:

**JOE RIZQALLAH**  
(616) 822 6310  
jrizqallah@signatureassociates.com

**DAVID MILLER**  
(248) 613 5192  
dmiller@signatureassociates.com

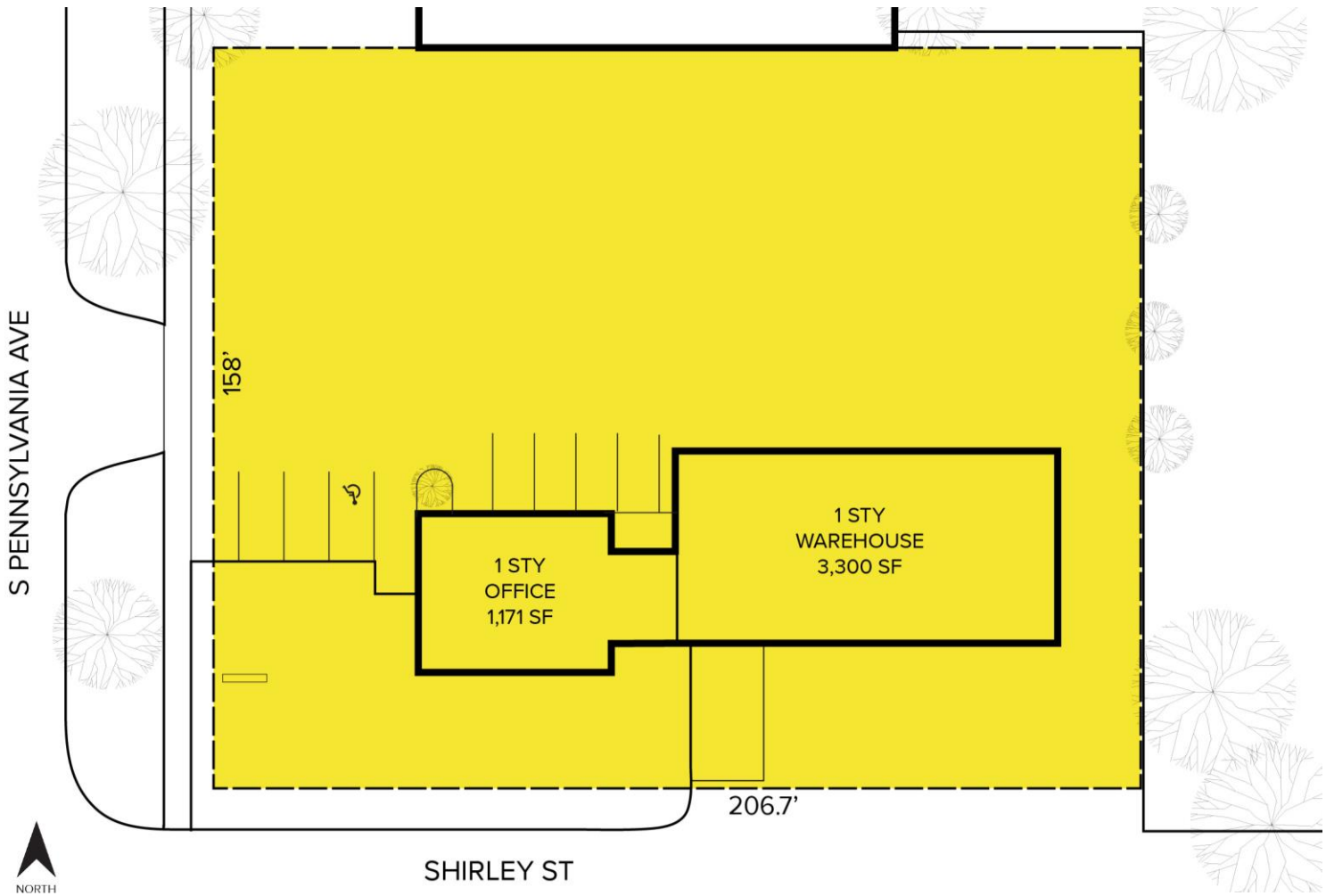
**SIGNATURE ASSOCIATES**  
1188 East Paris Ave SE, Suite 220  
Grand Rapids, MI 49546  
www.signatureassociateswm.com

# 5321 S. Pennsylvania Avenue – Lansing, Michigan

## Industrial For Sale

4,471  
Square Feet  
AVAILABLE

### Site Plan



For more information, please contact:

**JOE RIZQALLAH**

(616) 822 6310

[jrizqallah@signatureassociates.com](mailto:jrizqallah@signatureassociates.com)

**DAVID MILLER**

(248) 613 5192

[dmiller@signatureassociates.com](mailto:dmiller@signatureassociates.com)

**SIGNATURE ASSOCIATES**

1188 East Paris Ave SE, Suite 220

Grand Rapids, MI 49546

[www.signatureassociateswm.com](http://www.signatureassociateswm.com)

# 5321 S. Pennsylvania Avenue – Lansing, Michigan

Industrial For Sale

4,471  
Square Feet  
AVAILABLE

Aerial



For more information, please contact:

**JOE RIZQALLAH**  
(616) 822 6310  
jrizzqallah@signatureassociates.com

**DAVID MILLER**  
(248) 613 5192  
dmiller@signatureassociates.com

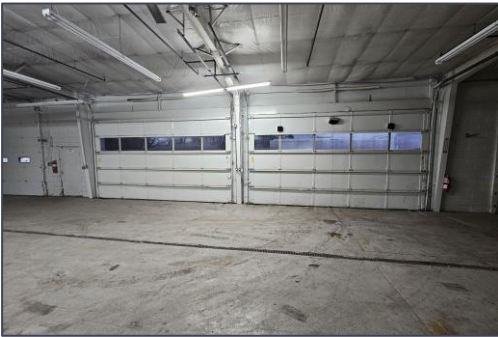
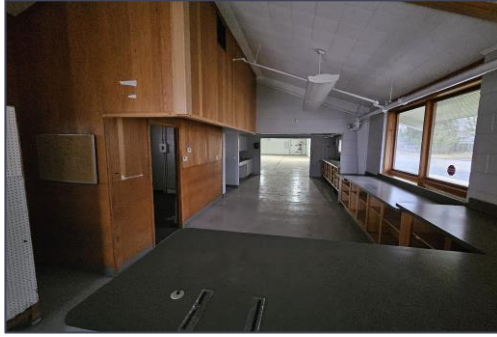
**SIGNATURE ASSOCIATES**  
1188 East Paris Ave SE, Suite 220  
Grand Rapids, MI 49546  
www.signatureassociateswm.com

# 5321 S. Pennsylvania Avenue – Lansing, Michigan

## Industrial For Sale

4,471  
Square Feet  
AVAILABLE

### Interior Photos



For more information, please contact:

**JOE RIZQALLAH**

(616) 822 6310

[jrizqallah@signatureassociates.com](mailto:jrizqallah@signatureassociates.com)

**DAVID MILLER**

(248) 613 5192

[dmiller@signatureassociates.com](mailto:dmiller@signatureassociates.com)

**SIGNATURE ASSOCIATES**

1188 East Paris Ave SE, Suite 220

Grand Rapids, MI 49546

[www.signatureassociateswm.com](http://www.signatureassociateswm.com)