

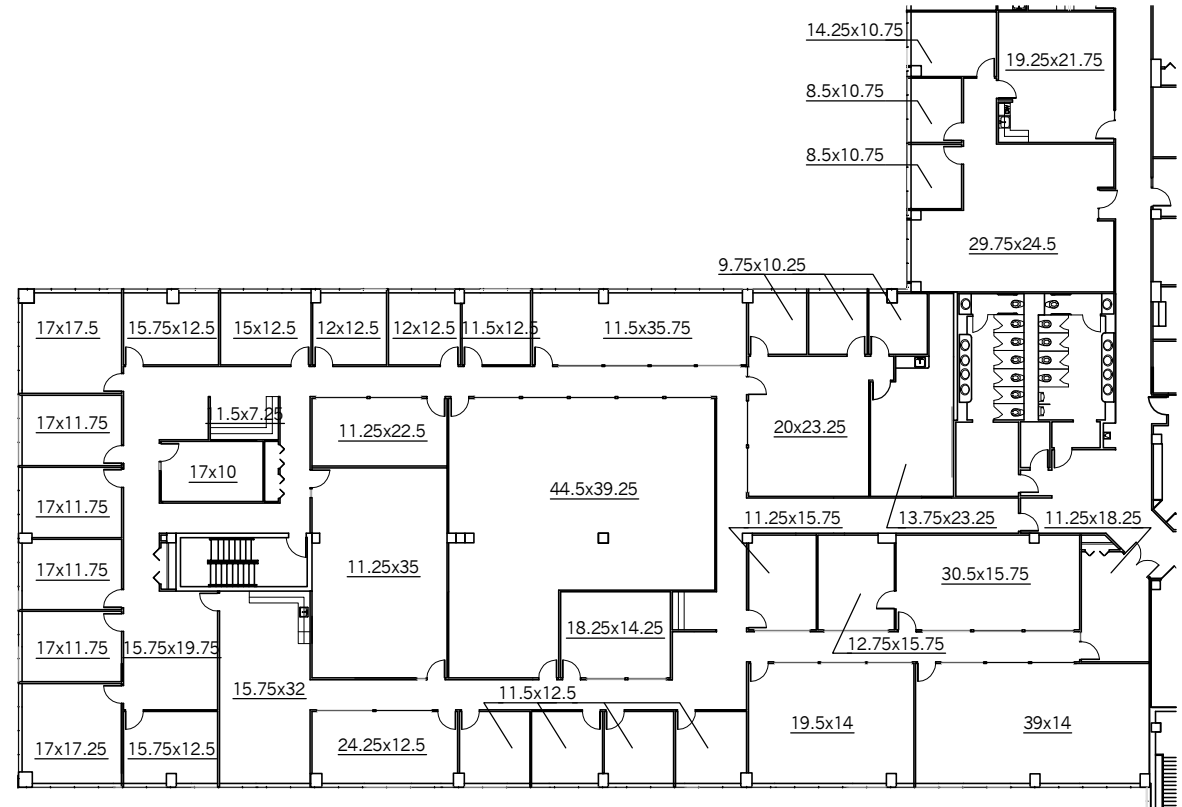
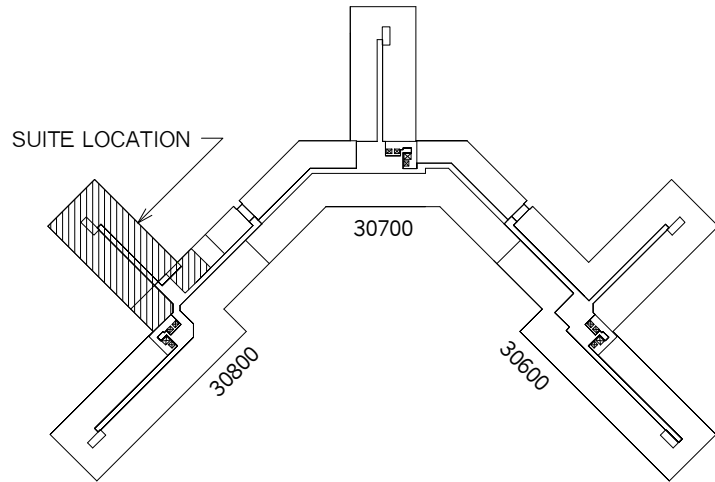


# BINGHAM OFFICE CENTER

30600 TELEGRAPH RD. - SUITE 1386  
BINGHAM FARMS, MI 48025

CONTACT:  
**SHEILA FOGARTY (248) 594-1155**

- \* Newly renovated complex
- \* 24 hour security system
- \* After hours security guard on site
- \* Cafe and Sundry shop and bank / ATM
- \* Professional on site management and maintenance
- \* Efficient energy management system
- \* Ample parking
- \* Easy access to all major thorough fares



NORTH

## SUITE 2800

17,301 R.S.F.

SCALE: 1/32"=1'-0"

NOTE: ALL ROOM SIZES ARE APPROXIMATE



NORTH

## 2nd FLOOR KEY PLAN

NO SCALE

**NAI** Farbman

Commercial Real Estate Services, Worldwide.