

4714 N. Armenia Ave.

TAMPA, FLORIDA



PRIME OFFICE CONDO - FOR LEASE

Perfect for professional or medical uses, this office condo offers a welcoming reception area, ample office space, and a large conference room. Located near St. Joseph's and AdventHealth hospitals, it provides high visibility and ample parking. Ideal for businesses seeking a prime location in a vibrant, professional environment.

- 5 Offices + Conference
- Prime Location
- Reception Area
- High Traffic
- Ample Parking

TOTAL SIZE: 2,234 SF

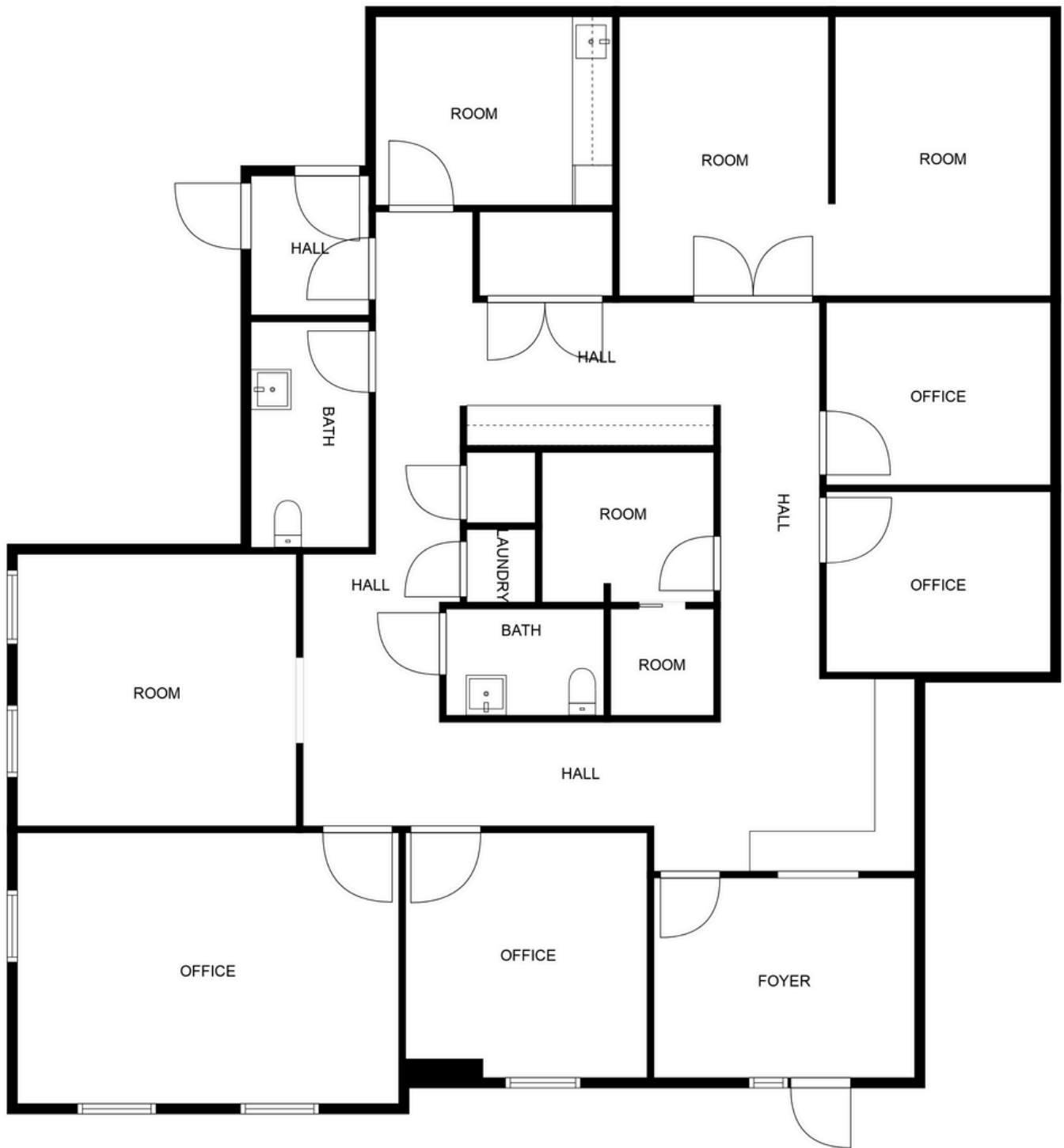
**THE
OUTLIER
GROUP**

MAC AUTREY

(888) 966-4820

SOLUTIONS@OUTLIERGROUP.US

OUTLIERGROUP.US



FLOOR PLAN CREATED BY CUBICASA APP. MEASUREMENTS DEEMED HIGHLY RELIABLE BUT NOT GUARANTEED.