

E. Fayette and S. Crouse Commercial Spaces for Lease

*Up to 4 storefronts steps from
Syracuse University and
Hospitals. 726 SF – 3,339 SF*

Space Amenities

- First floor retail / office available
 - Newly Rehabbed spaces
 - Separately metered Utilities
 - Original Tin Ceilings and hardwood floors
 - Well Maintained building under new management
 - Kitty corner to 650 beds
 - Walking distance to 22,000 beds and 800 hotel beds.
- Convenient location**
- Outstanding location close to SU, Hospitals and Downtown
 - Faces SU and the hospitals
 - Located on the Syracuse University and Upstate Hospital shuttle route
 - On centro bus line
 - Close to Erie Blvd. and Highways



For More Information contact owner of Property:

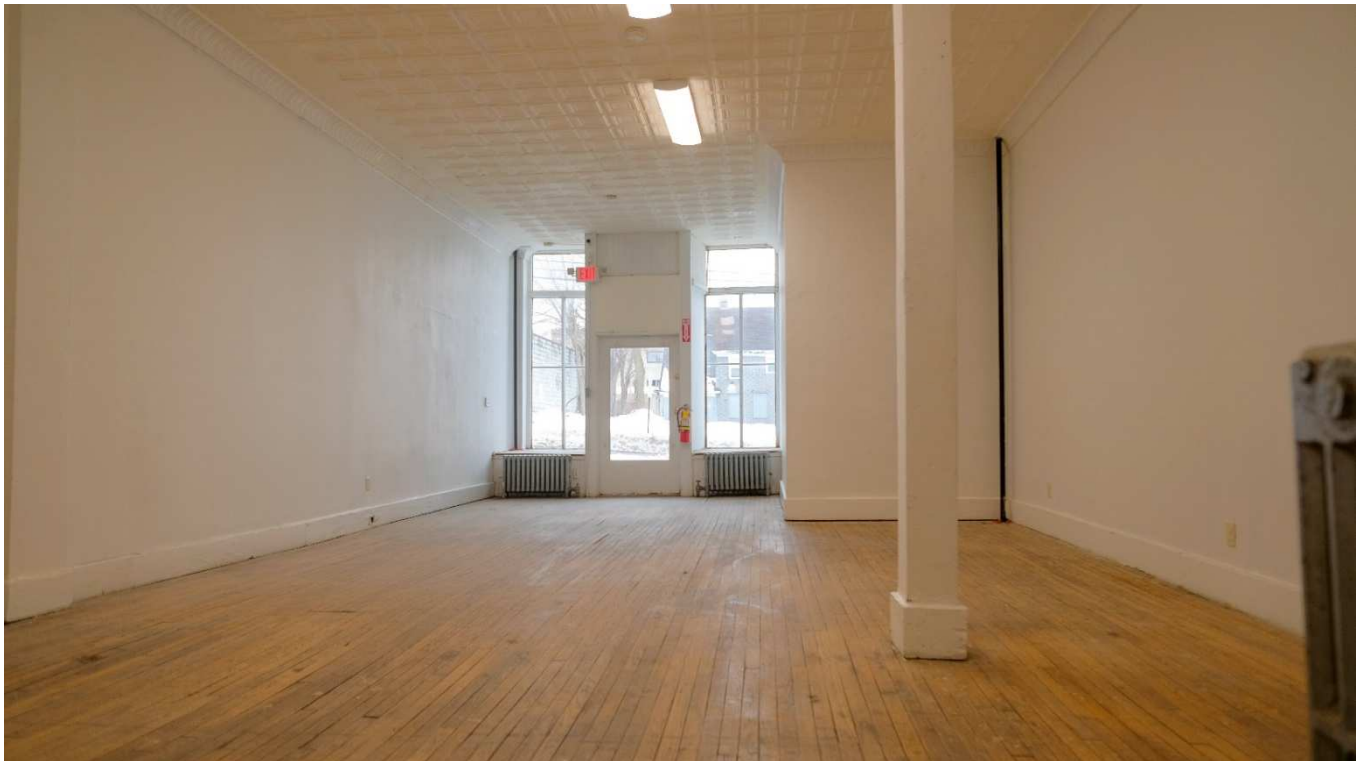
T. Andrew Devorsetz, Member
1001 Fayette LLC
C (315) 415-8613
Adevorsetz@upstatecos.com

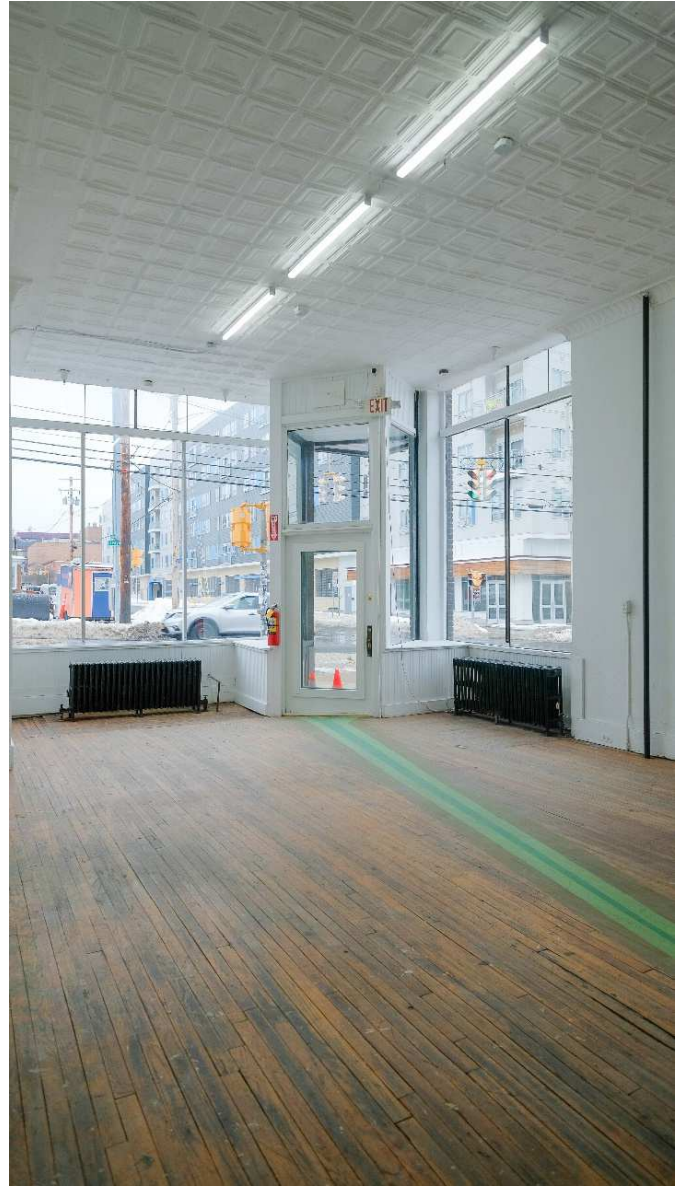
The information above has been obtained from sources believed reliable. While we do not doubt its accuracy, we have not verified it and make no guarantee, warranty, or representation about it. It is your responsibility to independently confirm its accuracy and completeness.





Original Tin Ceilings and hardwood floors.



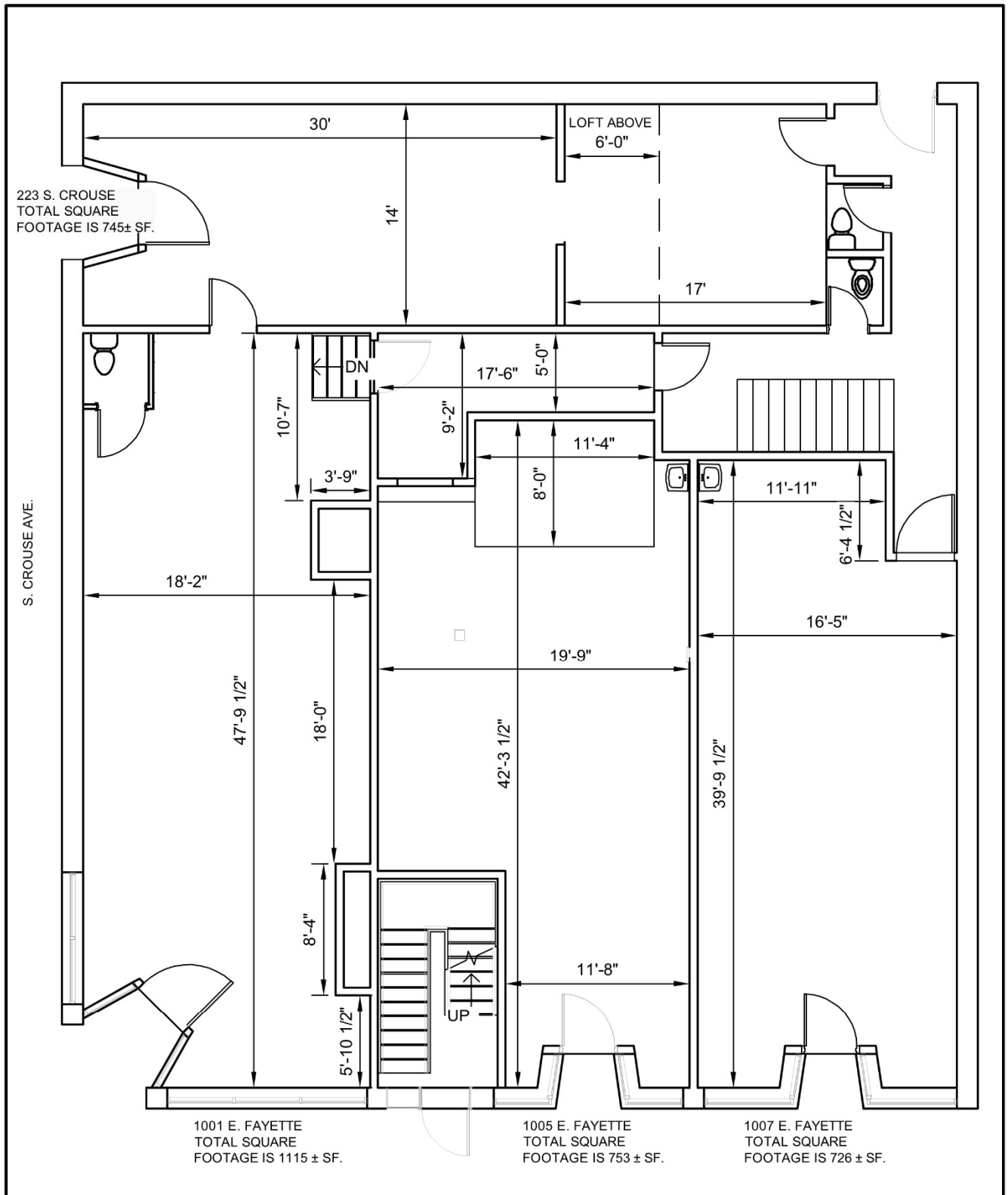


Large, sunny, storefront windows.



Open floor plan.





1001, 1005, 1007 E. FAYETTE STREET
AND 223 S. CROUSE AVE.

Demographics

Demographics	3 miles	5 miles	10 miles
Population	147,323	229,799	385,786
Households	58,137	92,854	155,611
Avg Household Income	\$51,430	\$61,625	\$75,021
Daytime Population	196,371	299,757	436,582

Major Employers in University Hill Area:

Upstate University Hospital & Golisano 9,525
Total Syracuse University Faculty and Staff 5281
Crouse Hospital 3,100
Syracuse VA Hospital 1,400