



FOR SALE

PINPOINT

NORTHTOWN RAW LAND

STORAGE MAX DRIVE, JACKSON, MS 39211

For More Information

BB MITCHELL

601.586.3220

bb@pinpointcres.com

SAM COX, SIOR

601.586.3220

sam@pinpointcres.com

190 EAST CAPITOL STREET | JACKSON, MS 39201 | 601.586.3220 | PINPOINTCRES.COM

FOR SALE

PINPOINT

NORTHTOWN RAW LAND

STORAGE MAX DRIVE, JACKSON, MS 39211



OFFERING SUMMARY

Sale Price:	\$103,890
Lot Size:	0.53 Acres
Zoning:	C-3

PROPERTY OVERVIEW

Pinpoint Commercial Real Estate is proud to present raw land available for sale near Northtown Drive in Jackson, Mississippi. This C-3 zoned lot is ideally located on Storage Max Drive right off of Old Canton Drive in Northeast Jackson. For more information, please contact Pinpoint Commercial Real Estate at 601.586.3220

PROPERTY HIGHLIGHTS

- .53 Acres
- Zoning: C-3
- Northeast Jackson
- 2 Miles from I-55

BB MITCHELL

601.586.3220
bb@pinpointcres.com

SAM COX, SIOR

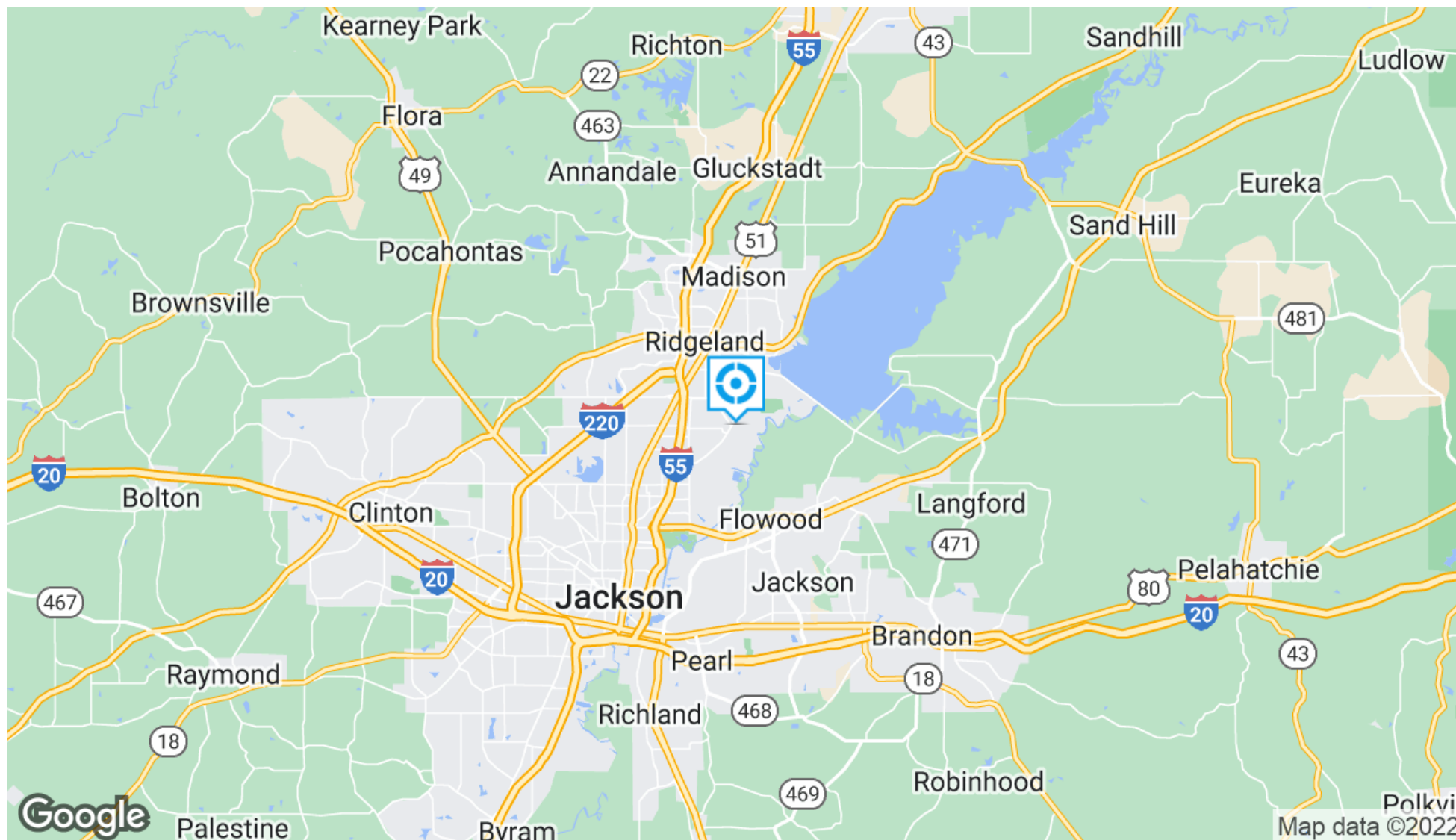
601.586.3220
sam@pinpointcres.com

FOR SALE

PINPOINT

NORTHTOWN RAW LAND

STORAGE MAX DRIVE, JACKSON, MS 39211



BB MITCHELL

601.586.3220

bb@pinpointcres.com

SAM COX, SIOR

601.586.3220

sam@pinpointcres.com

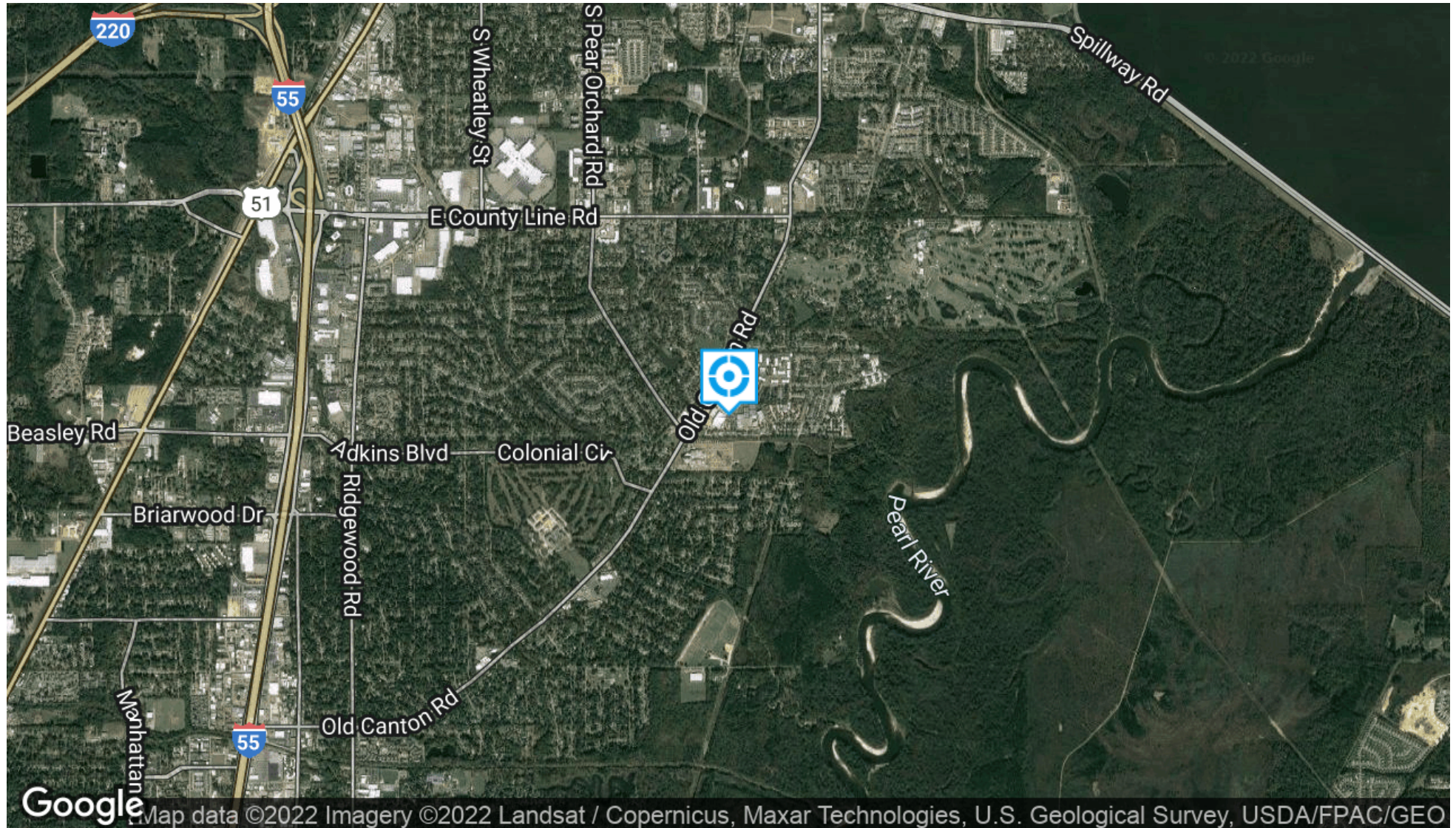
190 EAST CAPITOL STREET | JACKSON, MS 39201 | 601.586.3220 | PINPOINTCRES.COM

FOR SALE

PINPOINT

NORTHTOWN RAW LAND

STORAGE MAX DRIVE, JACKSON, MS 39211



BB MITCHELL

601.586.3220

bb@pinpointcres.com

SAM COX, SIOR

601.586.3220

sam@pinpointcres.com

190 EAST CAPITOL STREET | JACKSON, MS 39201 | 601.586.3220 | PINPOINTCRES.COM

FOR SALE

PINPOINT

NORTHTOWN RAW LAND

STORAGE MAX DRIVE, JACKSON, MS 39211



Map data ©2022 Imagery ©2022 , Maxar Technologies, U.S. Geological Survey, USDA/FPAC/GEO

BB MITCHELL

601.586.3220

bb@pinpointcres.com

SAM COX, SIOR

601.586.3220

sam@pinpointcres.com

190 EAST CAPITOL STREET | JACKSON, MS 39201 | 601.586.3220 | PINPOINTCRES.COM

FOR SALE

PINPOINT

NORTHTOWN RAW LAND

STORAGE MAX DRIVE, JACKSON, MS 39211



BB MITCHELL

601.586.3220

bb@pinpointcres.com

SAM COX, SIOR

601.586.3220

sam@pinpointcres.com

190 EAST CAPITOL STREET | JACKSON, MS 39201 | 601.586.3220 | PINPOINTCRES.COM

FOR SALE

PINPOINT

NORTHTOWN RAW LAND

STORAGE MAX DRIVE, JACKSON, MS 39211



BB MITCHELL

601.586.3220

bb@pinpointcres.com

SAM COX, SIOR

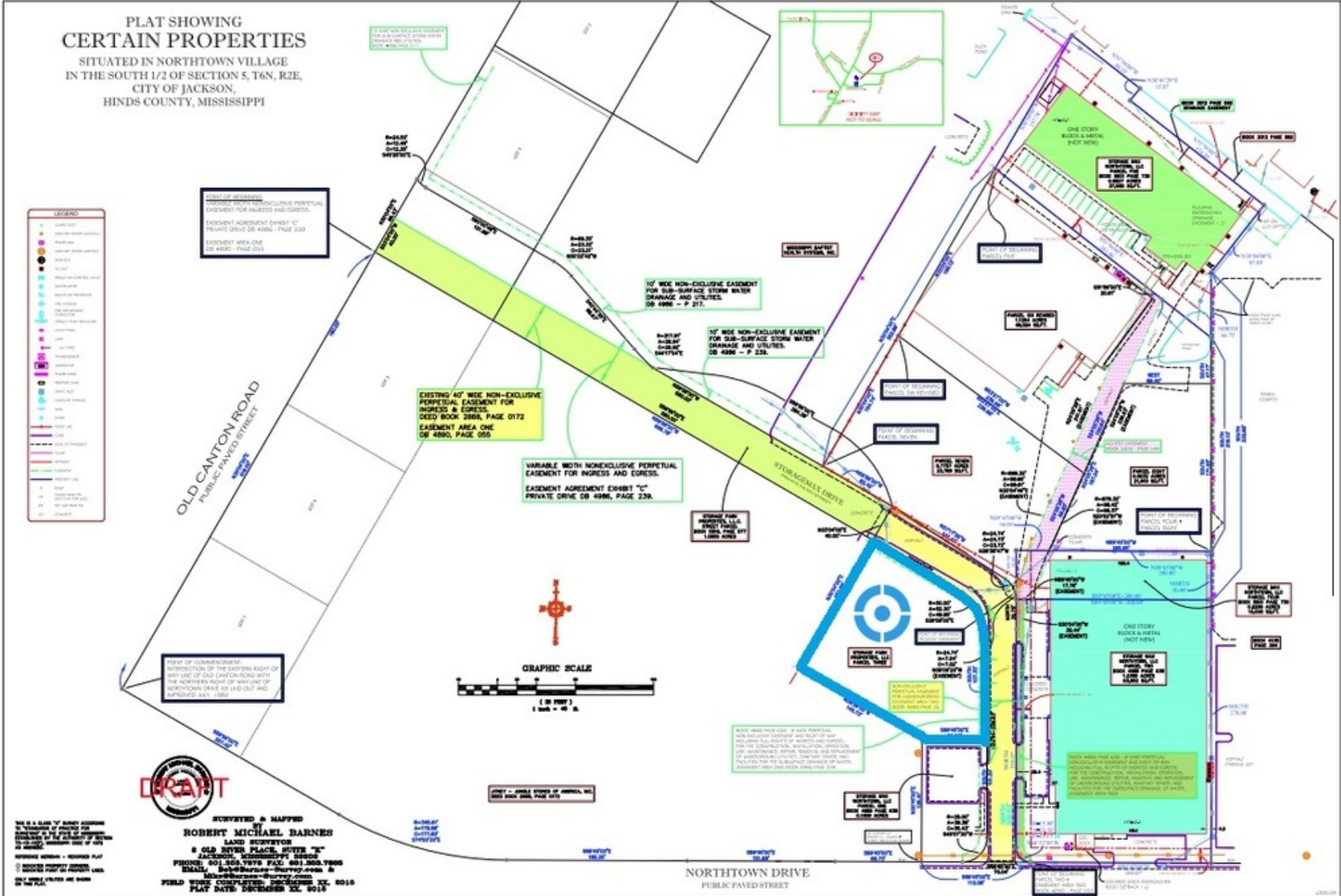
601.586.3220

sam@pinpointcres.com

190 EAST CAPITOL STREET | JACKSON, MS 39201 | 601.586.3220 | PINPOINTCRES.COM

NORTHTOWN RAW LAND

STORAGE MAX DRIVE, JACKSON, MS 39211



BB MITCHELL

601.586.3220

bb@pinpointcres.com

SAM COX. SIOR

601.586.3220

sam@pinpointcres.com

FOR SALE

PINPOINT

NORTHTOWN RAW LAND

STORAGE MAX DRIVE, JACKSON, MS 39211



BB MITCHELL

601.586.3220

bb@pinpointcres.com

SAM COX, SIOR

601.586.3220

sam@pinpointcres.com

190 EAST CAPITOL STREET | JACKSON, MS 39201 | 601.586.3220 | PINPOINTCRES.COM

FOR SALE

PINPOINT

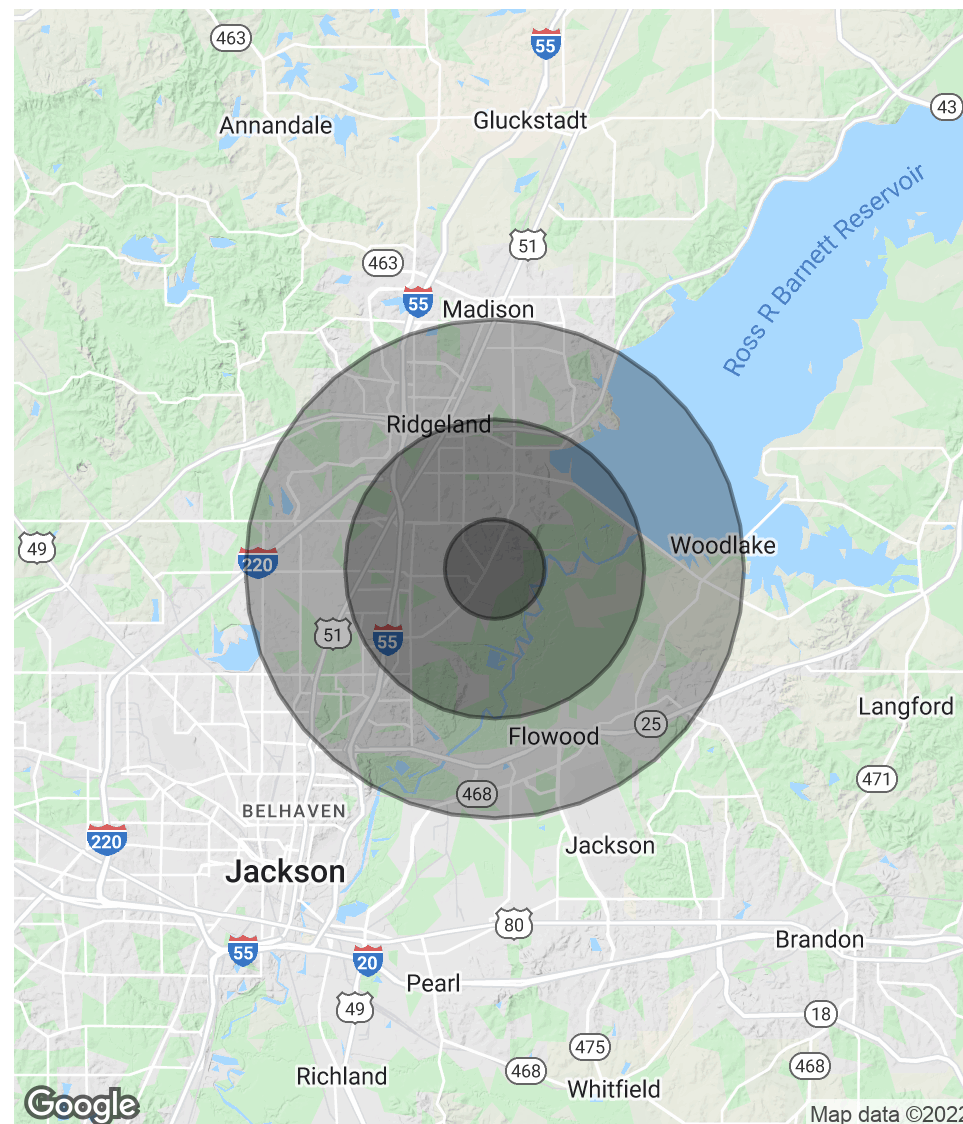
NORTHTOWN RAW LAND

STORAGE MAX DRIVE, JACKSON, MS 39211

POPULATION	1 MILE	3 MILES	5 MILES
Total Population	6,264	48,693	97,316
Average Age	34.3	33.4	34.1
Average Age (Male)	33.9	32.3	33.2
Average Age (Female)	34.3	34.2	35.1

HOUSEHOLDS & INCOME	1 MILE	3 MILES	5 MILES
Total Households	2,697	21,308	40,375
# of Persons per HH	2.3	2.3	2.4
Average HH Income	\$76,527	\$72,442	\$73,163
Average House Value	\$223,466	\$212,907	\$216,203

* Demographic data derived from 2010 US Census



BB MITCHELL

601.586.3220
bb@pinpointcres.com

SAM COX, SIOR

601.586.3220
sam@pinpointcres.com

FOR SALE

PINPOINT

NORTHTOWN RAW LAND

STORAGE MAX DRIVE, JACKSON, MS 39211



BB MITCHELL

Vice President

bb@pinpointcres.com

Direct: 601.586.3220 | Cell: 601.934.5008

PROFESSIONAL BACKGROUND

Ellis "BB" Mitchell is an Associate Broker at Pinpoint Commercial Real Estate, LLC. Since joining the real estate industry, BB has successfully completed over 100 transactions to date. BB advises and represents clients in asset classes that include industrial, office and retail. His core duties include landlord representation, site selection, lease analysis, lease and sublease negotiations, as well as acquisition and disposition of assets.

Prior to joining Pinpoint, BB worked as a leasing agent for Olymbec USA LLC in Memphis, TN. BB was in charge of the leasing for a portfolio that included over 8 million square feet of industrial, flex and retail space in the Memphis MSA.

Before Olymbec USA LLC, BB worked as an accountant for the Office of the State Treasurer in Jackson, MS. BB graduated from the University of Mississippi with a bachelor's degree of Accountancy and a minor in Real Estate. BB and his family attend Christ United Methodist Church in Jackson, MS.

BB MITCHELL

601.586.3220

bb@pinpointcres.com

SAM COX, SIOR

601.586.3220

sam@pinpointcres.com

NORTHTOWN RAW LAND

STORAGE MAX DRIVE, JACKSON, MS 39211



SAM COX, SIOR

President

sam@pinpointcres.com

Direct: 601.586.3220

PROFESSIONAL BACKGROUND

Sam is the founder and president of Pinpoint Commercial Real Estate. Sam has built a large portfolio of clients with a primary goal to exceed their expectation in a reputable and professional manner. Sam is one of Mississippi's top producers, having completed over 100 million in real estate transactions.

His specialties include occupancy solutions for Landlords, representing Tenants in complex lease transactions, advising clients on site selection, acquisition/disposition of income producing property, assisting special servicers/lenders with non-performing assets, build-to-suit's, & third-party asset management.

Sam's attention to detail and ability to solve problems help clients make better decisions related to their real estate needs. Sam has been fortunate to have gain the trust of local, regional and national developers that see the value Sam brings to the process. Sam is a member of St. Joesph's Catholic Church in Gluckstadt, MS.

EDUCATION

B.S. degree in Geological Engineering from the University of Mississippi

M.B.A. degree from Millsaps College

MEMBERSHIPS

Society of Industrial and Office REALTORS (SIOR)

Mississippi Commercial Association of REALTORS (MCAR)

International Council of Shopping Centers (ICSC)

Urban Land Institute (ULI)

BB MITCHELL

601.586.3220

bb@pinpointcres.com

SAM COX, SIOR

601.586.3220

sam@pinpointcres.com