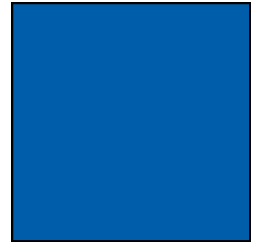


OFFICE CONDO FOR SALE

Glenridge Park Place

6511 Glenridge Park Place, Louisville, KY 40222



- *2,909± SF (3 combined units)*
 - *Unit #7: 937± SF - 1st floor*
 - *Unit #9: 923± SF - 1st floor*
 - *Unit #10: 1,049± SF - 2nd floor*
- *Prime end-cap with outdoor patio*
- *Over 40 new windows throughout*
- *Ample parking*
- *Zoned OR-3*
- *Potential to divide*

Rhonda Karageorge, CCIM, SIOR
(502) 744-9175
(502) 379-6003
rk@ccre.biz

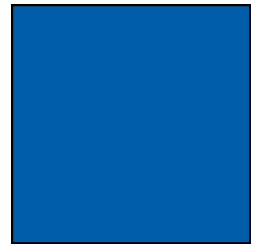


Commonwealth Commercial Real Estate, 10444 Bluegrass Parkway, Louisville, Kentucky 40299
Phone: (502) 379-6000 | www.ccre.biz | Licensed in Kentucky and Indiana

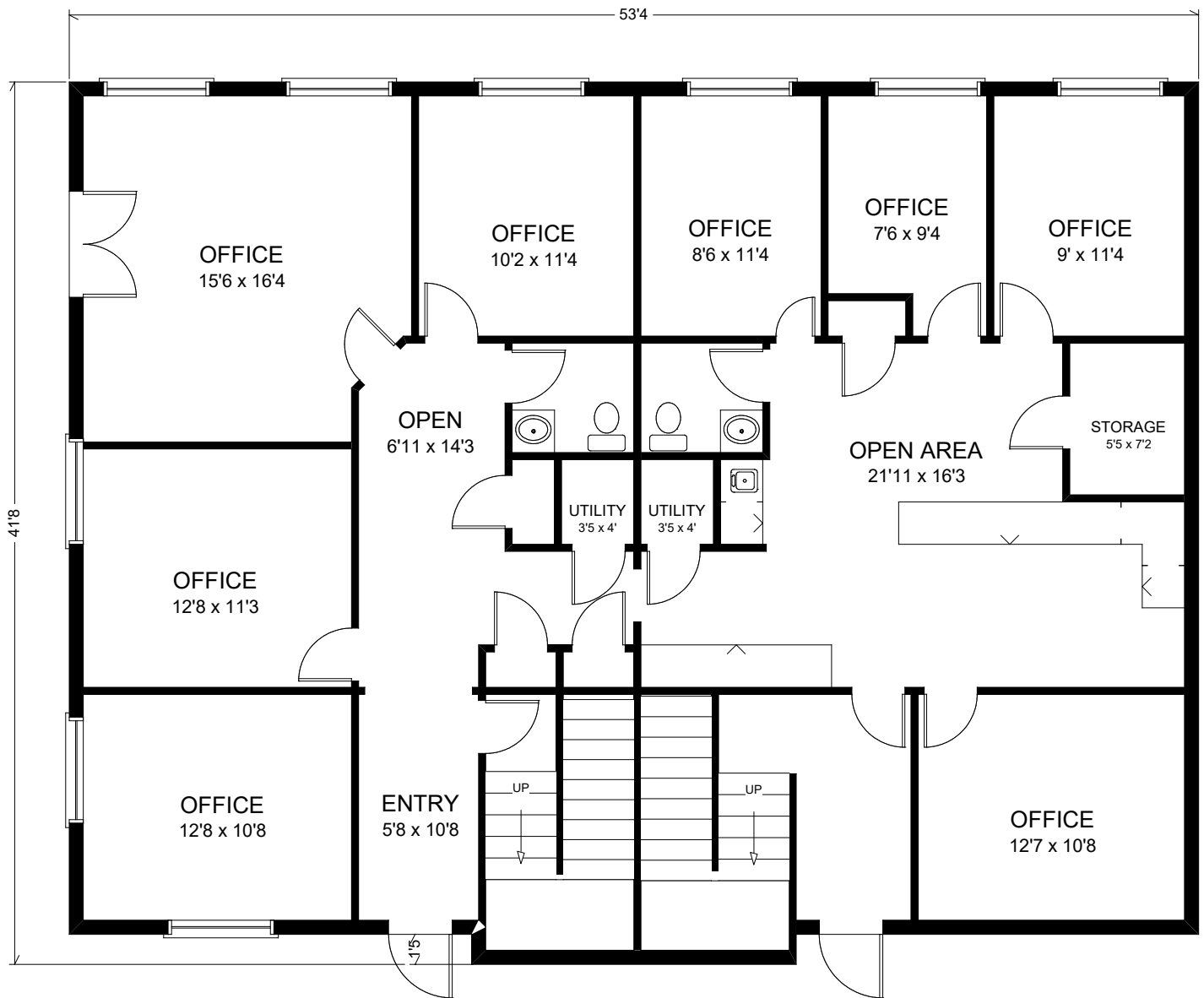
We obtained this information from sources we believe are reliable, however, we make no guarantee, warranty or representation about it. It is provided subject to the possibility of errors, omissions, change of price, rental or other conditions, prior sale, lease or financing, or withdrawal without notice. Images or plans presented are not architectural or "as built" drawings and are presented to give an approximation of space/dimensions and, therefore, no warranty or representation, express or implied, is made to their accuracy. It is your responsibility to independently verify that the property is acceptable to you and for your intended use.

OFFICE CONDO FOR SALE

Glenridge Park Place
6511 Glenridge Park Place, Louisville, KY 40222



First Floor Plan

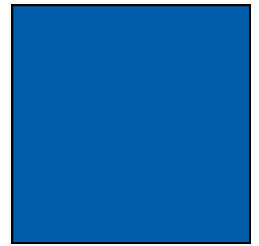


Commonwealth Commercial Real Estate, 10444 Bluegrass Parkway, Louisville, Kentucky 40299
Phone: (502) 379-6000 | www.ccre.biz | Licensed in Kentucky and Indiana

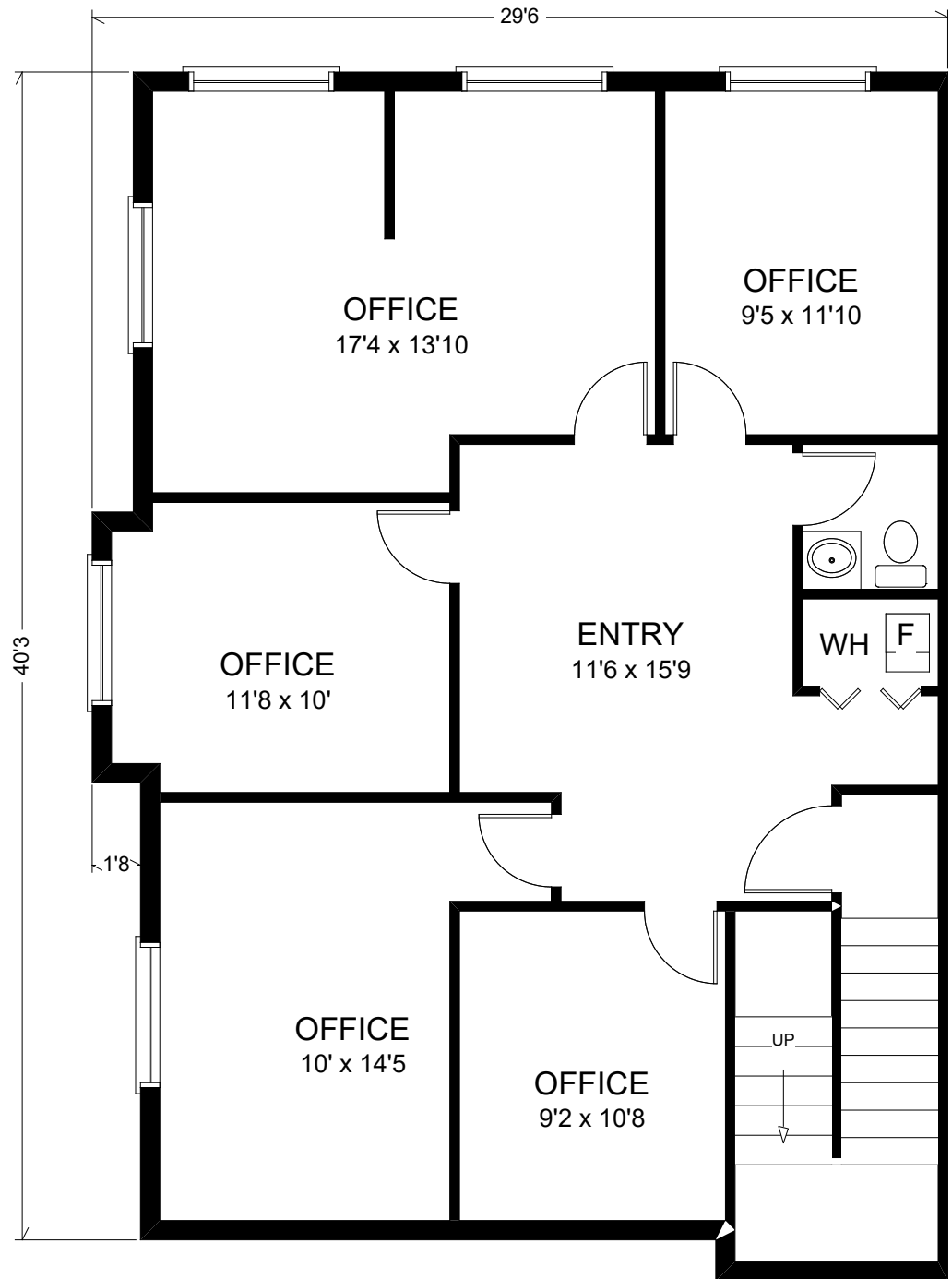
We obtained this information from sources we believe are reliable, however, we make no guarantee, warranty or representation about it. It is provided subject to the possibility of errors, omissions, change of price, rental or other conditions, prior sale, lease or financing, or withdrawal without notice. Images or plans presented are not architectural or "as built" drawings and are presented to give an approximation of space/dimensions and, therefore, no warranty or representation, express or implied, is made to their accuracy. It is your responsibility to independently verify that the property is acceptable to you and for your intended use.

OFFICE CONDO FOR SALE

Glenridge Park Place
6511 Glenridge Park Place, Louisville, KY 40222



Second Floor Plan



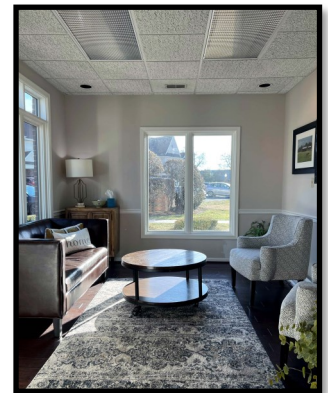
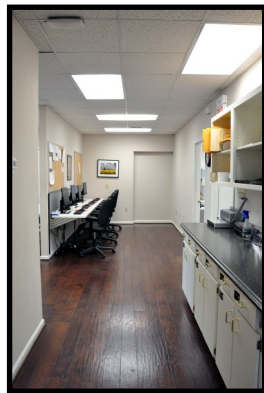
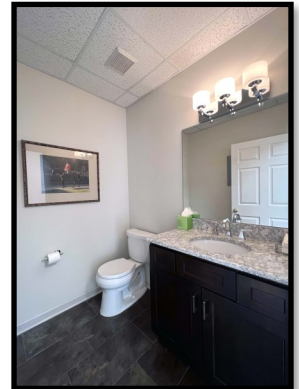
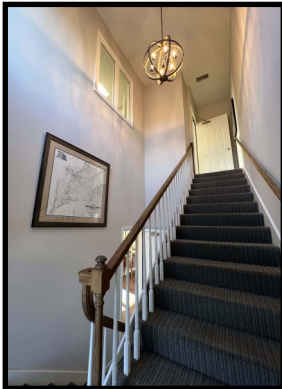
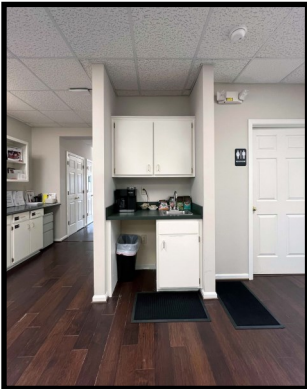
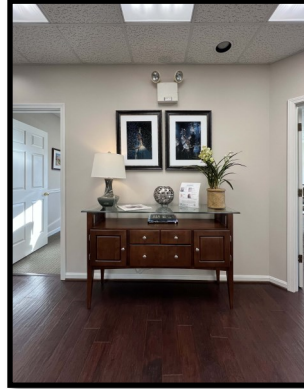
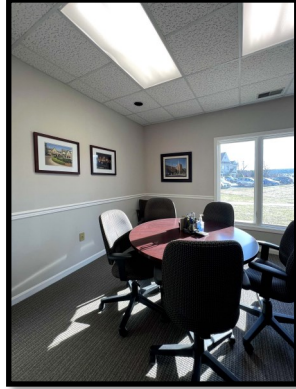
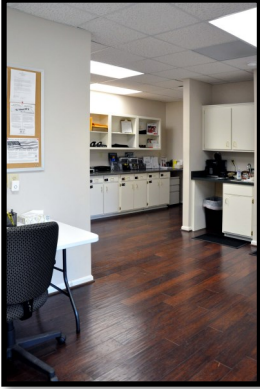
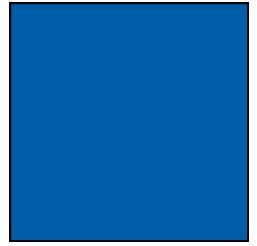
Commonwealth Commercial Real Estate, 10444 Bluegrass Parkway, Louisville, Kentucky 40299
Phone: (502) 379-6000 | www.ccre.biz | Licensed in Kentucky and Indiana

We obtained this information from sources we believe are reliable, however, we make no guarantee, warranty or representation about it. It is provided subject to the possibility of errors, omissions, change of price, rental or other conditions, prior sale, lease or financing, or withdrawal without notice. Images or plans presented are not architectural or "as built" drawings and are presented to give an approximation of space/dimensions and, therefore, no warranty or representation, express or implied, is made to their accuracy. It is your responsibility to independently verify that the property is acceptable to you and for your intended use.

OFFICE CONDO FOR SALE

Glenridge Park Place

6511 Glenridge Park Place, Louisville, KY 40222



Commonwealth Commercial Real Estate, 10444 Bluegrass Parkway, Louisville, Kentucky 40299

Phone: (502) 379-6000 | www.ccre.biz | Licensed in Kentucky and Indiana

We obtained this information from sources we believe are reliable, however, we make no guarantee, warranty or representation about it. It is provided subject to the possibility of errors, omissions, change of price, rental or other conditions, prior sale, lease or financing, or withdrawal without notice. Images or plans presented are not architectural or "as built" drawings and are presented to give an approximation of space/dimensions and, therefore, no warranty or representation, express or implied, is made to their accuracy. It is your responsibility to independently verify that the property is acceptable to you and for your intended use.