

NEW DEVELOPMENT

3600 E. Grand River Avenue / Howell, MI



MID-AMERICA®
Real Estate-Michigan, Inc.

FOR LEASE, SALE OR
BUILD TO SUIT



RETAIL OPPORTUNITY

NEW DEVELOPMENT

Address

3600 E. Grand River Avenue
Howell, MI 48843

Availability

Outlot Drive-Thru:

1,600 SF - 6,790 SF

Junior Box:

Up to 23,200 SF

Features

- Prime location on Grand River Avenue, just west of Latson Road.
- Situated directly across from Grand River Plaza (Hobby Lobby, Dunham's, Family Farm & Home, Big Lots), which is starting a large remodel in 2024.
- Surrounded by national big box retailers Home Depot, Meijer, Lowe's and Meijer.
- 391' of frontage along Grand River Avenue, the property is zoned as Regional Commercial, offering versatile opportunities such as retail establishments, restaurants and bars, childcare centers, financial institutions and medical offices among others. With Special Use approval, drive-through restaurants, service stations and climate-controlled indoor commercial storage are permitted.
- Over 26,000 cars pass the site daily.

Area Tenants

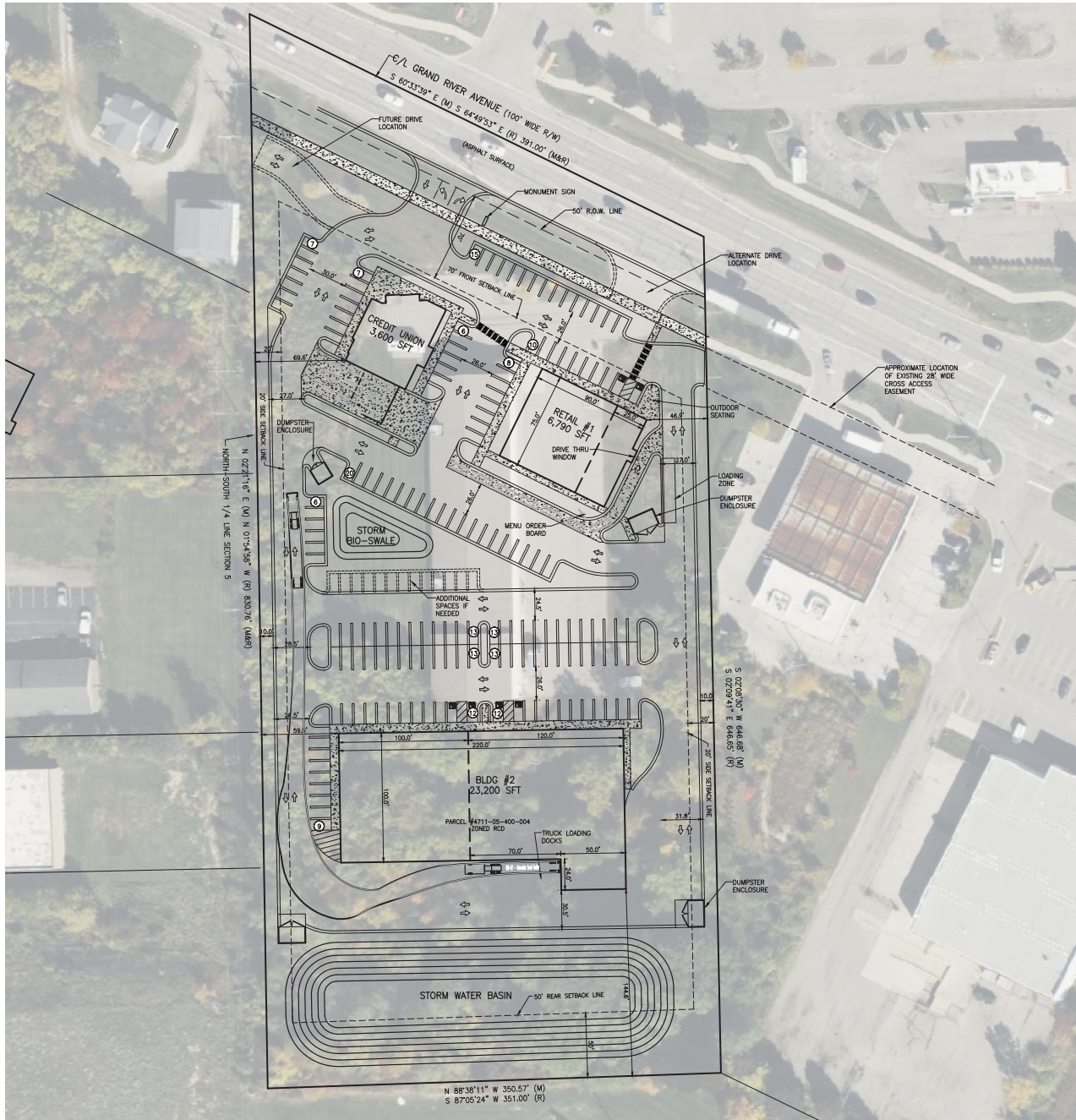


Demographics (2023)

	1 MILE	3 MILES	5 MILES
POPULATION	3,781	24,757	49,773
HOUSEHOLDS	1,733	10,060	20,143
AVG HOUSEHOLD INCOME	\$93,025	\$107,493	\$109,570
DAYTIME POPULATION	5,614	21,456	45,640



NEW DEVELOPMENT



NEW DEVELOPMENT



NEW DEVELOPMENT

George
Sheena

Mid-America Real Estate -
Michigan, Inc.

T: 248.855.6800

GSheena@MidAmericaGrp.com

Jared
Gell

Mid-America Real Estate -
Michigan, Inc.

T: 248.855.6800

JGell@MidAmericaGrp.com



MID-AMERICA®
Real Estate-Michigan, Inc.

38500 Woodward Ave, Suite 100
Bloomfield Hills, Michigan 48304
248.855.6800
MidAmericaGrp.com



CONTACT