



W E L C O M E T O H A R B O R P O I N T

2187

ATLANTIC / STREET

STAMFORD, CONN.



NEWMARK

HARBOR POINT LIVE. WORK. PLAY.



2+

Miles of waterfront boardwalk

4

Marinas



15+

Restaurants

20+

Acres of actively programmed parks



4K+

Apartments



Contact Exclusive Brokers:

BENJAMIN GOLDSTEIN
914-610-5954 | benjamin.goldstein@nrmk.com

CORY GUBNER
203-531-3626 | cory.gubner@nrmk.com

NEWMARK

2187



PROPERTY HIGHLIGHTS

- Located in the heart of Harbor Point
- Surrounded by retail & restaurants
- 5 minute walk to train, 53-minute ride to NYC
- Spectacular water views
- Shuttle rides to the train station
- Fully equipped fitness center

AVAILABLE SPACES

Partial 4 th	7,599 SF	High-end second generation buildout
Partial 6 th	3,271 SF	Prebuild ready for occupancy
Partial 7 th	3,134 SF	Prebuild under construction

BRAND NEW MODERN LOBBY



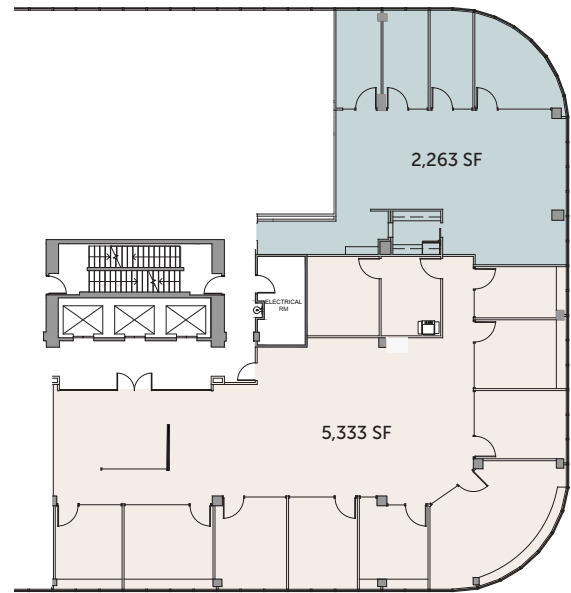
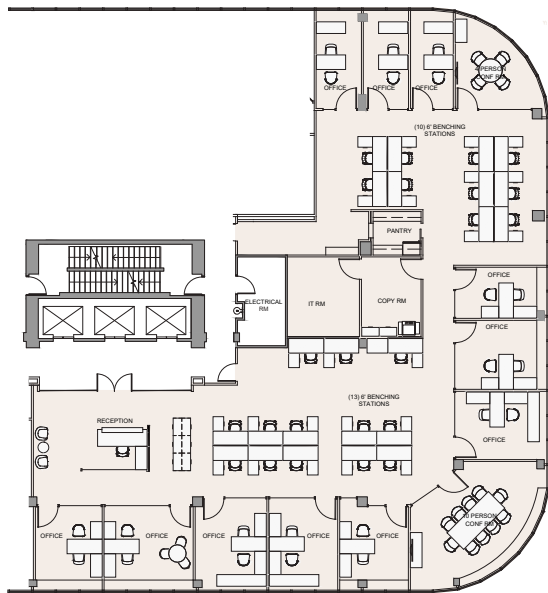
PRE-BUILD FINISHES



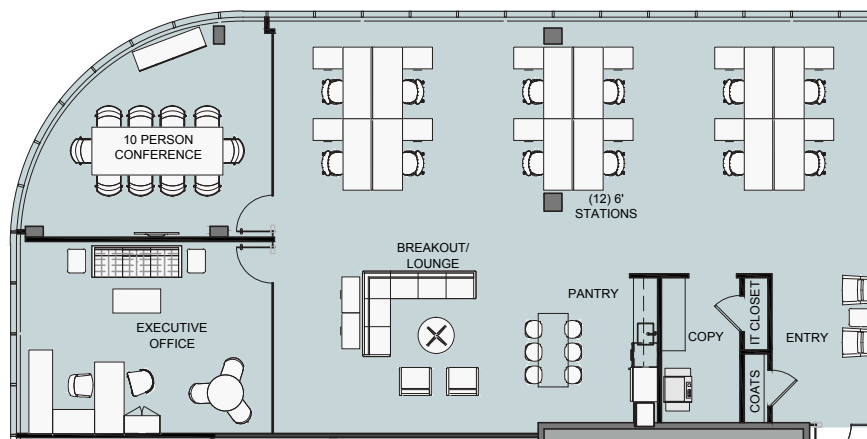
PRE-BUILD FINISHES



PARTIAL 4TH FLOOR: 7,599 SF (HIGH-END 2ND GENERATION BUILDOUT)



PARTIAL 6TH FLOOR: 3,271 SF (PREBUILD READY FOR OCCUPANCY)



Contact Exclusive Brokers:

BENJAMIN GOLDSTEIN
914-610-5954 | benjamin.goldstein@nmrk.com

CORY GUBNER
203-531-3626 | cory.gubner@nmrk.com

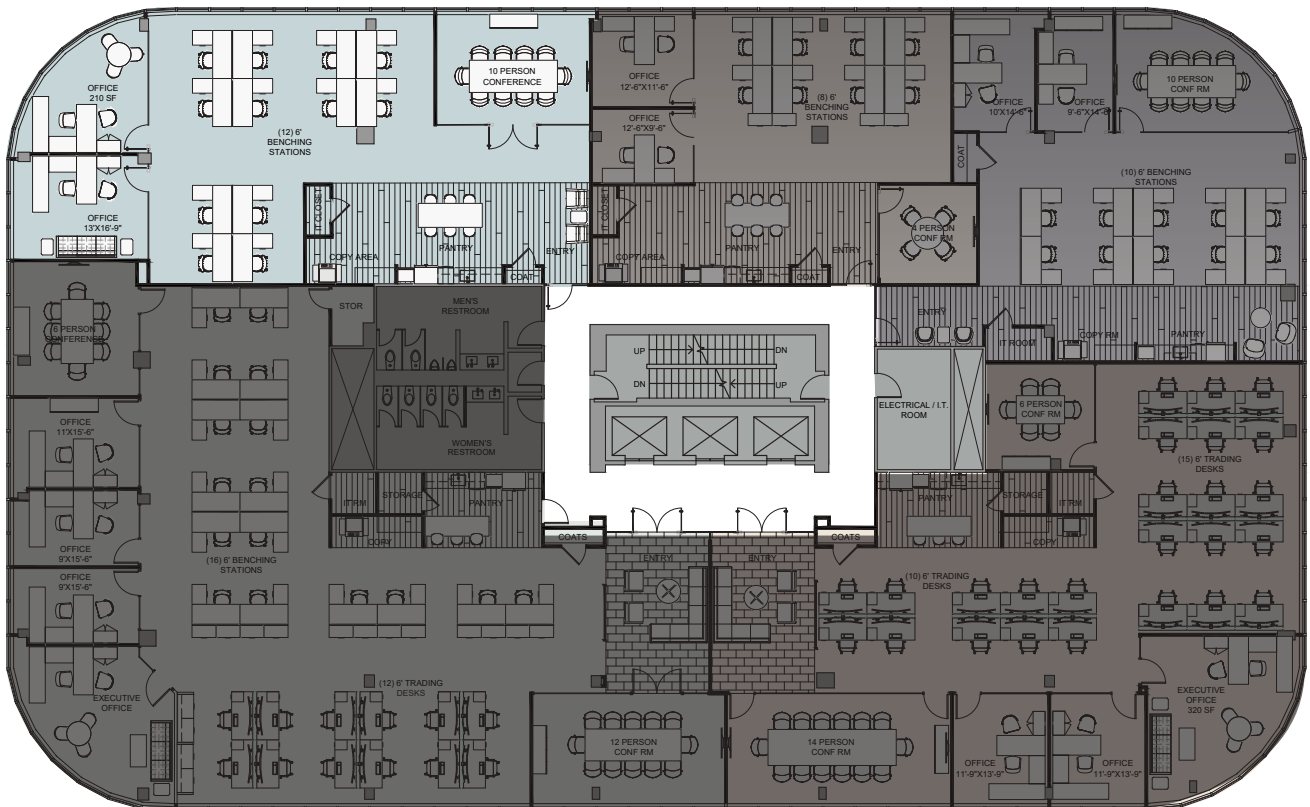
NEWMARK

PARTIAL 7TH FLOOR: 3,134 SF (PREBUILD UNDER CONSTRUCTION)

SUITE 701
3,134 SF

SUITE 702
LEASED

SUITE 703
LEASED



SUITE 705
LEASED

SUITE 704
LEASED

Contact Exclusive Brokers:

BENJAMIN GOLDSTEIN
914-610-5954 | benjamin.goldstein@nrmk.com

CORY GUBNER
203-531-3626 | cory.gubner@nrmk.com

NEWMARK