

**SALE**

# 7900 Doyle Springs Rd

**7900 DOYLE SPRINGS RD**

Little Rock, AR 72209

---

**PRESENTED BY:**

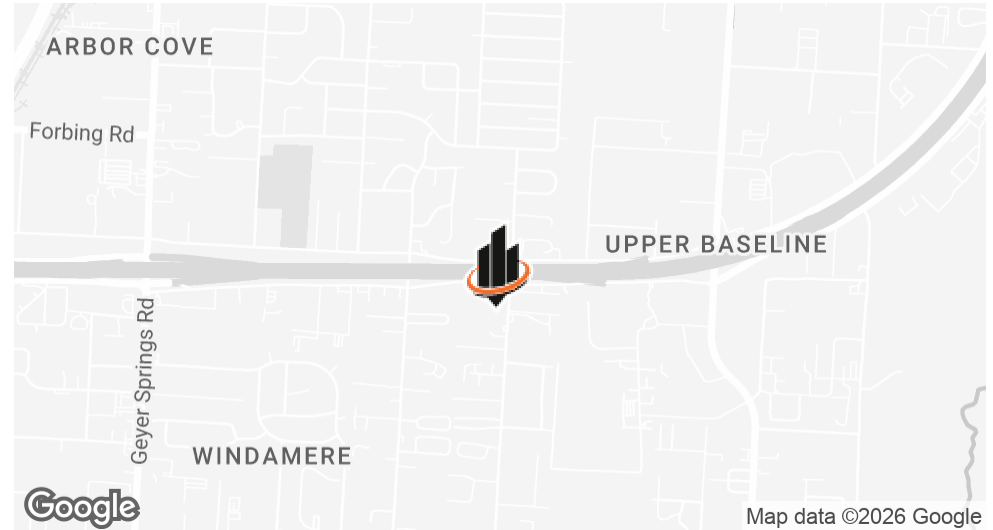
**NATHAN HUTCHINS**

O: 501.912.3660

nathan.hutchins@svn.com

AR #PB00063530

## PROPERTY SUMMARY



### PROPERTY HIGHLIGHTS

- ±7,620 SF total building
- ±1,750 SF office / ±5,870 SF warehouse
- 2.34 Acres of laydown yard
- Fully fenced
- Functional office/warehouse layout
- Ideal for industrial, service, or distribution users
- Ample warehouse space for storage or operations
- Flexible configuration to suit a variety of uses
- Located in an established Little Rock industrial area

### NATHAN HUTCHINS

O: 501.912.3660  
nathan.hutchins@svn.com  
AR #PB00063530

### PROPERTY DESCRIPTION

Position your business at 7900 Doyle Springs Rd in Little Rock. This ±7,620 SF office/warehouse features approximately 1,750 SF of office space with a large warehouse component, ideal for industrial, service, or distribution users. Designed for efficiency and flexibility, the property supports a wide range of operations, offering a strong opportunity for both owner-users and investors in a well-located industrial corridor.

### OFFERING SUMMARY

<b>SALE PRICE:</b>	\$949,900
<b>BUILDING SIZE:</b>	7,620 SF

## ADDITIONAL PHOTOS

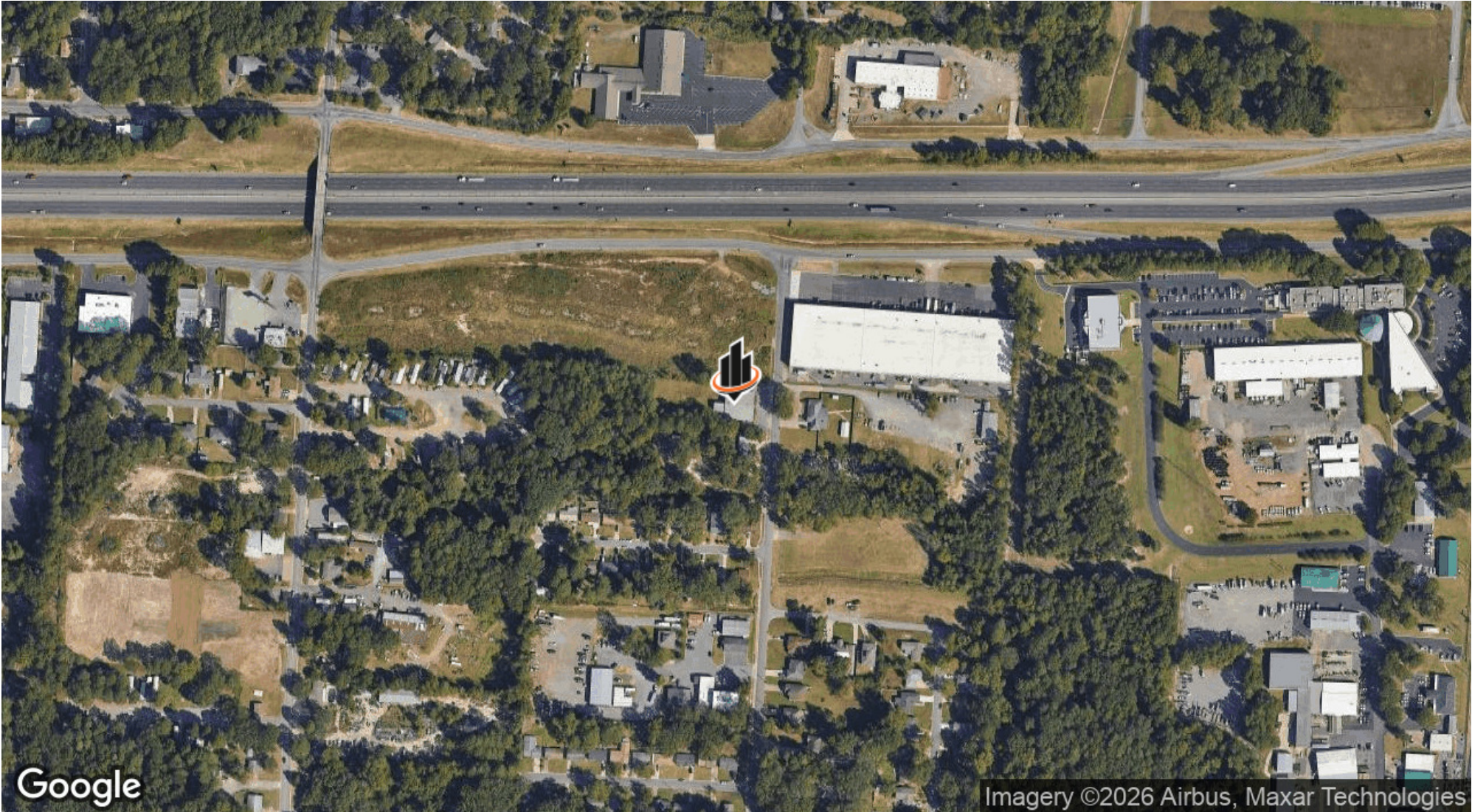


**NATHAN HUTCHINS**  
O: 501.912.3660  
nathan.hutchins@svn.com  
AR #PB00063530

**7900 DOYLE SPRINGS RD** | 7900 Doyle Springs Rd Little Rock, AR 72209

**SVN | ARKBEST REALTY, LLC** 3

**LOCATION MAP**



**NATHAN HUTCHINS**  
O: 501.912.3660  
nathan.hutchins@svn.com  
AR #PB00063530

**7900 DOYLE SPRINGS RD** | 7900 Doyle Springs Rd Little Rock, AR 72209