



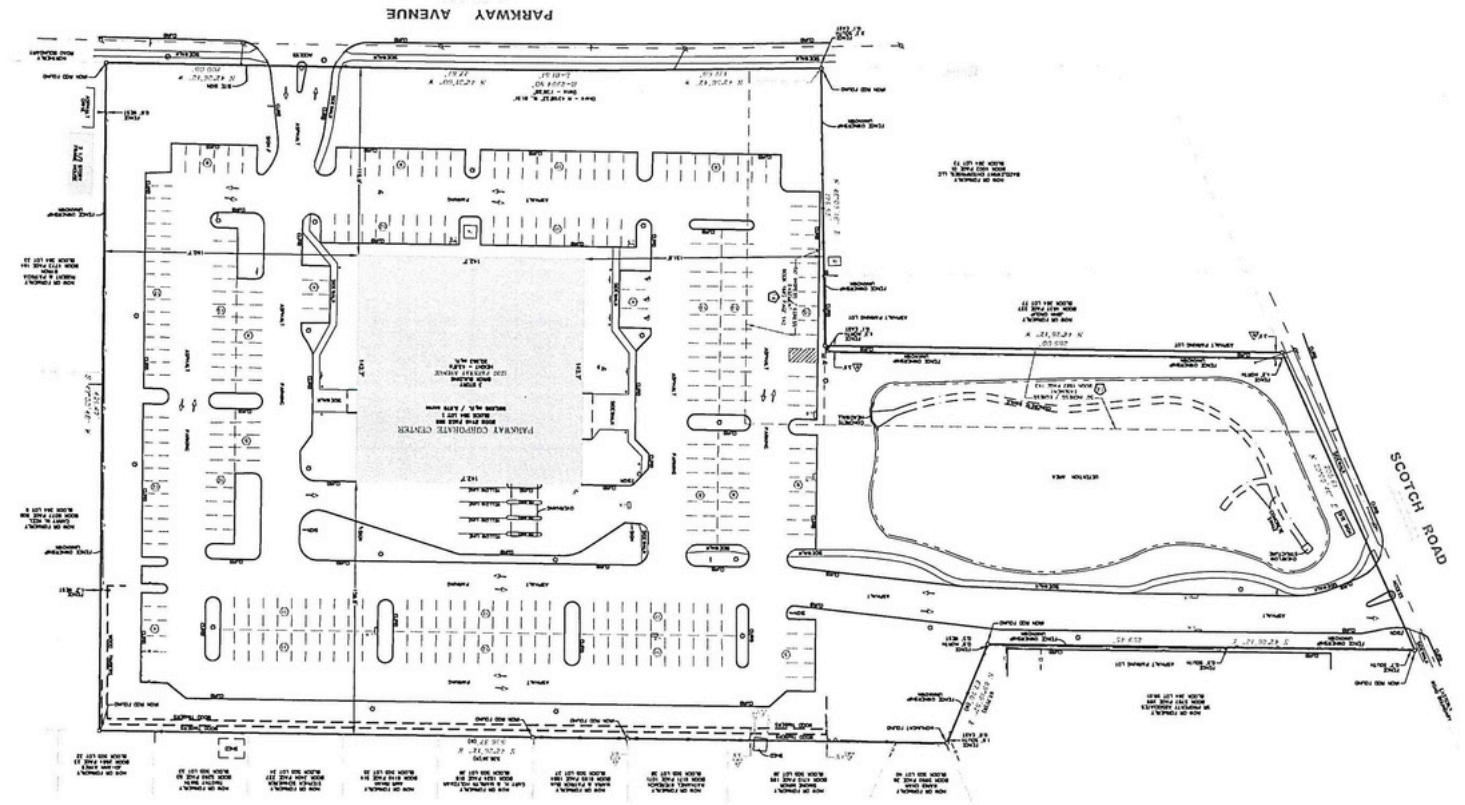
**2,000 SF to 44,100 SF Premier
Office/Medical Space, available for lease.**
1230 Parkway is located at the intersection
of Parkway and Scotch roads across from
Ewing's newly built town center Creating
the conveniences of live work and stay
environment; where everything is a walk or
bike ride away.

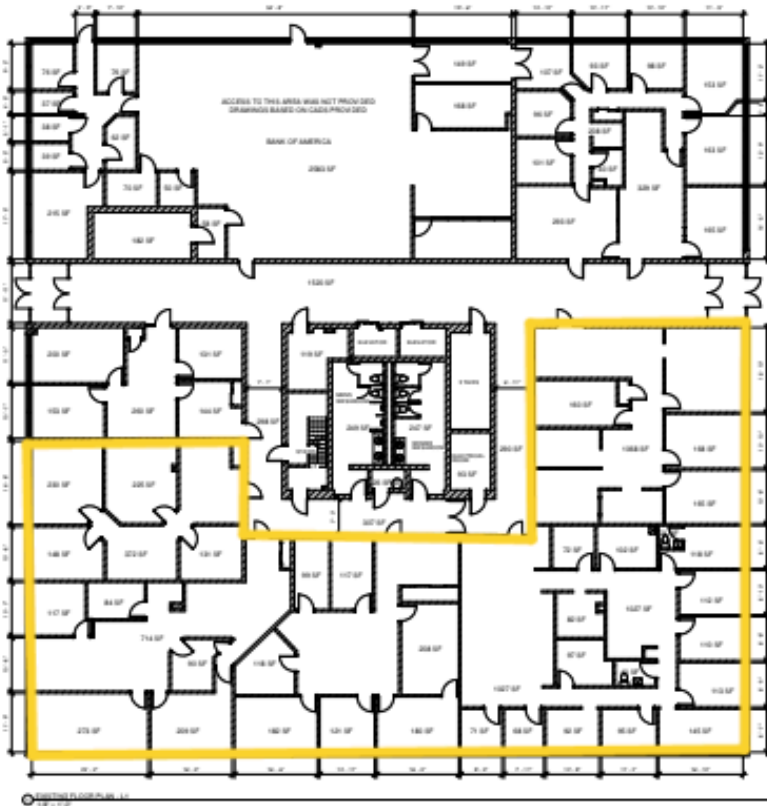
Property Details

Available SF:	44,100
Lot Size:	5.97 acres
Clear Height:	12'
Year Built:	1990
Zoning:	Business Highway
Parking:	196 Surface Parking

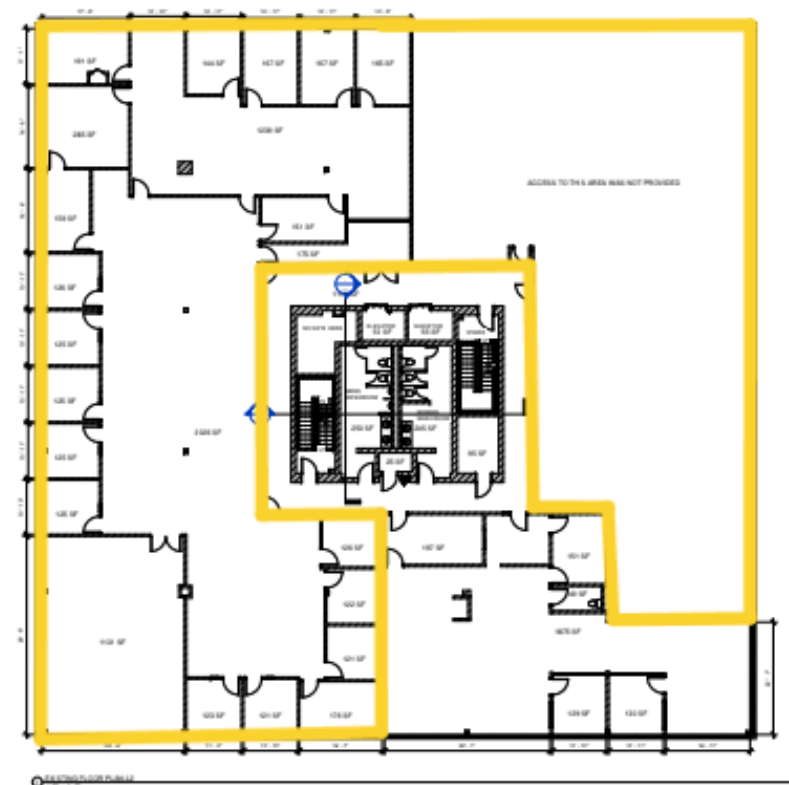
**For More
Information**

Jonathan Lasala (315)-882-7531
jlasala@ironhornenterprises.com
www.ironhornenterprises.com

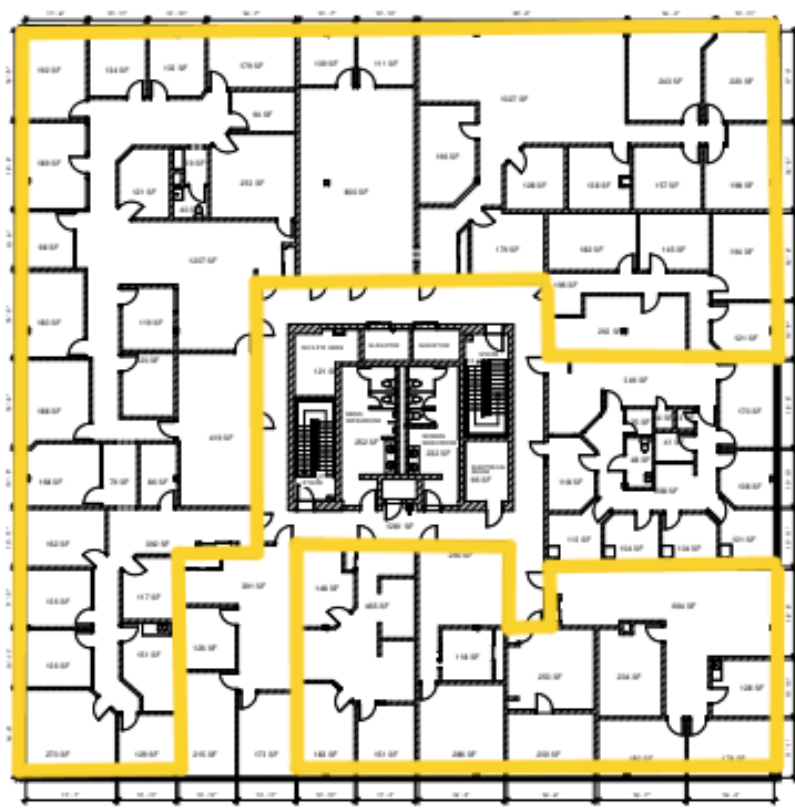




1st Floor 11,330 SF



2nd Floor 16,770 SF



3rd Floor 16,000 SF