

POLLOCK

**CREATIVE
OFFICE SPACE**



The Willoughby

746 Willoughby Way NE | Atlanta, GA 30312

Jeff Pollock, CCIM, SIOR

jp@pollockcommercial.com

O | 404.662.2182

C | 404.964.7060

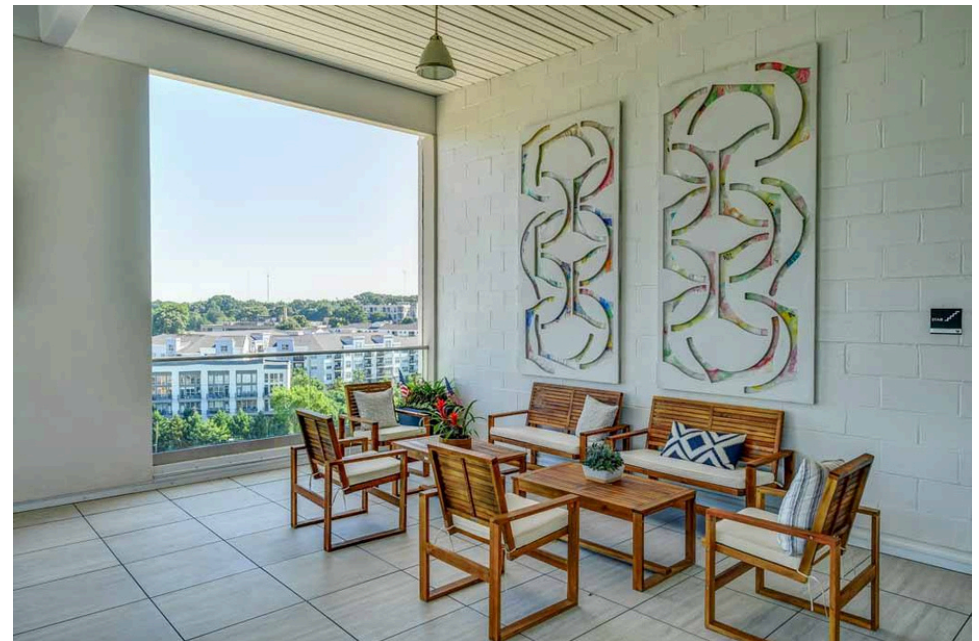
**± 15,196 - 30,392 SF
FOR LEASE**





Upscale Features

- **Rare, quality office opportunity in the Historic Old Fourth Ward**
- **Creative loft office space with upscale features**
- **Free surface and covered deck parking on site**
- **3,800 SF rooftop amenity deck for tenant entertainment with panoramic skyline city views**

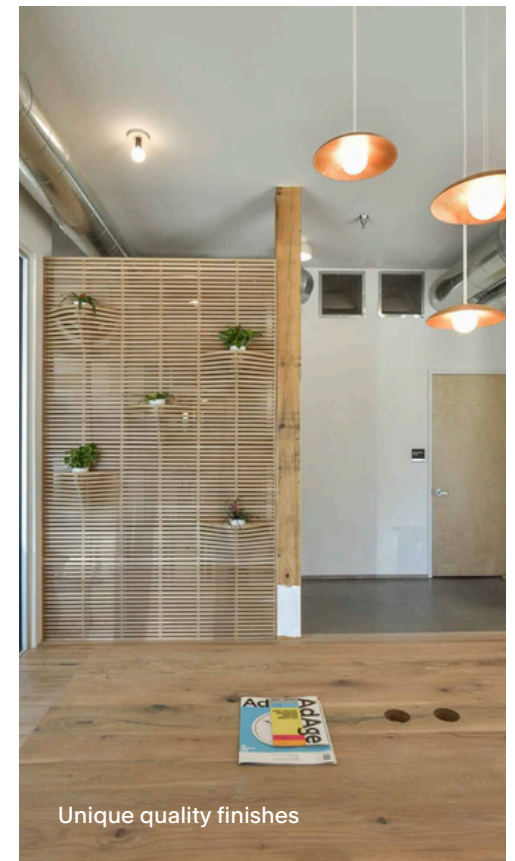




Open floorplan

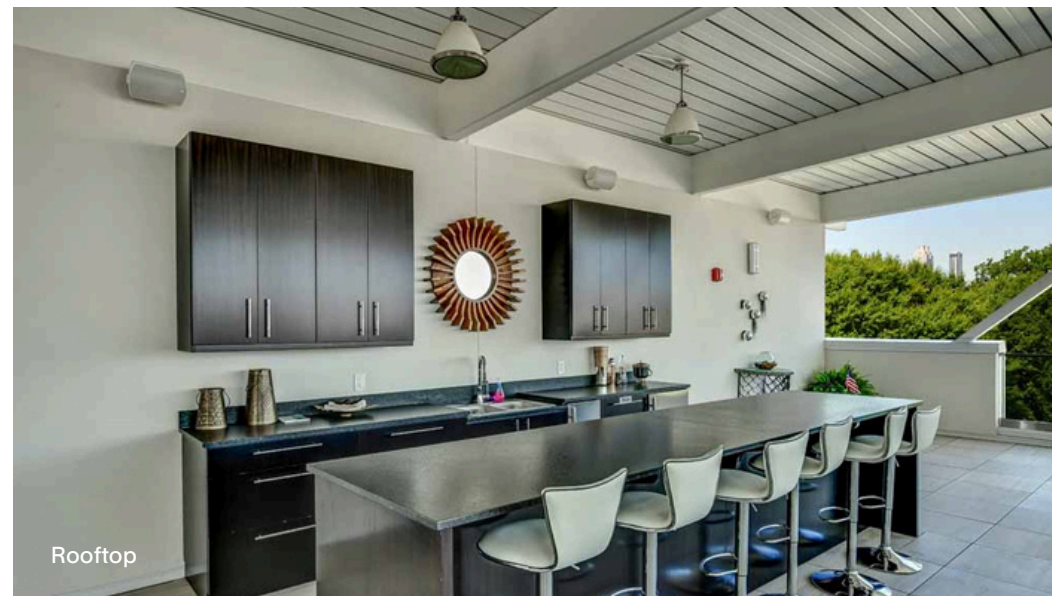


Creative office space



Unique quality finishes

The Willoughby features unique quality finishes that blend industrial character with modern refinement. Polished concrete floors, exposed ceilings, and floor-to-ceiling windows create an open, light-filled environment ideal for creative and professional teams.

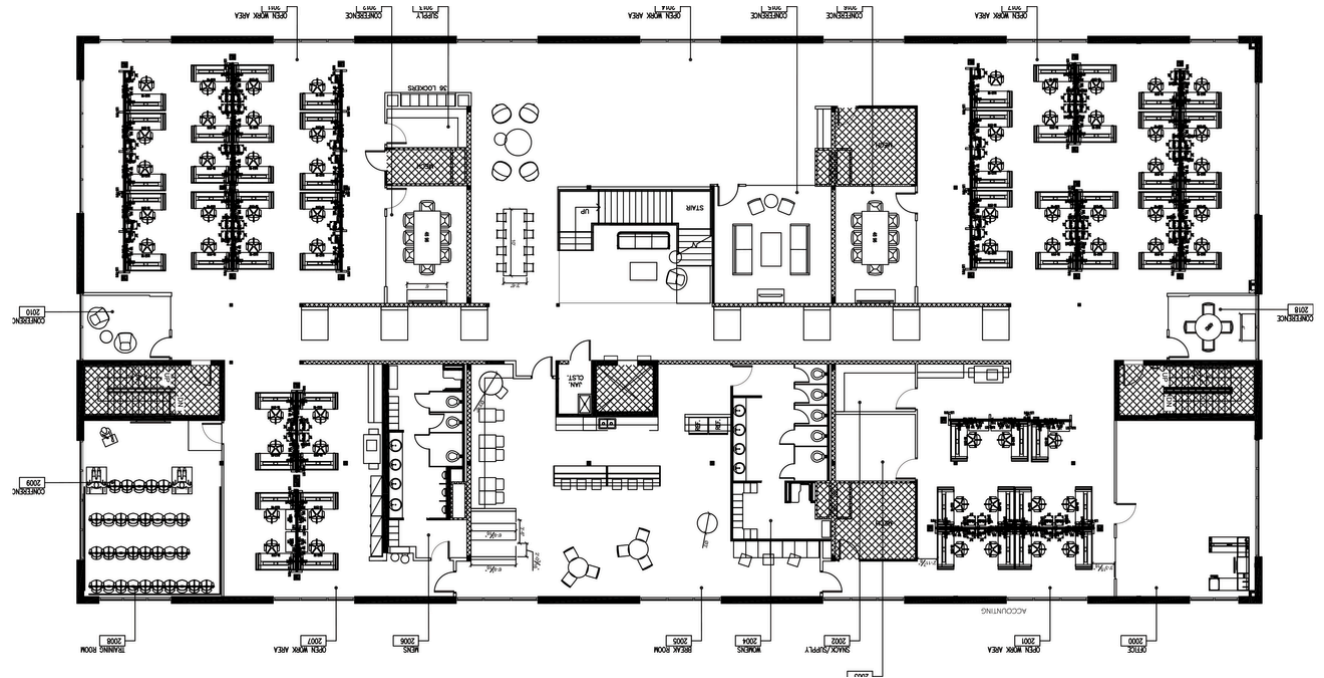


Rooftop

Suite 300 ± 15,196

[VIEW DETAILED INFO](#)

[VIRTUAL TOUR](#)



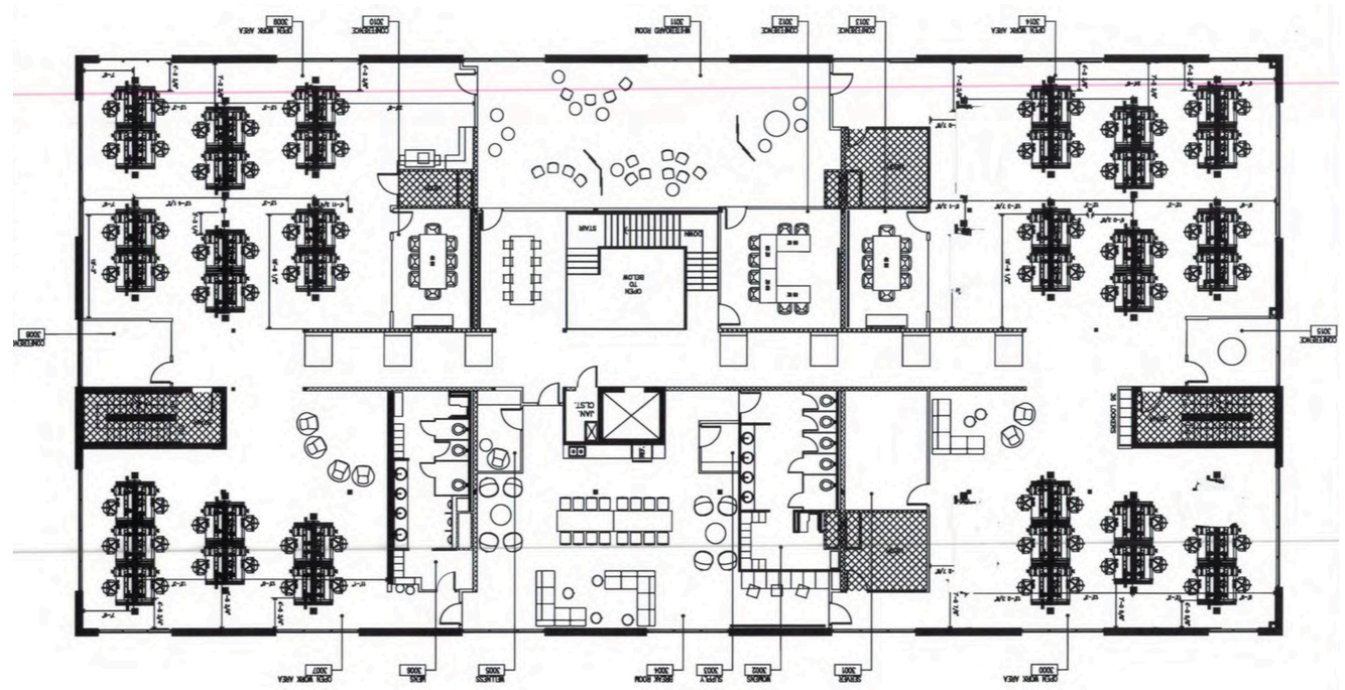
Suite 300 on the third floor offers ±15,196 SF of open, customizable space with high ceilings and expansive windows, ideal for collaborative teams seeking a flexible and inspiring environment. Suite 300 may be combined with Suite 400 via interior stairwell.

Suite 400

± 15,196

[VIEW DETAILED INFO](#)

[VIRTUAL TOUR](#)



Suite 400 on the top floor features ±15,196 SF of modern workspace with excellent natural light, skyline views, and direct access to The Willoughby's rooftop amenities, blending productivity with lifestyle. Suite 400 may be combined with Suite 300 via interior stairwell.

POLLOCK



Let's get this leased.

Jeff Pollock, CCIM, SIOR

jp@pollockcommercial.com

O | 404.662.2182

C | 404.964.7060

**CORFAC**
INTERNATIONAL