



## INDUSTRIAL SPACE FOR SALE OR LEASE



### PROPERTY FEATURES

- 28,544 SF Total SF Available
- 4,000 SF Office (2 Floors)
- 4 Docks + 1 Ramp
- 24' Clear Ceiling Height
- 3 Phase Power / 480 Volts LED lightning & Fire-Sprinklers
- Racks already in place
- Okeechobee Road Signage
- Plenty of Parking

### LEASE

**Just reduced to \$18.00 PSF Gross**

**For more information contact:**

**Elias G. Patsalos, CCIM**  
Phone: 305-804-9154  
Email: elias@agorare.com

**Michal Bibr**  
Phone: 305-458-4140  
Email: michal@agorare.com



Scan the QR  
code for more  
information

#### Agora Real Estate Group

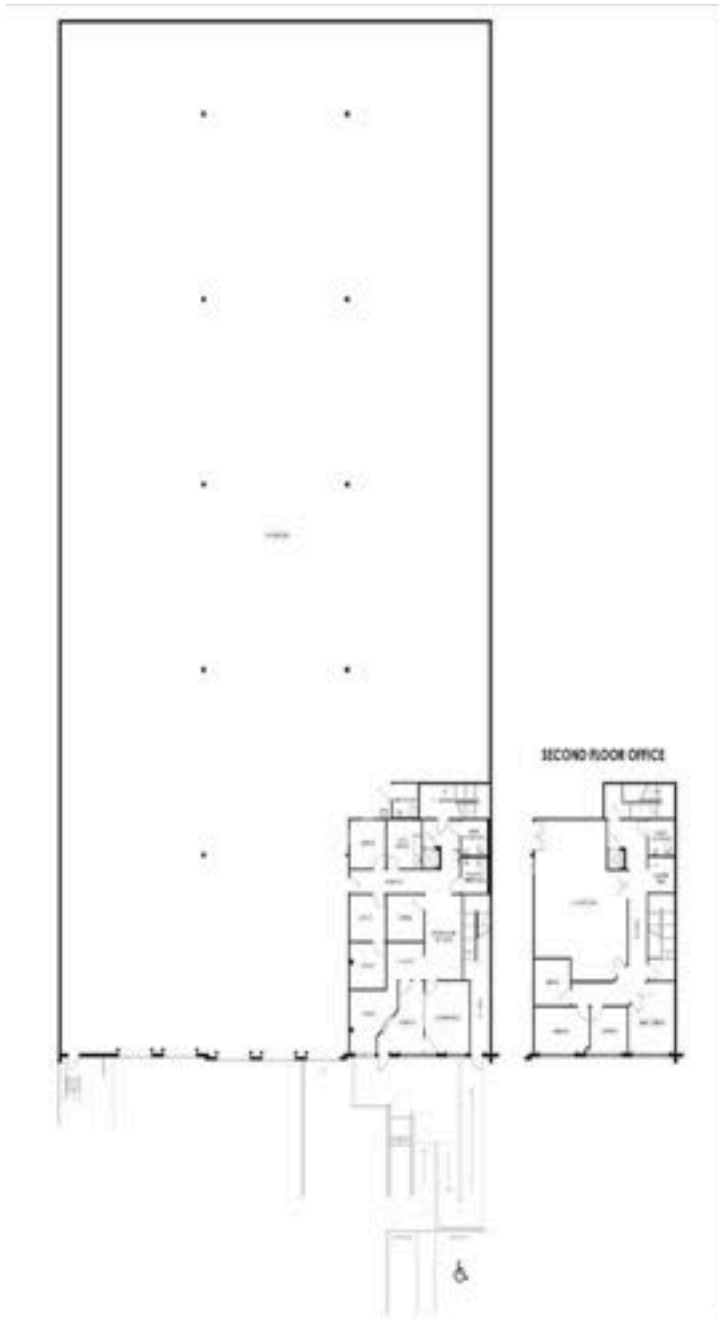
7500 NW 25th Street, Suite 237, Doral, Florida 33122

P: +1 (305) 804-9154 | F: +1 (866) 708-2763 | E: info@agorare.com

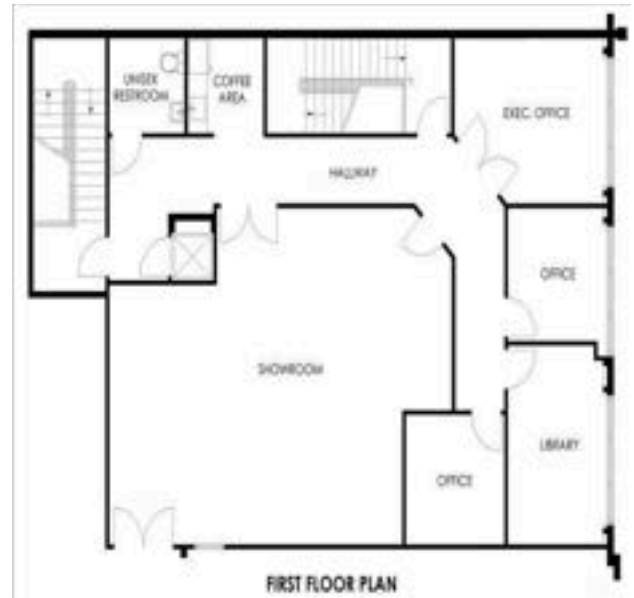
No warranty or representation, expressed or implied, is made as to the accuracy of the information contained herein, and same is submitted subject to errors and omissions.

# PROPERTY FLOOR PLAN

## Warehouse



## Office



### Agora Real Estate Group

7500 NW 25th Street, Suite 237, Doral, Florida 33122

P: +1 (305) 804-9154 | F: +1 (866) 708-2763 | E: [info@agorare.com](mailto:info@agorare.com)

No warranty or representation, expressed or implied, is made as to the accuracy of the information contained herein, and same is submitted subject to errors and omissions.

# Property Photos



## Agora Real Estate Group

7500 NW 25th Street, Suite 237, Doral, Florida 33122

P: +1 (305) 804-9154 | F: +1 (866) 708-2763 | E: [info@agorare.com](mailto:info@agorare.com)

**No warranty or representation, expressed or implied, is made as to the accuracy of the information contained herein, and same is submitted subject to errors and omissions.**