

Nearly 6,000 SF Medical/Office with I-77 Access & Visibility



570 White Pond Dr.
Akron, Ohio

Property Features

- Available for lease: 5,907 SF
 - Suite 100: 5,375 SF
 - Suite 300: 532 SF
- Office or medical use
- Property campus has restaurant on site
- Freeway access & visibility
- Strategically located seconds from I-77 & I-76, minutes from I-71 & I-271



Stacy Tramonte

330 590 8248 • STramonte@pvccinc.com

Barbara Faciana

330 590 8230 • BFaciana@pvccinc.com

NO WARRANTY OR REPRESENTATION, EXPRESS OR IMPLIED, IS MADE AS TO THE ACCURACY OF THE INFORMATION CONTAINED HEREIN, AND THE SAME IS SUBMITTED SUBJECT TO ERRORS, OMISSIONS, CHANGE OF PRICE, RENTAL OR OTHER CONDITIONS, PRIOR SALE, LEASE OR FINANCING, OR WITHDRAWAL WITHOUT NOTICE, AND OF ANY SPECIAL LISTING CONDITIONS IMPOSED BY OUR PRINCIPALS NO WARRANTIES OR REPRESENTATIONS ARE MADE AS TO THE CONDITION OF THE PROPERTY OR ANY HAZARDS CONTAINED THEREIN ARE ANY TO BE IMPLIED.

6155 Rockside Road, Suite 304
Independence, Ohio 44131
216 831 3310
naipvc.com

570 White Pond Dr.
Akron, OH 44320

PHOTOS

Suite 100



570 White Pond Dr.
Akron, OH 44320

Suite 100

PHOTOS



570 White Pond Dr.
Akron, OH 44320

Suite 100

PHOTOS



570 White Pond Dr.
Akron, OH 44320

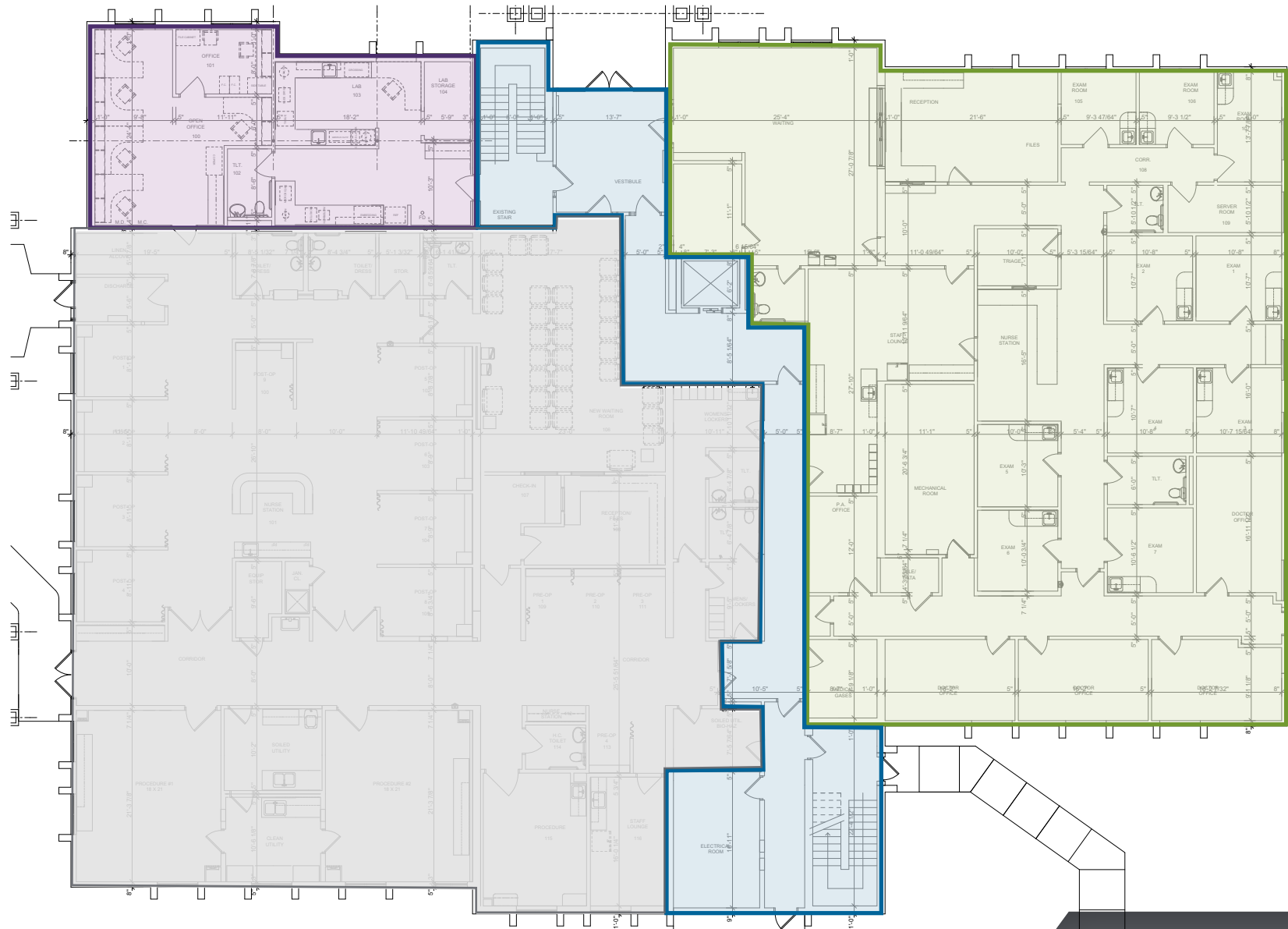
Suite 300

PHOTOS



570 White Pond Dr.
Akron, OH 44320

FLOOR PLAN



Suite 100

5,375 SF
Available

Suite 150

5,375 SF
LEASED

Suite 300

532 SF
Available

Common

570 White Pond Dr.
Akron, OH 44320

LOCATION



570 White Pond Dr.
Akron, OH 44320

1 MILE DEMOGRAPHICS

KEY FACTS

4,085

Population



1.8

Average
Household Size

44.8

Median Age

\$53,339

Median Household
Income

EDUCATION

3.8%

No High School
Diploma



23.1%
High School
Graduate



28.4%
Some College/
Associate's Degree



44.6%
Bachelor's/Grad/
Prof Degree

BUSINESS



196

Total Businesses



2,241

Total Employees

EMPLOYMENT



White Collar

70.6%



Blue Collar

10.9%



Services

18.5%

1.9%

Unemployment
Rate

INCOME



\$53,339

Median Household
Income



\$52,042

Per Capita Income



\$83,473

Median Net Worth

2025 Households by income (Esri)

The largest group: \$35,000 - \$49,999 (14.4%)

The smallest group: \$150,000 - \$199,999 (4.5%)

Indicator ▲	Value	Diff	
<\$15,000	13.9%	+5.7%	
\$15,000 - \$24,999	13.8%	+7.2%	
\$25,000 - \$34,999	6.2%	-2.2%	
\$35,000 - \$49,999	14.4%	+3.3%	
\$50,000 - \$74,999	11.7%	-5.4%	
\$75,000 - \$99,999	12.2%	+1.4%	
\$100,000 - \$149,999	10.3%	-6.6%	
\$150,000 - \$199,999	4.5%	-4.1%	
\$200,000+	13.0%	+0.7%	

Bars show deviation from Summit County

Stacy Tramonte
330 590 8248 • STramonte@pvccinc.com

Barbara Faciana
330 590 8230 • BFaciana@pvccinc.com

570 White Pond Dr.
Akron, OH 44320

3 MILE DEMOGRAPHICS

KEY FACTS

63,179

Population



2.1

Average
Household Size

43.0

Median Age

\$64,829

Median Household
Income

EDUCATION

5.0%

No High School
Diploma



25.6%
High School
Graduate



28.4%
Some College/
Associate's Degree



40.9%
Bachelor's/Grad/
Prof Degree

BUSINESS



2,241

Total Businesses



25,656

Total Employees

EMPLOYMENT



White Collar

65.4%



Blue Collar

16.4%



Services

18.1%



4.0%

Unemployment
Rate

INCOME



\$64,829

Median Household
Income



\$44,755

Per Capita Income



\$153,882

Median Net Worth

2025 Households by income (Esri)

The largest group: \$50,000 - \$74,999 (16.2%)

The smallest group: \$150,000 - \$199,999 (7.1%)

Indicator ▲	Value	Diff	
<\$15,000	12.3%	+4.1%	
\$15,000 - \$24,999	8.2%	+1.6%	
\$25,000 - \$34,999	9.2%	+0.8%	
\$35,000 - \$49,999	10.3%	-0.8%	
\$50,000 - \$74,999	16.2%	-0.9%	
\$75,000 - \$99,999	11.0%	+0.2%	
\$100,000 - \$149,999	15.8%	-1.1%	
\$150,000 - \$199,999	7.1%	-1.5%	
\$200,000+	10.0%	-2.3%	

Bars show deviation from Summit County

Stacy Tramonte
330 590 8248 • STramonte@pvccinc.com

Barbara Faciana
330 590 8230 • BFaciana@pvccinc.com

NAIPleasant Valley

6155 Rockside Road, Suite 304
Independence, Ohio 44131
216 831 3310
naipvc.com

570 White Pond Dr.
Akron, OH 44320

5 MILE DEMOGRAPHICS

KEY FACTS

150,619

Population



2.2

Average
Household Size

39.7

Median Age

\$59,683

Median Household
Income

EDUCATION

7.9%

No High School
Diploma



27.8%
High School
Graduate



28.1%
Some College/
Associate's Degree



36.2%
Bachelor's/Grad/
Prof Degree

BUSINESS



6,661

Total Businesses



107,800

Total Employees

EMPLOYMENT



White Collar

60.3%



Blue Collar

19.8%



Services

19.9%

5.2%

Unemployment
Rate

INCOME



\$59,683

Median Household
Income



\$40,879

Per Capita Income



\$109,307

Median Net Worth

2025 Households by income (Esri)

The largest group: \$50,000 - \$74,999 (16.6%)

The smallest group: \$150,000 - \$199,999 (6.5%)

Indicator ▲	Value	Diff	
<\$15,000	12.5%	+4.3%	
\$15,000 - \$24,999	8.1%	+1.5%	
\$25,000 - \$34,999	10.0%	+1.6%	
\$35,000 - \$49,999	12.5%	+1.4%	
\$50,000 - \$74,999	16.6%	-0.5%	
\$75,000 - \$99,999	10.2%	-0.6%	
\$100,000 - \$149,999	14.3%	-2.6%	
\$150,000 - \$199,999	6.5%	-2.1%	
\$200,000+	9.4%	-2.9%	

Bars show deviation from Summit County

Stacy Tramonte

330 590 8248 • STramonte@pvccinc.com

Barbara Faciana

330 590 8230 • BFaciana@pvccinc.com