



## AIRLINE COMMERCE CENTER 10057 E. AIRLINE HWY. SAINT ROSE, LOUISIANA

**135,000 TOTAL SQ. FT.  
8,500 SQ. FT. OFFICE AREA**

- **Industrial Type:** Cold Storage, Food Processing
- **Contiguous Area:** Multiple suites ranging from 40,000 to 135,000 sq. ft.
- **Loading:** 28 Docks, 29 Doors
- **11,250 sf covered abandoned rail spur to the KCS RR**

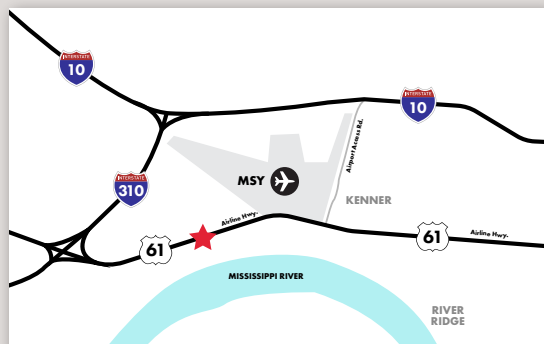
Former Schwegmann's Grocery cold storage facility. Based on available information, facility was designed to offer the following areas: High Rise Freezer (-5 degrees F) - approx. 19,000 sf, Bulk Freezer (-5 degrees F) - approx. 36,000 sf, Ice Cream Freezer (-25 degrees F) - approx. 2,000 sf, Bulk Cooler (28 degrees F) - approx. 34,000 sf, and Dock Space (40 degrees F) - 44,000 sf. Eave heights range from 23 to 27 feet in most areas but peak at 55 feet in the High Rise Cold Storage section.



**CLICK HERE**  
to view building specs

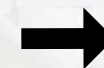


**CLICK HERE**  
to view interactive map



Click or tap the **360°** icon to view the location in 360°.

**1 mile**



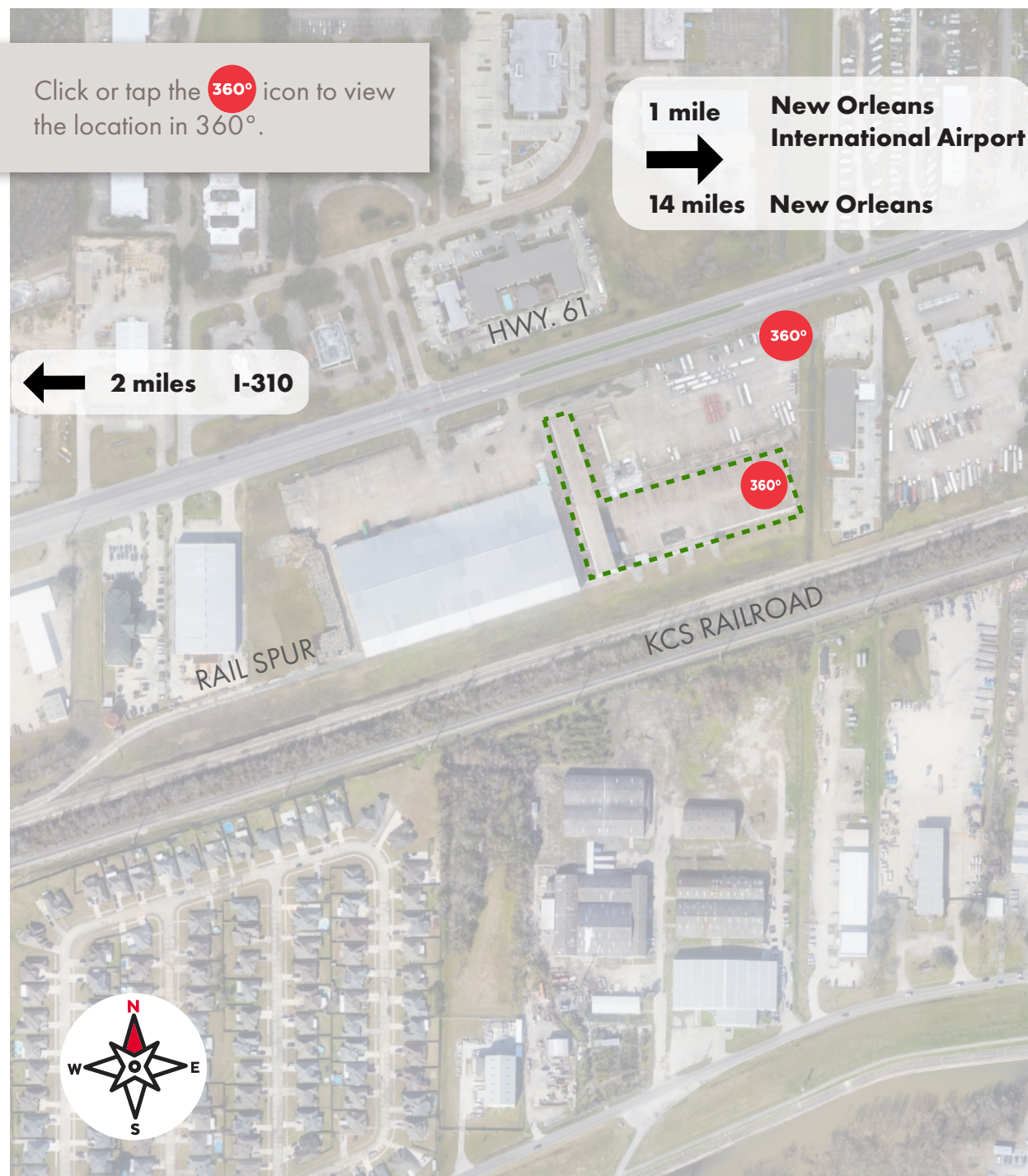
**New Orleans  
International Airport**

**14 miles**

**New Orleans**



**2 miles I-310**





## AIRLINE COMMERCE CENTER 10057 E. AIRLINE HWY. SAINT ROSE, LOUISIANA

**135,000 TOTAL SQ. FT.**  
**8,500 SQ. FT. OF OFFICE AREA**

- ▶ **Industrial Type:** Cold Storage, Food Processing
- ▶ **Contiguous Area:** Multiple suites ranging from 40,000 to 135,000 sq. ft.
- ▶ **Loading:** 28 Docks, 29 Doors
- ▶ **11,250 sf covered abandoned rail spur to the KCS RR**

### CHARLES M MULLIN

RE/MAX Commercial Brokers Inc.  
cmullin@nolacommercial.com

📞 504.838.00010 (office)  
📞 504-400-3254 (cell)

### COREY FAUCHEUX

St. Charles Parish Department of  
Economic Development and Tourism

✉ cfauchoux@stcharlesgov.net  
📞 985.783.5140 (office)

### ANA GALE ORELLANA

Project Manager, Entergy Business  
Development: Louisiana

✉ agale@entergy.com  
📞 504.840.2617 (office)  
📞 504.400.5968 (cell)

Click or tap the **360°** icon to view  
the location in 360°.

