



# 1916 & 1924 Yajome St – For Lease

NAPA, CA 94559

**PATRICK GLEESON**

SENIOR MANAGING DIRECTOR | CALDRE #01212486

707.235.5766

PGLEESON@WREALESTATE.NET



# Property Summary

1916 & 1924 YAJOME ST | NAPA



## Property Description

This property encompasses 6,782 square feet of mixed-use industrial, retail, and office space. Located near downtown Napa, it supports a variety of business operations. The property is zoned Light Industrial (IL), which allows for small-scale manufacturing, fabrication, packaging, storage, equipment repair, wholesale establishments, and other related uses. Additionally, the zoning includes provisions for construction and maintenance yards, trade and technical training facilities, utility plants, recycling centers, and similar facilities.

## OFFERING SUMMARY

Lease Rate:	\$2.25 SF/month (NNN)
Available SF:	6,782 SF
Space Available	January 2026

## Property Highlights

- **6,782± SF of Flexible Space** – Mixed-use industrial, retail, and office space adaptable to a wide range of business operations.
- **Light Industrial (IL) Zoning** – Permits small-scale manufacturing, fabrication, packaging, storage, equipment repair, wholesale, and more.
- **Prime Napa Location** – Centrally positioned near downtown Napa at the corner of Jackson Street and Yajome Street.
- **High Visibility** – Excellent exposure in a busy traffic corridor ideal for branding and customer access.
- **Operational Efficiency** – Opportunity to consolidate multiple business functions—office, retail, and production—under one roof.
- **Growth-Oriented** – Perfect for scaling production teams, expanding operations, and boosting business visibility.

# Site Plans

1916 & 1924 YAJOME ST | NAPA

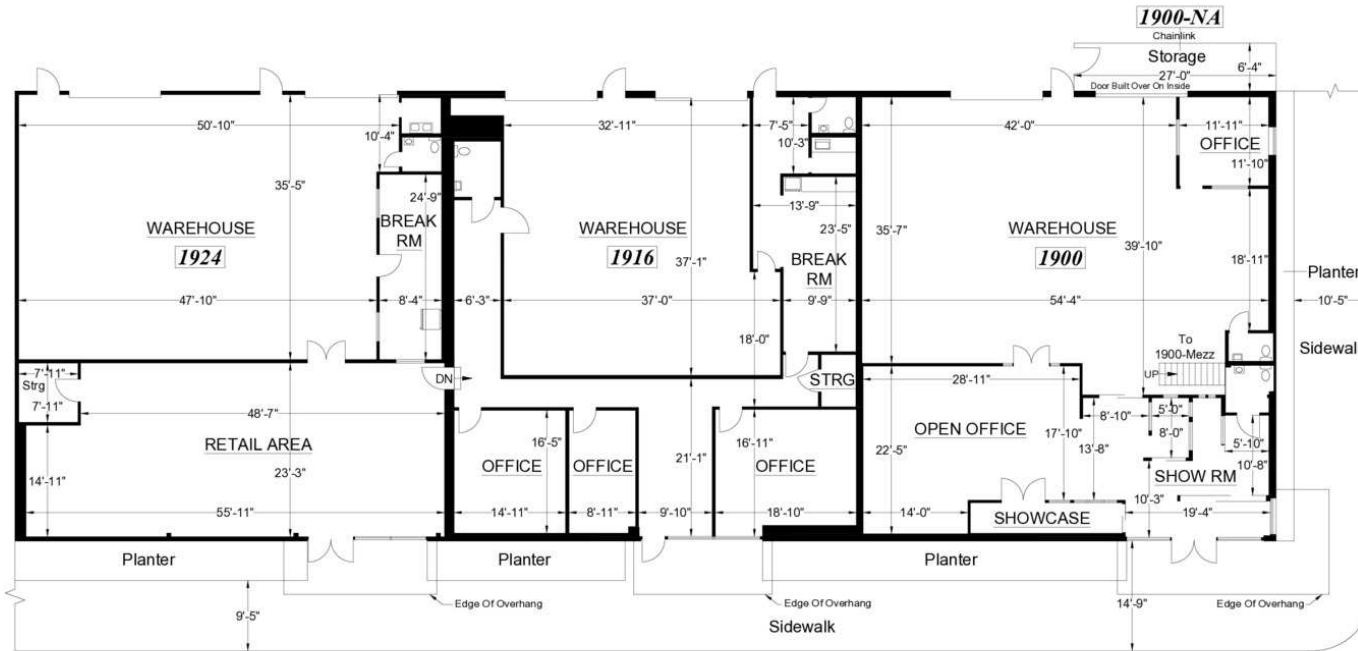
## PREPARED FOR:

CDG, Inc.  
516 Gibson Drive, Suite 270  
Roseville, CA 95678  
Tel (916) 781-6543

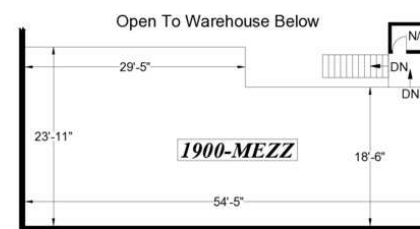
**1900 YAJOME STREET  
NAPA, CA**

(As Measured: August 2025)

## FLOOR PLAN



JACKSON ST



SCALE: 1/16" = 1' -0

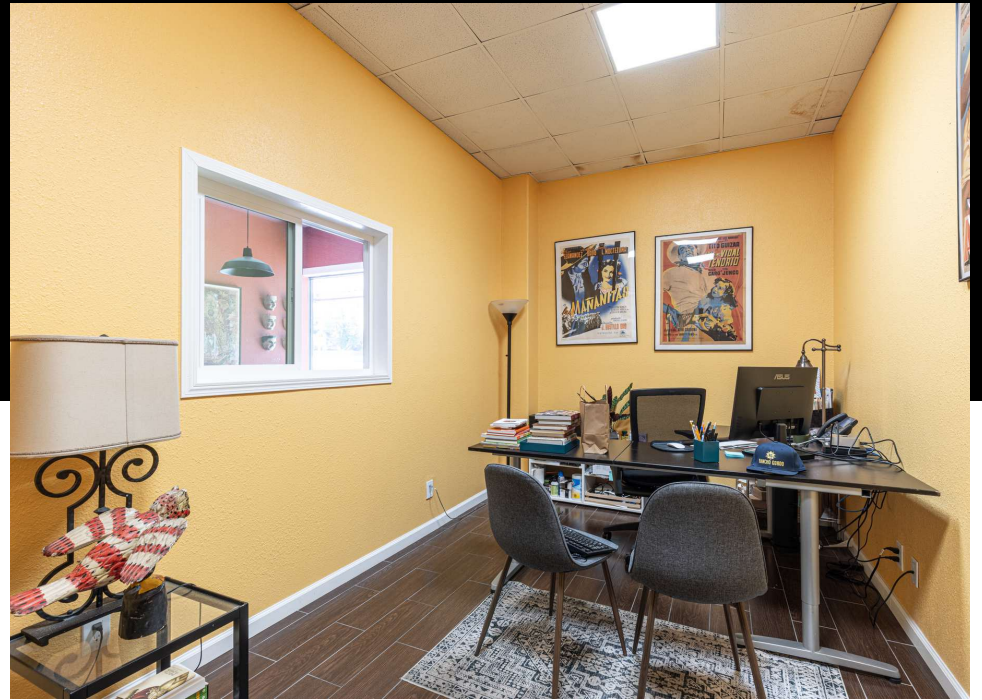


Building Billing Summary	SQ.FT.	%
*Measured Built-out Area	5,302	46%
Measured Mezzanine Area	1,000	19%

Note: All dimensions shown are rounded to the











## About W Commercial

W Commercial is a full-service real estate brokerage founded in Northern California. We've built a solid reputation of excellent customer service, attention to detail, and results. We provide unparalleled service and expertise that will exceed your expectations. Through advertising locally, statewide, nationwide, and around the world, we ensure your property receives maximum exposure.

Our team of knowledgeable agents and marketing specialists work together to produce exceptional results. We do our research, know what drives sales, and are always ahead of the curve on industry trends, consistently selling in all sectors of real estate at or above the asking price.

500 BICENTENNIAL WAY, SUITE 310  
SANTA ROSA, CA 95403

PHONE: 707.591.0570  
WCOMMERCIALRE.COM





# About Napa

Napa, California is a vibrant city at the heart of Napa Valley, one of the world’s most renowned wine regions. Known for its award-winning wineries, Michelin-starred restaurants, and thriving arts and culture scene, Napa blends small-town charm with a dynamic, modern lifestyle. Its revitalized downtown features boutique shopping, gourmet dining, tasting rooms, and the scenic Napa Riverfront. Outdoor enthusiasts enjoy nearby hiking, biking, and hot air ballooning, while music and food lovers flock to events like BottleRock Napa Valley. Conveniently located less than an hour from San Francisco and Sacramento, Napa offers both a celebrated destination for visitors and a highly desirable community for residents and businesses alike.

POPULATION	5 MILES	10 MILES	15 MILES
Total Population	85,845	131,334	351,005
Average Age	43	44	42
Average Age (Male)	42	42	41
Average Age (Female)	44	45	43

HOUSEHOLDS & INCOME	5 MILES	10 MILES	15 MILES
Total Households	32,018	46,869	123,514
# of Persons per HH	2.7	2.8	2.8
Average HH Income	\$141,583	\$148,824	\$134,024
Average House Value	\$940,784	\$924,551	\$769,090



**PATRICK GLEESON**  
SENIOR MANAGING DIRECTOR | CALDRE #01212486  
707.235.5766 | PGLEESON@WREALESTATE.NET  
WCOMMERCIALRE.COM

## DISCLAIMER

This property is being offered on an as-is basis. While the Broker believes the information in this brochure to be accurate, no warranty or representation is made as to its accuracy or completeness. Interested parties should conduct independent investigations and reach conclusions without reliance on materials contained in this brochure.

This property owner requests that you do not disturb the Tenants, as the property will only be shown in coordination with the Listing Agent.

This brochure is presented under the terms and conditions of the Confidentiality Agreement. As such, the material contained in this brochure is confidential and is provided solely for the purpose of considering the purchase of the property described herein. Offers should be presented to the agent for the property owner. Prospective buyers are encouraged to provide the buyer's background, source of funds, and any other information that would indicate their ability to complete the transaction smoothly.