



**Investors**  
REAL ESTATE PARTNERS

# FOR LEASE

112-114 Market Street SE, Roanoke, VA

INVESTORS REAL ESTATE PARTNERS | INVESTORSREP.COM



**Investors**  
REAL ESTATE PARTNERS

**BRYAN MUSELWHITE, CCIM, SIOR**  
SENIOR VICE PRESIDENT  
540.314.7796  
BRYAN@INVESTORSREP.COM

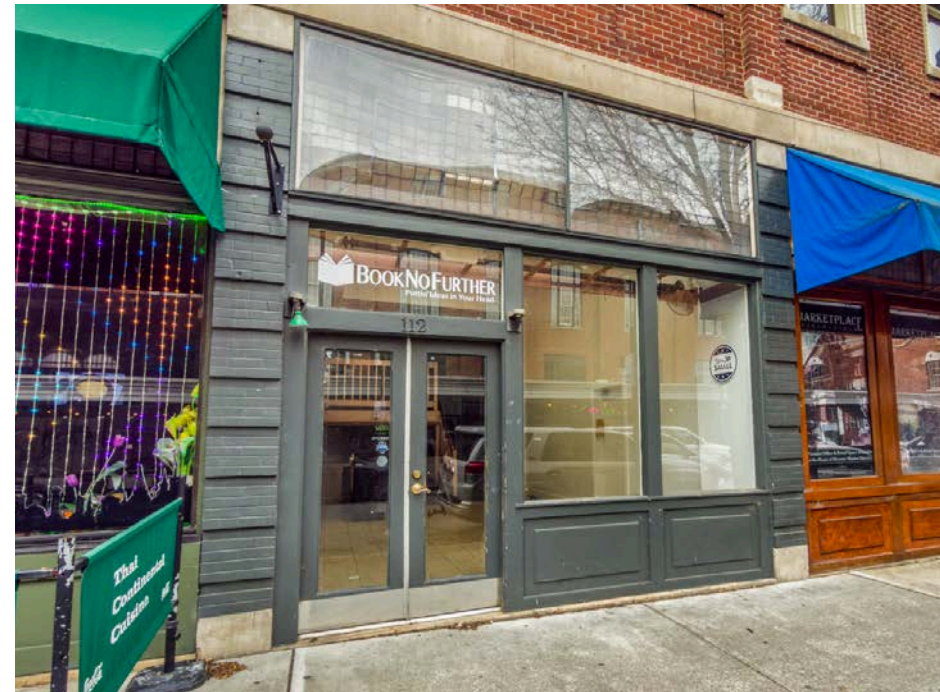
# OFFERING SUMMARY

## 112-114 MARKET STREET SE, ROANOKE, VA - SUITE 112

<b>Lease Rate:</b>	\$20
<b>Lease Type:</b>	NNN
<b>Square Feet:</b>	±1,196
<b>Zoning:</b>	D

## SPACE SUMMARY

Suite 112 consists of approximately 1,196 square feet of first-level commercial space with a private side entrance. The space features an open ground-level area with tile flooring and a mezzanine level accessed by an interior stairway. The mezzanine provides additional usable space overlooking the main level. The suite is suitable for retail, studio, or office use and offers a downtown location with street presence and pedestrian access.



# SUITE 112 PHOTOS



INVESTORS REAL ESTATE PARTNERS | INVESTORSREP.COM



**Investors**  
REAL ESTATE PARTNERS

**BRYAN MUSSELWHITE, CCIM, SIOR**  
SENIOR VICE PRESIDENT  
540.314.7796  
BRYAN@INVESTORSREP.COM