

For Lease  
**Restaurant**  
1,534 SF

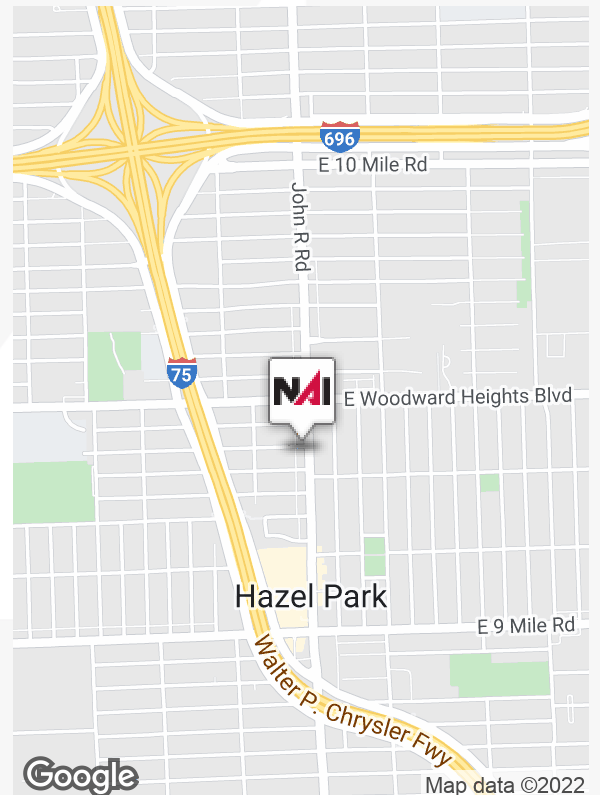


## 23725 John R

Hazel Park, Michigan 48030

### Property Highlights

- Great Restaurant Space
- Fantastic Opportunity In the Heart of the Successful Hazel Park Culinary District
- Across From a New Four Story Mixed Use Development to Start Late Summer 2023
- 1,534 SF Available For Lease, with an Additional 1,500 SF Patio or Building Addition Possible
- Steps Away from Popular Mabel Gray and FRAME Bar @ joebar
- 24 Exclusive Onsite Parking Spots
- Lease Rate: \$3,950 Per Month plus NNN



For more information

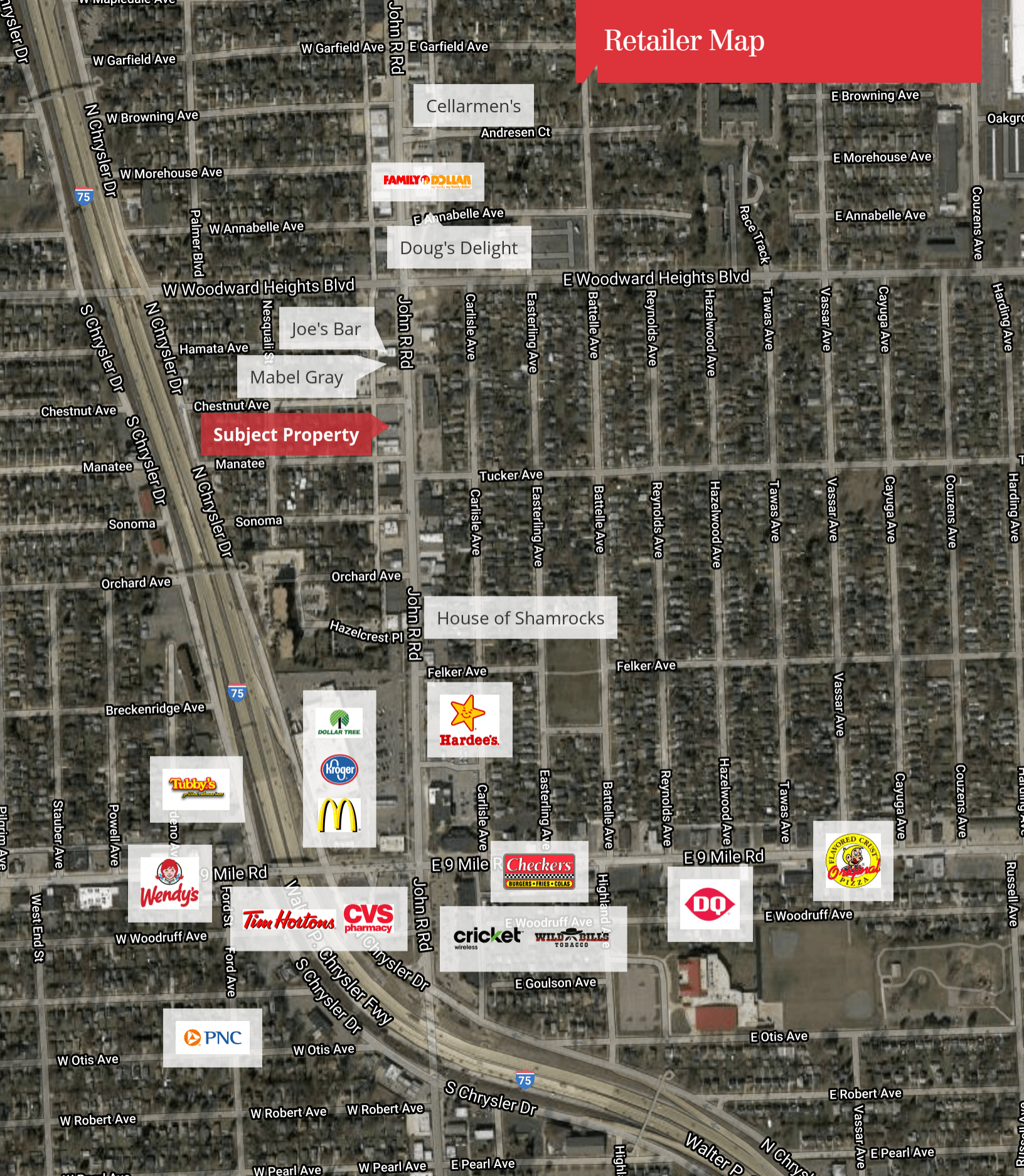
**Rick Ax**

O: 248 351 6319  
ax@farbman.com

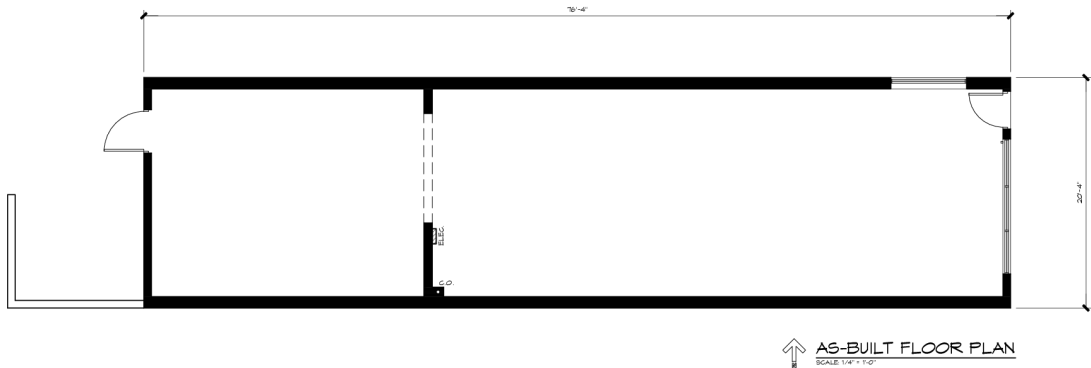
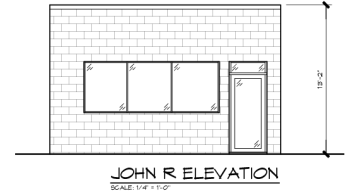
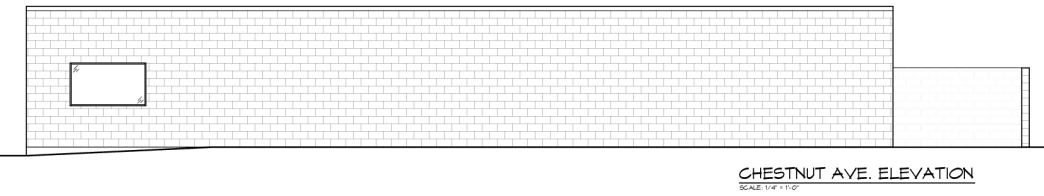
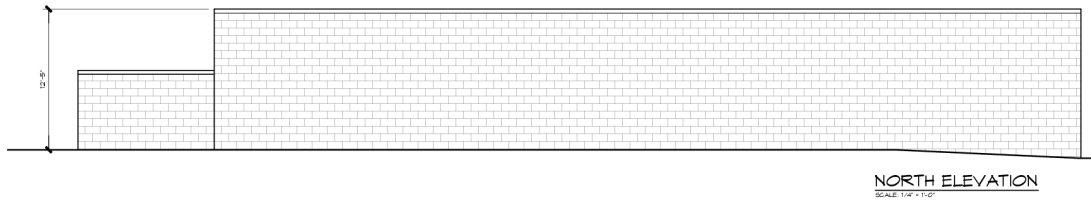
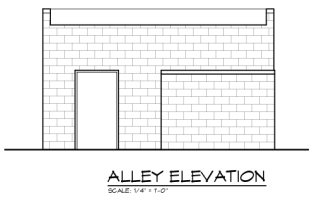
# Additional Photos



# Retailer Map



Map data ©2021 Imagery ©2021, CNES / Airbus, Maxar Technologies, Sanborn, U.S. Geological Survey, USDA Farm Service Agency



PRELIMINARY	01/08/2020
CONCEPT	
DESIGN	
PERMIT	
CONSTRUCTION	
ISSUANCE	01/08/2020

**DESIGN STRUCTURE**  
DESIGN • CONSTRUCTION • MANAGEMENT  
23125 JOHN R RD, SUITE 100  
HAZEL PARK, MICHIGAN 48030  
(248) 354-7100

**MCCANN**  
D U M M O N T  
ARCHITECTS P L L C  
23125 JOHN R RD, SUITE 100  
HAZEL PARK, MICHIGAN 48030  
(248) 354-7100

PROJECT LOCATION  
**2 GUYS FROM ITALY**  
23125 JOHN R RD,  
HAZEL PARK, MI 48030

DRAWING TITLE  
AS-BUILT FLOOR PLAN

DRAWN: RZ  
CHECKED: SCD/JPM  
APPROVED: SCD/JPM

DO NOT SCALE THIS PRINT  
USE FIGURED DIMENSIONS ONLY

PROJECT NUMBER: D60/2115  
SHEET NUMBER: AB-1