

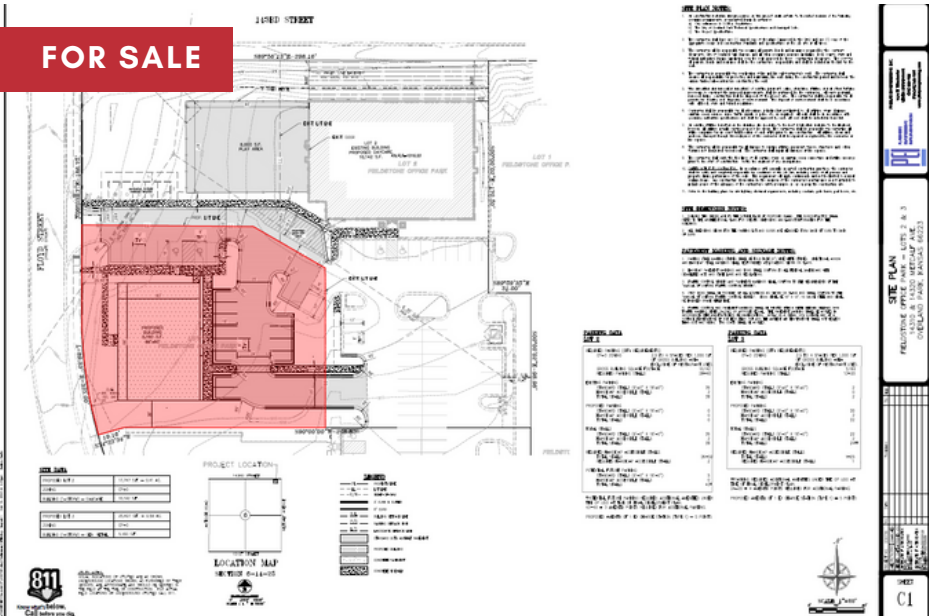
14320 METCALF, OVERLAND PARK, KS 66223



RECE
COMMERCIAL REAL ESTATE

a Berkshire Hathaway Affiliate

FOR SALE



JIM THOME

913.548.8700



JTHOME@REECECOMMERCIAL.COM

\$12/PSF

- CP-O ZONED LAND
- 25,466.55 SQFT (.58 ACRES)
- ALL UTILITIES TO SITE
- CAN BUILD UP TO 5,000 SQFT BUILDING

The information above has been obtained from sources believed reliable. While we do not doubt its accuracy we have not verified it and make no guarantee, warranty or representation about it. It is your responsibility to independently confirm its accuracy and completeness. Any projections, opinions, assumptions, or estimates used are for example only and do not represent the current or future performance of the property. You and your advisors should conduct a careful, independent investigation of the property to determine to your satisfaction the suitability of the property for your needs. © 2020

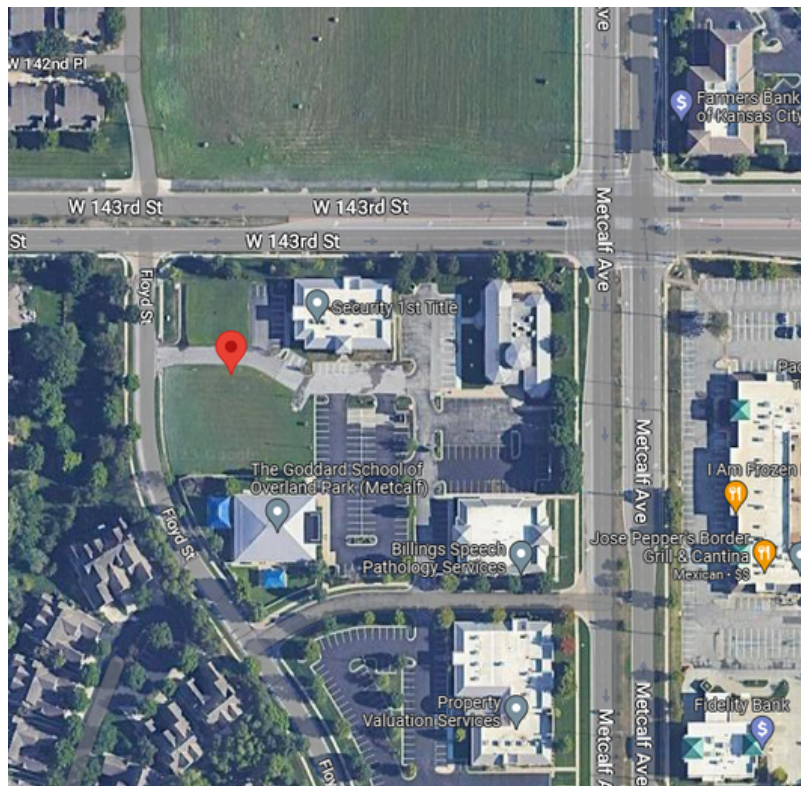
14320 METCALF

OVERLAND PARK, KS 66223



REECE
COMMERCIAL REAL ESTATE

a Berkshire Hathaway Affiliate



**JIM
THOME**



913.548.8700



JTHOME@REECECOMMERCIAL.COM

The information above has been obtained from sources believed reliable. While we do not doubt its accuracy we have not verified it and make no guarantee, warranty or representation about it. It is your responsibility to independently confirm its accuracy and completeness. Any projections, opinions, assumptions, or estimates used are for example only and do not represent the current or future performance of the property. You and your advisors should conduct a careful, independent investigation of the property to determine to your satisfaction the suitability of the property for your needs. © 2020