

Prime Space at Luxury Marina





ASSET OVERVIEW



The Las Olas Marina developed by Suntex Marinas will be an iconic destination. The design of the Marina and uplands feature a waterfront, tree-lined promenade with public access, boat slips to accommodate mega yachts, dockage and boater services facilities in a world-class marina, signature fine dining restaurants, boutique retail tenants, state-of-the-art infrastructure improvements, and lush pedestrian-friendly landscape.

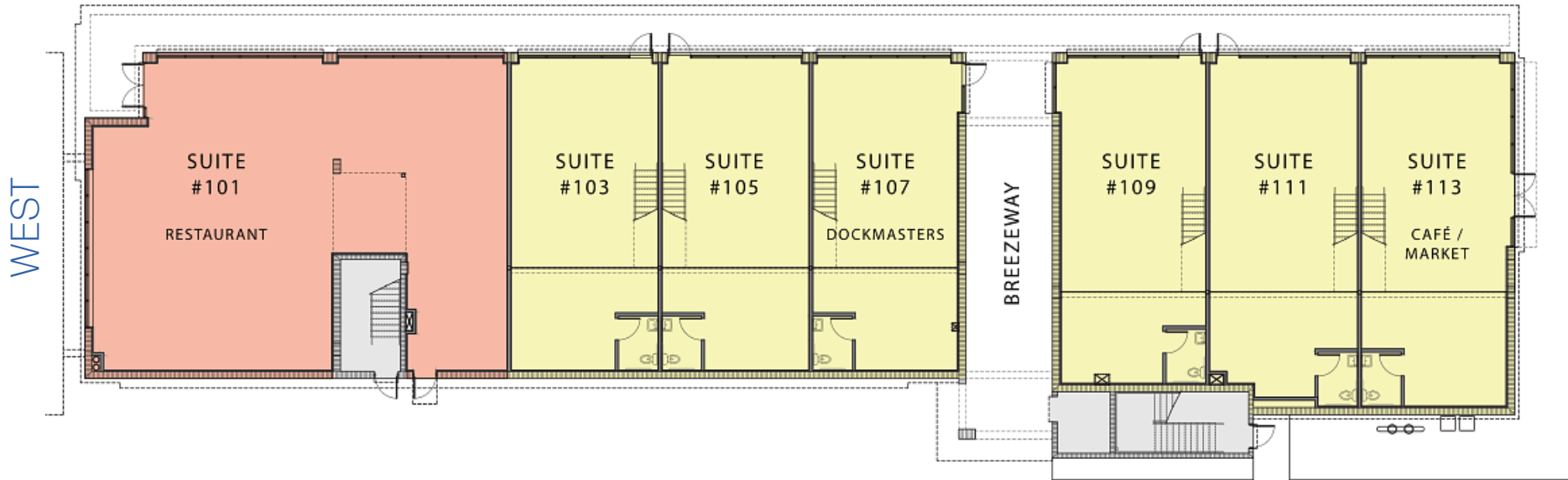
In partnership with the City of Fort Lauderdale, the Las Olas Marina will be the capstone of the +\$130 million in public amenity improvements along the Las Olas Corridor connecting pedestrians to the ocean.



FEATURES

- Office suites available
- Retail Suites available
- Mega yacht marina
- Luxury amenities
- 66 boat slips
- Join nationally acclaimed Cameron Mitchell's Ocean Prime
- Waterfront promenade
- Critical component of Fort Lauderdale Boat Show
- Incredible signage opportunities

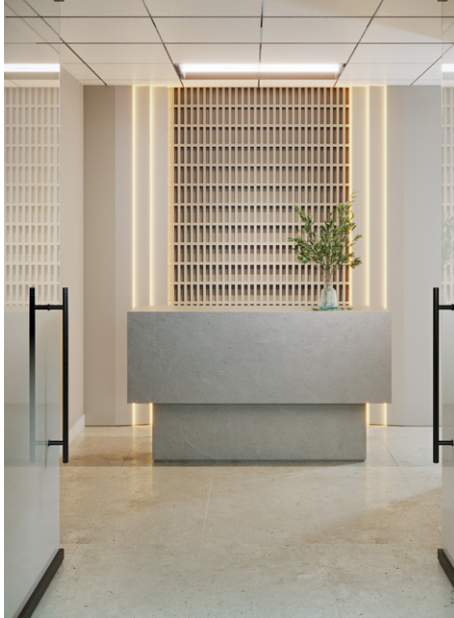
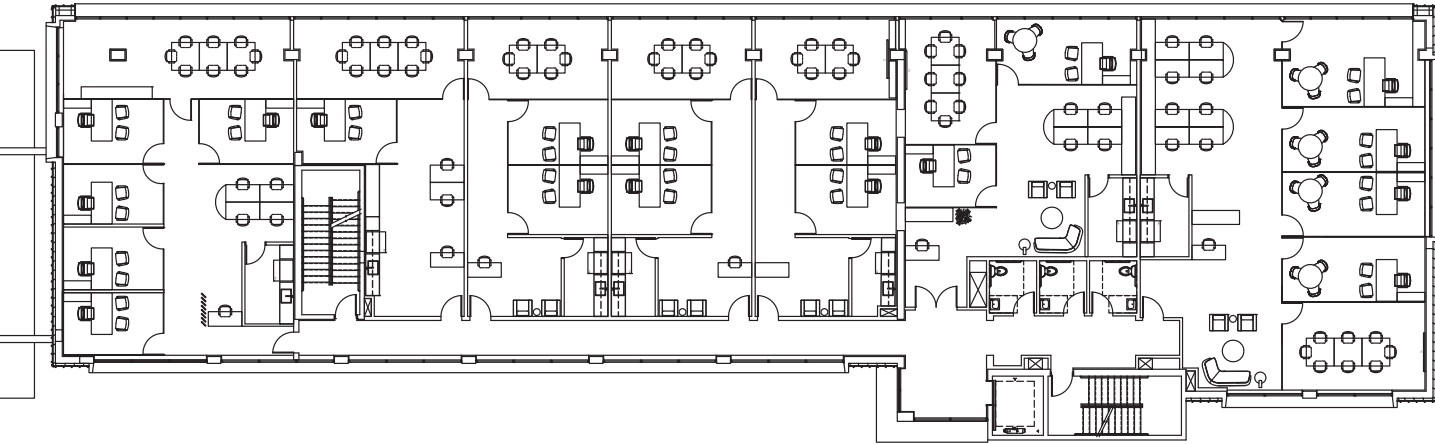
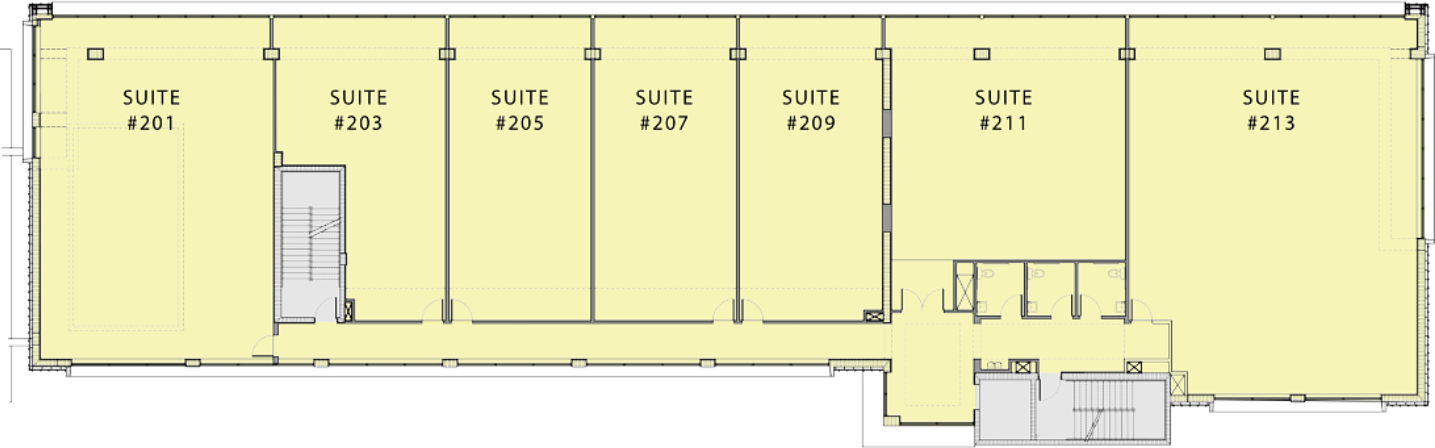
FIRST FLOOR RETAIL PLAN



SUITE NUMBER	APPROX. RSF
101	3,084
103	1,608
105	1,608
107	1,608
109	1,602
111	1,720
113	1,753

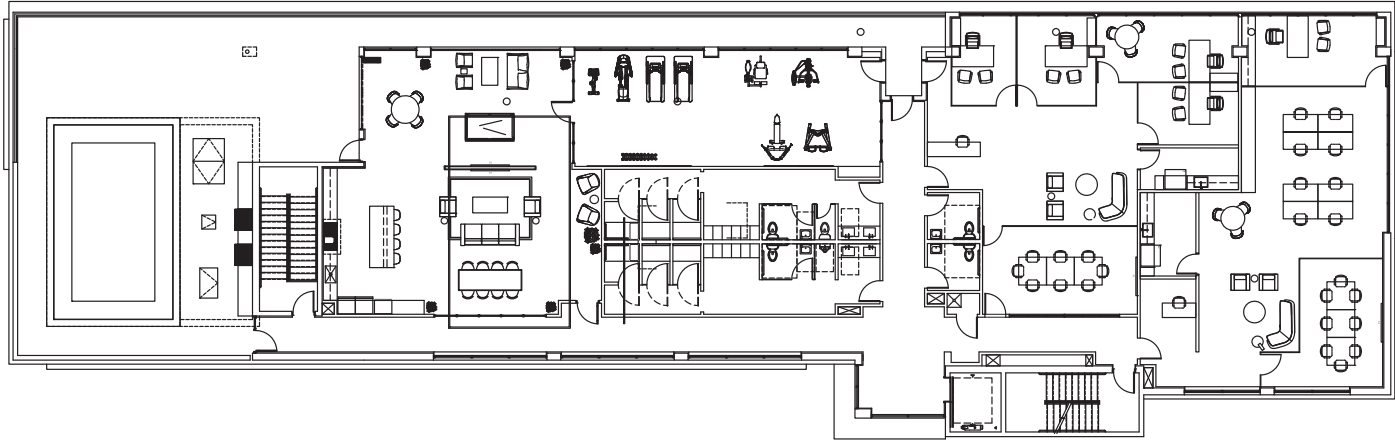
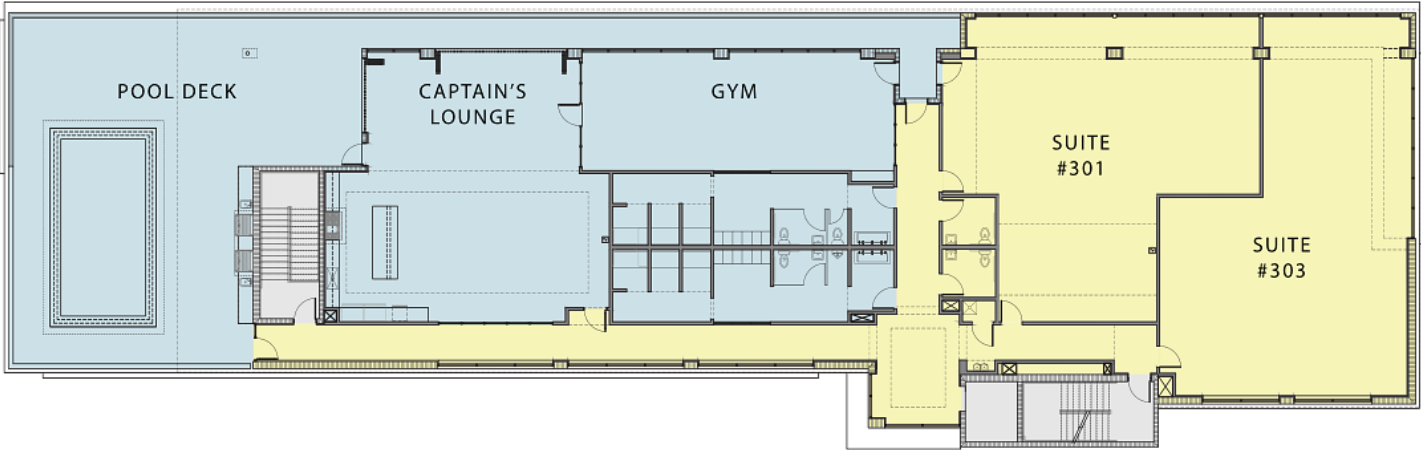


SECOND FLOOR OFFICE PLAN



SUITE NUMBER	APPROX. RSF
201	2,185
203	1,056
205	1,123
207	1,123
209	1,122
211	1,491
213	2,857

THIRD FLOOR OFFICE PLAN



SUITE NUMBER	APPROX. RSF
301	1,911
303	1,927



COFFEE SHOP

DOCKMASTER

AROMA

STONE

SEAFOOD PLACE

LEASING TEAM



KIMBERLY BARBAR Senior Vice President, Stiles

Kimberly Barbar is a Senior Vice President of Stiles. Since joining Stiles in 2007, Ms. Barbar has advised corporate clients on relocations, family offices on investment opportunities, site selection for Fortune 100 companies, development clients on off-market acquisition opportunities and assemblages, and identified suitable leasing options for local, national and multi-national companies. She has represented clients on acquisitions, dispositions, financing, development and construction; sales and leasing of commercial sites, shopping centers and out parcel development; properties acquired from governmental entities for private development; and conversions of residential apartments into commercial condominium projects.

Prior to joining Stiles, Ms. Barbar practiced for nearly 20 years as a business lawyer with broad experience in commercial real estate and corporate transactions, counseling clients over the years on complex business and legal issues.

Throughout her career, Ms. Barbar has represented such clients as:

BB&T	Lend Lease Corporation
BankAtlantic	Lennar
BBX Capital	Nipro Diagnostics
Benihana	Office Depot
CDB Aviation Americas	Rossmeyer's Harley Davidson
ChildNet	Scott Paper Company
Cleveland Clinic Florida	Sunbeam Corporation
Columbia HCA	Sun Trust Bank
Eckerd Corporation (now Rite Aid)	TIAA/CREF
General Electric Capital Aviation Services	Toll Brothers, Inc.
Hyatt Corporation	Walgreens

Ms. Barbar also has represented lenders in commercial aircraft transactions, including domestic and cross-border aircraft and aircraft engine operating leases, lease restructuring and aircraft finance leasing through her relationship with General Electric Capital Aviation Services (GECAS), working full-time in GECAS's offices "hands on" in GECAS's commercial aircraft financing business.

Education

Juris Doctor from University of Miami School of Law

Bachelor's Degree in Psychology and Political Science from Auburn University

Associations

Florida Bar (Real Property, Probate and Trust Law Section)

Phi Alpha Delta Law Fraternity

Past President and current Member of the Board of Directors of the University of Miami Miller School of Medicine Women's Health Forum

Past President Junior Welfare Society

Ambassador for The Pantry of Broward County, Florida



Offered By

Kimberly Barbar
Senior Vice President
Stiles
Tel. 954-918-7716
kimberly.barbar@stiles.com