

FOR LEASE PAGEANTRY WEST

8925 & 8945 WEST RUSSELL ROAD, LAS VEGAS, NV 89148

±105,853 SF CLASS A OFFICE

BARTON HYDE
702 475 7546
barton.hyde@avisonyoung.com
NV Lic #: S.41080

DOMINICK FLORATOS
702 904 3442
dominick.floratos@avisonyoung.com
NV Lic #: S.204334

**AVISON
YOUNG**

10845 Griffith Peak Drive, Suite 100 • Las Vegas, NV 89135 • 702.472.7979 www.avisonyoung.com

The information contained herein was obtained from sources deemed reliable; however, Avison Young makes no guarantees or representations as to the accuracy thereof. The presentation of this property is submitted subject to errors, changes of price or conditions prior to sale or lease, or withdrawal of notice.



Pageantry West consists of two Class A office buildings located at 215 & Russell. Its central location between Summerlin and Green Valley, excellent visibility from the 215 and quick freeway access make this an ideal and in-demand office park in a thriving area.

Property highlights

- 105,853 sf Class A office park in booming Southwest Las Vegas
- Three-story building (63,433 sf) and two-story building (42,420 sf) with grand entries
- Prominent visibility and clear signage from 215 Beltway
- 10 minute drive to new Raiders Stadium & Harry Reid International Airport
- Desirable midway location between Summerlin and Green Valley

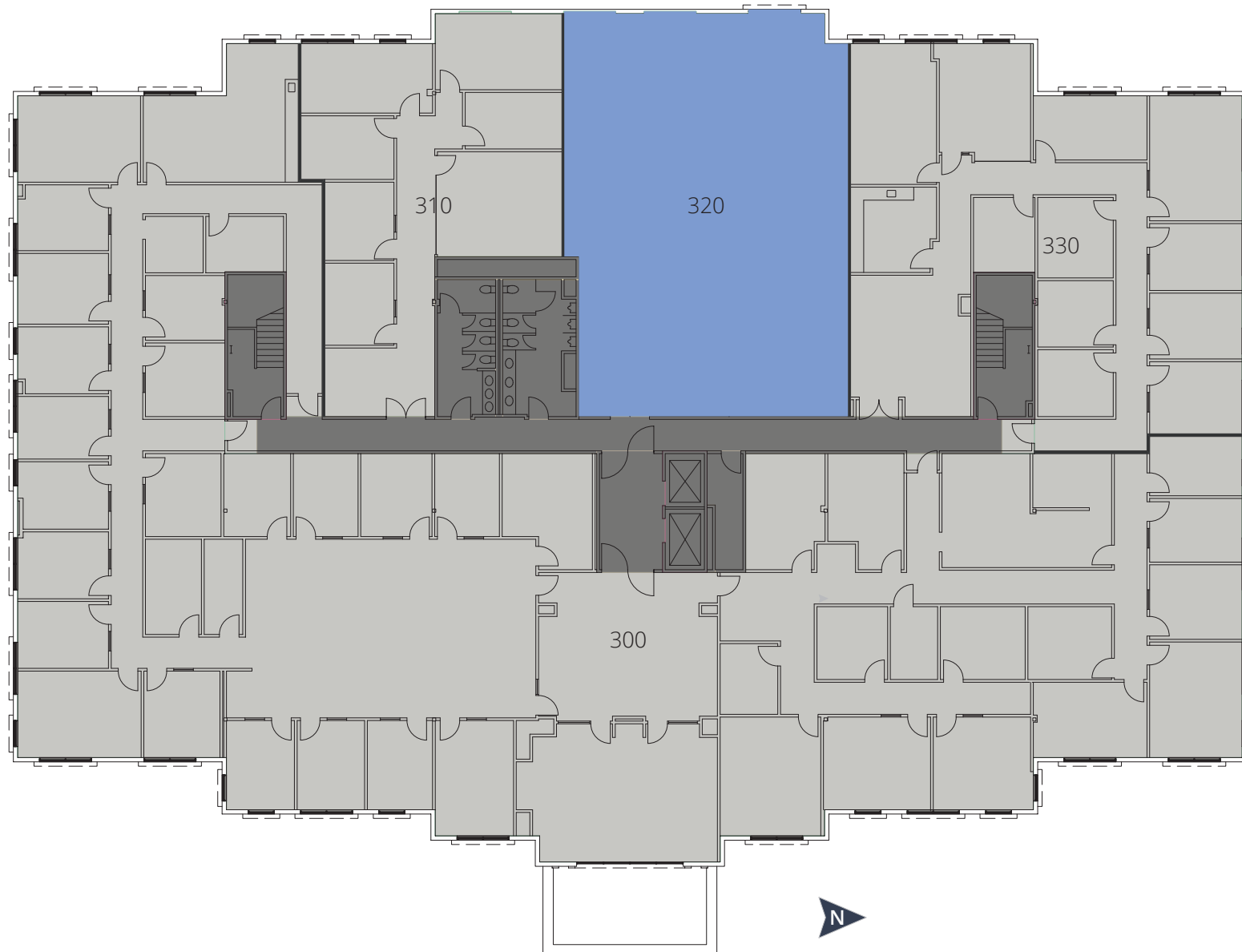
Lease rate: \$2.80 - \$2.85/sf MG

FOR LEASE

PAGEANTRY WEST

8925 & 8945 WEST RUSSELL ROAD, LAS VEGAS, NV 89148

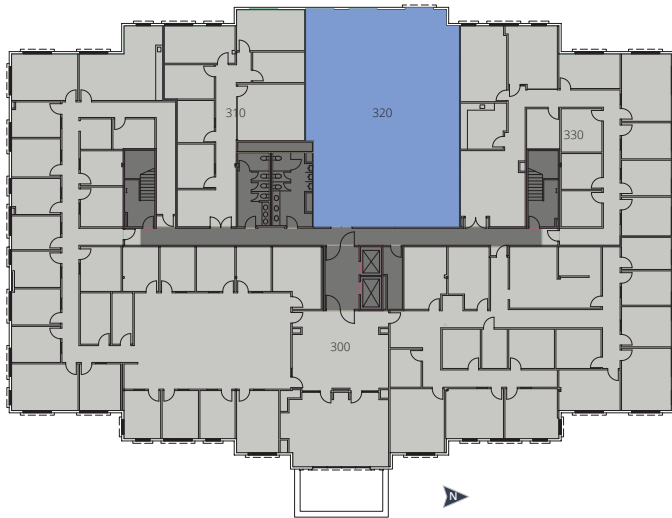
8945 // THIRD FLOOR



FOR LEASE

PAGEANTRY WEST

8925 & 8945 WEST RUSSELL ROAD, LAS VEGAS, NV 89148

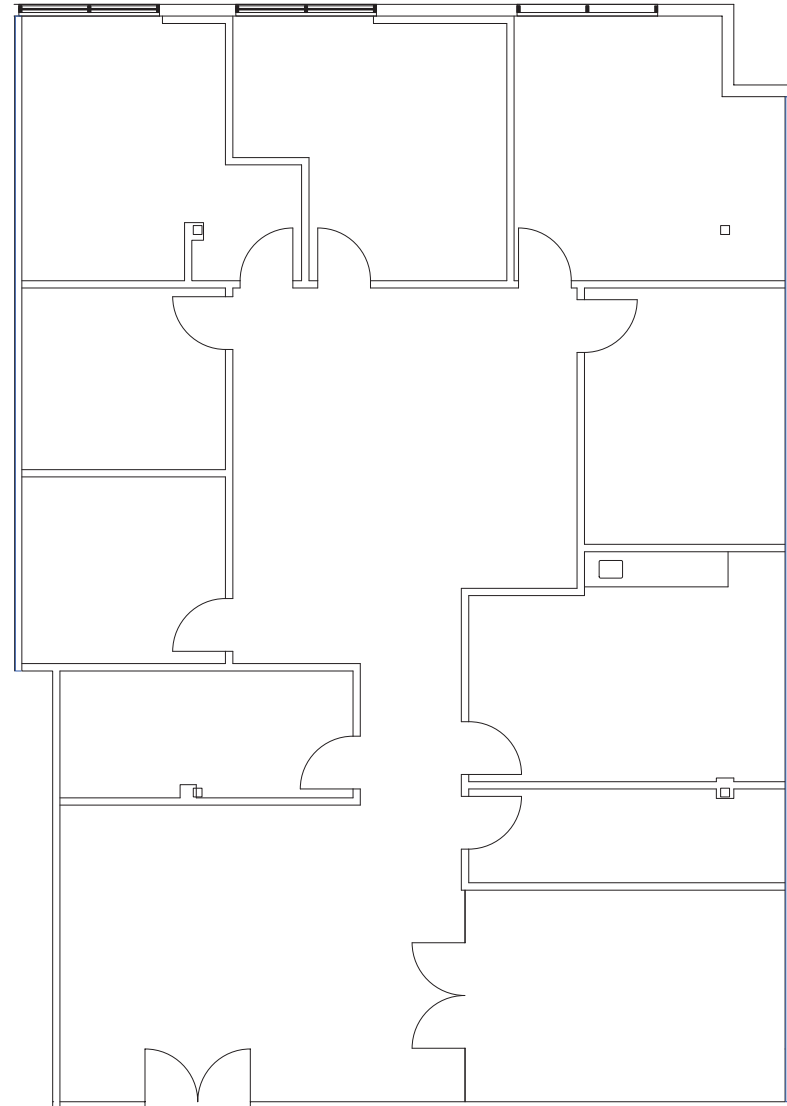


8945 // SUITE 320

3,039 rsf / 2,613 usf

Lease rate: \$2.80/sf MG

Available 5/1/2026







AVISON YOUNG
 10845 Griffith Peak Drive, Suite 100
 Las Vegas, NV 89135
 O 702.472.7979 F 702.475.7545

BARTON HYDE
 702.475.7546
 barton.hyde@avisonyoung.com
 NV Lic # S.41080

DOMINICK FLORATOS
 702 904 3442
 dominick.floratos@avisonyoung.com
 NV Lic #: S.204334