



## PROPERTY DESCRIPTION & AMENITIES

- Outstanding Industry Location
- High Image Industrial/R&D Space
- Excellent Feng Shui
- Access to (60) Freeway
- (60) Freeway Signage Available
- Gale Avenue Frontage
- Close Proximity to Many Retail Amenities
- Professionally Managed

## AVAILABILITY

UNIT ADDRESS	SIZE	OFFICE	ASKING RATE	AVAILABLE
1301 John Reed Court	6,200 SF	2,331 SF	\$1.25 psf	Now
1218 John Reed Court	5,500 SF	4,442 SF	\$1.29 psf	Now

FOR FURTHER INFORMATION, PLEASE CONTACT:

CHRIS TOLLES  
(213) 955-5129  
christopher.tolles@cushwake.com  
Lic. #01459899

ROBIN DODSON  
(213) 955-6460  
robin.dodson@cushwake.com  
Lic. #00956329

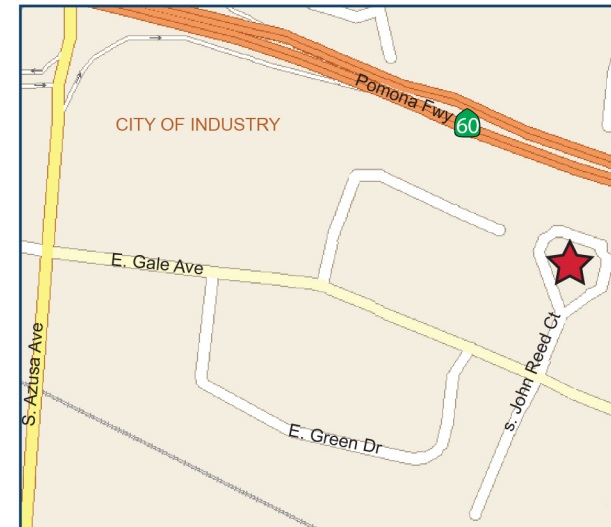
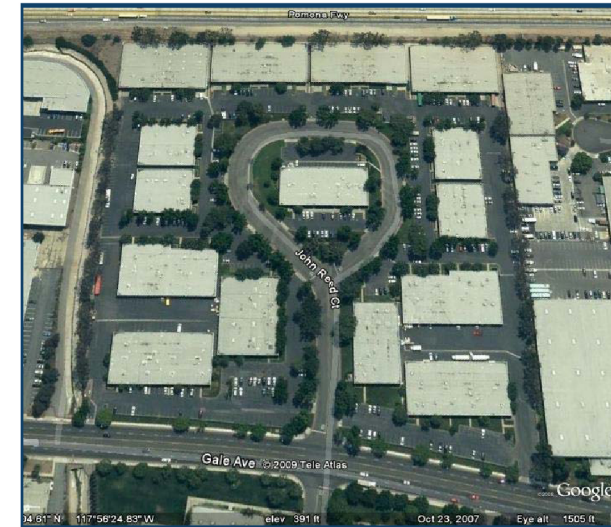
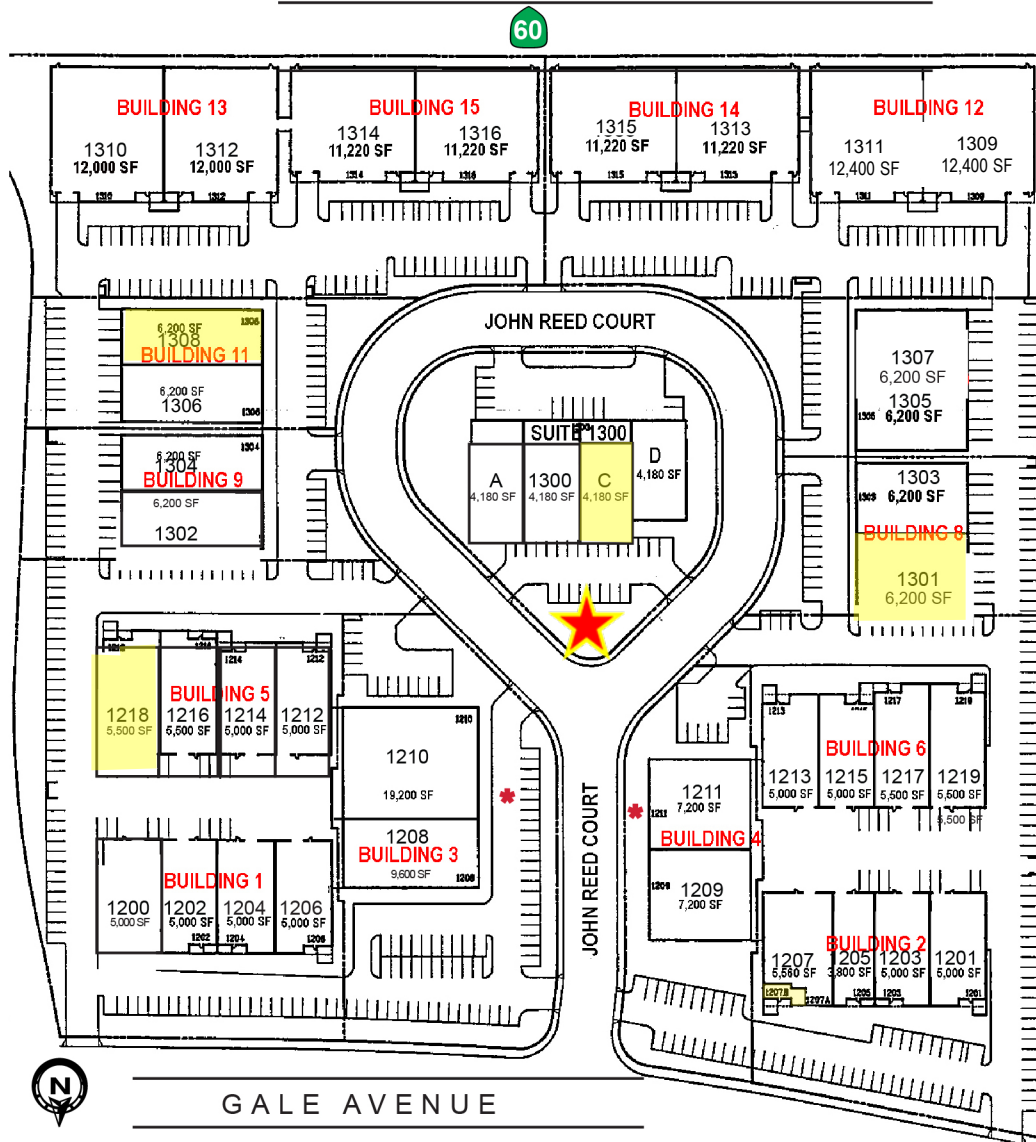
ERIK LARSON  
(213) 955-5126  
erik.larson@cushwake.com  
Lic. #01213790

900 Wilshire Blvd., 24<sup>th</sup> Floor  
Los Angeles, CA 90017  
www.cushwake.com  
Lic#: 00616335



# INDUSTRIAL SPACE FOR LEASE

# John Reed Commerce Center



FOR FURTHER INFORMATION, PLEASE CONTACT:

CHRIS TOLLES  
(213) 955-5129  
christopher.tolles@cushwake.com  
Lic. #01459899

ROBIN DODSON  
(213) 955-6460  
robin.dodson@cushwake.com  
Lic. #00956329

ERIK LARSON  
(213) 955-5126  
erik.larson@cushwake.com  
Lic. #01213790

900 Wilshire Blvd., 24<sup>th</sup> Floor  
Los Angeles, CA 90017  
www.cushwake.com  
Lic#: 00616335



The depiction in the included photograph of any person, entity, sign, logo or property, other than Cushman & Wakefield's (C&W) client and the property offered by C&W, is incidental only, and is not intended to connote any affiliation, connection, association, sponsorship or approval by or between that which is incidentally depicted and C&W or its client. This listing shall not be deemed an offer to lease, sublease or sell such property; and, in the event of any transaction for such property, no commission shall be earned by or payable to any cooperating broker except if otherwise provided pursuant to the express terms, rates and conditions of C&W's agreement with its principal, if, as and when such commission (if any) is actually received from such principal. (A copy of the rates and conditions referred to above with respect to this property is available upon request.)