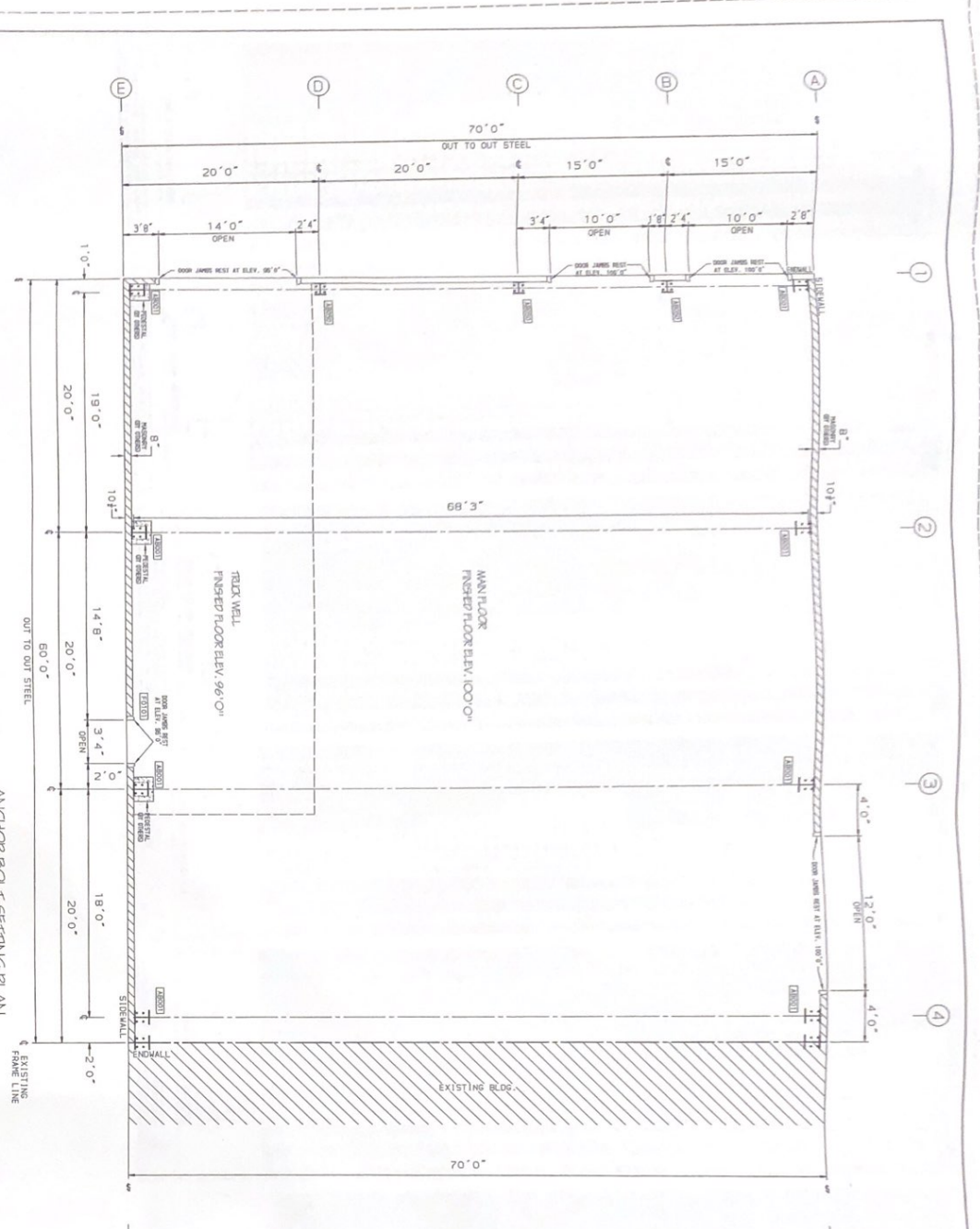


GENERAL NOTES

REVISIONS BY



ANCHOR BOLT SETTING PLAN

NOTE: FINISHED FLOOR ELEVATION = 100'-0" UNLESS NOTED OTHERWISE
BASE PLATE ELEVATION = 100'-0" UNLESS NOTED OTHERWISE

GENERAL NOTES:
1. ALL DIMENSIONS ARE OUT TO OUT OF STEEL, IF CONCRETE
MULTIPLYING DIMENSIONS, THEN THE APPROPRIATE DIMENSIONS
SHOULD BE ADDED TO OBTAIN THE OUT TO OUT OF CONCRETE
2. DIMENSIONS ARE NOT TO SCALE.
3. DIMENSIONS ARE NOT TO SCALE.

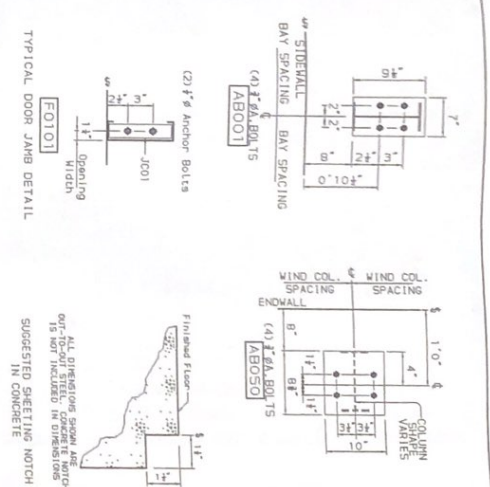
A.B. SIDE AND PROJECTION

ANCHOR BOLT QUANTITY	MIN. LEG	PROJ.	MIN. END
OFF.	RECT. DIA.	TO BOLT (S.B.)	D (IN.)
44	1/2"	6400	2 1/2"
114	1/2"	15,000	3 1/2"
23,400	1/2"	23,400	3 1/2"

ANCHOR BOLT SETTING PLAN
BUILDING MANUFACTURER DESIGN INFORMATION
SECTION LOADS HAVE BEEN APPLIED BY ACCORDANCE WITH THE FOLLOWING DESIGN CODE INFORMATION:
CONCRETE: ACI 308-11
STEEL: AISC 360-10
WOOD: NDS 2012
SEMI-RIGID JOINTS: AISC 308-11
WIND: ASCE 7-10
SEISMIC: IBC 650-2
SOILS: ASCE 7-10
BASE PLATE: AISC 358-10
ANCHOR BOLTS: AISC 308-11
COMPONENTS IS PART OF THE MANUFACTURER'S DESIGN.

REV	DESCRIPTION	BY	DATE
0	CONSTRUCTION	EBN	8/24/24

Kirby
CONSTRUCTION
208 NO. 150012
Dwg No. 13 09"



FOR CONSTRUCTION