

FOR LEASE

1112 NW MARSHALL ST., PORTLAND OR 97209

***RETAIL/COMMERCIAL/RESIDENTIAL
TYPICAL USES: RETAIL STORE/OFFICE/(WORK/LIVE)***



CONTACT: ATUM PROPERTY GROUP 503.490.1020 JUS_SINGH@HOTMAIL.COM

IDEAL PROPERTY FOR RETAIL, WORK/LIVE, OFFICE, ANY COMMERCIAL OR RESIDENTIAL USE.

942 Sq Feet. (574 sq ft main floor ground level and 368 sq feet second floor – loft like layout)

FREE DEDICATED PARKING.

NEXT TO TWO PARKS (TANNER SPRINGS, JAMESON, AND FIELDS)

NEXT TO THE MOST EXPENSIVE BUILDINGS IN THE PEARL - COSMOPOLITAN AND METROPOLITAN

STREET FRONTAGE - FRONT DOOR AND REAR DOOR THAT LEADS TO BUILDING AND PARKING.

1.5 RESTROOMS. ONE FULL BATH UPSTAIRS.

KITCHENETTE WITH STAINLESS STEEL APPLIANCES.

MODERN CHIC.

HIGH CEILINGS AND SKYLIGHT.

COMPLIMENTARY BUSINESSES WITHIN A BLOCK: BANKS, RESTAURANTS, COFFEE SHOPS, SAFEWAY, SALONS/SPAS NEARBY

LIGHT RAIL (STREETCAR) AND BUS LINE A BLOCK AWAY.

QUIET AT NIGHT BUT GOOD AMOUNT OF FOOT TRAFFIC DURING BUSINESS HOURS.

WALK IN CLOSET FOR EXTRA STORAGE

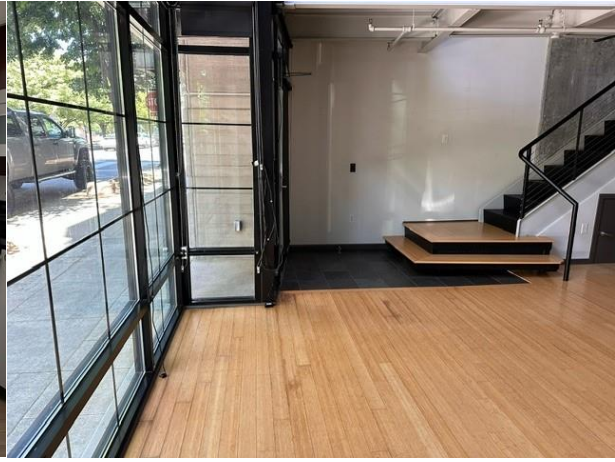
NEWER WASHER AND DRYER UPSTAIRS

BAMBOO FLOORS MAIN LEVEL AND POLISHED CONCRETE ON UPPER LEVEL

ECONOMICS TO BE DISCUSSED (WILL SHARE FLOOR PLAN AS IT BECOMES AVAILABLE) – OPEN TO SHOWING ASAP



Pic Above: Main Floor Feat. with Main Entrance (Plenty of Light)



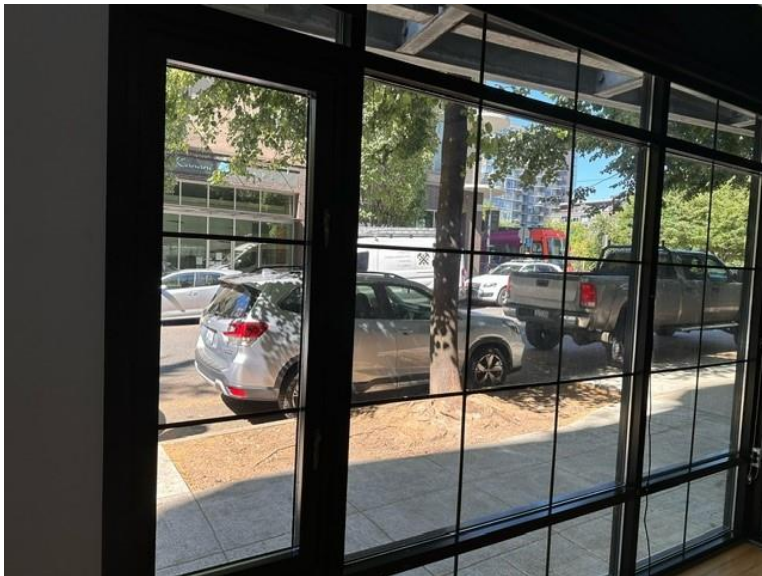
Pic Above: Main Floor Stairs Going to Second Level



Pic Above: Main Floor – Lotta Light + Track Lighting (Grey Rear Door Entrance)



Pic Above: Main Floor – Different Angle with Kitchen



Pic Above: Main Window Overlooks NW Marshall Street



Pic Above: Half Bath on Main Level



Pic Above: Second Level Extensive Light – Skylight Over Both Levels

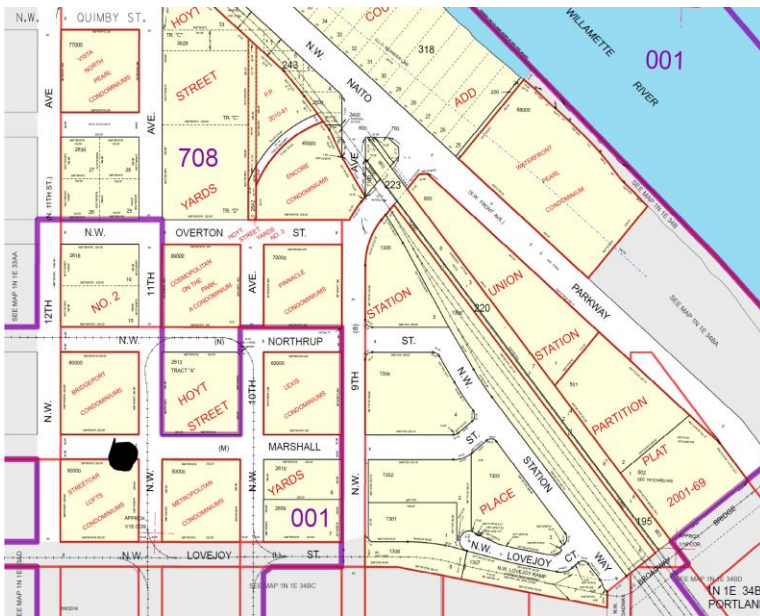
Pic Above: Second Level with Extension to Windows



Pic Above: Second Level Full Bath

Pic Above: Washer/Dryer

Pic Above: Stairs to Lower Level and Front Entrance



Pic Above: Map of Pearl with Black Dot Denoting Location



Pic Above: View of Ceiling from Main Level