

48 LEONA DRIVE

MIDDLEBORO, MA



8,246 SF

INDUSTRIAL SPACE FOR
SUBLEASE

CONTACT:

CHRIS MICHNIEWICZ 774.994.1698
JAMES STUBBLEBINE 617.592.3388
DAVID STUBBLEBINE 617.592.3391
DAVID BERMAN 413.636.9055

CHRIS@STUBBLEBINECOMPANY.COM
JAMES@STUBBLEBINECOMPANY.COM
DAVID@STUBBLEBINECOMPANY.COM
DBERMAN@STUBBLEBINECOMPANY.COM

EXCLUSIVE OFFERING



THE
STUBBLEBINE
COMPANY

CORFAC INTERNATIONAL

PROPERTY SUMMARY



PROPERTY DESCRIPTION

8,246 SF INDUSTRIAL SPACE FOR SUBLEASE

PROPERTY HIGHLIGHTS

- 1ST CLASS FLEX / INDUSTRIAL SPACE
- 22' CLEAR CEILING HEIGHTS IN WAREHOUSE
- CONVENIENTLY LOCATED WITH CLOSE PROXIMITY TO I-495
- SITUATED IN AN ESTABLISHED INDUSTRIAL PARK

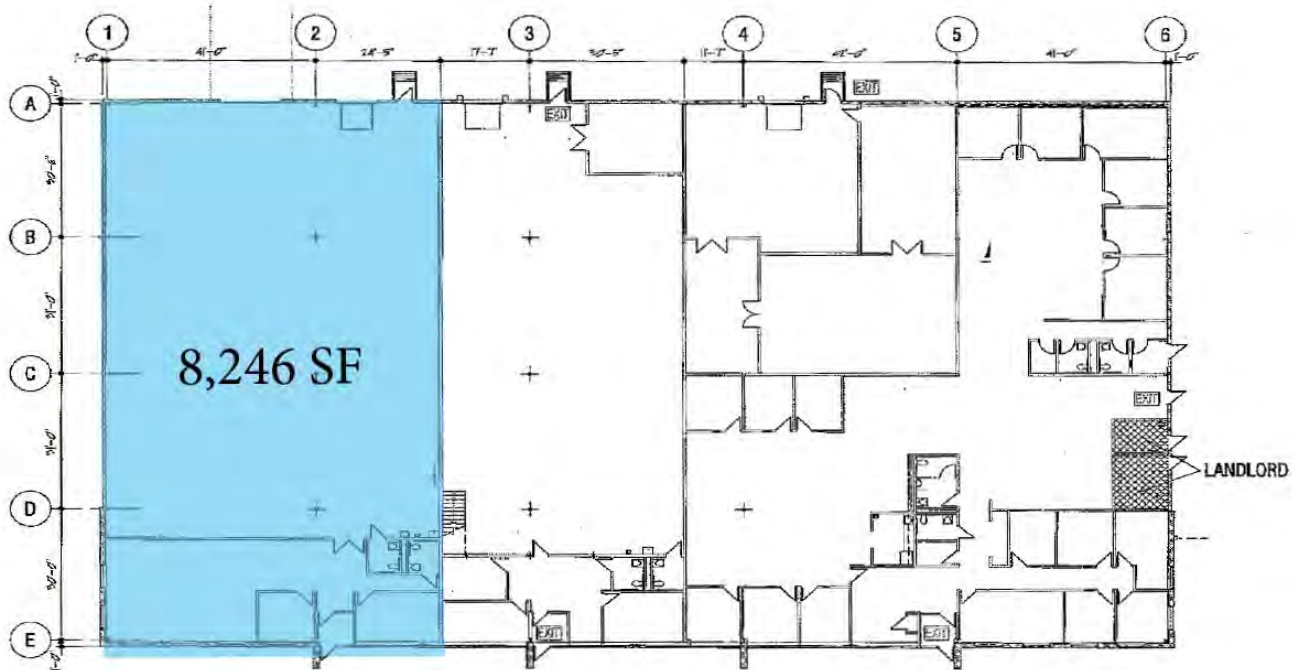
PROPERTY SPECIFICATIONS

BUILDING SIZE/AVAILABLE	8,246 SF
LAND AREA	3.41 ACRES
ZONING	RADO (DEVELOPMENT OPPORTUNITY DISTRICT)
YEAR BUILT	1999
CLEAR HEIGHT	22' CLEAR (9' IN OFFICE)
COLUMN SPACING	30'6" X 40'4"
LOADING	ONE (1) DOCK DOOR ONE (1) DRIVE-IN DOOR
SPRINKLER	WET SYSTEM
WATER/SEWER	TOWN
HVAC AVAILABLE	HEAT AND AC

SPACE AVAILABLE

TOTAL SF	8,246
OFFICE SF	1,729
WAREHOUSE SF	6,517

FLOOR PLAN



LOCATION MAPS

