

SOUTH LIND SQUARE

114,000 SF Industrial Flex/Office Project



AERIAL VIEW FACING EAST



AERIAL VIEW FACING WEST



SOUTH LIND SQUARE INFORMATION SHEET



Project size:	114,000 RSF total in three buildings	
Location:	Lind Avenue SW and SW 41st Street in Renton, Washington. Immediate access to Highway 167; five minutes to I-405	
Communications available:	State-of-the-art telecommunication service provided through CenturyLink (including CenturyLink Fiber) and Comcast Business Cable Service	
Operating expenses:	Estimated costs and expenses in operation, maintenance and repair of the Building and Common Areas for 2018 are \$5.05 per RSF. Tenant is responsible for its separately metered electricity/gas and janitorial service.	
HVAC and janitorial:	Tenant has complete control 24/7 of rooftop HVAC units specific to each suite. Tenant chooses own janitorial service.	
Transit:	South Lind Square has Metro bus stops (<i>Route 906</i>) in front of the property. The Tukwila Station, where the Sounder and all Rapid Rides pass through, is 2 miles away.	
Current tenants include:	Honeywell, Advantage Sales & Marketing, Hanger Clinic, and Mohawk Industries	
Distance to:	Valley Medical Center:	0.7 miles
	Tukwila Station (<i>AmTrak and Sounder trains; RapidRide Transit</i>):	2 miles
	Kent	5 miles
	SeaTac International Airport:	7 miles
	Bellevue:	14 miles
	Seattle:	16 miles
	Tacoma:	24 miles

BIRD'S EYE VIEW



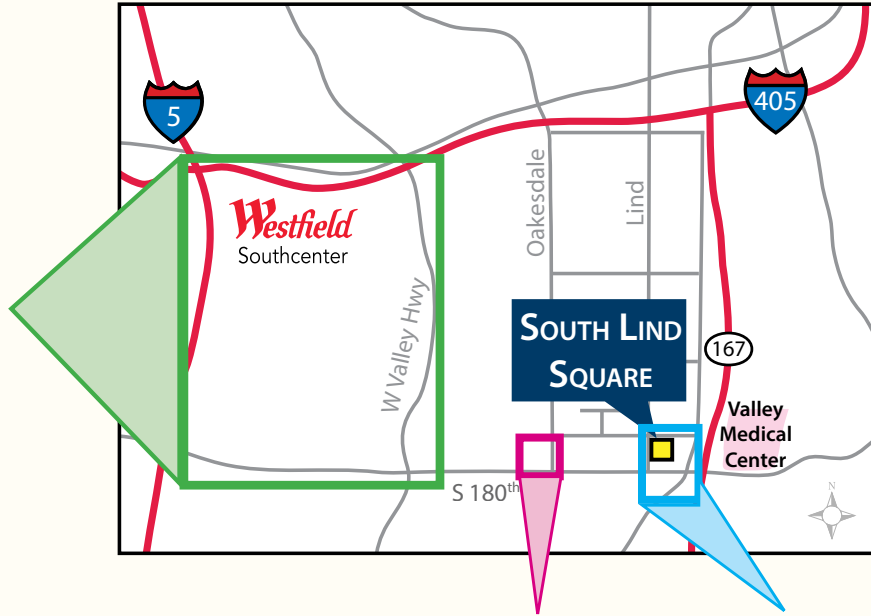
SEATTLE IKEA IS DIRECTLY ACROSS THE STREET!



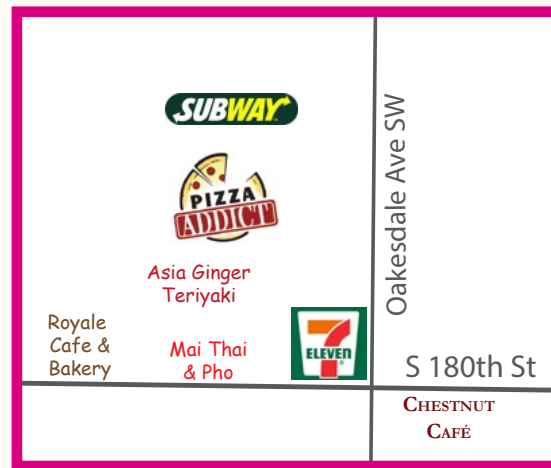
*We hope you've got an appetite
when your company locates in South Lind Square!*

Next door to South Lind Square is the new 399,000 square-foot Seattle IKEA store with a large Swedish restaurant/café open to the public. Enjoy a delicious taste of Sweden in the restaurant and explore IKEA's Food Market for take-home meals and treats!

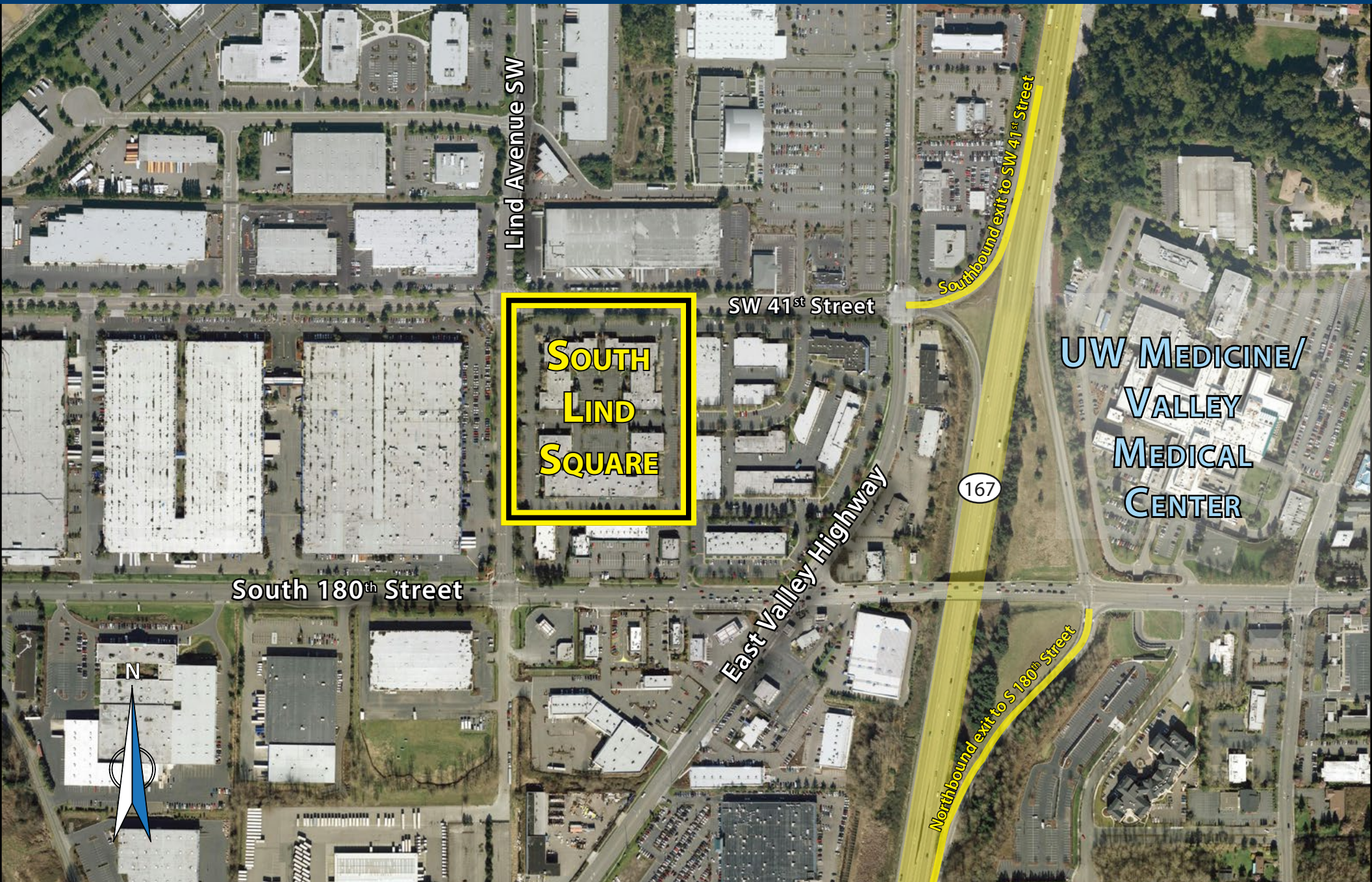




SOUTH LIND SQUARE Area Amenities



SOUTH LIND SQUARE AND SURROUNDING AREA



SOUTH LIND SQUARE



SOUTH LIND SQUARE





ADVANTAGE
WAYPOINT

Michael Hemphill
206-336-5325
mhemphill@andoverco.com

Jim Bisset
206-336-5334
jbbisset@andoverco.com

 **THE ANDOVER COMPANY, INC.**
CORFAC INTERNATIONAL

SOUTH LIND SQUARE