

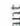







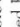




THE PRESERVE GOLF AT TARA CLUBHOUSE

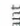



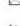
7310 Tara Preserve Lane
Bradenton, FL 34203

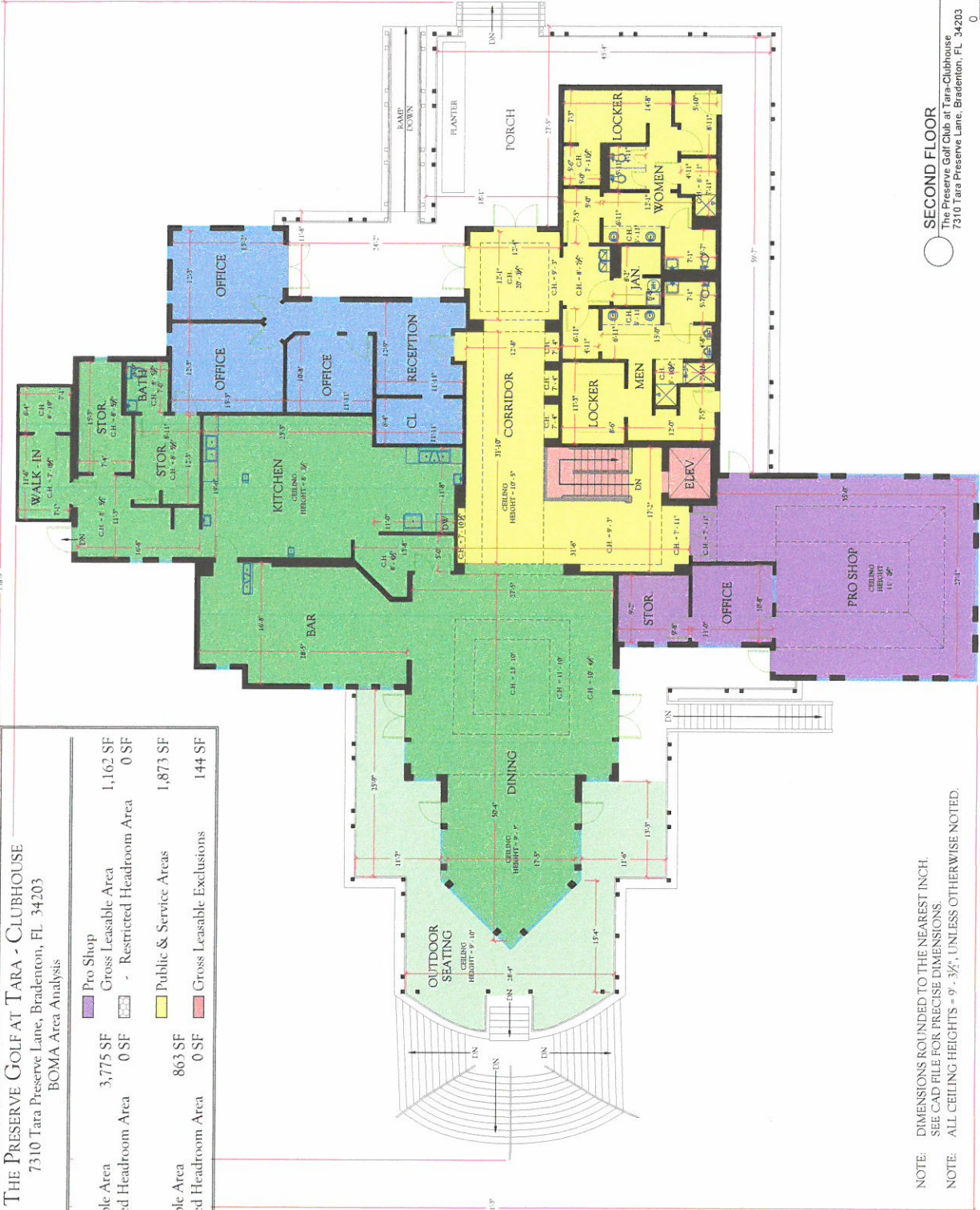


Floor Plans, BOMA Area Plans & BOMA Occupant Area Plans

THE PRESERVE GOLF AT TARA - CLUBHOUSE
 7310 Tara Preserve Lane, Bradenton, FL 34203
 BOMA Area Analysis

	Restaurant		Pro Shop		Offices
	Gross Leasable Area		Gross Leasable Area		Gross Leasable Area
	- Restricted Headroom Area		- Restricted Headroom Area		- Restricted Headroom Area
	863 SF		1,162 SF		1,873 SF
	0 SF		0 SF		144 SF

	Public & Service Areas
	Gross Leasable Area
	- Restricted Headroom Area
	1,873 SF
	0 SF
	Gross Leasable Exclusions
	144 SF



NOTE: DIMENSIONS ROUNDED TO THE NEAREST INCH.
 SEE CAD FILE FOR PRECISE DIMENSIONS.
 NOTE: ALL CEILING HEIGHTS = 9'-3/4", UNLESS OTHERWISE NOTED.

SECOND FLOOR
 The Preserve Golf Club at Tara-Clubhouse
 7310 Tara Preserve Lane, Bradenton, FL 34203






CLIENT: EXECUTIVE PROPERTY MANAGEMENT GROUP
 1731 Mound Street, Suite 200
 Sarasota, FL 34236

DIMENSIONS PLUS
 1533 Northdale Boulevard, Suite 300
 Tampa, Florida 33624
 Toll Free: 1-800-971-2882
 Internet: www.DimensionsPlusInc.com

DRAWING TITLE: The Preserve Golf At Tara - Clubhouse
 Second Floor BOMA Area Plan

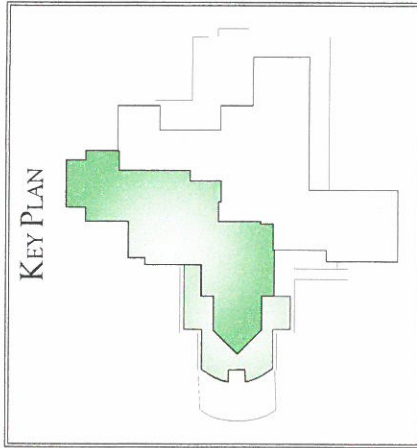
DATE: 8/28/11
 DRAWING NUMBER: I-1.2

THE PRESERVE GOLF AT TARA
 CLUBHOUSE
 Restaurant
 BOMA Area Analysis

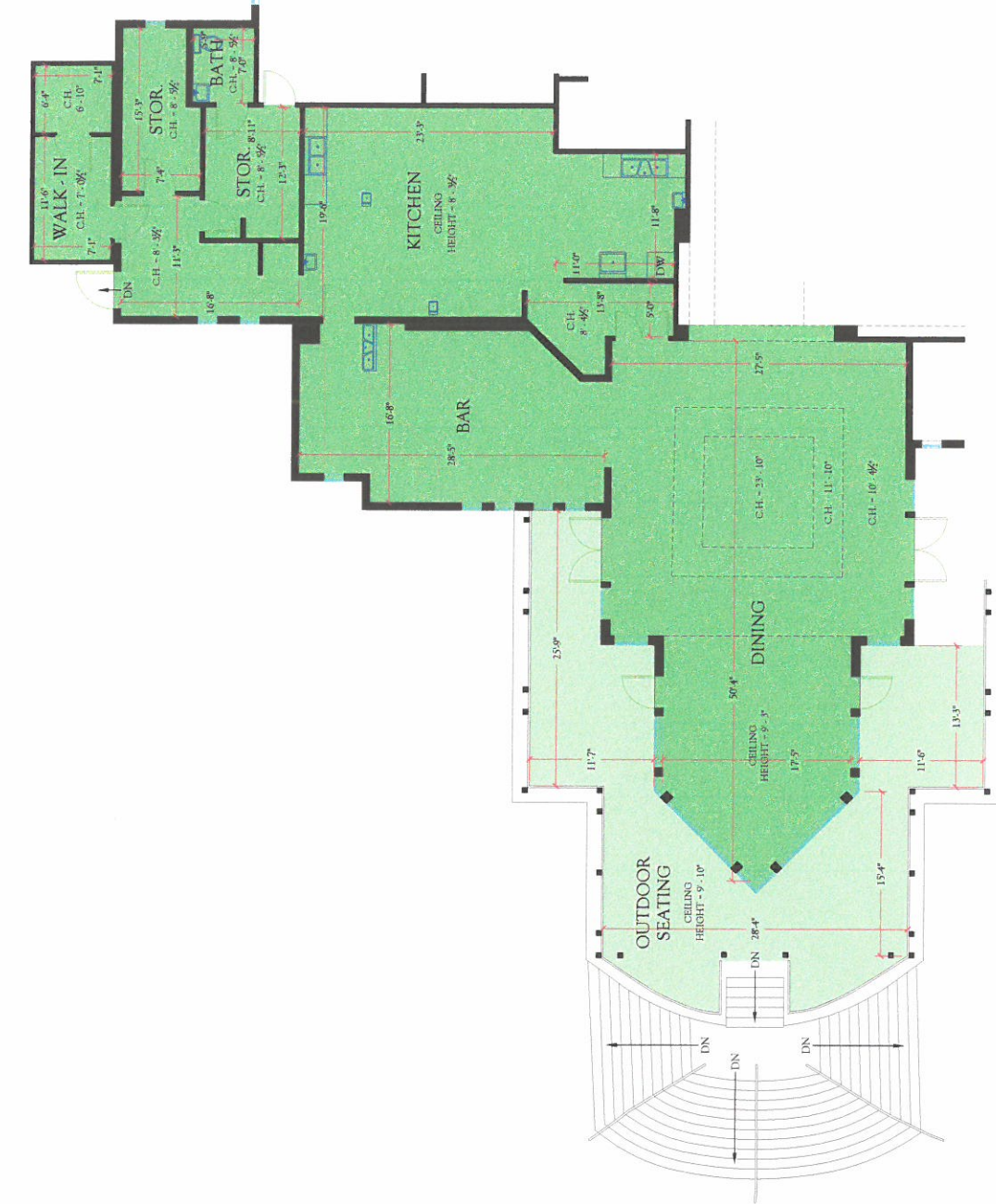
	Gross Leasable Area	3,775 SF
	- Unenclosed Area	808 SF
	- Restricted Headroom	0 SF

STATEMENT OF COMPLIANCE

This plan complies with the Retail Buildings: Standard Methods of Measurement (ANSI/BOMA Z655 - 2020), for the measurement of BOMA Gross Leasable Area (GLA).



NOTE: DIMENSIONS ROUNDED TO THE NEAREST INCH.
 SEE CAD FILE FOR PRECISE DIMENSIONS.
 NOTE: ALL CEILING HEIGHTS - 9'-3/4", UNLESS OTHERWISE NOTED.



RESTAURANT
 The Preserve Golf Club at Tara-Clubhouse
 7310 Tara Preserve Lane, Bradenton, FL 34203



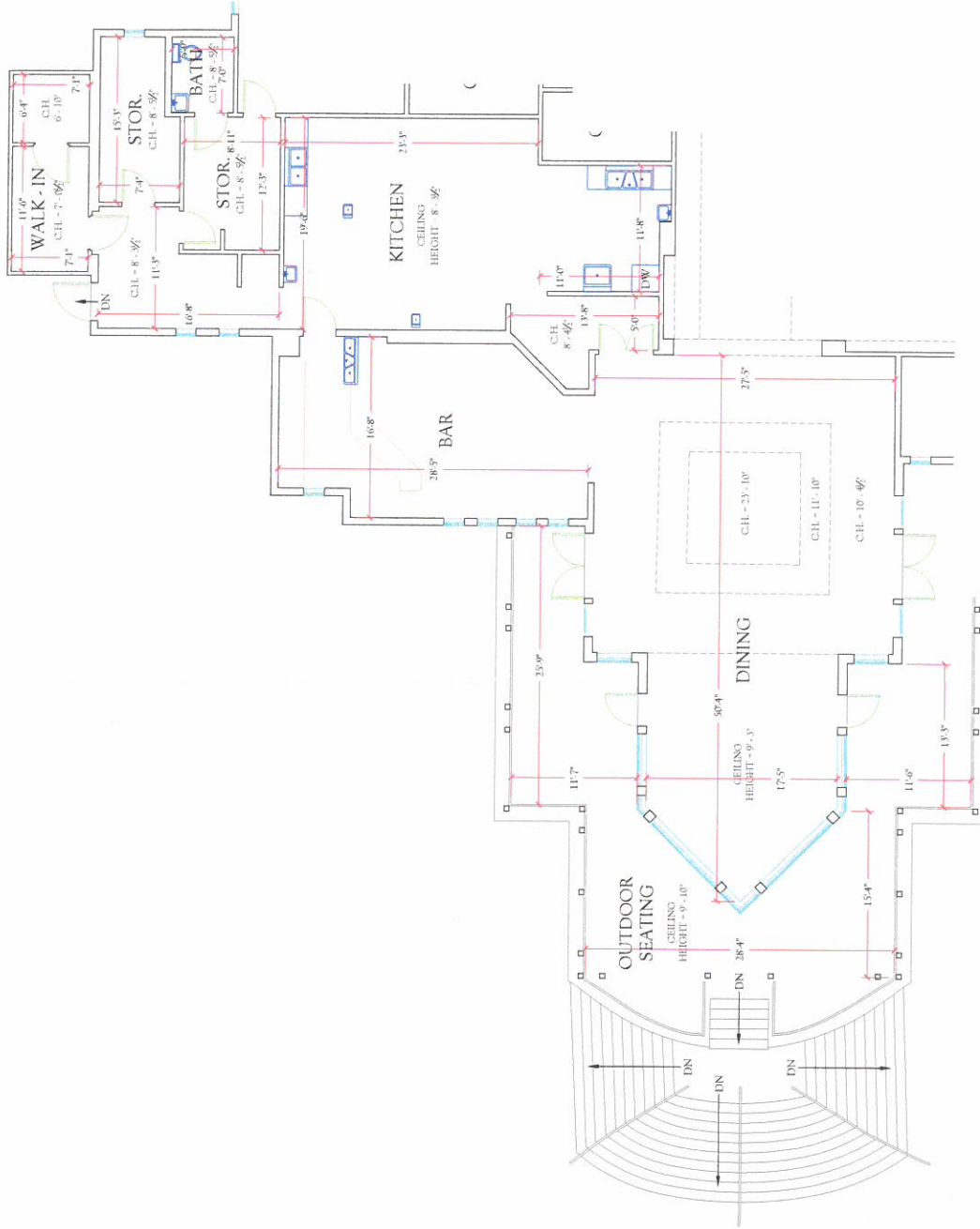
CLIENT: EXECUTIVE PROPERTY MANAGEMENT GROUP
 1751 Mount Street, Suite 200
 Sarasota, FL 34236

DIMENSIONS PLUS
 A Division of
 1833 Northdale Boulevard, Suite 300
 Tampa, Florida 33624
 Toll Free: 1-800-971-2882
 Internet: www.DimensionsPlusInc.com

DRAWING TITLE: The Preserve Golf at Tara - Clubhouse
 Restaurant
 BOMA Occupant Area Plan

DATE: 8-23-20
 DRAWING NUMBER: I-201





NOTE: DIMENSIONS ROUNDED TO THE NEAREST INCH.
 SEE CAD FILE FOR PRECISE DIMENSIONS.
 NOTE: ALL CEILING HEIGHTS - 9' - 3/4", UNLESS OTHERWISE NOTED.

RESTAURANT
 The Preserve Golf Club at Tara-Clubhouse
 7310 Tara Preserve Lane, Bradenton, FL 34203



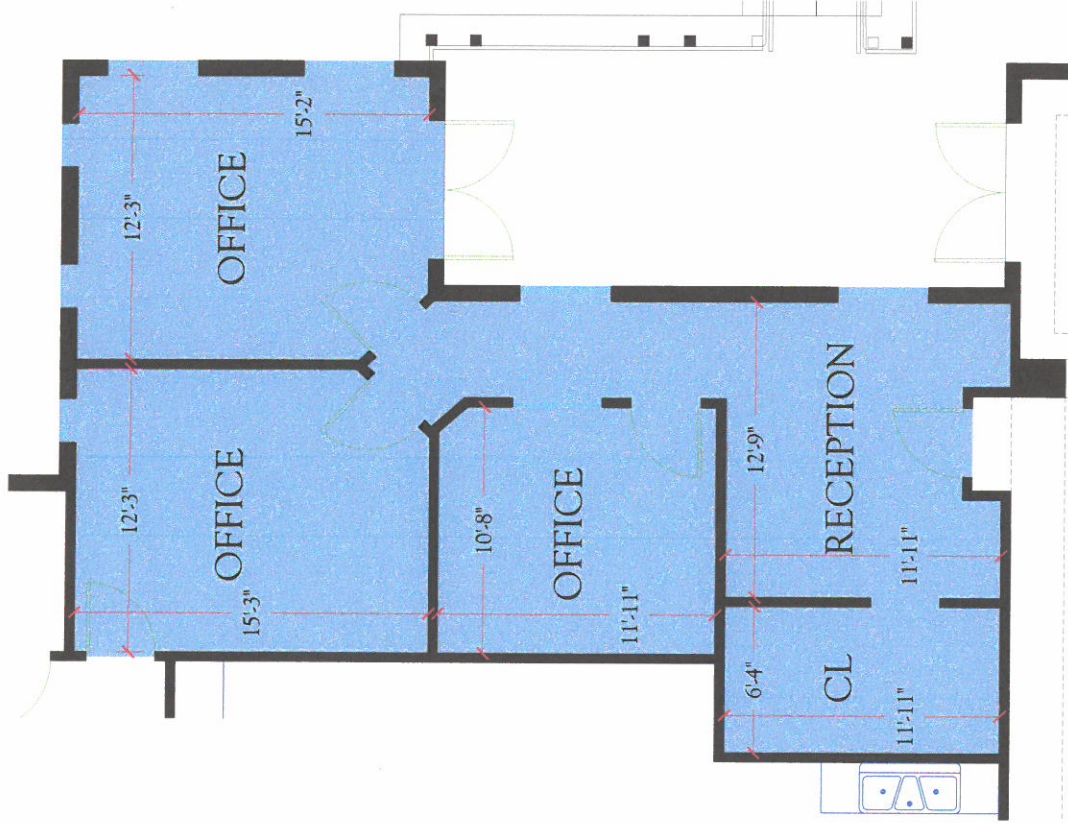
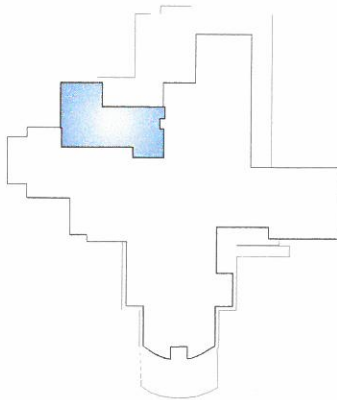
THE PRESERVE GOLF AT TARA CLUBHOUSE
Offices
BOMA Area Analysis

	Gross Leasable Area	863 SF
	- Unenclosed Area	0 SF
	- Restricted Headroom	0 SF

STATEMENT OF COMPLIANCE

This plan complies with the Retail Buildings: Standard Methods of Measurement (ANSI/BOMA Z65.5 - 2020), for the measurement of BOMA Gross Leasable Area (GLA).

KEY PLAN



NOTE: DIMENSIONS ROUNDED TO THE NEAREST INCH.
SEE CAD FILE FOR PRECISE DIMENSIONS.
NOTE: ALL CEILING HEIGHTS = 9' - 3/4", UNLESS OTHERWISE NOTED.



OFFICES
The Preserve Golf Club at Tara-Clubhouse
7310 Tara Preserve Lane, Bradenton, FL 34203

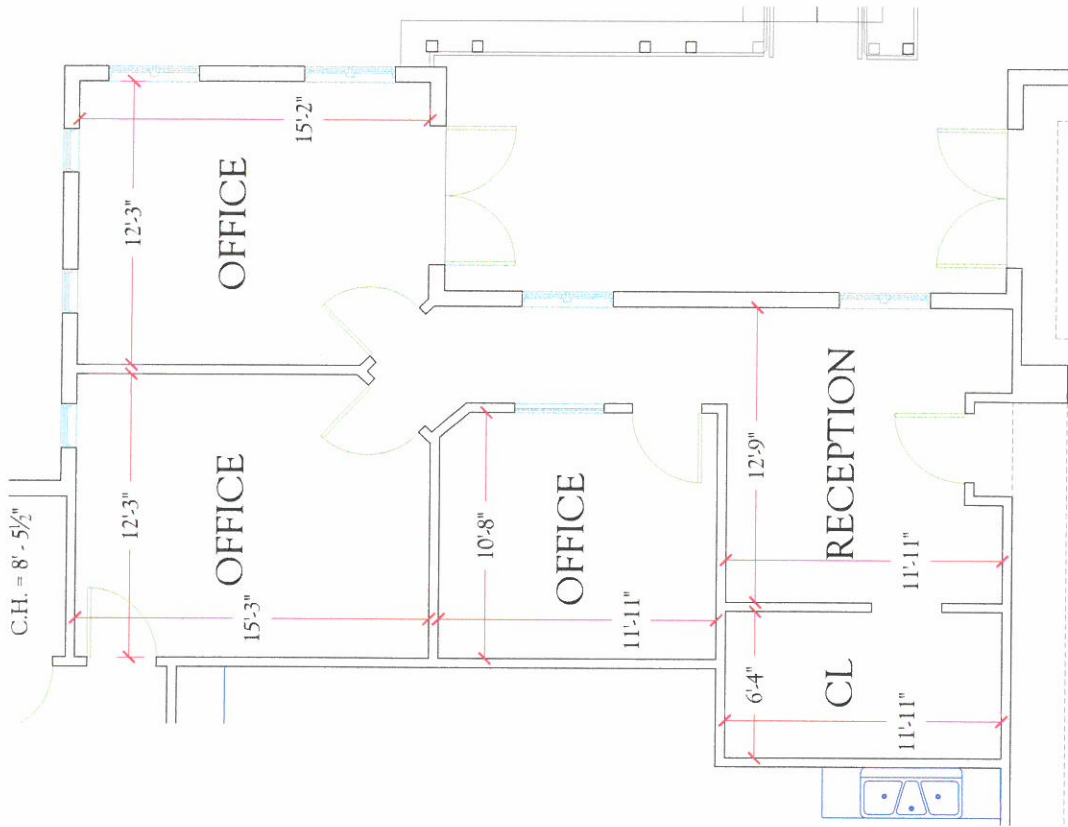


CLIENT: EXECUTIVE PROPERTY MANAGEMENT GROUP
1751 Mount Street, Suite 206
Sarasota, FL 34236

DIMENSIONS PLUS
Internet: www.DimensionsPlusInc.com
Tampa, Florida 33624
Toll Free: 1-800-971-2882
1553 Northdale Boulevard, Suite 360

PROJECT TITLE: THE PRESERVE GOLF AT TARA - CLUBHOUSE
Office
BOMA Occupant Area Plan

DATE: 06.29.16
DRAWING NUMBER: I-202



NOTE: DIMENSIONS ROUNDED TO THE NEAREST INCH.
 SEE CAD FILE FOR PRECISE DIMENSIONS.
 NOTE: ALL CEILING HEIGHTS = 9' - 3/4\", UNLESS OTHERWISE NOTED.

OFFICES

The Preserve Golf Club at Tara-Clubhouse
 7310 Tara Preserve Lane, Bradenton, FL 34203

