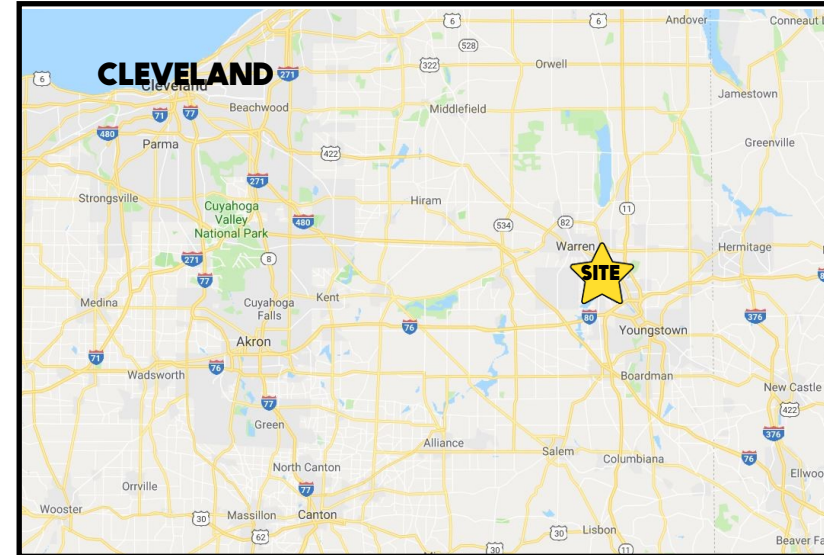


LOCATION

5972-5974-5976 Youngstown Warren Rd, Niles, OH 44446



HIGHLIGHTS

- Redevelopment site by Eastwood Mall Complex
- Current Buildings to be demolished
- 300' Frontage on 422
- 1.37 acres
- Just west of Niles Cortland Rd (SR 46)

TRAFFIC

Youngstown Warren Rd = 15,407 VPD
Niles Cortland Rd = 13,271 VPD

CONTACT

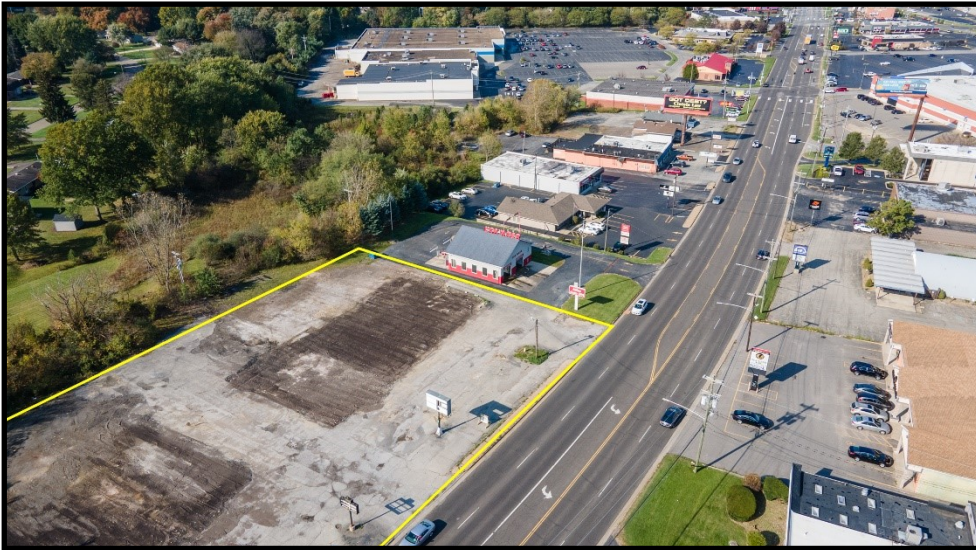
BILL KUTLICK

330.565.5701

bkutlick@platzrealtygroup.com

Office: 330.757.4889 | Fax: 330.294.5622 | 3768 Boardman Canfield Rd, Canfield, OH 44406

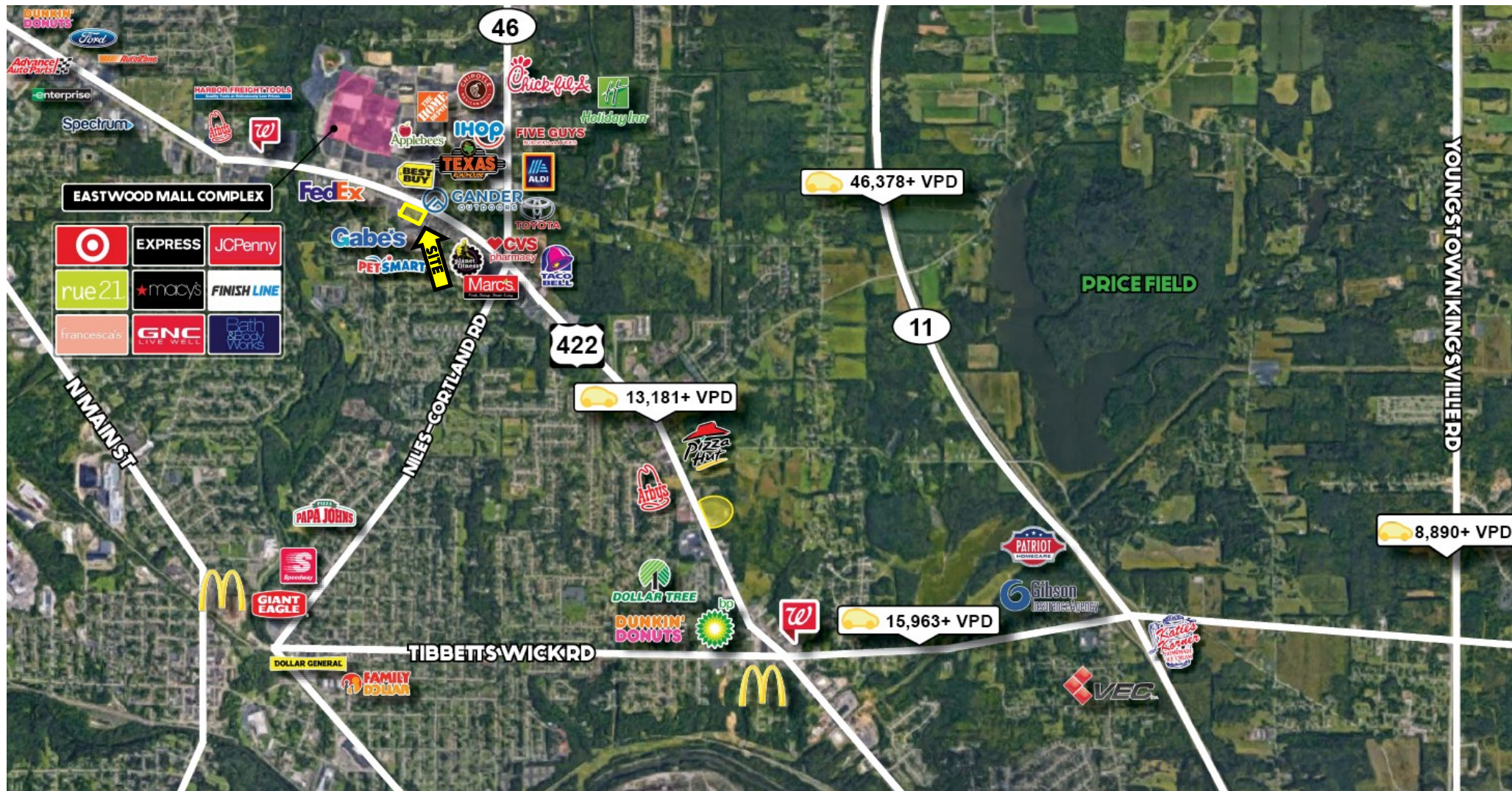
www.PLATZREALTYGROUP.com



Office: 330.757.4889 | Fax: 330.294.5622 | 3768 Boardman Canfield Rd, Canfield, OH 44406

www.PLATZREALTYGROUP.com

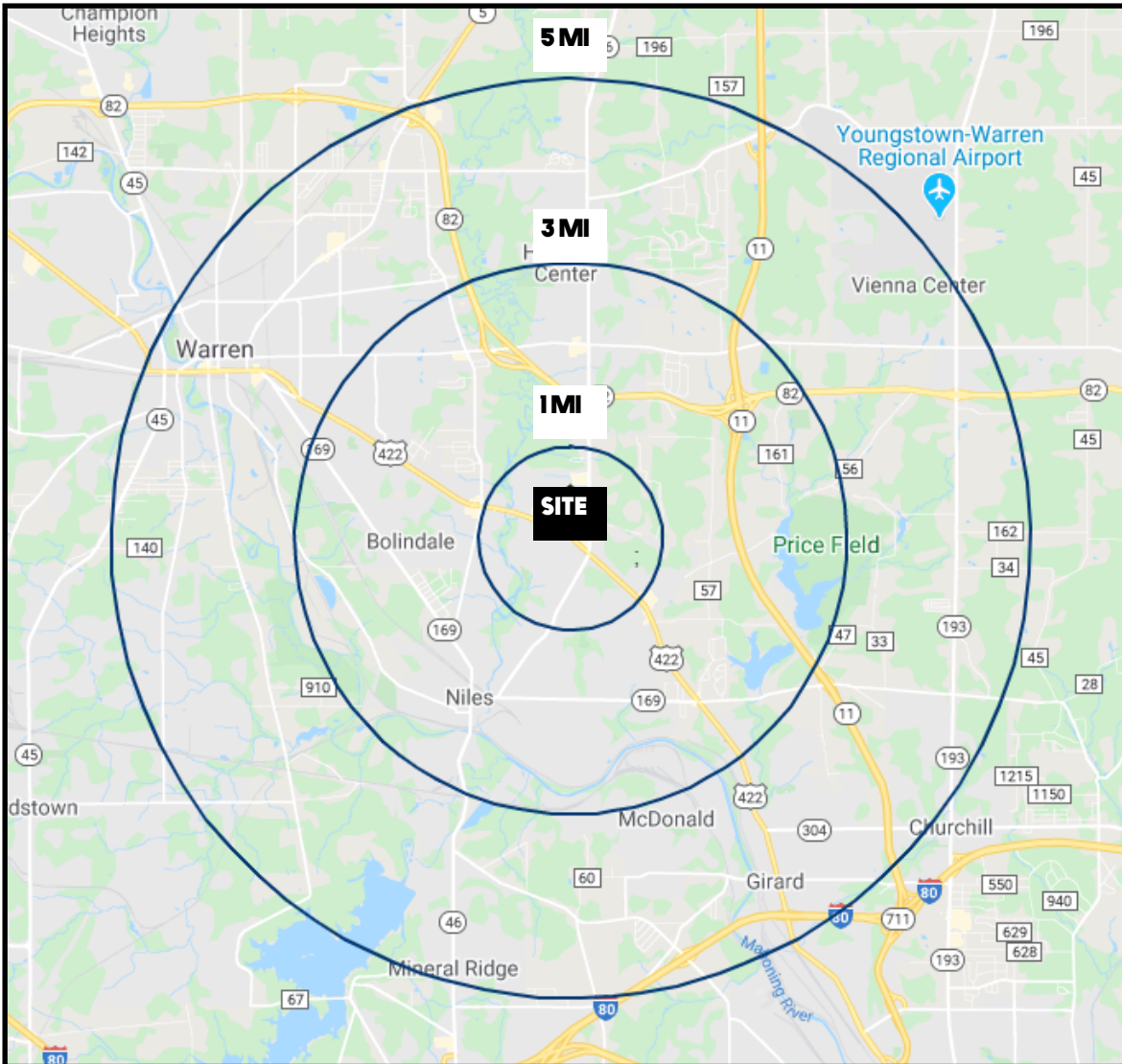
The information presented was obtained from sources believed to be true and reliable. The Platz Realty Group makes no warranties or guarantees to the accuracy of the information.



Office: 330.757.4889 | Fax: 330.294.5622 | 3768 Boardman Canfield Rd, Canfield, OH 44406

www.PLATZREALTYGROUP.com

The information presented was obtained from sources believed to be true and reliable. The Platz Realty Group makes no warranties or guarantees to the accuracy of the information.



DEMOGRAPHICS	1 MI	3 MI	5 MI
POPULATION	4,035	37,302	83,120
HOUSEHOLDS	1,845	16,310	35,427
AVERAGE AGE	43	43	43
MEDIAN HH INCOME	\$53,293	\$42,959	\$41,813

SITE INFORMATION	
LOCATION	Niles City Trumbull County
PROPERTY TYPE	Redevelopment
ZONING	B1 Highway Commercial
PARCELS	20-033633 / 20-033630 / 20-033631
DIMENSIONS	300' x 200' +/-
ACREAGE	1.37 Acres
REAL ESTATE TAXES	\$10,248/year
GROUND LEASERATE	Call for pricing

Office: 330.757.4889 | Fax: 330.294.5622 | 3768 Boardman Canfield Rd, Canfield, OH 44406