

4120 Excelsior Blvd,
ST. LOUIS PARK, MN



Owner/User Office For Sale
6,249 SF AVAILABLE IN ST. LOUIS PARK

Brian Helmken

Executive Vice President

D 612.701.8787

brian.helmken@avisonyoung.com

Erik Heltne

Executive Vice President

D 612.237.9226

erik.heltne@avisonyoung.com

Addison Althoff

Associate

D 612.473.6987

addison.althoff@avisonyoung.com

**AVISON
YOUNG**

For Sale

Property Information

Location:	4120 Excelsior Blvd, St. Louis Park, MN 55416
Gross Building Area:	6,249 sf
Land Area:	0.43 acres
PIDs:	06-028-24-41-0009
Year Built:	1949
Floors:	3
Parking:	19 surface spaces
Zoning:	C-2 General Commercial
Market:	Minneapolis/St.Paul



2021 Demographics

	1 mile	3 miles	5 miles
Population:	59,515	424,375	1,132,526
Avg. HH Income:	\$131,793	\$109,887	\$107,052
2024 HH:	29,060	193,372	486,139

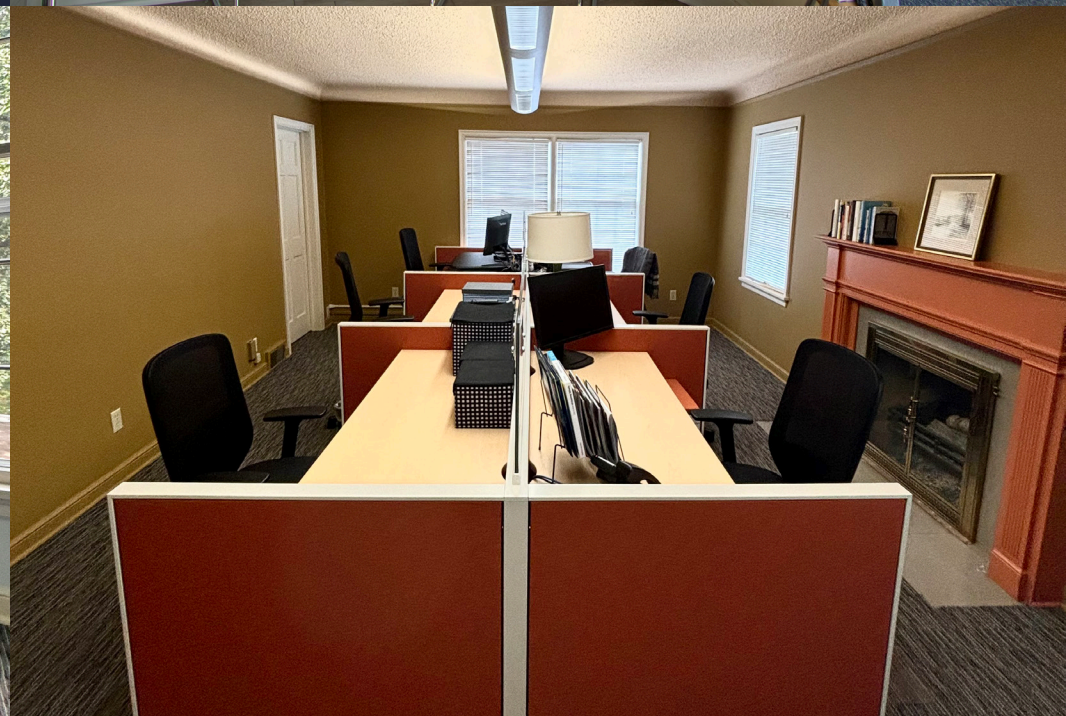
SALE PRICE: \$1,800,000.00

Details

- 0.43 acre lot for sale from owner/user
- Owner will move out upon sale

Property Highlights

- Within walking distance of Excelsior and Grand, the Lakes of Uptown
- 5 Minutes from Hwy 100
- Property conveniently located near The Minikahda Club



Floor Plans

- Main Level
- Upper Level
- Lower Level

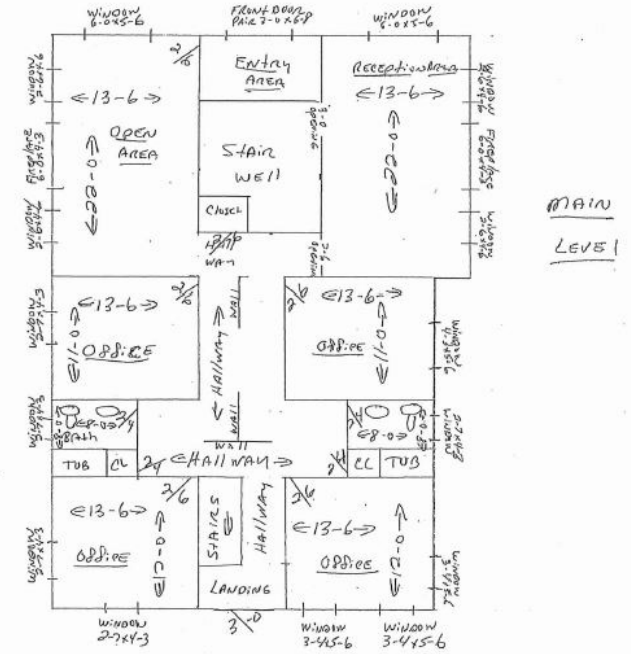
4120 Excelsior Boulevard - Main Level

4120 EXCELSIOR BLVD, ST. LOUIS PARK, MN 55416

BALDWIN/MATTSON OFFICE BUILDING

4120 EXCELSIOR BLVD
ST. LOUIS PARK, MINN

1/8" = 1'-0"



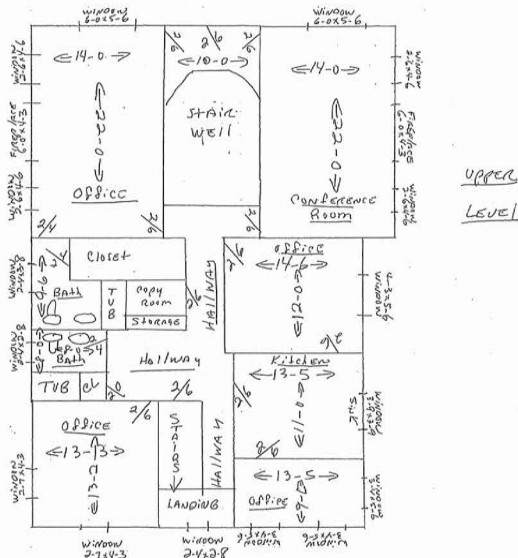
4120 Excelsior Boulevard - Upper Level

4120 EXCELSIOR BLVD, ST. LOUIS PARK, MN 55416

BALDWIN/MATTSON OFFICE BUILDING

4120 EXCELSIOR BLVD
ST. LOUIS PARK, MINN

1/8" = 1'-0"



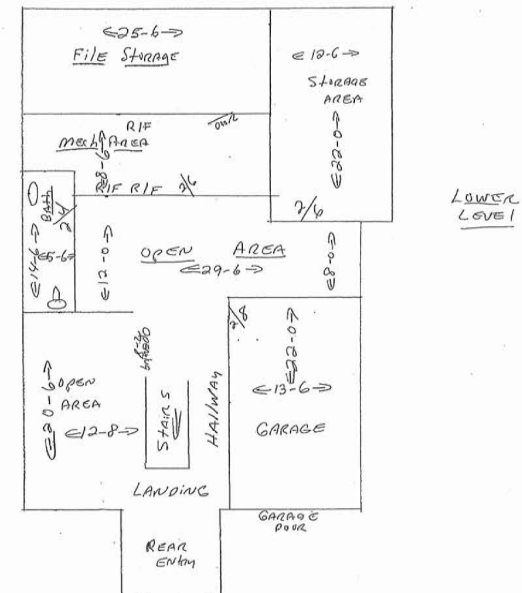
4120 Excelsior Boulevard - Lower Level

4120 EXCELSIOR BLVD, ST. LOUIS PARK, MN 55416

BALDWIN/MATTSON OFFICE BUILDING

4120 EXCELSIOR BLVD
ST. LOUIS PARK, MINN

1/8" = 1'-0"



Amenity Map



Get in touch!

Brian Helmken

Executive Vice President

D 612.701.8787

brian.helmken@avisonyoung.com

Erik Heltne

Executive Vice President

D 612.237.9226

erik.heltne@avisonyoung.com

Addison Althoff

Associate

D 612.473.6987

addison.althoff@avisonyoung.com

