

GENERAL NOTES - PLAN

- A SEE GENERAL NOTES ON SHEET T1.2 FOR ADDITIONAL REQUIREMENTS.
- B DIMENSIONS TO DOORS AND WINDOWS ARE TO CENTER OF FRAMED OPENING UNLESS NOTED OTHERWISE.
- C SEE STRUCTURAL DRAWINGS AND CALCULATIONS FOR ALL STRUCTURAL REQUIREMENTS, INCLUDING FOUNDATION WALL SPECIFICATIONS, AND SHEARWALL AND HOLDDOWN REQUIREMENTS.
- D PROVIDE SOUND INSULATION IN ALL WALLS AROUND BATHROOMS
- E COORDINATE ALL WINDOW HEAD HEIGHTS AND SIZES WITH ELEVATIONS AND WINDOW SCHEDULE
- F FIRE SPRINKLING SYSTEM REQUIRED

PROJECT NUMBER

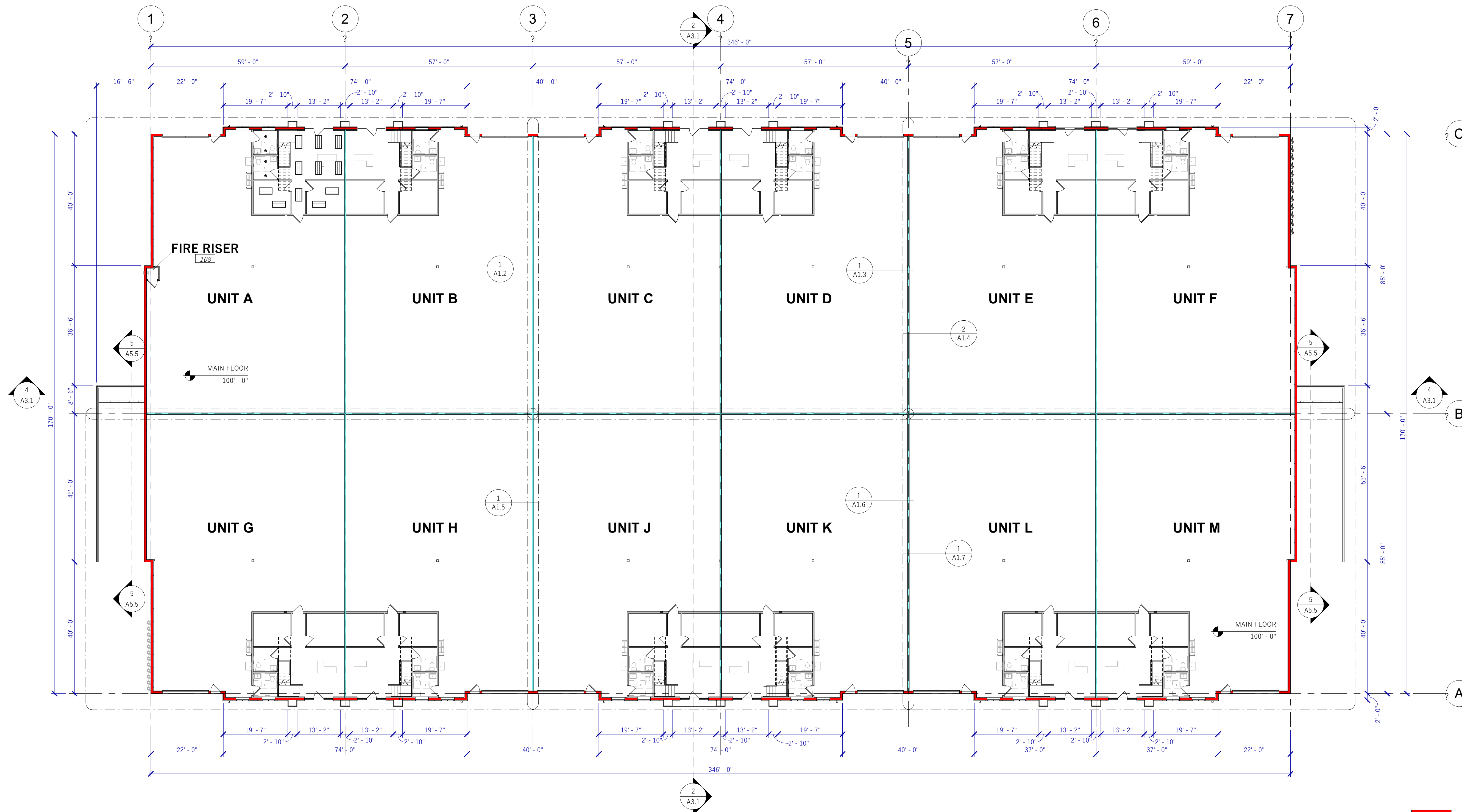
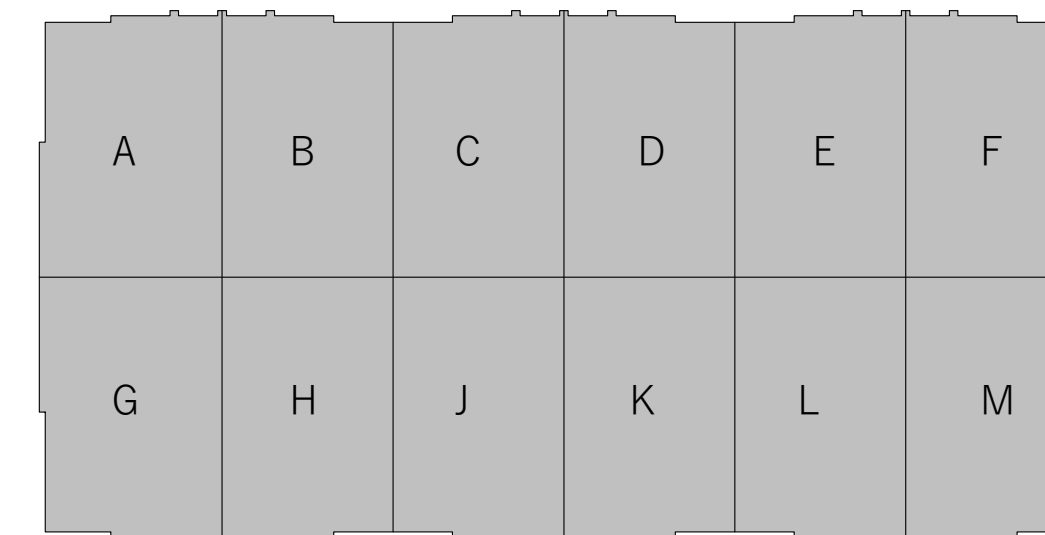
20062

ISSUE DATE:

OCTOBER 7, 2020

REVISIONS:

No. Date



SPRING POINT LOT 8
752 NORTH 2250 WEST
SPRINGVILLE, UTAH

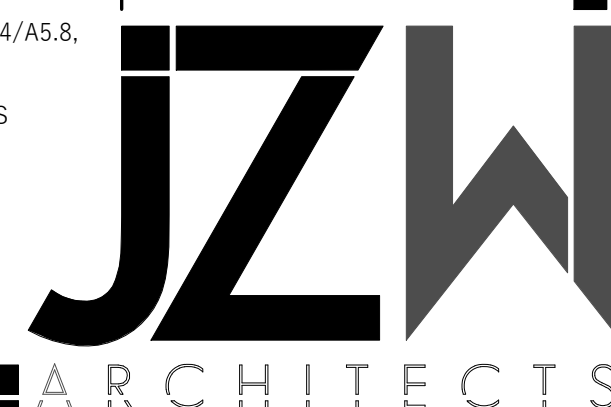
OVERALL MAIN
FLOOR PLAN

A1.1



WALL TYPES

- 2 HOUR RATED 8X16 CMU WALL AS PER DETAIL 1/A5.8 AND ELEVATIONS
- 2 HOUR RATED 8X16 CMU WALL AS PER DETAILS 3/A5.8, 4/A5.8, 5/A5.8 AND ELEVATIONS.
- 2 HOUR RATED 8X16 CMU WALL WITH 2X4 FURR WALL AS PER DETAIL 2/A5.8
- 1 HOUR RATED 2X6 WALL AS PER DETAIL 8/A5.8
- 2X4 NON RATED WALL AS PER DETAIL 6/A5.8
- 2X6 NON RATED WALL AS PER DETAIL 7/A5.8



1 MAIN FLOOR PLAN
A1.1 1/16" = 1'-0"