

**NORTH PARK
CORPORATE CENTER**
COVINGTON, LA



stirling

FOR LEASE

PROPERTY SUMMARY

Northpark Corporate Center is a premier Class A office building located in a master planned, office, retail, and residential community of 287 acres just minutes from the Causeway in Covington, LA. The park boasts of a prestigious list of corporate neighbors including Cantium USA, Chevron, Hornbeck Offshore, LOOP, & POOLCORP.

BUILDING INFORMATION

- 115,000 SF
- Class A
- 5 Stories
- 3 Elevators
- 23,000 SF floor plate
- Fabulous views of pond, lavish landscaping and natural green space on 10.5 acres
- Professional management
- 352 Parking spaces

AVAILABLE (JANUARY 2025)

- Suite 220 - 5,675 RSF*
- Entire 3rd Floor - 21,129 RSF
- Suite 300 - 11,071 RSF
- Suite 305 - 2,308 RSF
- Suite 308 - 2,276 RSF
- Suite 310 - 766 RSF
- Suite 320 - 4,877 RSF
- Suite 520 - 4,132 RSF*

PRICE

- \$26.00 per SF

NEARBY AMENITIES

- Courtyard by Marriott & Residence Inn (Walking Distance)
- Numerous dining establishments
- Banks
- Health Fitness center

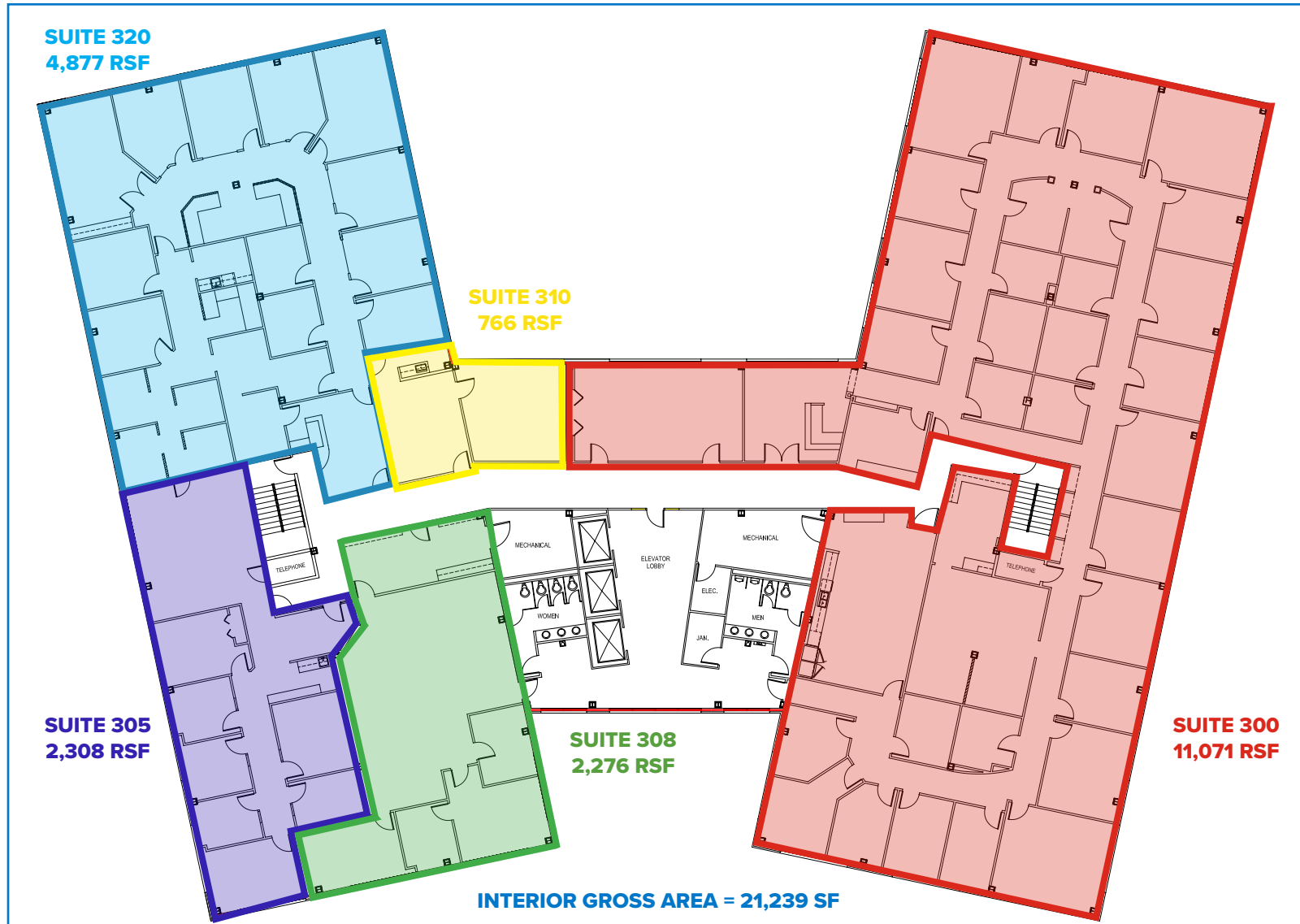
2024 DEMOGRAPHICS

	3 MI	5 MI	7 MI
Population	36,352	88,009	119,596
Avg. HH Income	\$124,042	\$127,737	\$128,045

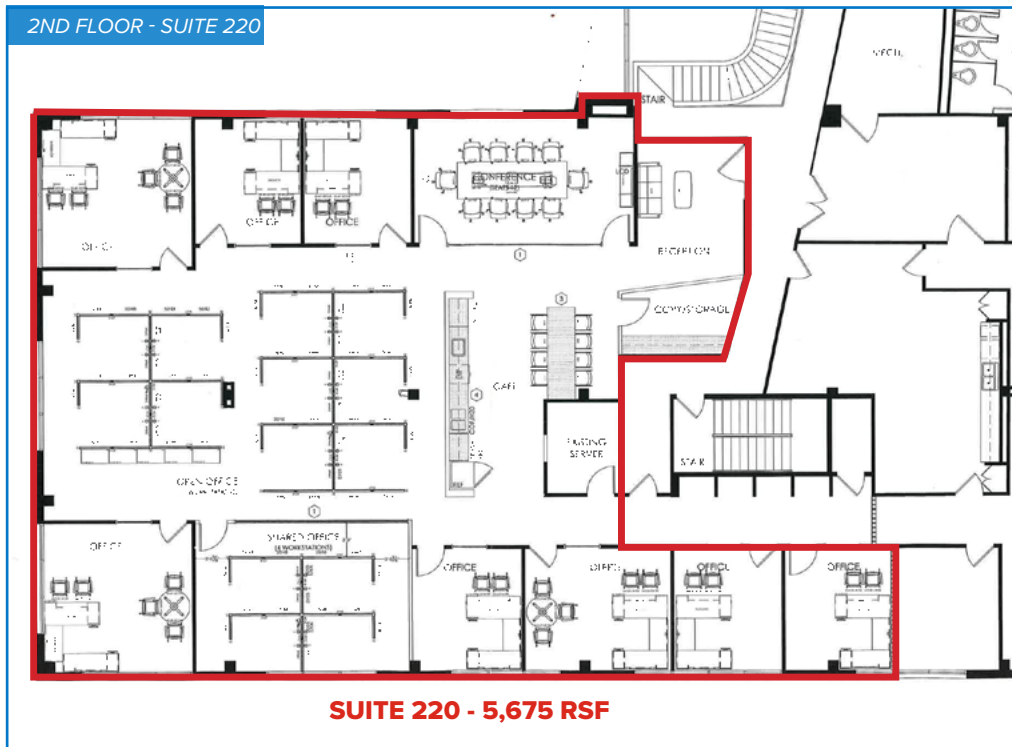
*Available immediately



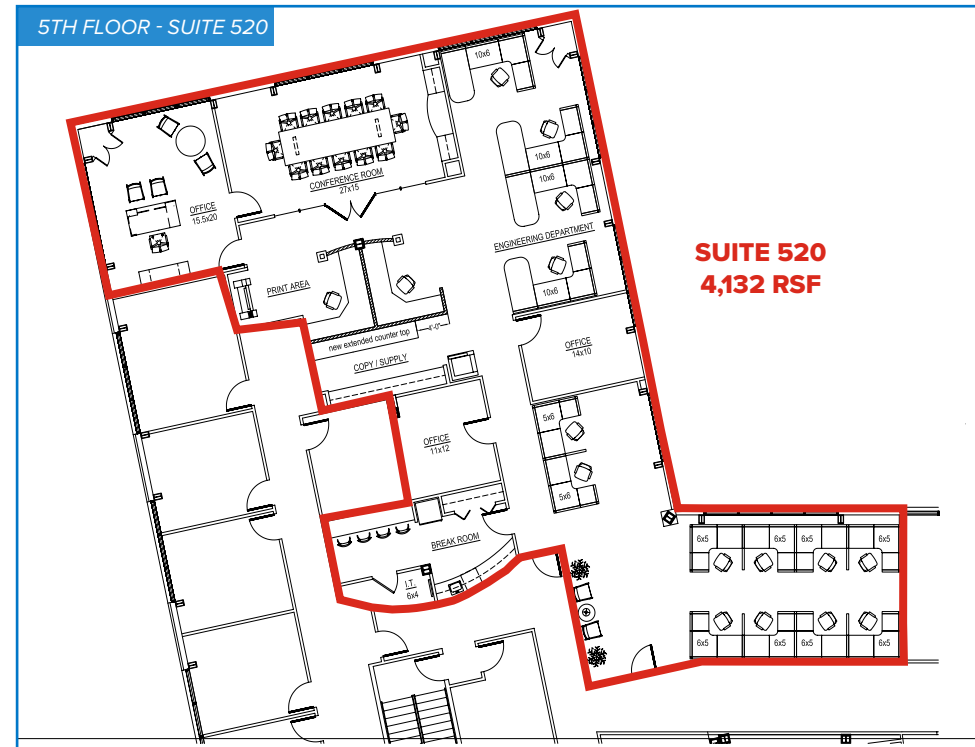
TO VIEW AVAILABLE SUITES, CLICK THE OUTLINES BELOW.



OTHER FLOOR AVAILABILITY - SUITE 220 & 520



Click image for larger view



Click image for larger view



PHOTOS

