

**1375
E 6th St**

A SPACE TO *CREATE*

State-of-the-Art Production HQ
in the Heart of the Arts District

FOUND.
REAL ESTATE

OVERVIEW

**TAKE A
TOUR
HERE**



UNIT
5



TEASER RATE
\$1.95 NNN



TERM
Through November
30, 2027



PARKING
15 spaces



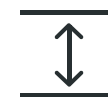
FF&E
Negotiable



POWER
400 amps

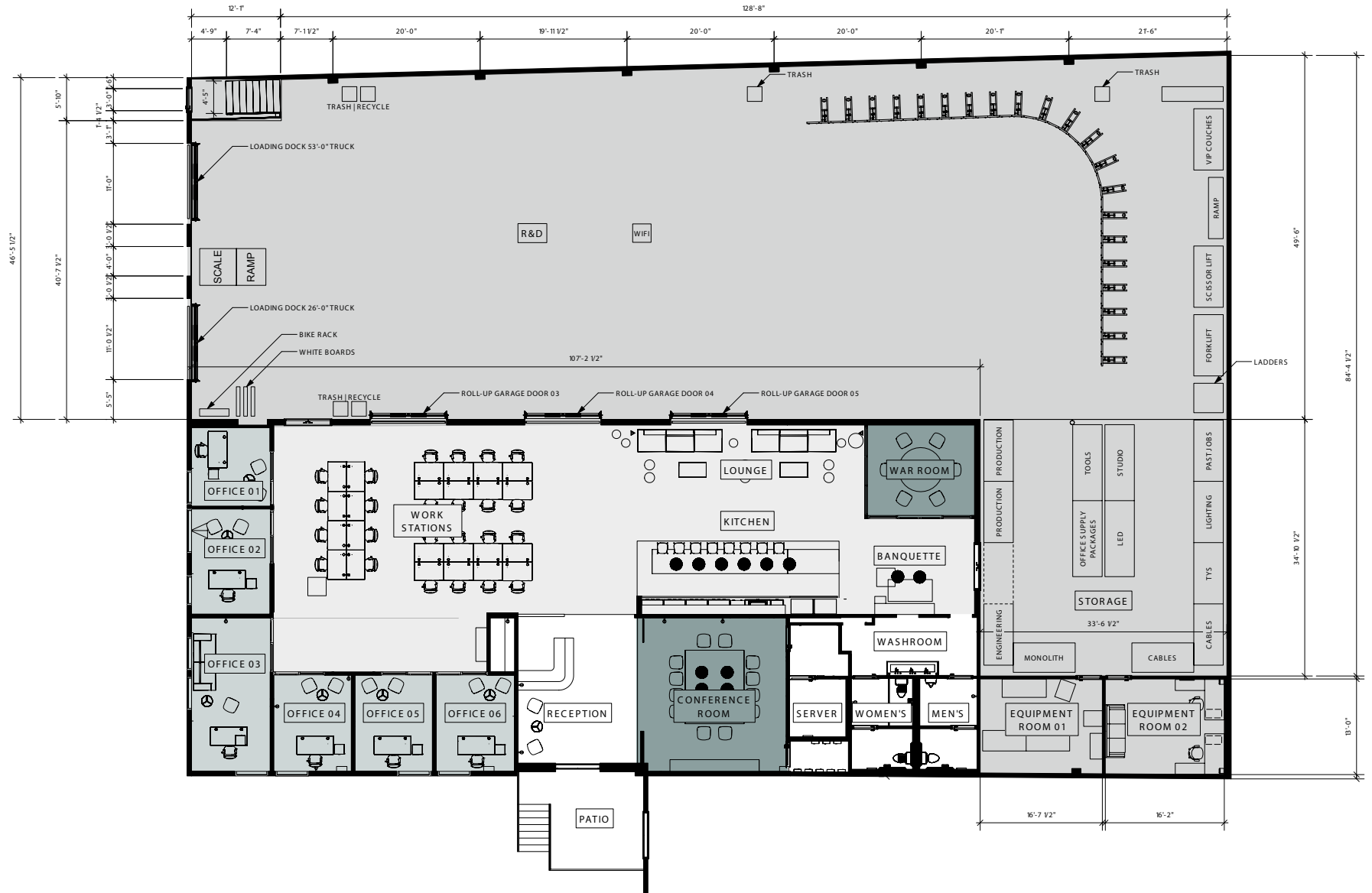


DOCK-HIGH
LOADING DOORS
2



CLEAR HEIGHT
25'

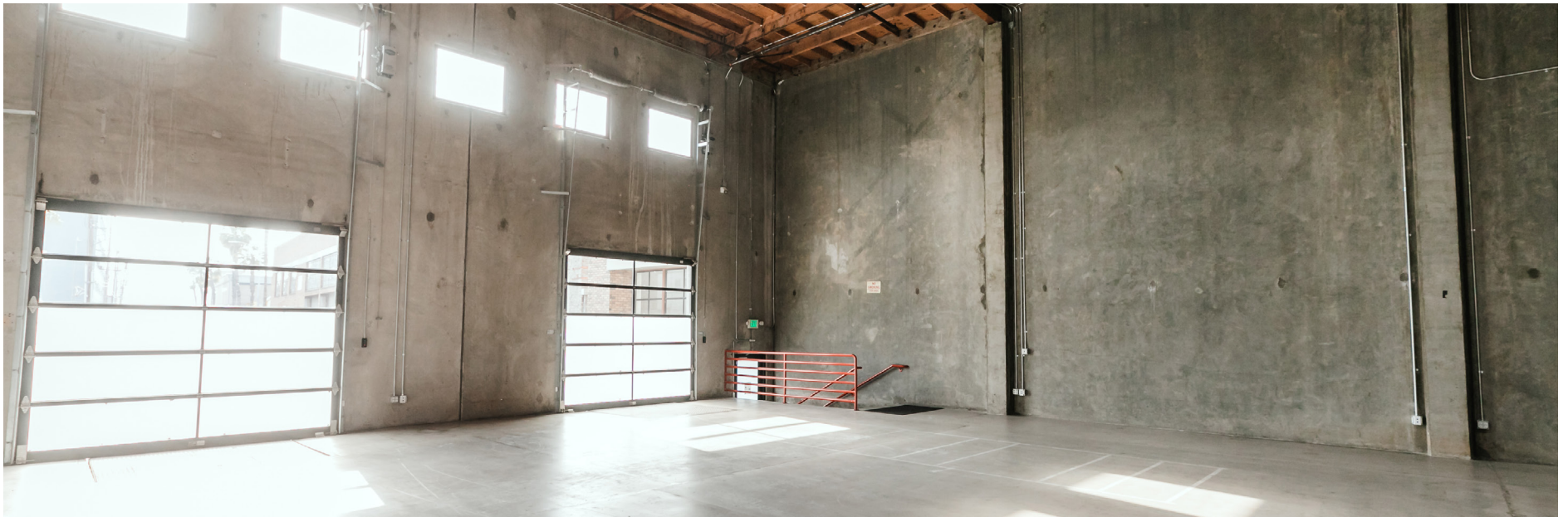
FLOOR PLAN



PRODUCTION + R&D AREA



PRODUCTION + R&D AREA



KITCHEN



LOUNGE



COLLABORATIVE AREA



COLLABORATIVE AREA



PRIVATE OFFICES



MEETING ROOMS



IN THE NEIGHBORHOOD

- 1 **ZINC**
CAFE | MARKET | BAR
- 2 GIRL & THE GOAT
- 3  **THE FACTORY KITCHEN**
- 4 **BRERA**
- 5 BAVEL
- 6 
Urth Caffe
*Exclusively Organic Coffees
& Fine Teas*
- 7 **BESTIA**
- 8 
Bread
LOUNGE
- 9 **ARTS DISTRICT**
BREWING COMPANY
- 10 **Wurstküche**
- 11 SOHO WAREHOUSE



- 12 *Manuela*
- 13 LA *Cha Cha Chá*
- 14 **DE
LA NONNA**
- 15 
LOQUI
- 16 **YANGBAN**
- 17 **DAMIAN**
- 18 **E.R.B.**
- 19 *Death & Co*
- 20 **YESS**
- 21 
AFURI

**1375
E 6th St**

FOR MORE INFORMATION

DOUG FILLMORE

Principal

310.943.7169

doug@foundcre.com

BRE# 02092675

MATT MCLAUGHLIN

Principal

310.694.3979

matt@foundcre.com

BRE# 02079289

Every effort has been made to accurately represent this property and its potential. However, all information and estimates provided are to be used for informational purposes only. They are not to be construed as an exact representation of the property or a prediction of future value. Potential lessees or buyers are advised to conduct a thorough investigation of the property independently. This brochure and the contents herein do not constitute a contract, warranty, or an offer, which can only be made by the property's legal owner. Images and depictions are for illustrative purposes only and may not represent current conditions or conveyance of the property.