

HUGE PRICE IMPROVEMENT

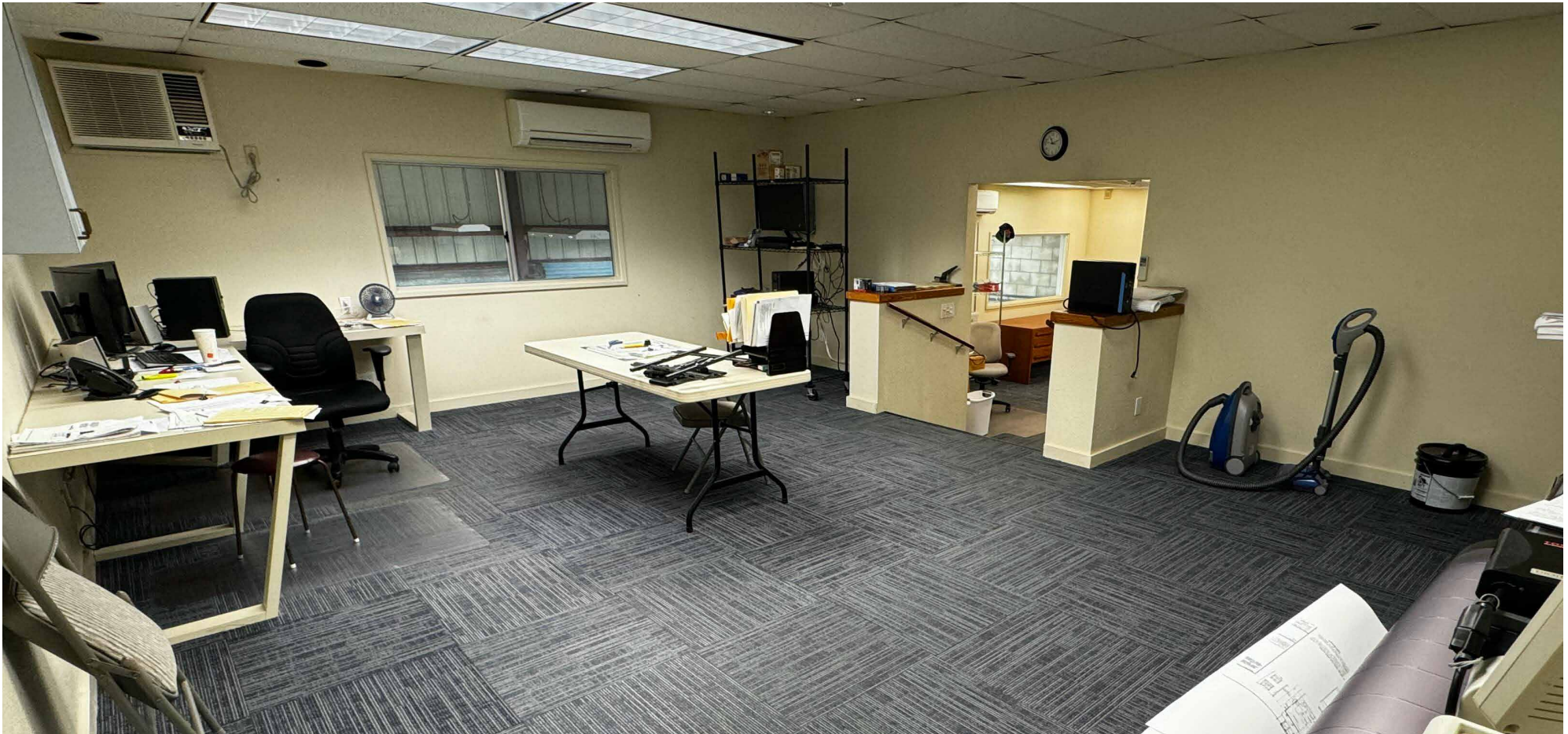


FOR SALE | FREESTANDING KALIHI WAREHOUSE

914 INDUSTRIAL ROAD · HONOLULU, HAWAII 96819



INDUSTRIAL
GROUP HAWAII



PROPERTY DESCRIPTION

Don't miss this opportunity to purchase a beautiful free-standing warehouse in Kalihi. The building is appointed with 2 -12X14' roll-up doors, 2 personnel doors and gated parking lot for security and peace of mind. The interior of the building is high cube with insulated ceilings and includes a PV system with 18 panels. There are 2 restrooms on the ground floor and upstairs office has a kitchenette

and private restroom with shower. This is an owner's delight and is perfect for small contractor.

Conveniently located in the heart of Kalihi Mauka with excellent freeway access in both West & East bound directions. Nearby attractions include Ham's Produce, Nanding's Bakery, Total Fitness USA, Sysco Hawaii and New City Nissan.



PROPERTY DETAILS

TMK 1-1-2-1-68

HUGE PRICE IMPROVEMENT ~~\$1,650,000~~

NEW PRICE **\$1,450,000**

TENURE FEE SIMPLE

ZONING IMX-1

WAREHOUSE AREA: 1,960 SF

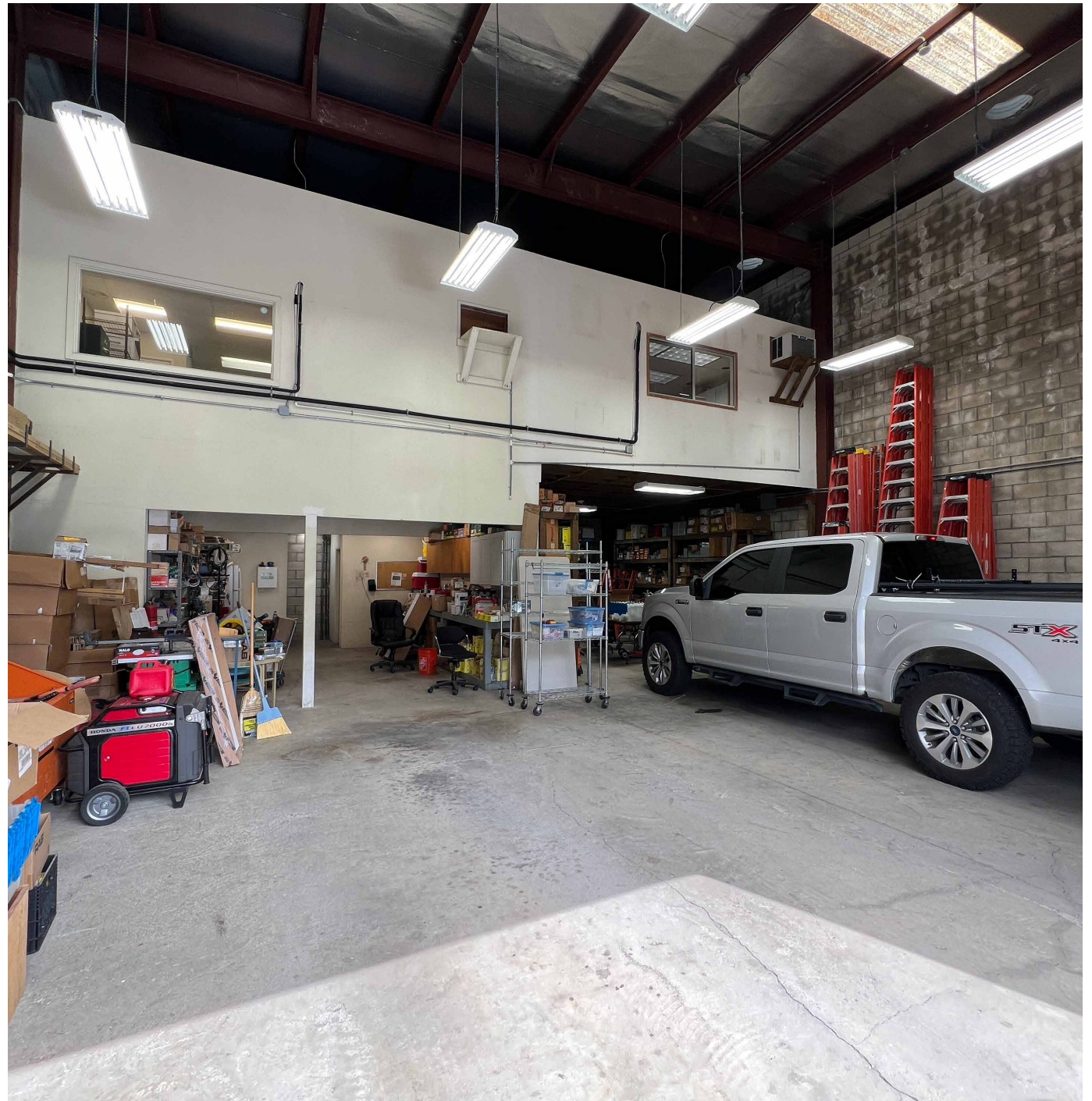
OFFICE AREA: 900 SF

TOTAL AREA: 2,860 SF

LAND AREA: 3,000 SF

PARKING: 4 STALLS

PV SYSTEM: 18 PANELS





914 INDUSTRIAL ROAD



INDUSTRIAL
GROUP HAWAII

JAY K. ELICKER (B) CCIM, SIOR
Senior Vice President • RB 21204
808-218-8318 • jelicker@caahawaii.com

KEVIN KO (S)
Senior Associate • RS 82504
808-971-1986 • kko@caahawaii.com

SEAN DO (S) CCIM
Vice President • RS 75040
808-387-6903 • sdo@caahawaii.com

©2024 Commercial Asset Advisors. All information contained herein is obtained from sources deemed reliable. However, no representations or guarantees are made as to the accuracy thereof, and it is provided herein subject to errors, omissions, changes and withdrawals without notice. Offeror and/or his agent should confirm this information prior to making any offer. Buyer agrees that all negotiation shall be conducted through CAA only. No subagency is offered or intended.

