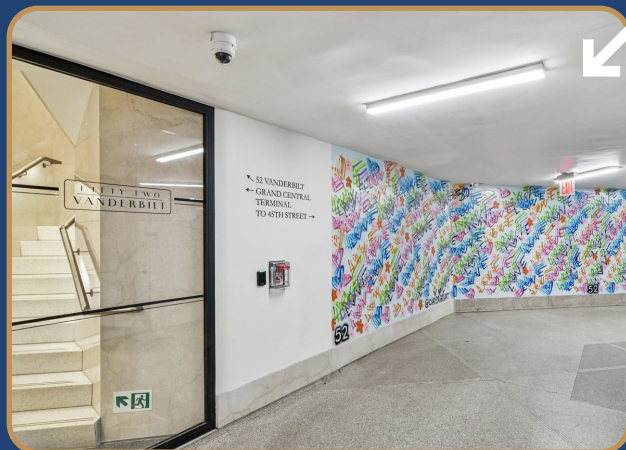


# FIFTY TWO VANDERBILT



DIRECT ACCESS TO  
GRAND CENTRAL

UNRIVALED  
ACCESS IN  
THE HEART OF  
GRAND CENTRAL



Entire Floor  
Available  
for Direct Lease  
17<sup>th</sup> Floor | 9,275 RSF

Open ceilings  
Grand light & views  
Large open area

# FIFTY TWO VANDERBILT



**Entire 17th Floor**  
9,275 RSF  
Available Immediately

**KELLI BERKE**  
+1 212 841 7718

[kelli.berke@cushwake.com](mailto:kelli.berke@cushwake.com)

**JOSHUA BRANHAM**  
+1 212 698 5625

[joshua.branham@cushwake.com](mailto:joshua.branham@cushwake.com)

**MITCH ARKIN**  
+1 212 841 7522

[mitchell.arkin@cushwake.com](mailto:mitchell.arkin@cushwake.com)

# FLOOR PLANS

Existing Conditions

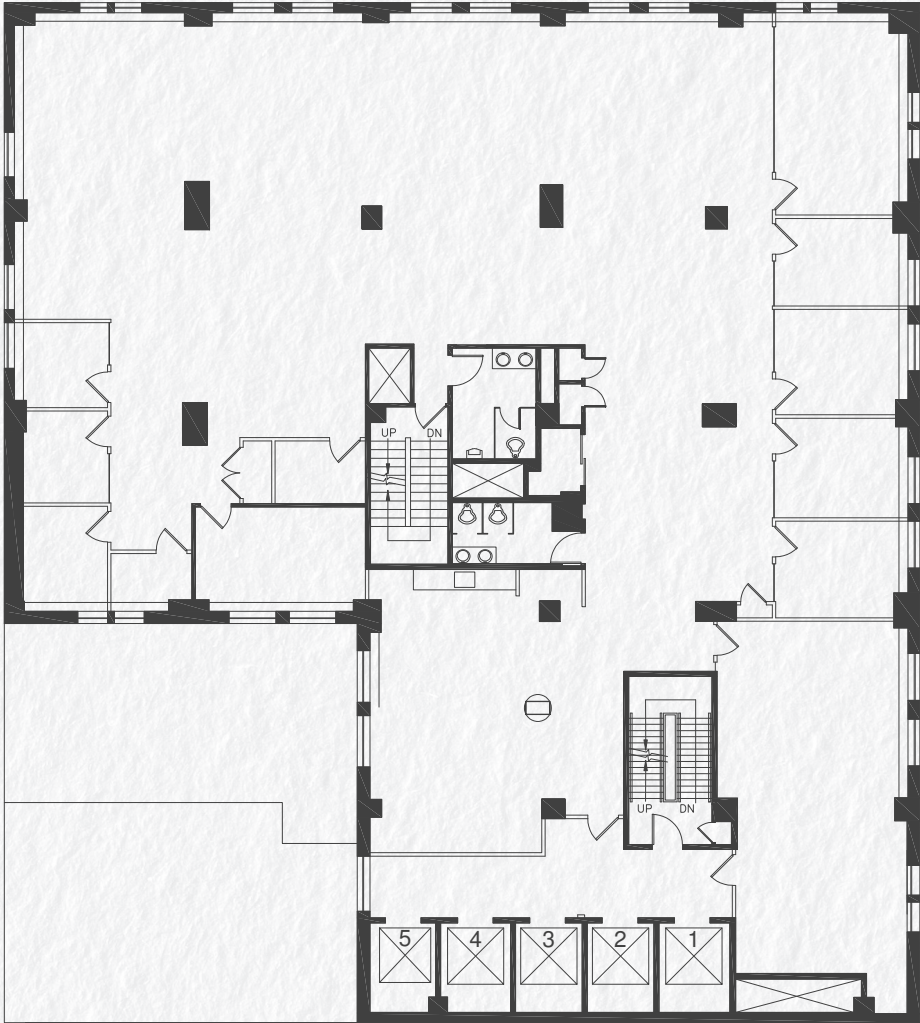
## Entire 17th Floor- Suite 1700

9,275 RSF



East 45th Street

8 Offices  
1 Conference room  
50 Workstations



Vanderbilt Avenue

**KELLI BERKE**  
+1 212 841 7718

kelli.berke@cushwake.com

**JOSHUA BRANHAM**  
+1 212 698 5625

joshua.branham@cushwake.com

**MITCH ARKIN**  
+1 212 841 7522

mitchell.arkin@cushwake.com



**Club Fifty Two** is a private amenity center on the 6th floor, exclusively serving the building's tenants, their employees, and guests. The center features a boardroom, breakout rooms, a lounge area, phone booths, and a pantry—plus, complimentary coffee is available in the lounge.

**KELLI BERKE**  
+1 212 841 7718

[kelli.berke@cushwake.com](mailto:kelli.berke@cushwake.com)

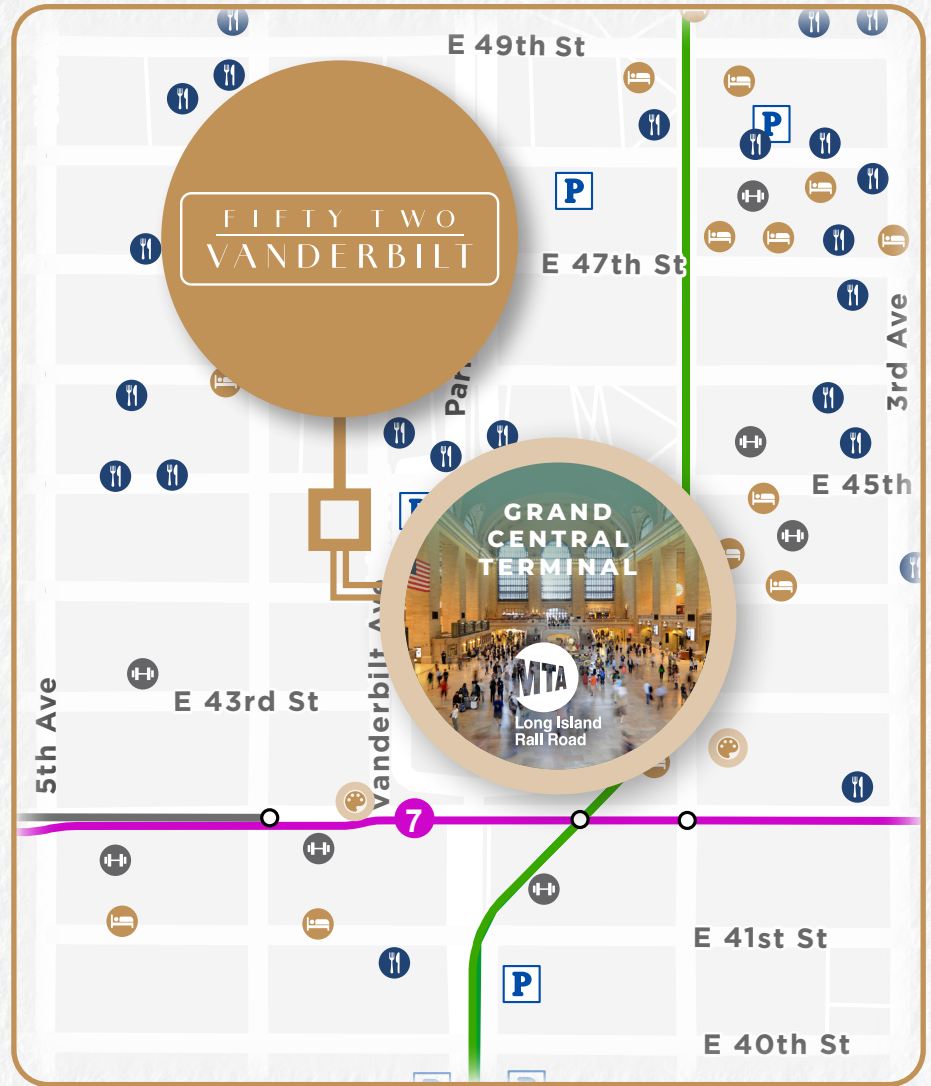
**JOSHUA BRANHAM**  
+1 212 698 5625

[joshua.branham@cushwake.com](mailto:joshua.branham@cushwake.com)

**MITCH ARKIN**  
+1 212 841 7522

[mitchell.arkin@cushwake.com](mailto:mitchell.arkin@cushwake.com)

# Walk down the stairs from the Building Lobby into Grand Central Terminal



## DIRECT CONNECTION TO GRAND CENTRAL

Direct access to 4 5 6 7 S and Metro-North Trains

5-minute walk to 5th Avenue - Bryant Park 7 Train

Less than 10-minute walk to B D F M Trains

 Long Island Rail Road operates six train branches that serve Long Island and connect to Grand Central Madison

KELLI BERKE  
+1 212 841 7718

kelli.berke@cushwake.com

JOSHUA BRANHAM  
+1 212 698 5625

joshua.branham@cushwake.com

MITCH ARKIN  
+1 212 841 7522

mitchell.arkin@cushwake.com