

# MEDICAL OFFICE FOR SUBLEASE

IN SAN JOAQUIN VALLEY

**137 S Aspen Court #A Visalia , CA 93291**



- **4,780 SF Available in a Two Story Medical Building Located in the Visalia Medical Districts**
- **Minutes from Kaweah Delta Healthcare Medical District - the Largest Hospital in Tulare and Kings Counties**
- **Potential Synergies with Other Medical Practices**
- **Easy Access to Highway 99 and 198**
- **Large Private Parking Lot for Patients and Staff - 60 Total**
- **Common Area Amenities and Renovated Restrooms**





# PER DIEM OPPORTUNITY



## DAILY RATE NEGOTIABLE



- ✓ **12 Exam and Procedure Rooms**
- ✓ **Reception and Waiting Area**
- ✓ **Modern Renovated Office Space**
- ✓ **Nurse Station and Private Offices**
- ✓ **Available: Some Exam Rooms from M to Thr. Entire Office on Fridays.**

**Steve Body, Ph.D, MBA, MSF, MA**

[www.MDRECapital.com](http://www.MDRECapital.com)

**818-852-9255**

[Steve@mdrecapital.com](mailto:Steve@mdrecapital.com)

CA BRE #01927373

Forward Studio City CA BRE #01428774

**Pelin Sen, MBA**

[www.passmedmanagement.com](http://www.passmedmanagement.com)

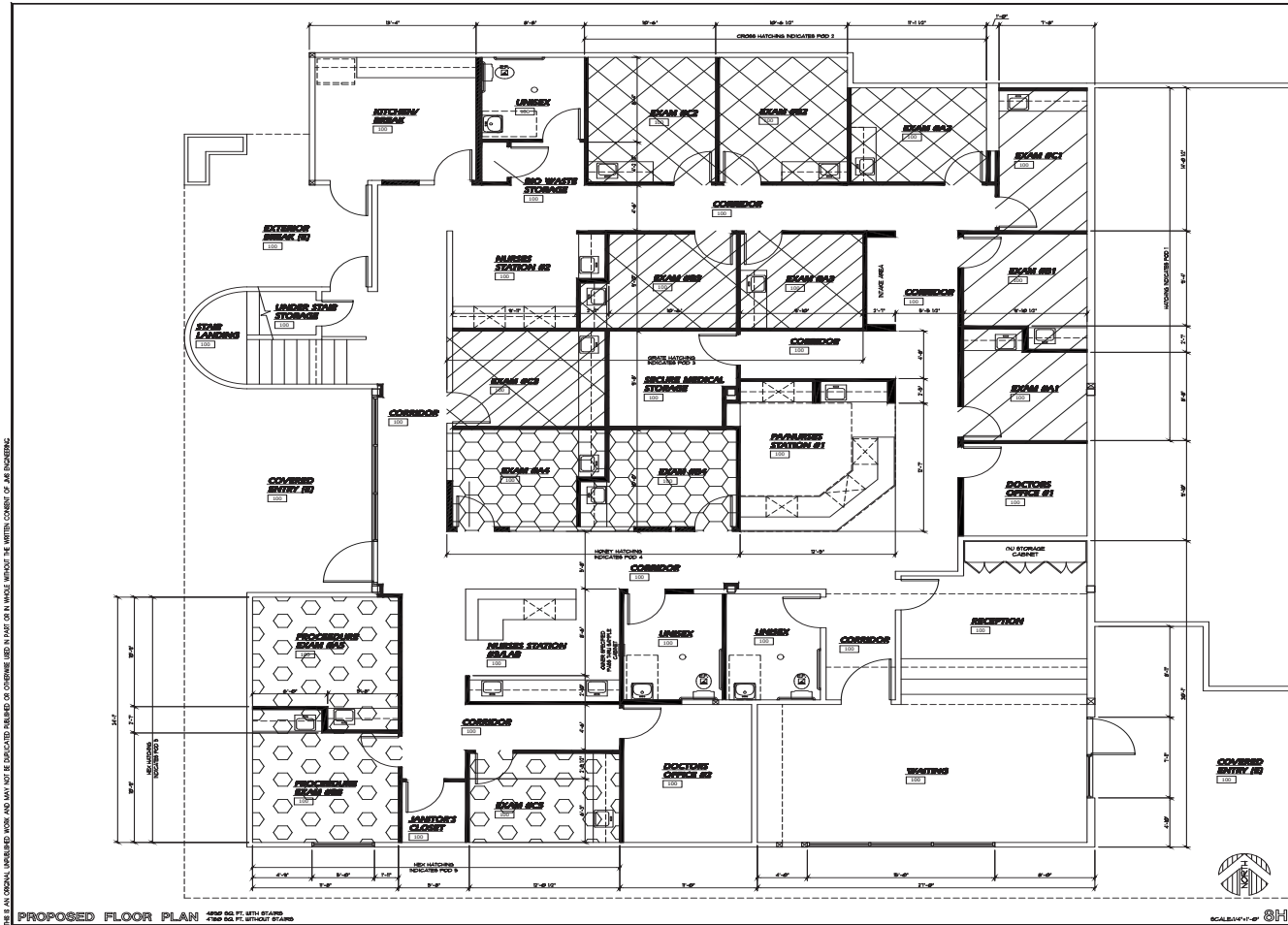
**310-382-7539**

[Pelin@passmedmgmt.com](mailto:Pelin@passmedmgmt.com)

CA BRE #02210768

# 137 S Aspen Ct. - Suite A | Visalia, CA

## FLOOR PLAN - Suite A



PLEASE NOTE: ALL INFORMATION AND REPRESENTATION MADE HEREIN, WHILE NOT GUARANTEED, HAVE BEEN SECURED FROM SOURCES WE BELIEVE TO BE RELIABLE, HOWEVER, THEY ARE NOT WARRANTED AND ARE SUBJECT TO CHANGE WITHOUT NOTICE.