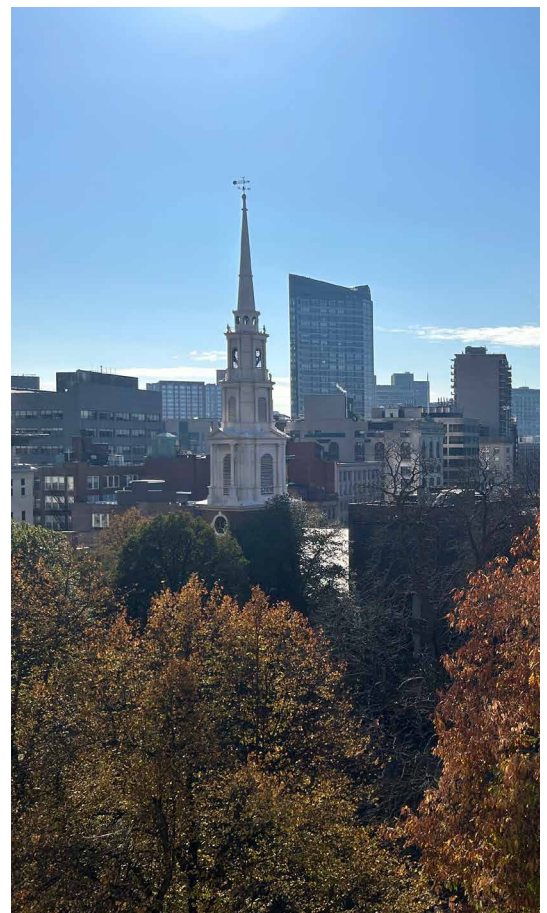
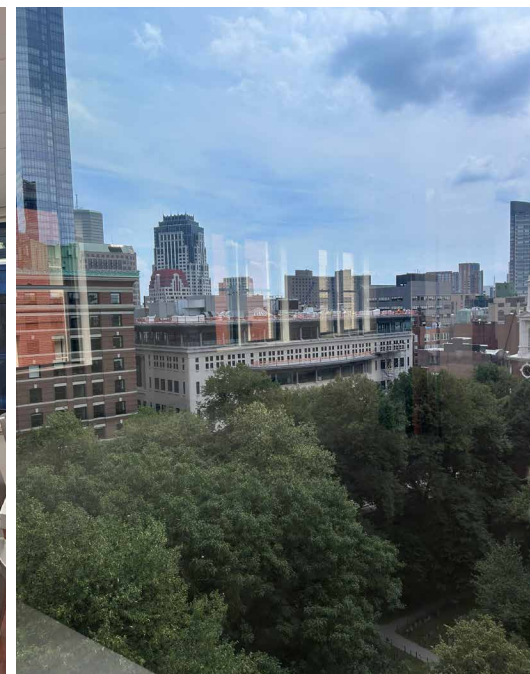
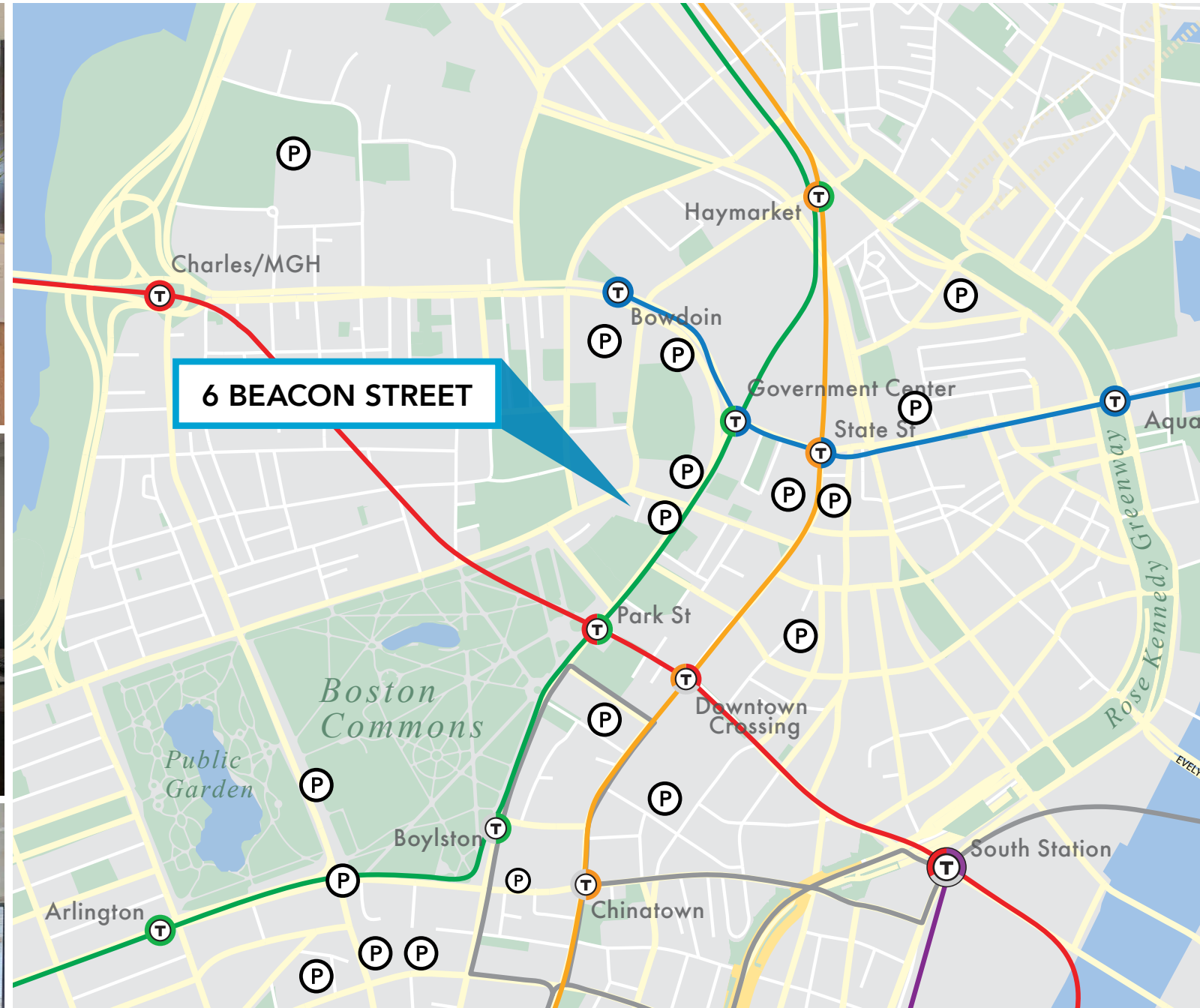
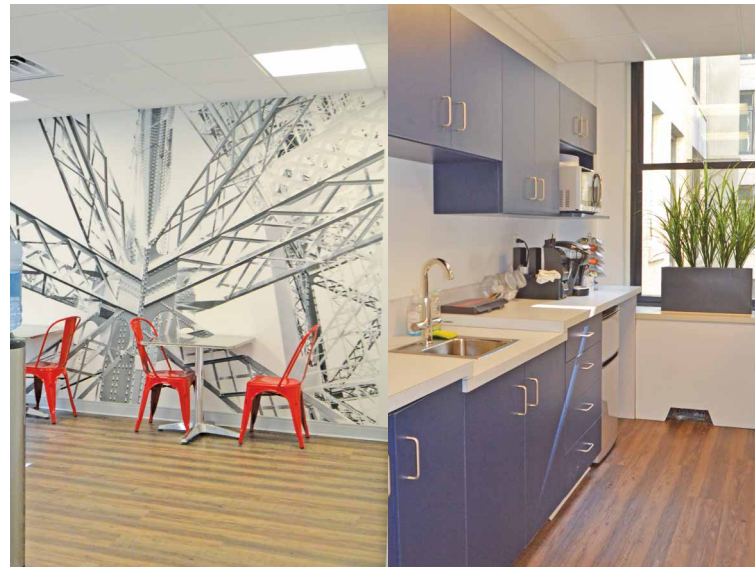


6 BEACON STREET



Boston Realty Advisors is pleased to present **692 – 3,650 RSF** for lease at 6 Beacon Street. Located near Boston's historic State House and Commons, this 90,924 square foot, 11-story office building overlooks the Boston Common and is only steps away from countless amenities such as retail, dining, public transportation, parking and gyms.

The property is owned and managed by Six Beacon, LLC. The same family that has owned the property since 1963 with tremendous pride of ownership. Ownership has completed a multi-million dollar renovation from the street to the suites.



SPECIFICATIONS

- On-site property management
- Lobby Attendant after hours
- Convenient to public transportation, including commuter rail at South Station, and the Red, Green & Orange T Lines at Downtown Crossing
- Steps to several parking garages and area amenities including the XV Beacon and Omni Parker House Hotels, Boston Sports and Beacon Hill Athletic Club, Boston Common Park, CVS, Super Walgreens, Banks, Government buildings, Starbucks, Moo, Number 9 Park and Carrie Nation Restaurants and a wide variety of other eateries

AMENITIES



Available Space

5TH Floor: 1,288 RSF
Available: June 1, 2025

9TH Floor: 692 RSF

10TH Floor: 3,650 RSF
Available: April 1, 2025



Building Size

90,924 SF on 11 Floors



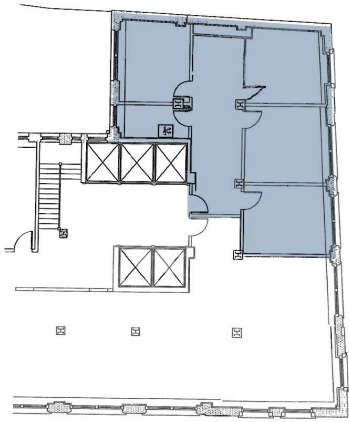
Lease Term

Negotiable

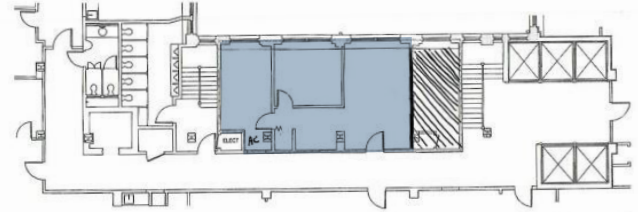
FLOOR PLAN

SUITE 500 | 1,288 RSF

AVAILABLE: JUNE 1, 2025

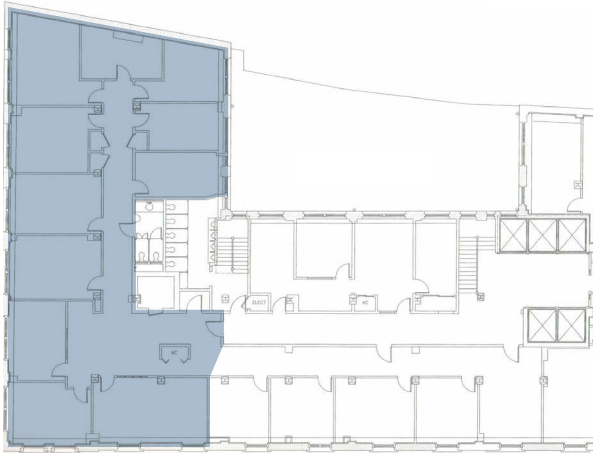


9TH FLOOR | 692 RSF



SUITE 1020 | 3,650 RSF

AVAILABLE: APRIL 1, 2025



BONNY L. DOORAKIAN
Managing Director & Partner
617.850.9655
bdoorakian@bradvisors.com



136 Newbury Street | 4th Floor | Boston, MA 02116 | 617.375.7900 | BRAdvisors.com

© Copyright Boston Realty Advisors. All rights reserved. The information contained here has been obtained through sources deemed reliable but cannot be guaranteed as to its accuracy. Any information of special interest should be obtained through independent verification.