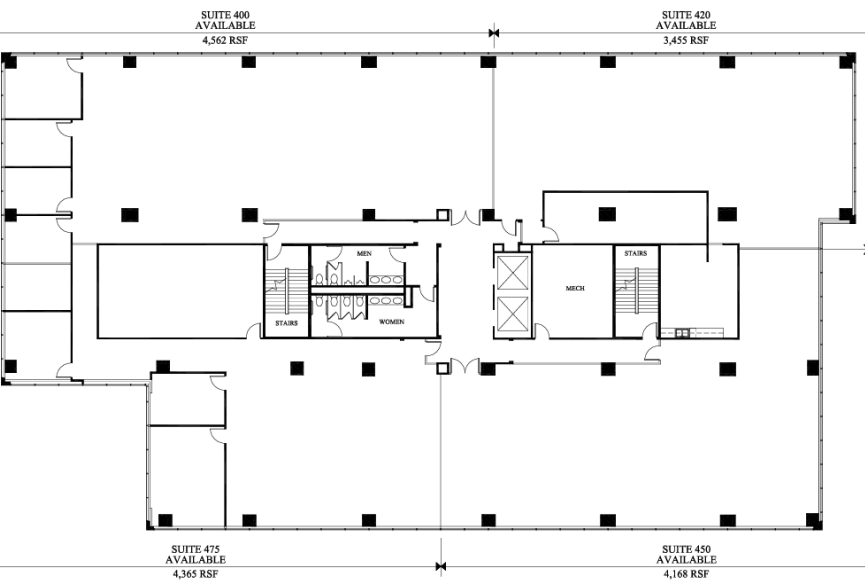


# ONE VALLEY VIEW PLACE

# OFFICE SPACE

*Prime Locations, Short  
Terms available!*

## FOR RENT



**ONE VALLEY VIEW PLACE**  
2350 VALLEY VIEW LANE, FARMERS BRANCH, TEXAS  
4TH FLOOR



*We offer premium  
office spaces tailored to  
meet the needs of your  
growing company.*

6 & 9 month terms available  
on furnished and unfurnished  
move in ready suites.



## CONTACT US:

Contact us now to schedule a tour or  
learn more about our available options

LANDMARK LEGACY REALTY

Phone: 469-531-7624

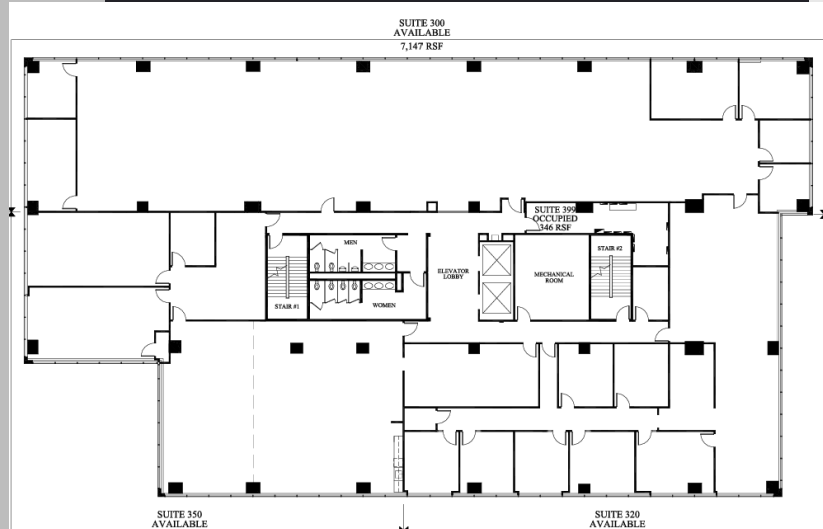
Email: [DIANA.PHAM@LMKRES.COM](mailto:DIANA.PHAM@LMKRES.COM)

# OFFICE SPACE

FOR RENT



10 % Broker Commission  
promotion on minimum 12  
month contracts signed in  
2024.



ONE VALLEY VIEW PLACE  
2350 VALLEY VIEW LANE, FARMERS BRANCH, TEXAS  
3RD FLOOR

## CONTACT US:

Contact us now to schedule a tour or  
learn more about our available options

LANDMARK LEGACY REALTY

Phone: 469-531-7624

Email: [DIANA.PHAM@LMKRES.COM](mailto:DIANA.PHAM@LMKRES.COM)