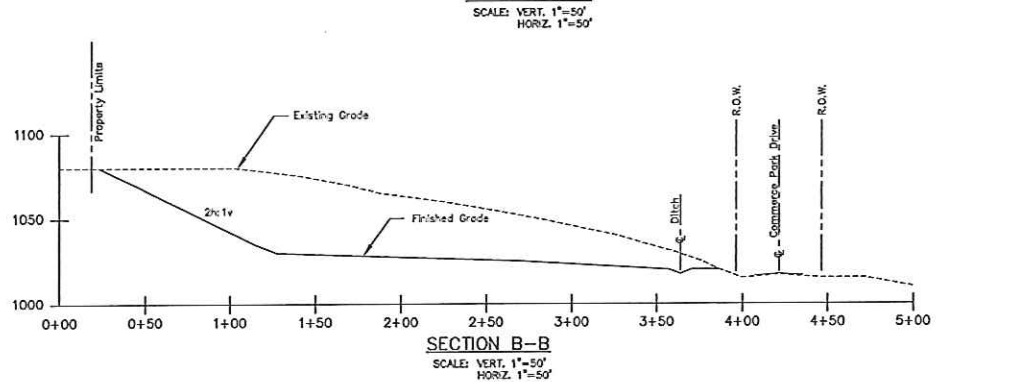
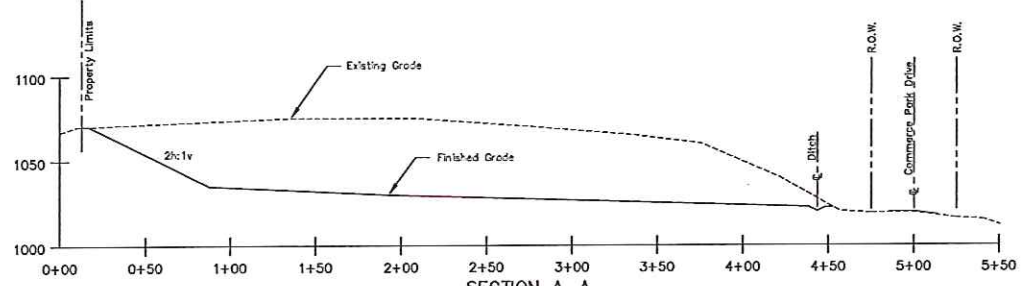
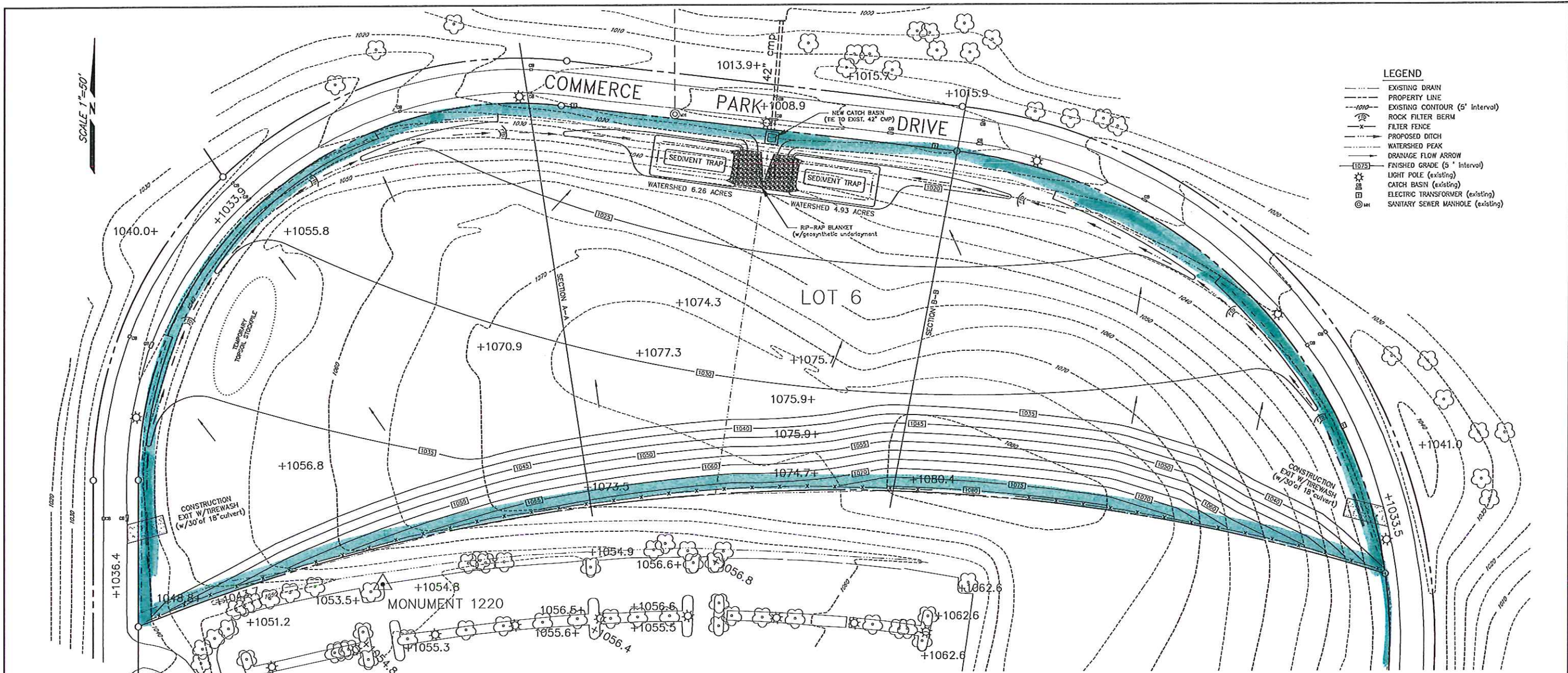


SCALE 1"=50'

- LEGEND**
- EXISTING DRAIN
 - - - PROPERTY LINE
 - - - EXISTING CONTOUR (5' interval)
 - ROCK FILTER BERM
 - x-x- FILTER FENCE
 - - - PROPOSED DITCH
 - WATERSHED PEAK
 - DRAINAGE FLOW ARROW
 - FINISHED GRADE (5' interval)
 - ☆ LIGHT POLE (existing)
 - ⊕ CATCH BASIN (existing)
 - ⊕ ELECTRIC TRANSFORMER (existing)
 - ⊕ SANITARY SEWER MANHOLE (existing)



- NOTES**
1. PRIOR TO CONSTRUCTION START-UP SEDIMENT CONTROL DEVICES SHALL BE INSTALLED TO CONTROL SURFACE RUN-OFF. SEDIMENT CONTROL DEVICES SHALL INCLUDE, BUT NOT LIMITED TO FILTER FABRIC FENCING, STAKED HAY BALES, ROCK CHECK DAMS AND VEGETATIVE WINDROWS. SEDIMENT CONTROL PLANS SHALL BE APPROVED BY THE ENGINEER. STATE AND LOCAL EROSION CONTROL REGULATIONS WILL APPLY.
 2. TOPSOIL SHALL BE STRIPPED AND STOCKPILED FOR REDISTRIBUTION OVER THE PROJECT AREA AS REQUIRED. ALL DISTURBED AREAS SHALL BE FERTILIZED, SEEDING, AND MULCHED WITH AN APPROVED REVEGETATIVE MIXTURE.
 3. THE GRADES SHOWN REPRESENT THE DESIGN INTENT. ALL AREAS WITHIN THE PROJECT AREA SHALL BE GRADED TO ACHIEVE POSITIVE DRAINAGE. NO PONDING OR STANDING WATER WILL BE PERMITTED.
 4. ALL PROPOSED DRAINAGE DITCHES AND SPLASH PADS ARE TO BE CONSTRUCTED WITH 6"x12" LIMESTONE R.P.-RAP.
 5. EXISTING CONTOURS SHOWN 5' INTERVAL. PROPOSED FINISHED GRADE CONTOURS SHOWN AT 5' INTERVALS.
 6. LOCATIONS OF ALL UTILITIES AND UNDERGROUND STRUCTURES SHOWN ARE APPROXIMATE AND THOSE SHOWN ARE NOT NECESSARILY ALL OF THE EXISTING STRUCTURES. ALL LOCAL UTILITIES SHALL BE CONTACTED PRIOR TO CONSTRUCTION:
TENNESSEE ONE CALL 1-800-351-1111
 7. TARE, INC. SHALL NOT BE RESPONSIBLE FOR CONSTRUCTION MEANS, METHODS, TECHNIQUES OR PROCEDURES UTILIZED BY THE CONTRACTOR, NOR FOR THE SAFETY OF THE PUBLIC OR CONTRACTOR'S EMPLOYEES, OR FOR THE FAILURE OF THE CONTRACTOR TO CARRY OUT THE WORK IN ACCORDANCE WITH THE PERMIT DOCUMENTS.
 8. STORM SEWER AREA DRAIN INLET STRUCTURES ARE TO BE PROTECTED FROM ERODING MATERIAL WITH HAY BALES OR APPROVED EROSION CONTROL AS DIRECTED BY THE ENGINEER.
 9. PROPERTY LINES WERE NOT SURVEYED BY TARE, INC. PROPERTY LINE DATA SUPPLIED BY THE OWNERS.

**SITE GRADING
and
STORM WATER POLLUTION PREVENTION PLAN**
for
CHESAPEAKE PARK, LOT 6
COMMERCE PARK DRIVE, OAK RIDGE, TENNESSEE

CLAIBORNE HAULING, LLC
Knoxville, Tennessee

