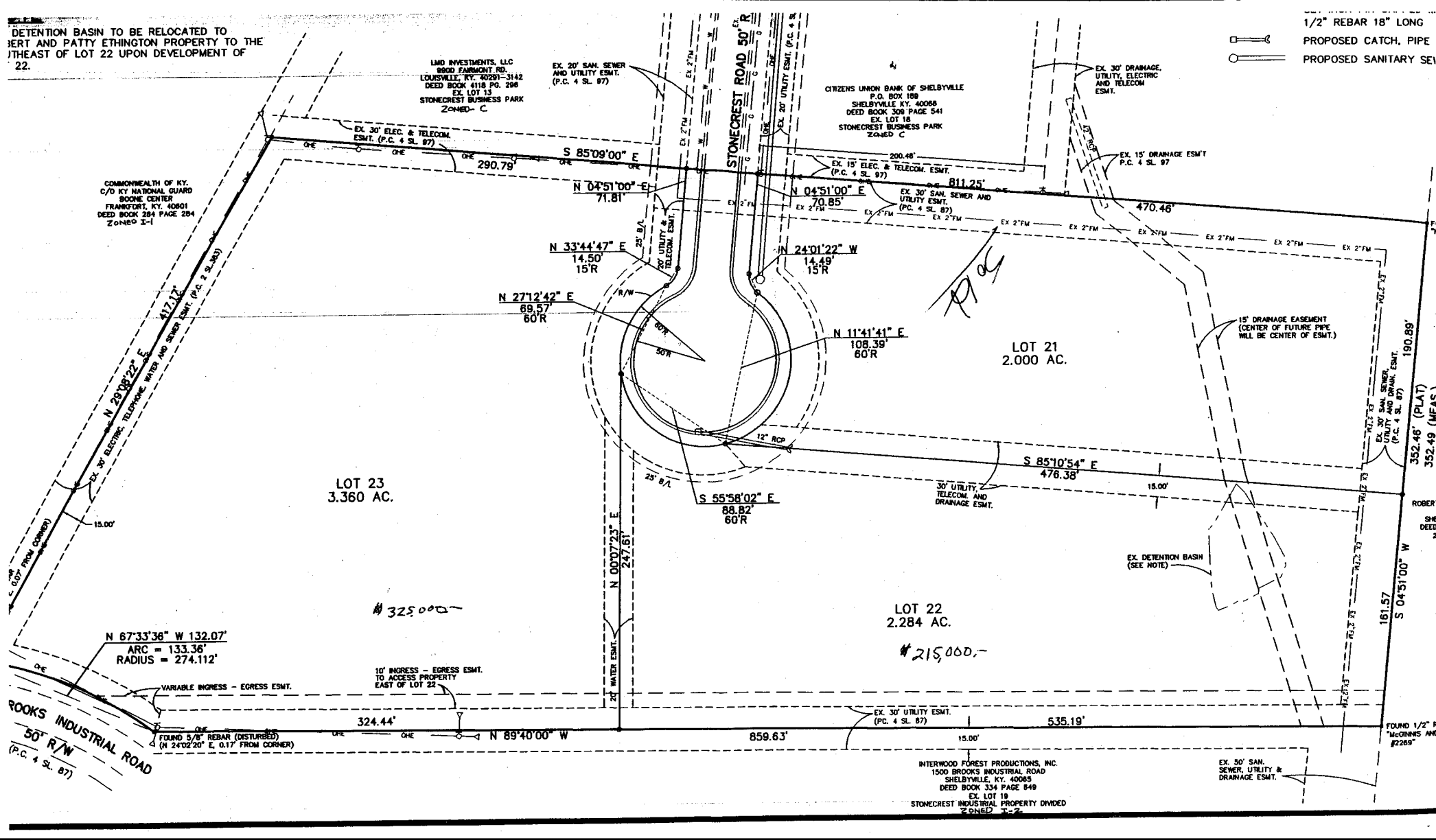


RETENTION BASIN TO BE RELOCATED TO BERT AND PATTY ETHINGTON PROPERTY TO THE NORTHEAST OF LOT 22 UPON DEVELOPMENT OF LOT 22.

1/2" REBAR 18" LONG
 PROPOSED CATCH PIPE
 PROPOSED SANITARY SEWER



COMMONWEALTH OF KY.
 C/O KY NATIONAL GUARD
 BOONE CENTER
 FRANKFORD, KY. 40601
 DEED BOOK 284 PAGE 284
 ZONED Z-1

LMD INVESTMENTS, LLC
 9000 FARMINGTON RD.
 LOUISVILLE, KY. 40291-3142
 DEED BOOK 4118 PG. 298
 EX. LOT 13
 STONECREST BUSINESS PARK
 ZONED-C

CITIZENS UNION BANK OF SHELBYVILLE
 P.O. BOX 188
 SHELBYVILLE KY. 40088
 DEED BOOK 304 PAGE 541
 EX. LOT 18
 STONECREST BUSINESS PARK
 ZONED C

INTERWOOD FOREST PRODUCTIONS, INC.
 1500 BROOKS INDUSTRIAL ROAD
 SHELBYVILLE, KY. 40085
 DEED BOOK 334 PAGE 849
 EX. LOT 19
 STONECREST INDUSTRIAL PROPERTY DIVDED
 ZONED T-2

LOT 23
 3.360 AC.

LOT 22
 2.284 AC.

LOT 21
 2.000 AC.

325,000

215,000

EX. DETENTION BASIN
 (SEE NOTE)

EX. 50' SAN.
 SEWER, UTILITY &
 DRAINAGE ESMT.

FOUND 1/2" R
 McGINNIS AND
 #2269"

ROOKS INDUSTRIAL ROAD
 50' R/W
 (P.C. 4 SL. 87)

N 29°38'22" E
 417.12'
 EX. 30' ELECTRIC, TELEPHONE, WATER AND SEWER ESMT. (P.C. 2 SL. 383)

15.00'
 EX. 30' FROM CORNER

N 67°33'36" W 132.07'
 ARC = 133.36'
 RADIUS = 274.112'

VARIABLE INGRESS - EGRESS ESMT.

10' INGRESS - EGRESS ESMT.
 TO ACCESS PROPERTY
 EAST OF LOT 22

FOUND 5/8" REBAR (DISTURBED)
 (N 24°02'20" E, 0.17' FROM CORNER)

15' DRAINAGE EASEMENT
 (CENTER OF FUTURE PIPE
 WILL BE CENTER OF ESMT.)

EX. 30' SAN. SEWER,
 UTILITY AND DRAINAGE ESMT.
 (P.C. 4 SL. 87)

ROBER
 SHE
 DEE

181.57
 S 04°31'00" W

352.46' (PLAT)
 352.49' (MEAS)

190.89'

190.89'

190.89'

190.89'

190.89'

190.89'

190.89'

190.89'

190.89'

190.89'

190.89'

190.89'

190.89'

190.89'

190.89'

190.89'

190.89'

190.89'

190.89'

190.89'

190.89'

190.89'

190.89'

190.89'

190.89'

190.89'

190.89'

190.89'

190.89'

190.89'

190.89'

190.89'

190.89'

190.89'

190.89'

190.89'

190.89'

190.89'

190.89'

190.89'

190.89'

190.89'

190.89'

190.89'

190.89'

190.89'

190.89'

190.89'

190.89'

190.89'

190.89'

190.89'

190.89'

190.89'