

LAKE POINT COMMERCE CENTER

FOUNDRY
COMMERCIAL

1,800 SF - 6,740 SF
AVAILABLE

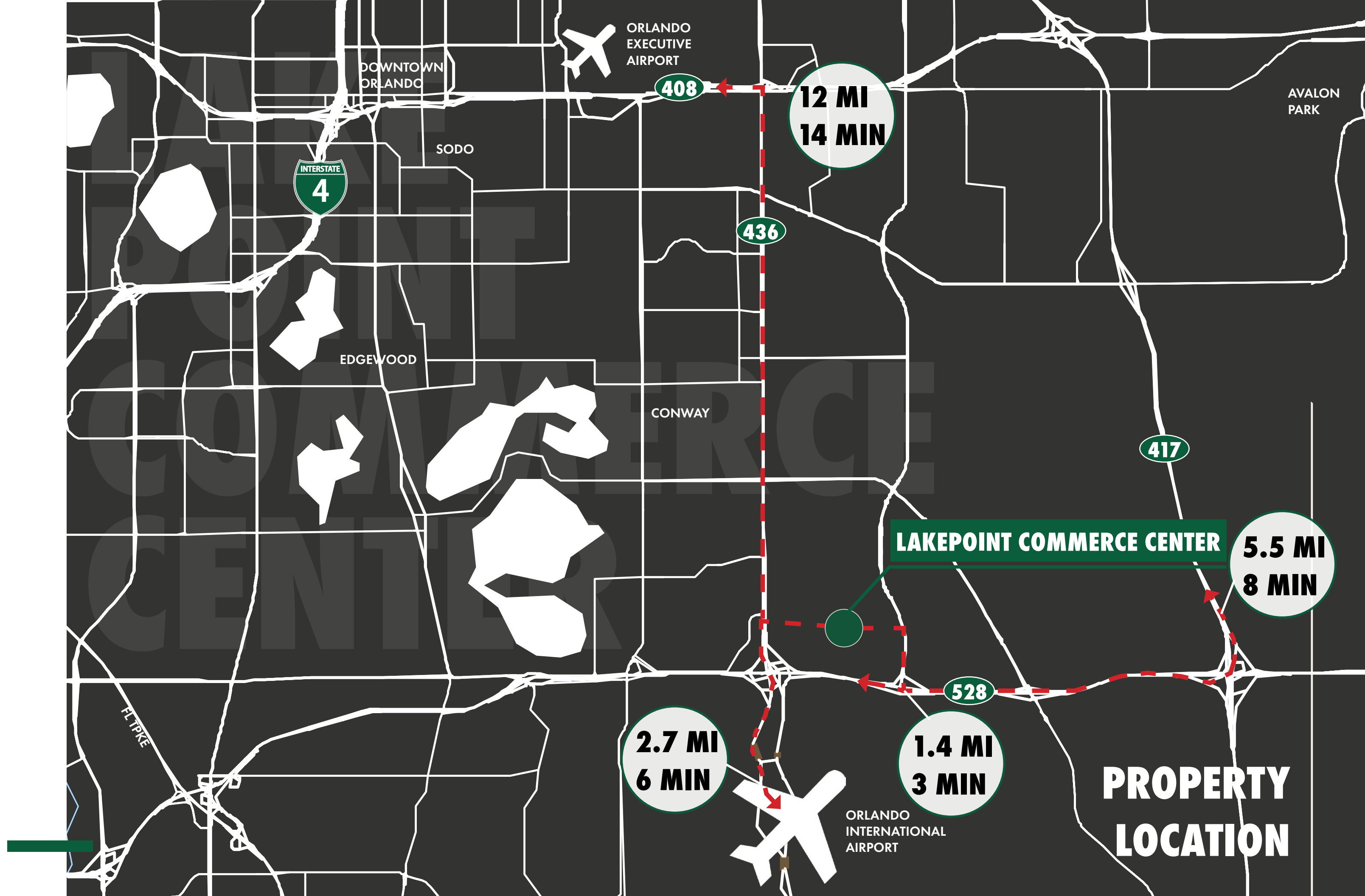
LAKE POINT COMMERCE CENTER

PROPERTY FEATURES

ADDRESS:	6200 - 6360 Hazeltine National Dr, Orlando, FL 32822
SF AVAILABLE:	1,800 SF - 6,740 SF
YEAR BUILT:	1985
CLEAR HEIGHT:	16'
PARKING:	3.24/1,000
ZONING:	I-P/AN - Industrial Park
AVAILABLE:	Immediately
RATE:	\$18.75/PSF NNN
PROFESSIONAL SECURE ENVIRONMENT:	Office/Warehouse space in a professional park setting
DOCK DOORS:	Combination of dock high & grade level doors



PROPERTY FEATURES



ORLANDO
EXECUTIVE
AIRPORT

408

12 MI
14 MIN

AVALON
PARK

436

INTERSTATE
4

SODO

EDGEWOOD

CONWAY

417

LAKEPOINT COMMERCE CENTER

5.5 MI
8 MIN

528

2.7 MI
6 MIN

1.4 MI
3 MIN

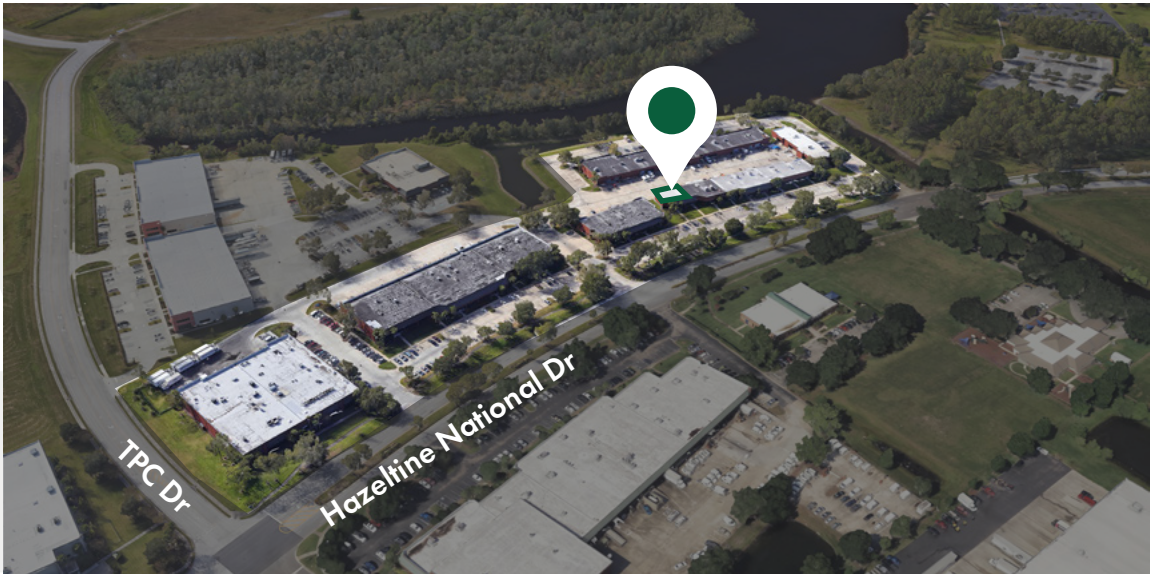
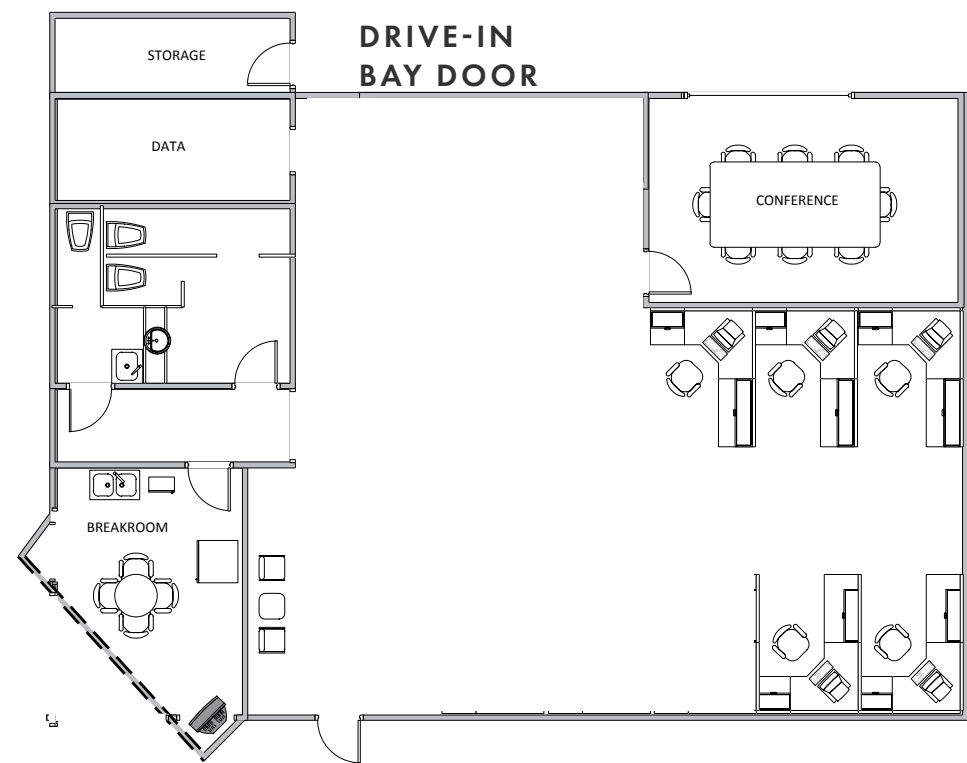
ORLANDO
INTERNATIONAL
AIRPORT

PROPERTY
LOCATION

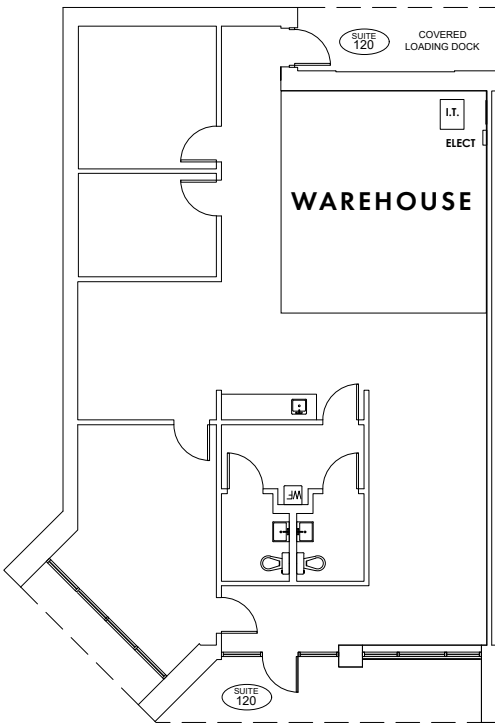
FL TPKE

FLOOR PLANS

BUILDING 6250 | SUITE 116 - 2,606 SF



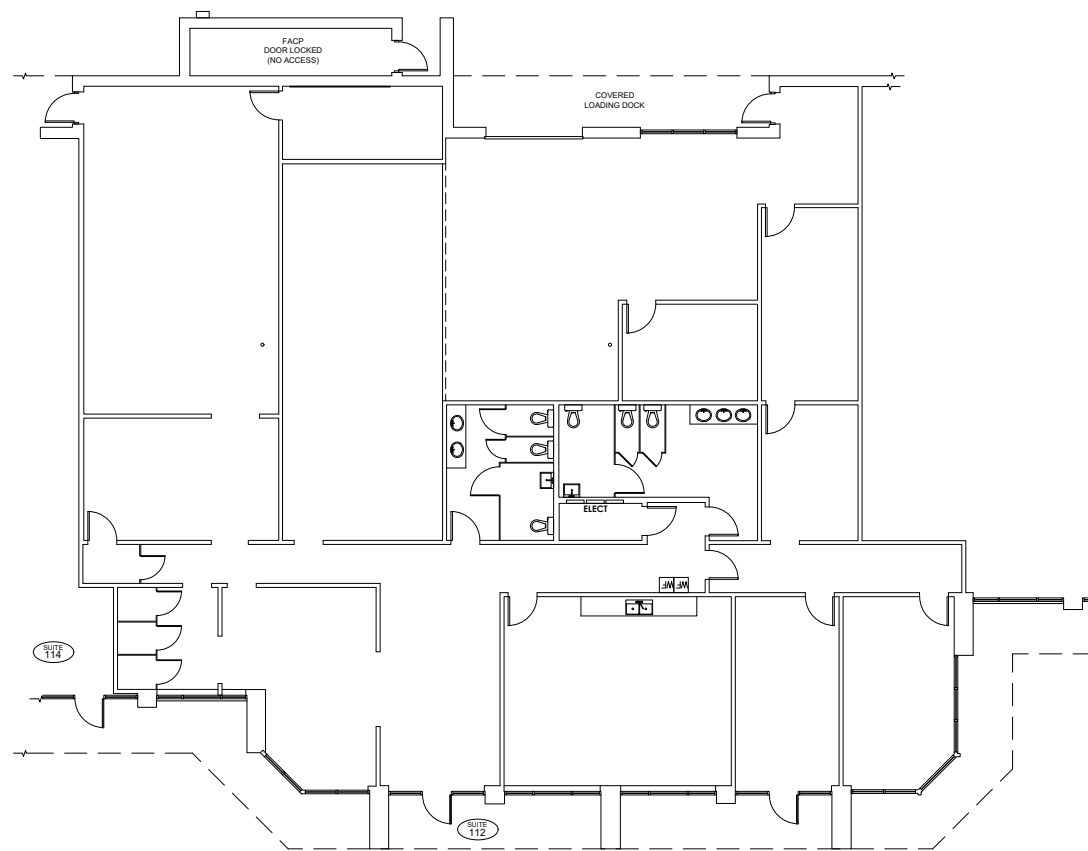
BUILDING 6220 | SUITE 120 - 2,145 SF



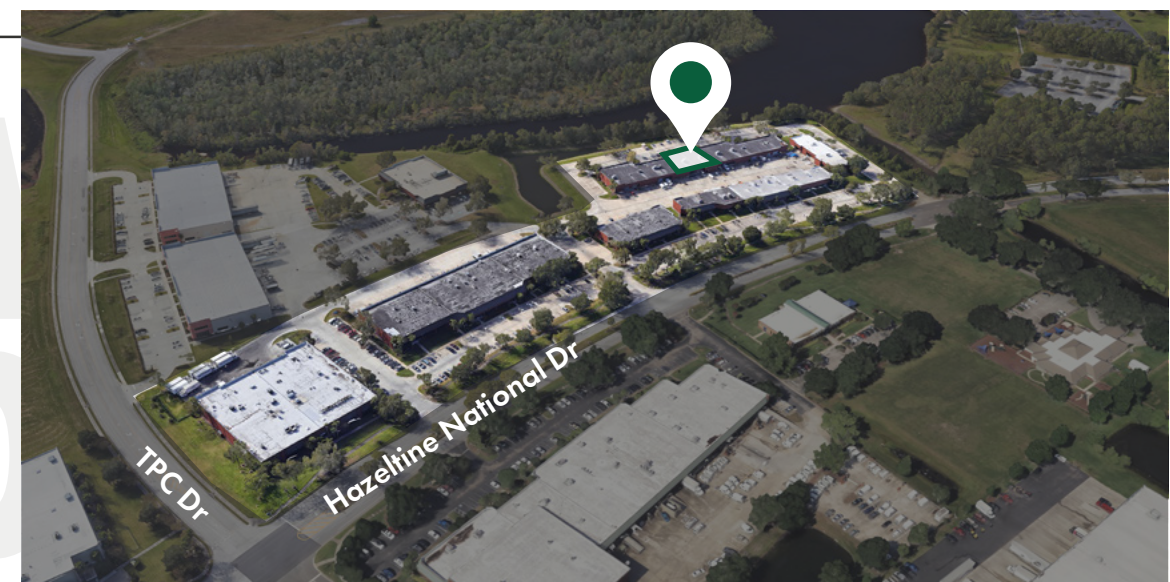
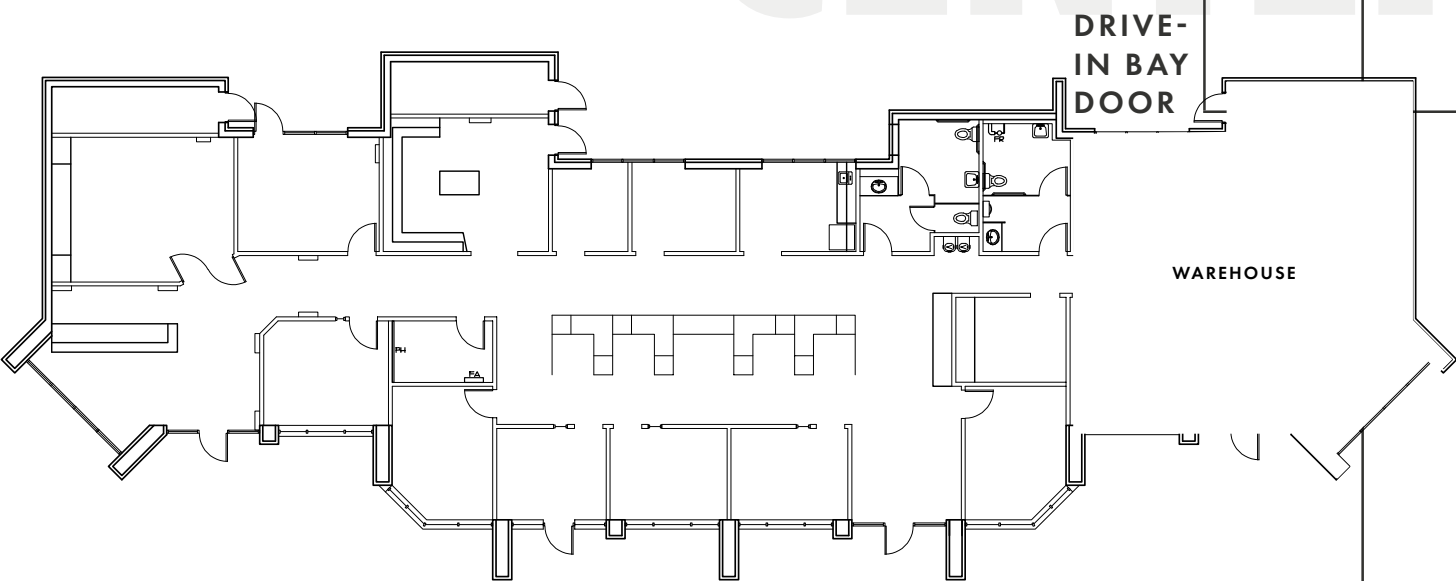
FLOOR
PLANS

FLOOR PLANS

BUILDING 6220 | SUITE 112 - 6,459 SF

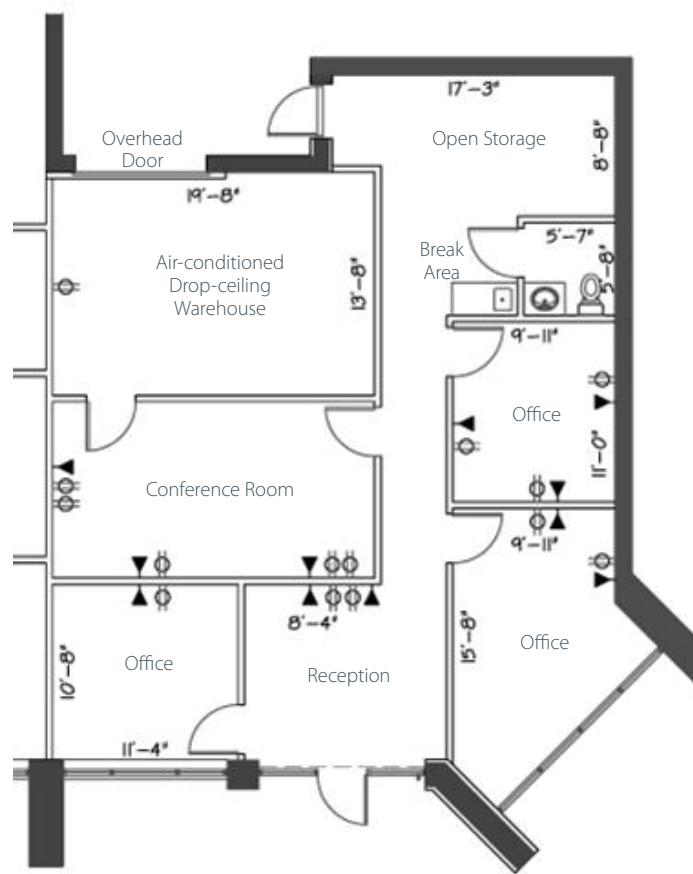


BUILDING 6200 | SUITE 100 - 6,740 SF



FLOOR PLANS

BUILDING 6250 | SUITE 100 - 1,800 SF



PROPERTY
PHOTOS

CONTACTS

FOUNDRY
COMMERCIAL

JOHN PIETKIEWICZ

407.619.7342

john.pietkiewicz@foundrycommercial.com

NICK HEEB

772.631.1258

nick.heeb@foundrycommercial.com

CONTACT
OUR TEAM

**TOUR
TODAY**