

FENLEY OFFICE PARK-C

4969 U.S. 42
LOUISVILLE, KY 40222



EXECUTIVE SUMMARY



PROPERTY INFO



AERIAL MAP



PROPERTY IMAGES



FLOOR PLANS



FOR MORE INFO



FENLEY OFFICE PARK-C

4969 U.S. 42
LOUISVILLE, KY 40222

EXECUTIVE SUMMARY



EXECUTIVE SUMMARY



PROPERTY INFO



AERIAL MAP



PROPERTY IMAGES



FLOOR PLANS



FOR MORE INFO

A well-located Class A office property, the **Fenley Office Park-C** office building is 100% leased with a diverse and professional tenant roster. Situated in some of the highest income demographic neighborhoods in Jefferson County, **Fenley Office Park-C** is surrounded by abundant retail and service amenities.

FENLEY OFFICE PARK-C

4969 U.S. 42
LOUISVILLE, KY 40222

PROPERTY INFO



Street Address: 4969 U.S. 42
Louisville, Kentucky 40222

Total Site Area: 4.176 Acres

Gross Building Size: 78,017 sf

Parking: 193 Surface Lot Spaces

Year Completed: 2001

Roof: Built-up coal tar pitch roof system over tapered insulation and metal decking on bar joists. New roof in 2020.

Exterior: Brick masonry veneer, continuous aluminum framed window system with high performance insulated solar tint glass.

Elevators: One hydraulic elevator, 2,500-pound capacity.

 EXECUTIVE SUMMARY

 PROPERTY INFO

 AERIAL MAP

 PROPERTY IMAGES

 FLOOR PLANS

 FOR MORE INFO



FENLEY OFFICE PARK-C

4969 U.S. 42
LOUISVILLE, KY 40222

AERIAL MAP



EXECUTIVE SUMMARY



PROPERTY INFO



AERIAL MAP



PROPERTY IMAGES



FLOOR PLANS



FOR MORE INFO



FENLEY OFFICE PARK-C

PROPERTY IMAGES



4969 U.S. 42
LOUISVILLE, KY 40222



EXECUTIVE SUMMARY



PROPERTY INFO



AERIAL MAP



PROPERTY IMAGES



FLOOR PLANS



FOR MORE INFO



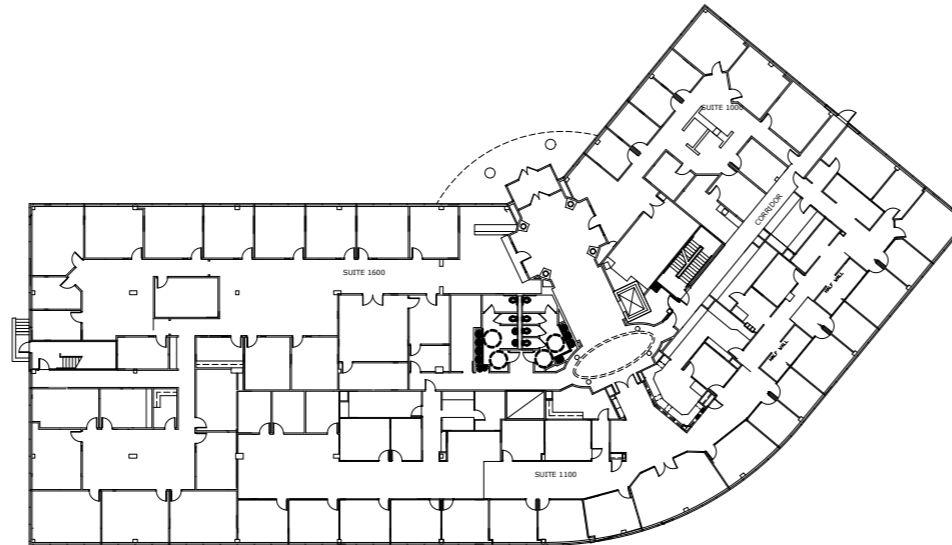
FENLEY OFFICE PARK-C

4969 U.S. 42
LOUISVILLE, KY 40222

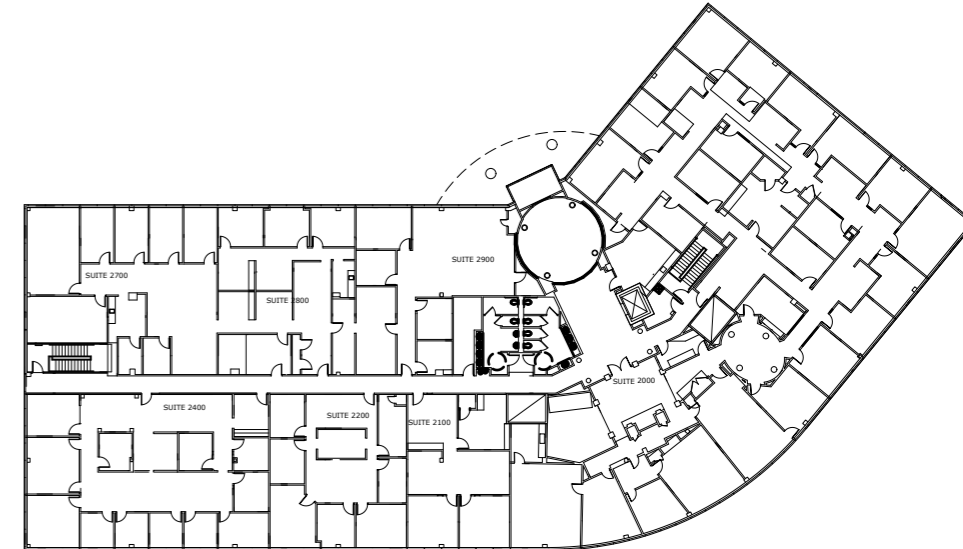
FLOOR PLAN



FIRST FLOOR



SECOND FLOOR



LOWER LEVEL



EXECUTIVE SUMMARY



PROPERTY INFO



AERIAL MAP



PROPERTY IMAGES



FLOOR PLANS



FOR MORE INFO

FENLEY OFFICE PARK-C

4969 U.S. 42
LOUISVILLE, KY 40222

FOR MORE INFORMATION



EXECUTIVE SUMMARY



PROPERTY INFO



AERIAL MAP



PROPERTY IMAGES



FLOOR PLANS



FOR MORE INFO



For more information, please contact:

CRAIG COLLINS
Senior Director
502 719 3221
ccollins@commercialkentucky.com

AUSTIN G. ENGLISH, MBA
Associate
502 719 3258
aenglish@commercialkentucky.com

333 E. Main Street, Suite 510
Louisville, KY 40202
phone: +502 589 5150
www.commercialkentucky.com