

# Calabasas Square

23622 Calabasas Road, Calabasas, CA

Medical & Office Space



## MEDICAL & OFFICE SPACE Available For Lease



**PACIFIC PARTNERS**  
COMMERCIAL, INC.

23901 Calabasas Rd., Suite 2024  
Calabasas, CA 91302  
Office 818.862.2848

4/2/2026

**Brian Forster**

President  
Direct: 818.8862.2774  
[Brian@pacificpartnerscre.com](mailto:Brian@pacificpartnerscre.com)  
CA DRE: 01093508

**Michelle Buckner**

Vice President  
Direct: 818.284.4020  
[michelle@pacificpartnerscre.com](mailto:michelle@pacificpartnerscre.com)  
CA DRE: 01957319

**Lisa Shirliff**

Investment Sales & Leasing  
Direct: 818.878.8853  
[Lisa@pacificpartnerscre.com](mailto:Lisa@pacificpartnerscre.com)  
CA DRE: 01891301

The information herein has been furnished from sources which we deem reliable, but has not been verified by Pacific Partners Commercial, Inc. or its agents and for which we assume no liability. This marketing material is to be used for conceptual purposes only. All measurements and numerical data are approximate and to be verified by the prospective buyer.

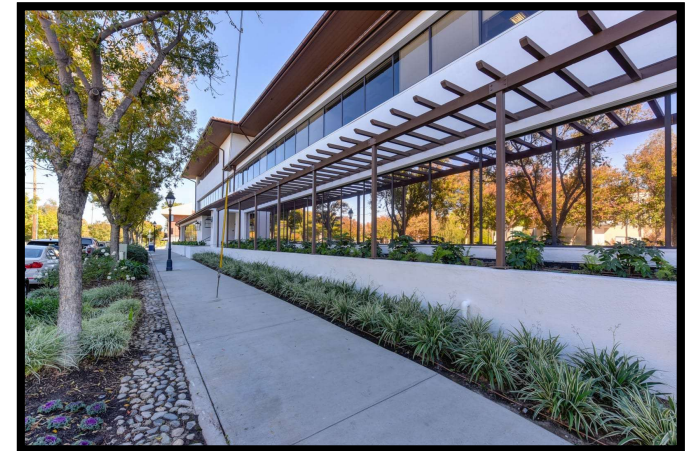
# Calabasas Square



## Property Photos

### PROPERTY HIGHLIGHTS:

- Superb Downtown Calabasas Location
- High Profile, Beautifully Renovated Buildings
- Immediate Occupancy
- Free Uncovered Tenant Parking & Paid Subterranean Parking
- Free Valet Visitor Parking
- Walking Distance To Many Shops And Restaurants
- Easy Access to 101 Freeway
- On-site Property Management & Engineer



**Brian Forster**

President

Direct: 818.384.1030

[Brian@pacificpartnerscre.com](mailto:Brian@pacificpartnerscre.com)

CA DRE: 01093508

**Michelle Buckner**

Vice President

Direct: 818.284.4020

[michelle@pacificpartnerscre.com](mailto:michelle@pacificpartnerscre.com)

CA DRE: 01957319

**Lisa Shirliff**

Investment Sales & Leasing

Direct: 818.878.8853

[Lisa@pacificpartnerscre.com](mailto:Lisa@pacificpartnerscre.com)

CA DRE: 01891301

PACIFIC PARTNERS COMMERCIAL

23901 Calabasas Rd., Suite 2024

Calabasas, CA 91302

Office 818.862.2848

# Calabasas Square



## Availability & Rates

### 23622 Calabasas Road

| <u>Suite</u> | <u>Available</u> | <u>Approx. SF</u> | <u>Rate / SF</u> |
|--------------|------------------|-------------------|------------------|
| 252          | Now              | 431 RSF           | \$4.95 FSG       |
| 260          | Now              | 1,023 RSF         | \$3.55 FSG       |
| 301          | Now              | 1,560 RSF         | \$3.55 FSG       |

### 23632 Calabasas Road

| <u>Suite</u> | <u>Available</u> | <u>Approx. SF</u> | <u>Rate / SF</u> |
|--------------|------------------|-------------------|------------------|
| 204          | Now              | 1,258 RSF         | \$3.35 FSG       |

**\*\*Medical Use Rate: \$3.95/SF FSG\*\***



**Brian Forster**  
President  
Direct: 818.384-1030  
[Brian@pacificpartnerscre.com](mailto:Brian@pacificpartnerscre.com)  
CA DRE: 01093508

**Michelle Buckner**  
Vice President  
Direct: 818.284.4020  
[michelle@pacificpartnerscre.com](mailto:michelle@pacificpartnerscre.com)  
CA DRE: 01957319

**Lisa Shirliff**  
Investment Sales & Leasing  
Direct: 818.878.8853  
[Lisa@pacificpartnerscre.com](mailto:Lisa@pacificpartnerscre.com)  
CA DRE: 01891301

PACIFIC PARTNERS COMMERCIAL  
23901 Calabasas Rd., Suite 2024  
Calabasas, CA 91302  
Office 818.862.2848

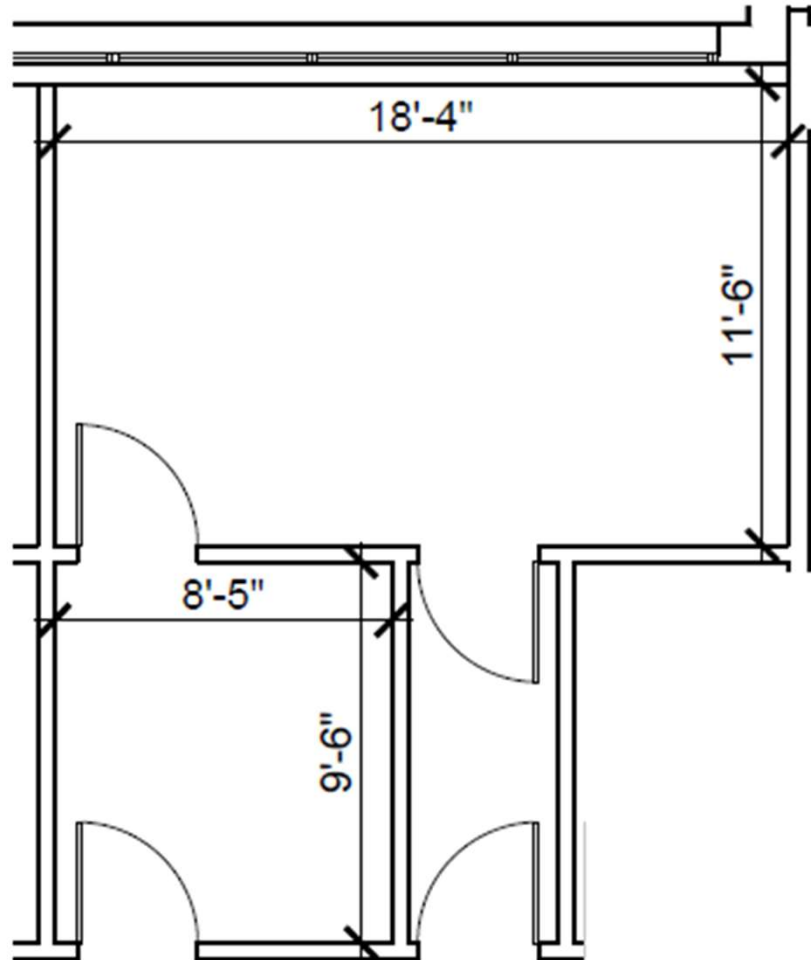
# Calabasas Square

23622 Calabasas Road



## Floor Plans

| Suite # | Square Footage | Description                       |
|---------|----------------|-----------------------------------|
| #252    | 431 RSF        | 1 window office, 1 interior room. |



### Brian Forster

President

Direct: 818.384.1030

[Brian@pacificpartnerscre.com](mailto:Brian@pacificpartnerscre.com)

CA DRE: 01093508

### Michelle Buckner

Vice President

Direct: 818.284.4020

[michelle@pacificpartnerscre.com](mailto:michelle@pacificpartnerscre.com)

CA DRE: 01957319

### Lisa Shirliff

Investment Sales & Leasing

Direct: 818.878.8853

[Lisa@pacificpartnerscre.com](mailto:Lisa@pacificpartnerscre.com)

CA DRE: 01891301

PACIFIC PARTNERS COMMERCIAL

23901 Calabasas Rd., Suite 2024

Calabasas, CA 91302

Office 818.862.2848

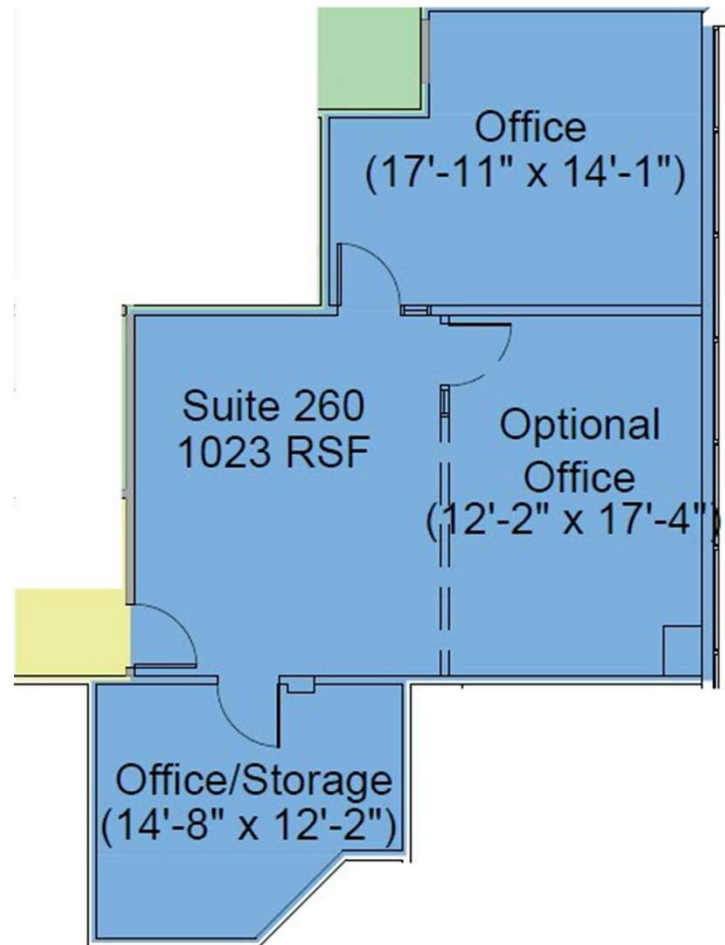
# Calabasas Square

23622 Calabasas Road



## Floor Plans

| Suite # | Square Footage | Description   |
|---------|----------------|---|
| #260    | 1,023 RSF      | 2 window offices, 1 interior offices and storage room |



**Brian Forster**

President

Direct: 818.384.1030

[Brian@pacificpartnerscre.com](mailto:Brian@pacificpartnerscre.com)

CA DRE: 01093508

**Michelle Buckner**

Vice President

Direct: 818.284.4020

[michelle@pacificpartnerscre.com](mailto:michelle@pacificpartnerscre.com)

CA DRE: 01957319

**Lisa Shirliff**

Investment Sales & Leasing

Direct: 818.878.8853

[Lisa@pacificpartnerscre.com](mailto:Lisa@pacificpartnerscre.com)

CA DRE: 01891301

PACIFIC PARTNERS COMMERCIAL

23901 Calabasas Rd., Suite 2024

Calabasas, CA 91302

Office 818.862.2848

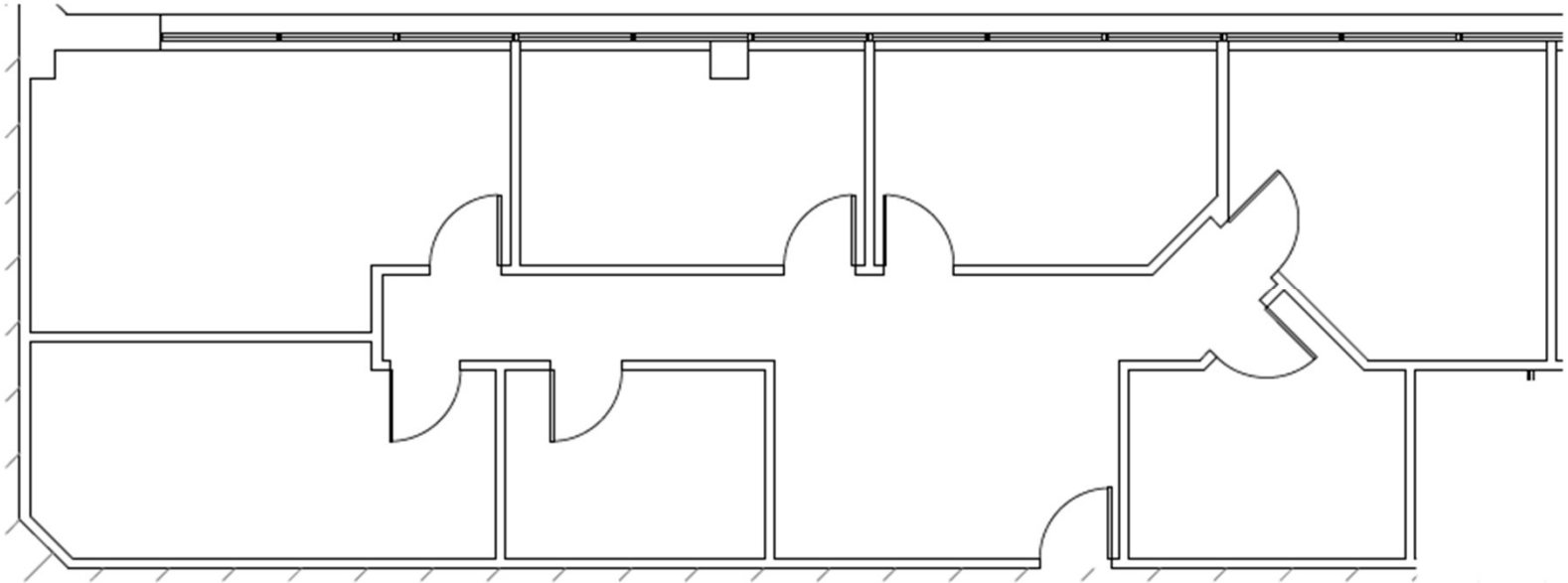
# Calabasas Square

23622 Calabasas Road



## Floor Plans

| Suite # | Square Footage | Description  |
|---------|----------------|--|
| #301    | 1,560 RSF      | 4 window offices, 2 interior offices, break room and open area |



### Brian Forster

President

Direct: 818.384.1030

[Brian@pacificpartnerscre.com](mailto:Brian@pacificpartnerscre.com)

CA DRE: 01093508

### Michelle Buckner

Vice President

Direct: 818.284.4020

[michelle@pacificpartnerscre.com](mailto:michelle@pacificpartnerscre.com)

CA DRE: 01957319

### Lisa Shirliff

Investment Sales & Leasing

Direct: 818.878.8853

[Lisa@pacificpartnerscre.com](mailto:Lisa@pacificpartnerscre.com)

CA DRE: 01891301

PACIFIC PARTNERS COMMERCIAL

23901 Calabasas Rd., Suite 2024

Calabasas, CA 91302

Office 818.862.2848

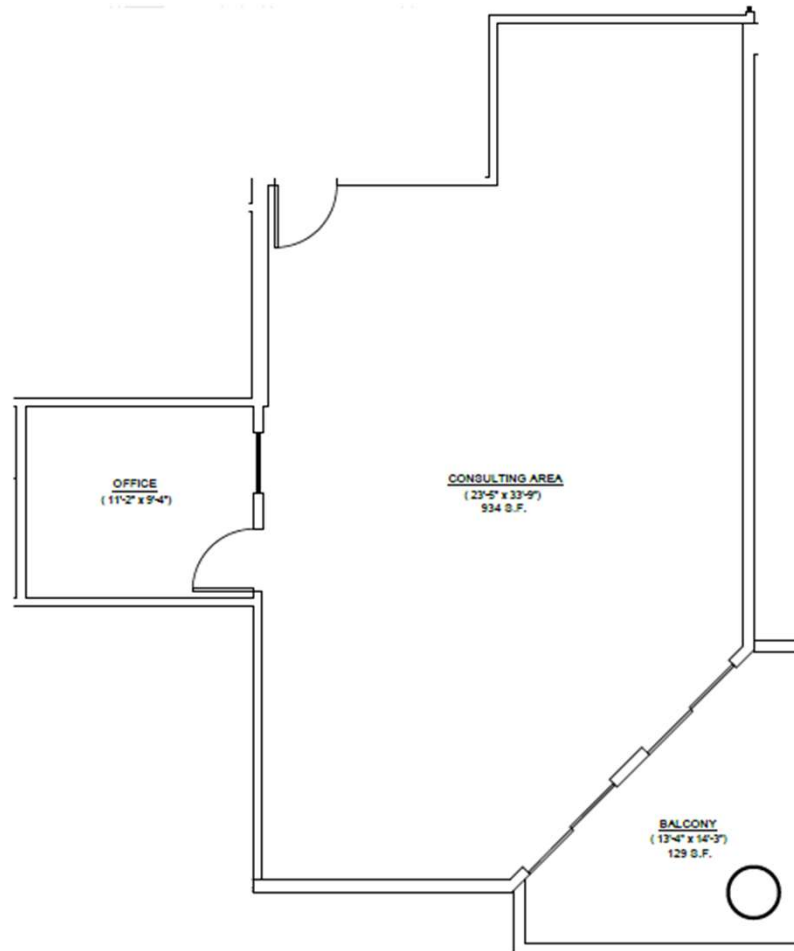
# Calabasas Square

23632 Calabasas Road



## Floor Plans

| Suite # | Square Footage | Description                  |
|---------|----------------|------------------------------|
| #204    | 1,258 RSF      | 1 office, open area, balcony |



**Brian Forster**

President

Direct: 818.384.1030

[Brian@pacificpartnerscre.com](mailto:Brian@pacificpartnerscre.com)

CA DRE: 01093508

**Michelle Buckner**

Vice President

Direct: 818.284.4020

[michelle@pacificpartnerscre.com](mailto:michelle@pacificpartnerscre.com)

CA DRE: 01957319

**Lisa Shirliff**

Investment Sales & Leasing

Direct: 818.878.8853

[Lisa@pacificpartnerscre.com](mailto:Lisa@pacificpartnerscre.com)

CA DRE: 01891301

PACIFIC PARTNERS COMMERCIAL

23901 Calabasas Rd., Suite 2024

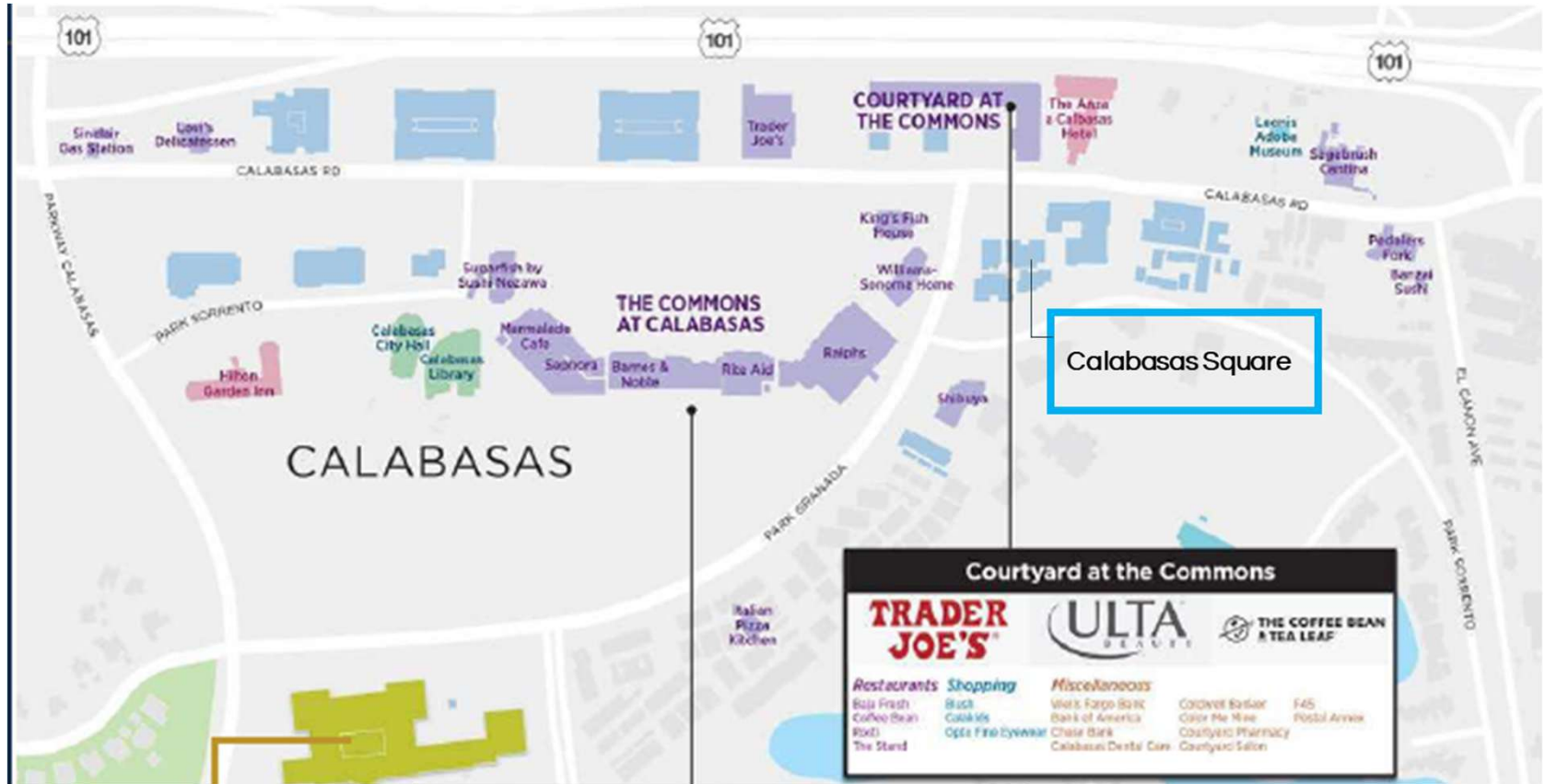
Calabasas, CA 91302

Office 818.862.2848

# Calabasas Square

23622 & 23632 Calabasas Road, CA 91302

## Amenities Overview



**The Commons at Calabasas**

|   |   |  |  |  |
|---|---|--|--|--|
| <b>MARMALADE CAFE</b>   | <b>KING OF BEANS</b>  | <b>TOSCANOVA</b>   | <b>SUGARFISH</b>   | <b>STARBUCKS</b>   |
| <b>lululemon</b>  | <b>elysewalker</b>  | <b>SEPHORA</b>   | <b>WILLIAMS SONOMA</b>   | <b>drybar</b>  |
| <b>Restaurants:</b><br>Barnes & Noble Cafe<br>Ebbey's Gourmet Heartbeats<br>Crossroads Kitchen Calabasas<br>Crumbi Cookies<br>Fresh Straws<br>Jani's Sekonid Ice Cream<br>Kings Park House<br>Lola Land Kiki Cafe | <b>Marmalade Cafe</b><br>Dish Up Sit<br>Pasta Via Calabasas<br>Sew's Candies<br>Starbucks<br>Sugarfish<br>Toscanova | <b>Shopping:</b><br>Barnes and Noble<br>Clay's<br>Elyse Walker<br>Fabrics<br>Lululemon<br>Pinebeck's Jewellers | <b>Ribbi</b><br>Rita Aid<br>See's Candies<br>Seahora<br>Williams Sonoma Home | <b>Miscellaneous:</b><br>Chick<br>Drybar<br>Faro Creams<br>Regency Theatre<br>Wink Optometry |



**Brian Forster**

President

Direct: 818.384.1030

[Brian@pacificpartnerscre.com](mailto:Brian@pacificpartnerscre.com)

CA DRE: 01093508

**Michelle Buckner**

Vice President

Direct: 818.284.4020

[michelle@pacificpartnerscre.com](mailto:michelle@pacificpartnerscre.com)

CA DRE: 01957319

**Lisa Shirliff**

Investment Sales & Leasing

Direct: 818.878.8853

[Lisa@pacificpartnerscre.com](mailto:Lisa@pacificpartnerscre.com)

CA DRE: 01891301

PACIFIC PARTNERS COMMERCIAL

23901 Calabasas Rd., Suite 2024

Calabasas, CA 91302

Office 818.862.2848

# Calabasas Square

23622 & 23632 Calabasas Road, CA 91302

Medical & Office Space



23901 Calabasas Rd., Suite 2024  
Calabasas, CA 91302  
Office 818.862.2848

## Brian Forster

President  
Direct: 818.384.1030  
[Brian@pacificpartnerscre.com](mailto:Brian@pacificpartnerscre.com)  
CA DRE: 01093508

## Michelle Buckner

Vice President  
Direct: 818.284.4020  
[michelle@pacificpartnerscre.com](mailto:michelle@pacificpartnerscre.com)  
CA DRE: 01957319

## Lisa Shirliff

Investment Sales & Leasing  
Direct: 818.878.8853  
[Lisa@pacificpartnerscre.com](mailto:Lisa@pacificpartnerscre.com)  
CA DRE: 01891301

The information herein has been furnished from sources which we deem reliable, but has not been verified by Pacific Partners Commercial, Inc. or its agents and for which we assume no liability. This marketing material is to be used for conceptual purposes only. All measurements and numerical data are approximate and to be verified by the prospective buyer.