

FOR LEASE

1,200± SF SECOND FLOOR OFFICE SUITE

728 - 730 High Street | Portsmouth, VA 23704



S.L. NUSBAUM
REALTY CO.



MICHAEL GOOD

Senior Associate

O. 757.640.2217

C. 757.646.0525

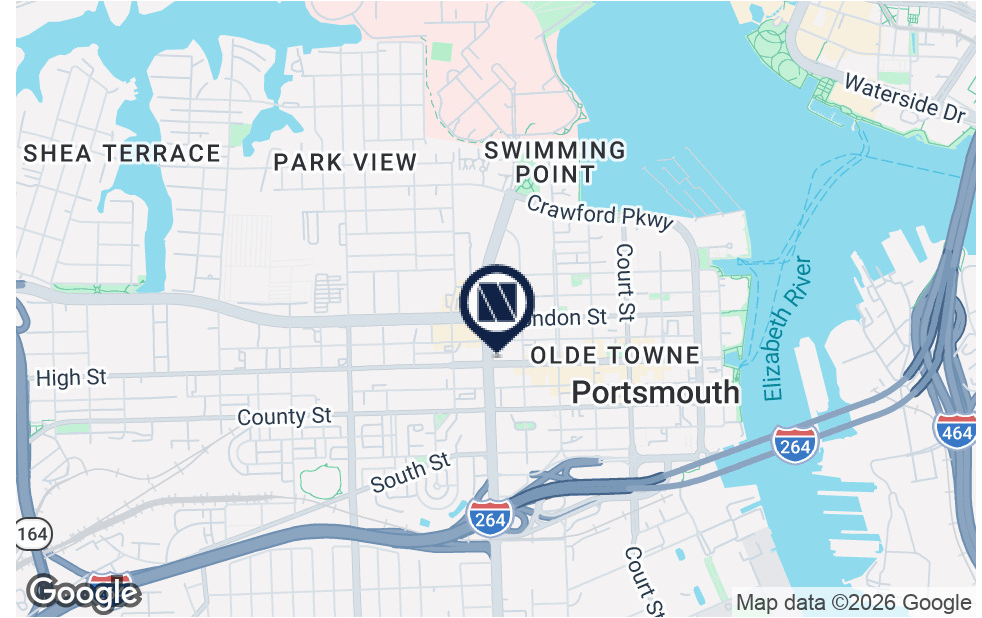
mgood@slnusbaum.com

EXECUTIVE SUMMARY

1,200± SF SECOND FLOOR OFFICE SUITE
728 - 730 High Street | Portsmouth, VA 23704



S.L. NUSBAUM
REALTY CO.



OFFERING SUMMARY

Lease Rate:	\$1,485 per month, net of electric, gas, and janitorial
Building Size:	5,796 SF
Available SF:	1,200 SF
Year Built:	1935
Zoning:	T5

PROPERTY OVERVIEW

Approximately 1,200 square feet of second floor office space located in the heart of Olde Towne Portsmouth on the northeast corner of High Street and Effingham Street. This location offers excellent signage visibility.

PROPERTY HIGHLIGHTS

- Average household income within a 10-mile radius: \$81,218
- Free on-street and off-street parking
- 22,000 VPD
- Easy access to tunnels
- Located in the center of Downtown Portsmouth in both a Business District and Enterprise Zone

SPACES	LEASE RATE	LEASE TYPE	AVAILABLE	SPACE SIZE
Suite 730-B	\$1,485 per month	Net of electric, gas, and janitorial	Available Now	1,200 SF

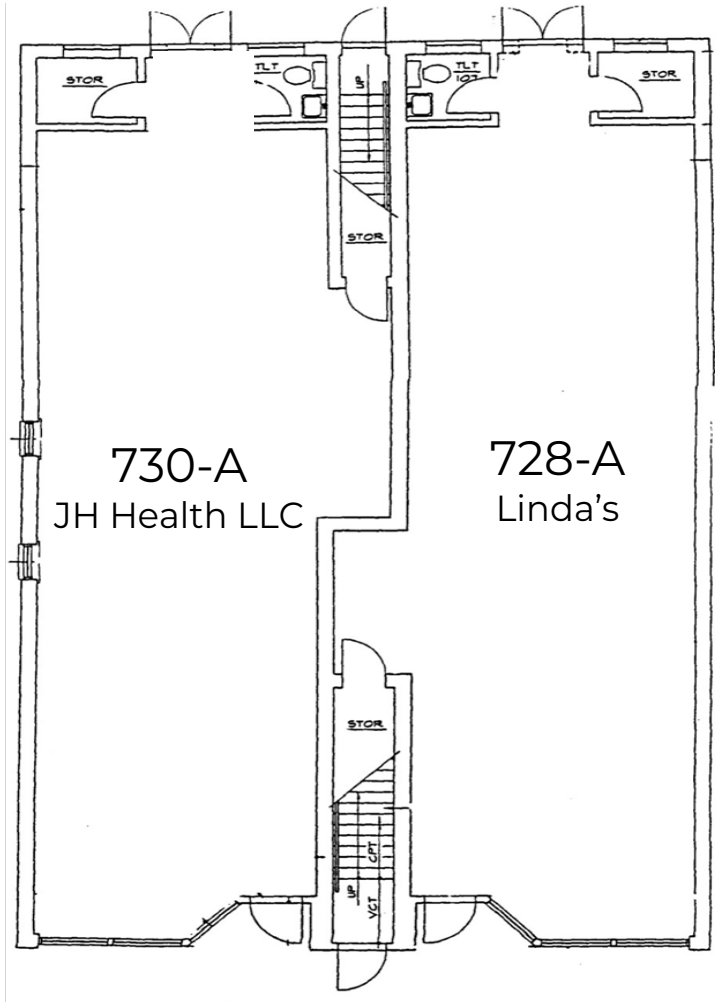
FLOOR PLAN

1,200± SF SECOND FLOOR OFFICE SUITE
728 - 730 High Street | Portsmouth, VA 23704

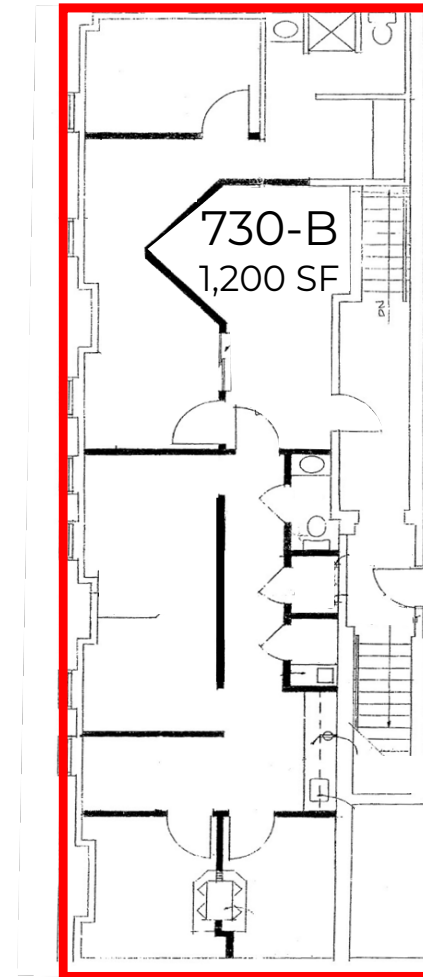


S.L. NUSBAUM
REALTY CO.

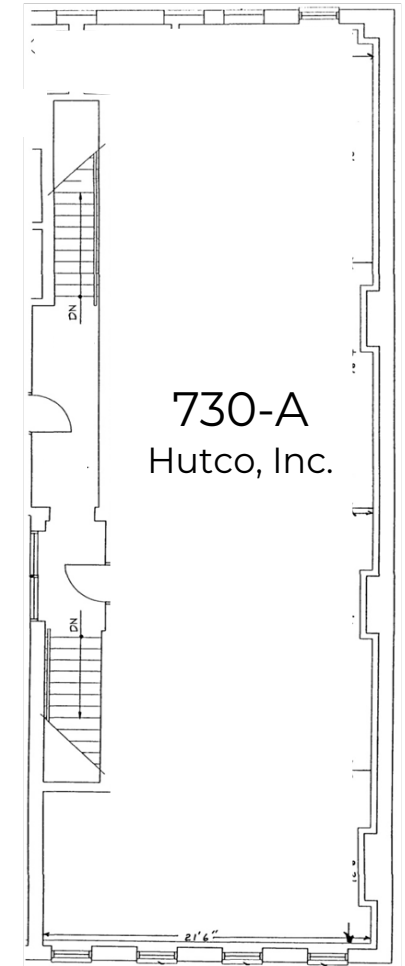
Available



First Floor



Second Floor

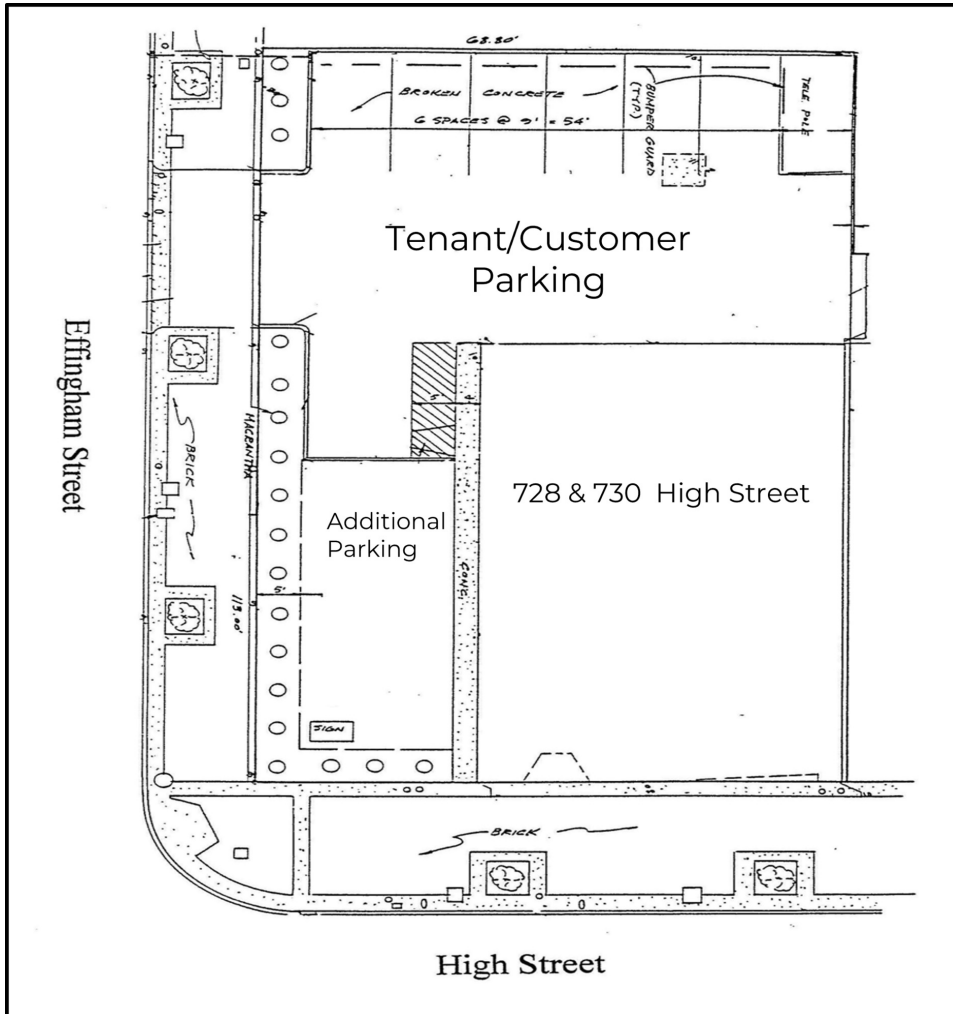


SITE PLAN

1,200± SF SECOND FLOOR OFFICE SUITE
728 - 730 High Street | Portsmouth, VA 23704

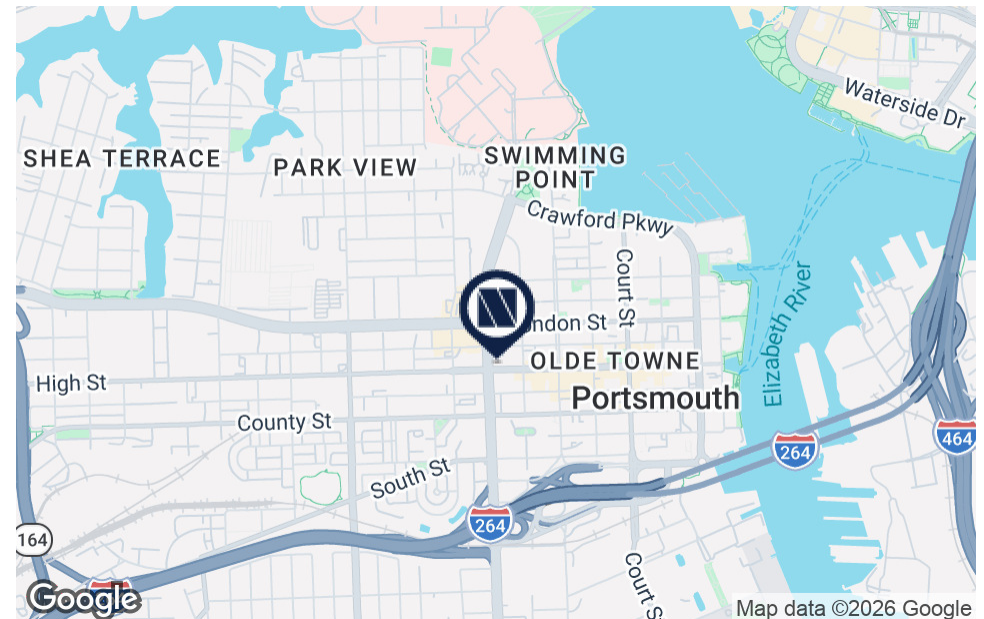


S.L. NUSBAUM
REALTY CO.



BULLETS HEADLINE

- Located in the heart of Olde Towne Portsmouth on the northeast corner of High Street and Effingham Street
- Less than one mile from the Naval Regional Medical Center
- Offers easy access to both the downtown and midtown tunnels and I-264
- Only blocks from the Portsmouth Harbor and ferry to Norfolk
- 22,000 VPD
- Only 1.3 miles to Norfolk Naval Shipyard
- Walking distance to many restaurants and only a few blocks away from the Children's Museum Plaza and Courthouse Square



SUITE 730-B PHOTOS

1,200± SF SECOND FLOOR OFFICE SUITE
728 - 730 High Street | Portsmouth, VA 23704



S.L. NUSBAUM
REALTY CO.



CONTACT INFORMATION

1,200± SF SECOND FLOOR OFFICE SUITE

728 - 730 High Street | Portsmouth, VA 23704



S.L. NUSBAUM

REALTY CO.



MICHAEL GOOD

Senior Associate

C. 757.646.0525

O. 757.640.2217

mgood@slnusbaum.com

COMMITMENT. INTEGRITY. EXCELLENCE. SINCE 1906.

Serving the Southeast and Mid-Atlantic region for well over a century, S.L. Nusbaum Realty Co. continues to provide a comprehensive experience for our clients and customers in all aspects of the multifamily and commercial real estate industry.

[CLICK HERE TO LEARN MORE](#)

DISCLAIMER:

No warranty or representation, expressed or implied, is made to the accuracy or completeness of the information contained herein, and same is submitted subject to errors, omissions, change of price, rental or other conditions, withdrawal without notice, and to any special listing conditions imposed by the property owner(s). As applicable, we make no representation as to the condition of the property (or properties) in question or the property's (or properties') compliance with applicable laws, regulations, and codes.