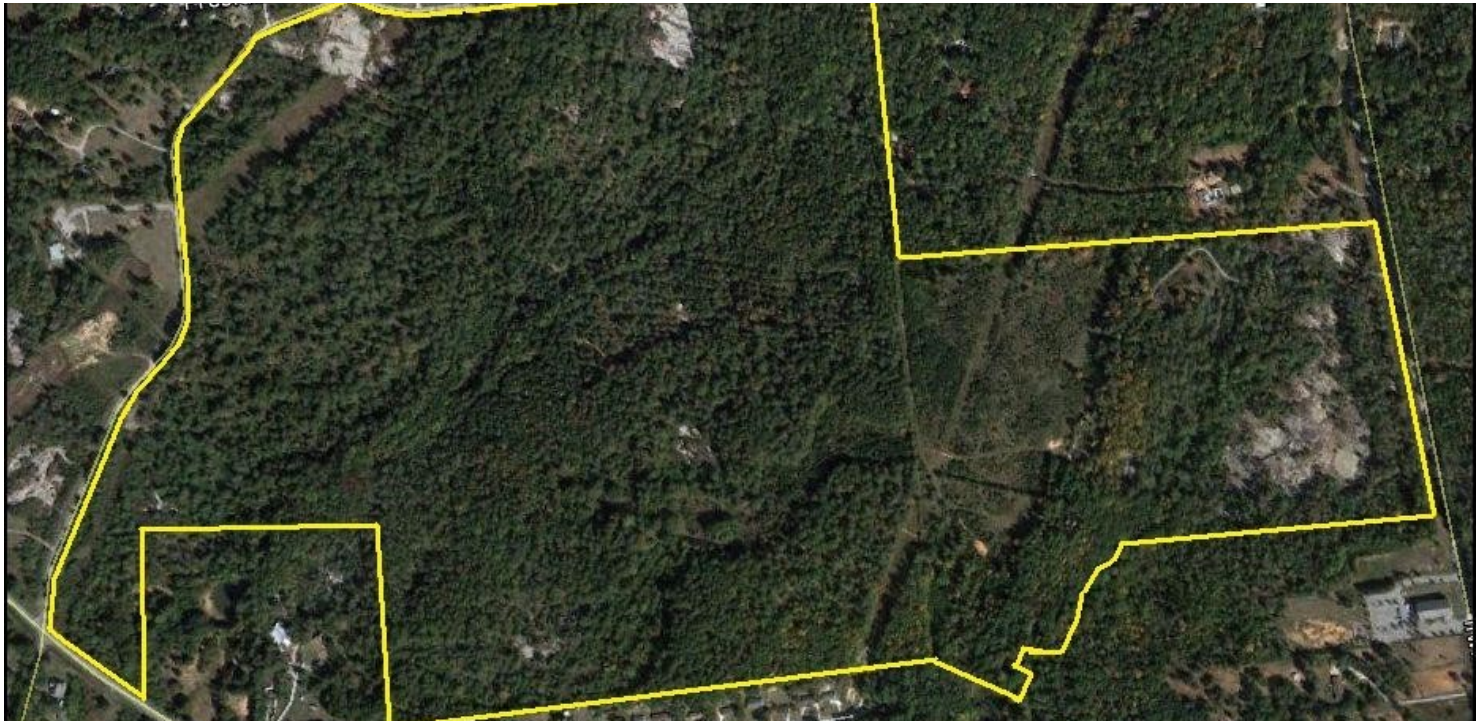


Rock Creek Subdivision

263 Acres For Planned 375 Lot Subdivision

2000 Irwin Bridge Rd, Conyers, GA 30012



OFFERING SUMMARY

Sale Price: \$4,500,000

Lot Size: 263 Acres

Zoning: CRS, Collaborative
Residential Subdivision

Market: Atlanta

Submarket: Rockdale County

Price Lot \$11,333

PROPERTY OVERVIEW

This 263 acre tract has been planned for 375 lots. Preliminary plat approval was granted by Rockdale County. An unbuildable portion of the property will need to be donated for a nature conservation area.

PROPERTY HIGHLIGHTS

- 263 Acres Rockdale County
- Preliminary Plat Approval for 375 Lots
- Drawings Available
- Located North of Conyers
- Near Olympic Equestrian Center
- Frontage on Irwin Bridge Rd
- Frontage on Farmer Rd
- Utilities Available
- Planned Conservation Area Amenity

Tom Hunter
Senior Advisor
770.289.2792
tom.hunter@svn.com



The information presented here is deemed to be accurate, but it has not been independently verified. We make no guarantee, warranty or representation. It is your responsibility to independently confirm accuracy and completeness. All SVN® offices are independently owned and operated.