



For more information:
Offered Exclusively by:
Beer Wells Real Estate Services-
East Texas, Inc.
P. O. Box 3449
Longview, Texas 75606
www.beerwellseasttexas.com

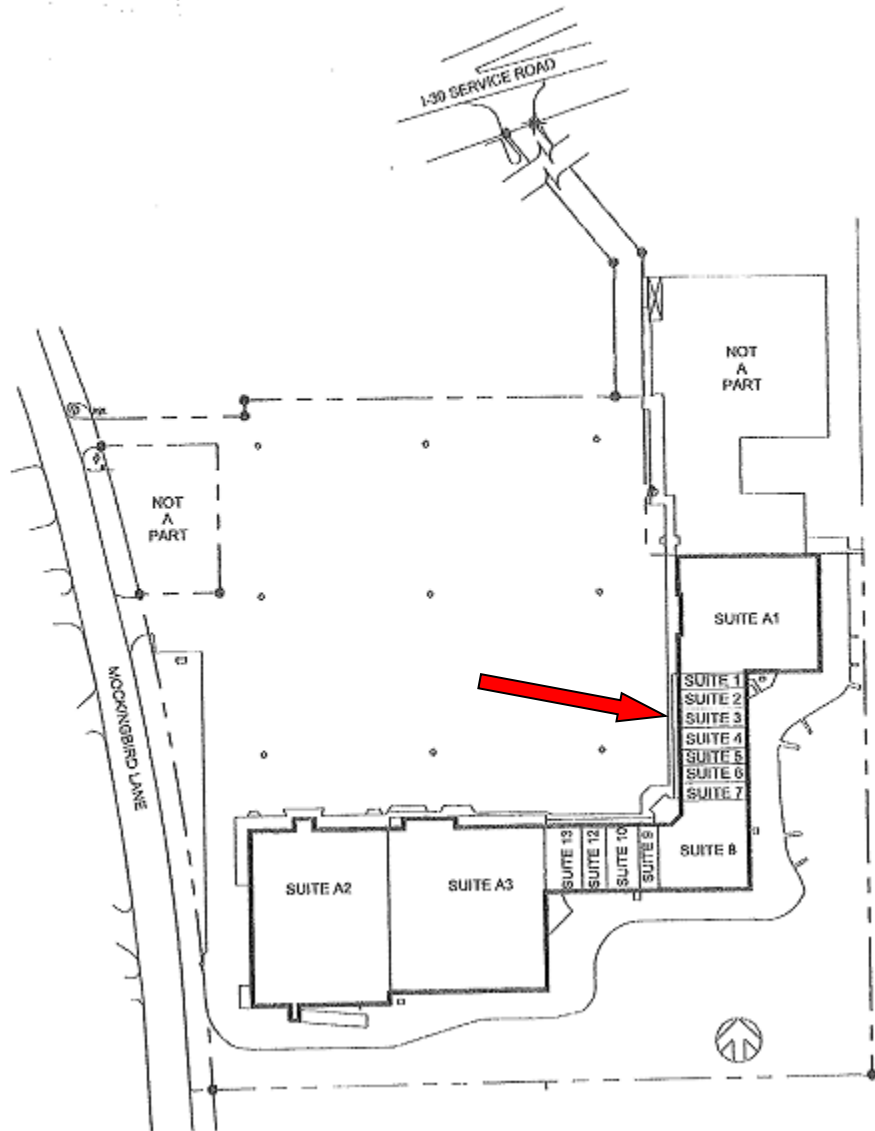
Walter R. Northcutt, Broker
903-753-2191
wnorthcutt@beerwellseasttexas.com



PROPERTY INFORMATION

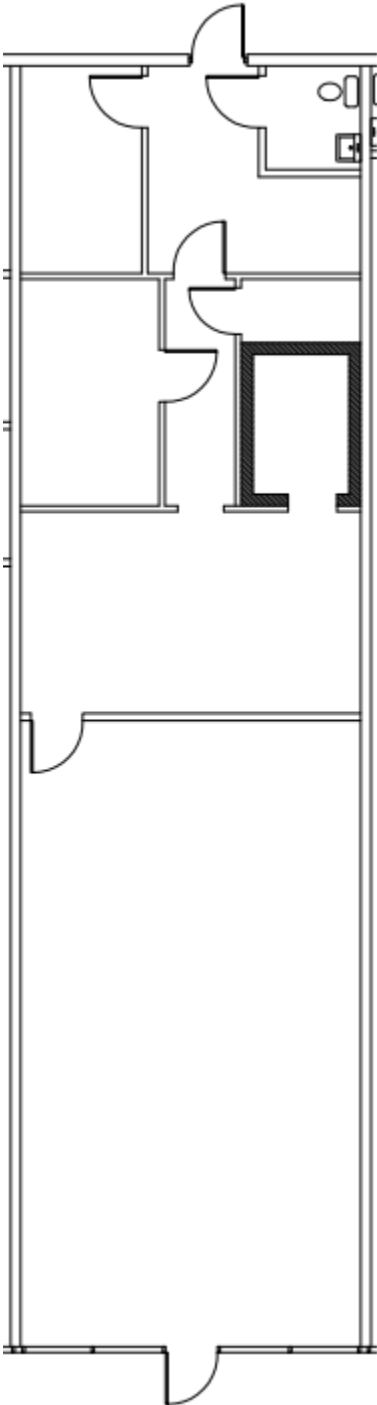
Location:	1402 Mockingbird Lane, Sulphur Springs, Texas
Square Footage Available:	Suite 3 – Approximately 1,650 SF
General Access:	Interstate 30 Mockingbird Lane
Anchors:	Harbor Freight Hibbett Aaron's Rents
Amenities:	High Visibility, Easy Ingress and Egress, Excellent Signage.
Zoning:	Commercial

SITE PLAN



FLOOR PLAN

(Actual layout may vary)



This information has been secured from sources we believe to be reliable, but we make no representations or warranties, expressed or implied, as to the accuracy of the information. References to square footage or age are approximate. Buyer must verify the information and bears all risk for any inaccuracies.

MAP



TRAFFIC COUNTS



This information has been secured from sources we believe to be reliable, but we make no representations or warranties, expressed or implied, as to the accuracy of the information. References to square footage or age are approximate. Buyer must verify the information and bears all risk for any inaccuracies.