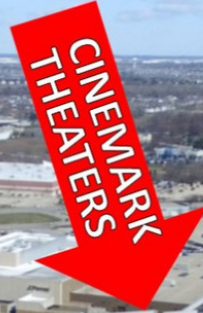


Land For Sale



~~Lot 11~~
SOLD

Lot 10

Lot 9

Lot 14

COMMERCIAL SITES NEXT TO LOUIS-JOLIET MALL

MALL LOOP DR., JOLIET, IL 60431

COMMERCIAL SITES NEXT TO LOUIS-JOLIET MALL



OFFERING SUMMARY

Sale Price: \$7.00 - \$9.00 / SF

Lot Size: up to 4.54 Acres

Zoning: COMMERCIAL

County: Will

PROPERTY OVERVIEW

Three (3) commercial lots on Mall Loop Drive next to popular Westfield's Louis-Joliet Mall.
Perfect location for restaurant and retail.

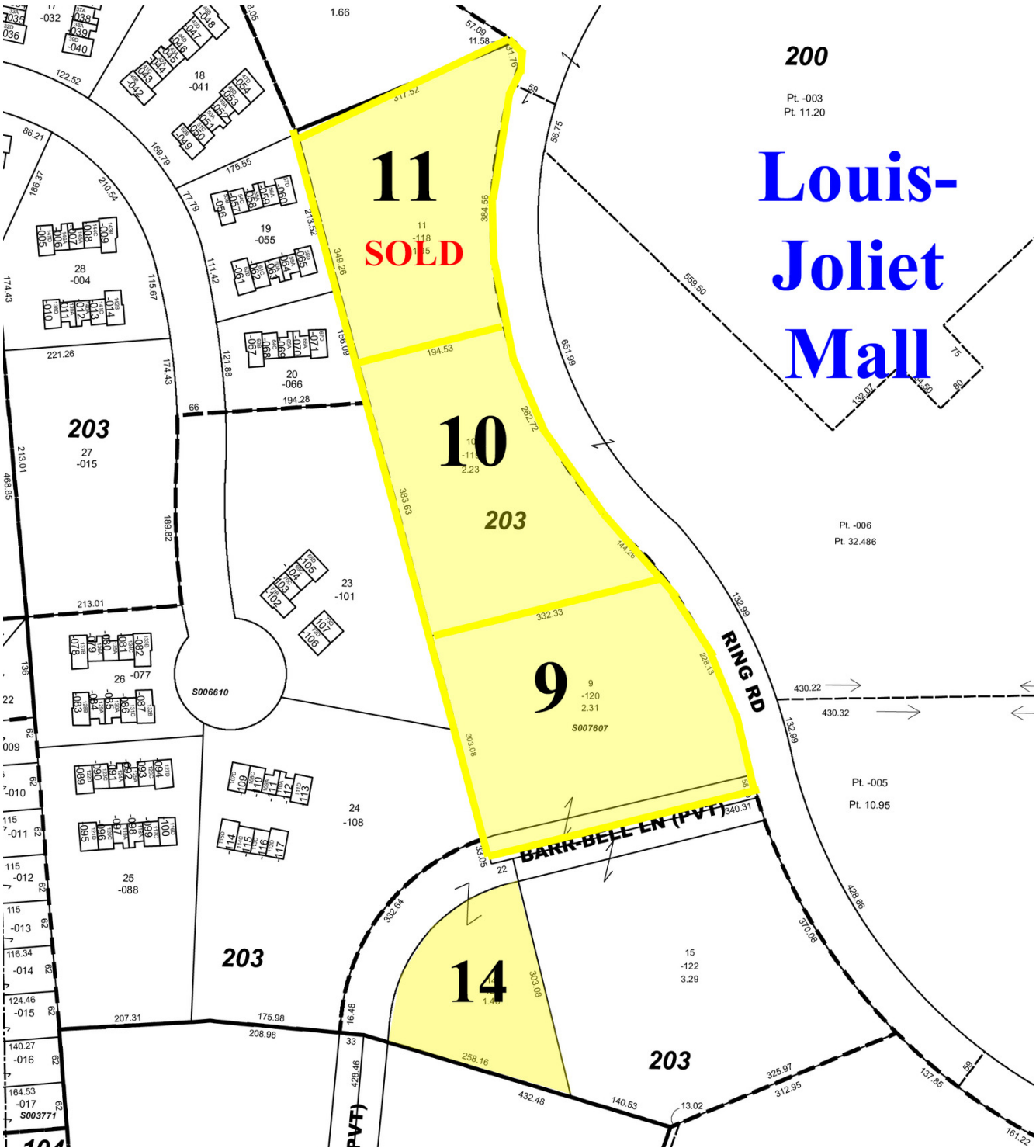
LOCATION OVERVIEW

Next to popular Westfield Louis-Joliet Mall
Adjacent to newly opened Hilton Home2
Across from Cinemark Theater
Conveniently located off I-55 and Route 30

AVAILABLE LOTS

LOT #	SIZE (AC)	PRICE/ACRE	SALE PRICE	STATUS
9	2.31	\$392,040	\$9.00 / SF	Available
10	2.23	\$392,040	\$9.00 / SF	Available
11	1.95	SOLD	SOLD	SOLD
14	1.46	\$304,920	\$7.00 / SF	Available

COMMERCIAL SITES NEXT TO LOUIS-JOLIET MALL



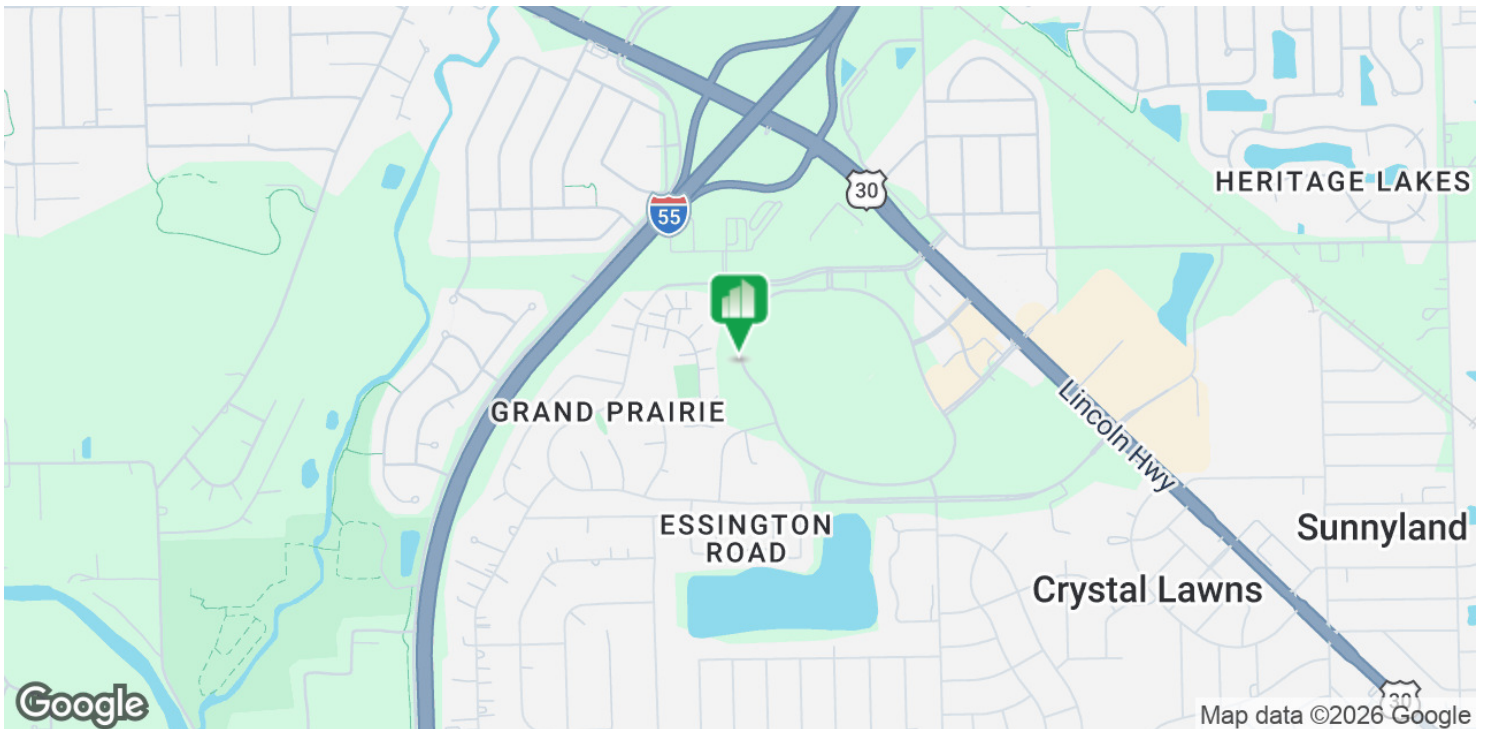
200
Pt. -003
Pt. 11.20

Louis-Joliet Mall

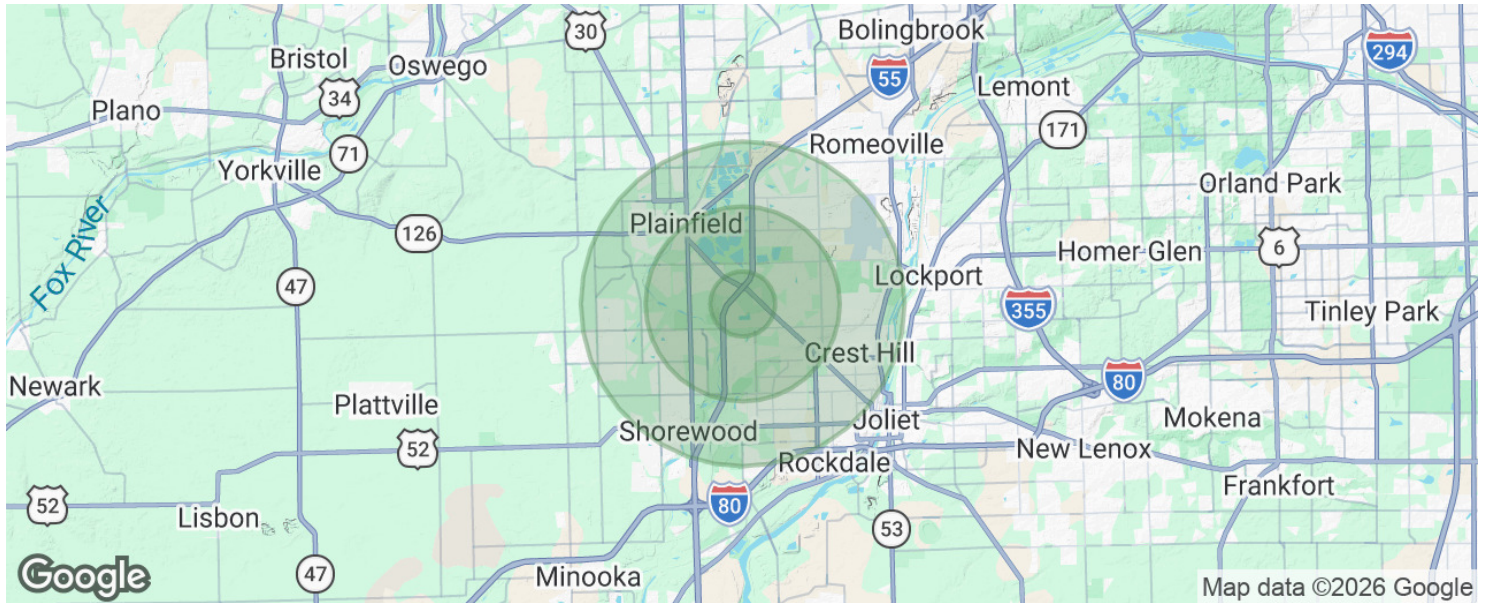
Pt. -006
Pt. 32.486

Pt. -005
Pt. 10.95

COMMERCIAL SITES NEXT TO LOUIS-JOLIET MALL



COMMERCIAL SITES NEXT TO LOUIS-JOLIET MALL



POPULATION

	1 MILE	3 MILES	5 MILES
Total population	8,342	65,337	176,140
Median age	32.9	35.4	35.4
Median age (Male)	33.0	34.3	34.1
Median age (Female)	32.1	35.7	36.6

HOUSEHOLDS & INCOME

	1 MILE	3 MILES	5 MILES
Total households	2,648	21,405	60,153
# of persons per HH	3.2	3.1	2.9
Average HH income	\$80,169	\$82,044	\$78,045
Average house value	\$203,724	\$219,856	\$225,938

* Demographic data derived from 2020 ACS - US Census