

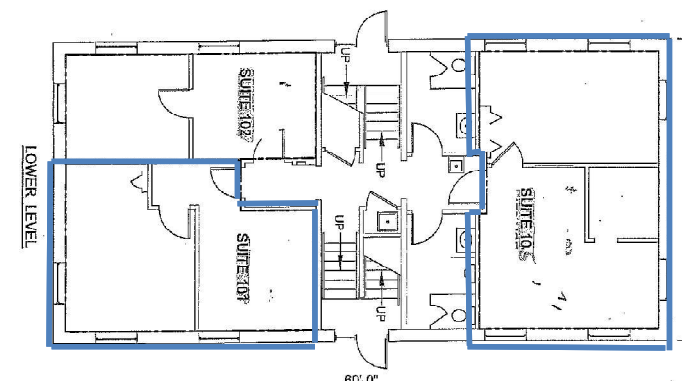
# Office/Professional SPACE FOR LEASE

10281 W 87<sup>TH</sup> ST.  
OVERLAND PARK, KANSAS



## Property Highlights

- 510 & 550+/- RSF Office/Professional Uses
- Excellent I-35 & Overland Parkway Access
- Move-in Ready, Internet Availability
- Modern Finishes, Windows and Accents
- Monument Signage Available



**Joel Hutchings**  
joel@fishmancommercial.com  
913.488.7201

**Kayla Hutchings**  
kayla@cadancekc.com  
913.747.3325

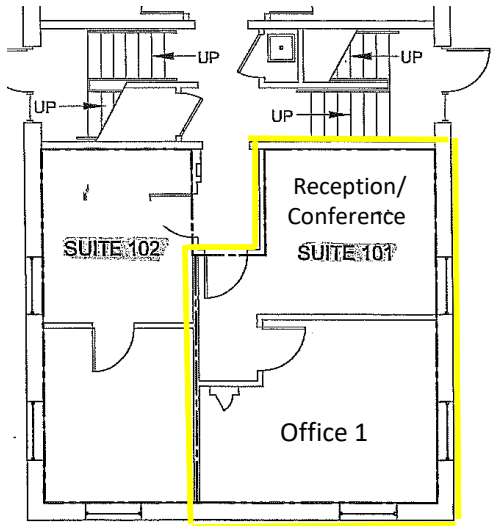


# FLOORPLAN

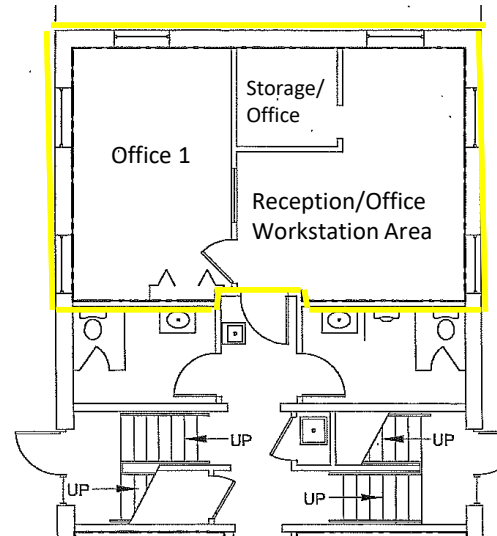
510 SF and 550 SF AVAILABLE

10281 W 87<sup>TH</sup> ST.  
OVERLAND PARK, KANSAS

**Suite 101** 510 +/-sf  
Reception/Conference, 1 office.



**Suite 105** 550+/- sf  
Reception, 1 + offices,  
Workstation Area.



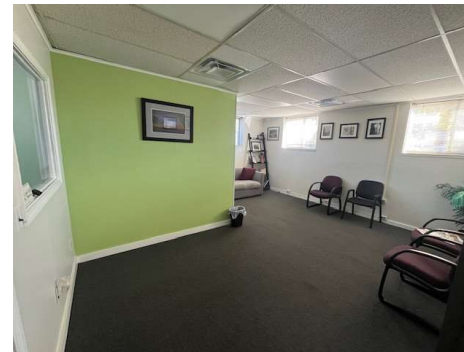
Office 1



Office 1



Reception/Conference



Reception/Conference



Reception/Workstation/Storage

**Joel Hutchings**

joel@fishmancommercial.com

913.488.7201

**Kayla Hutchings**

kayla@cadencekc.com

913.747.3325

